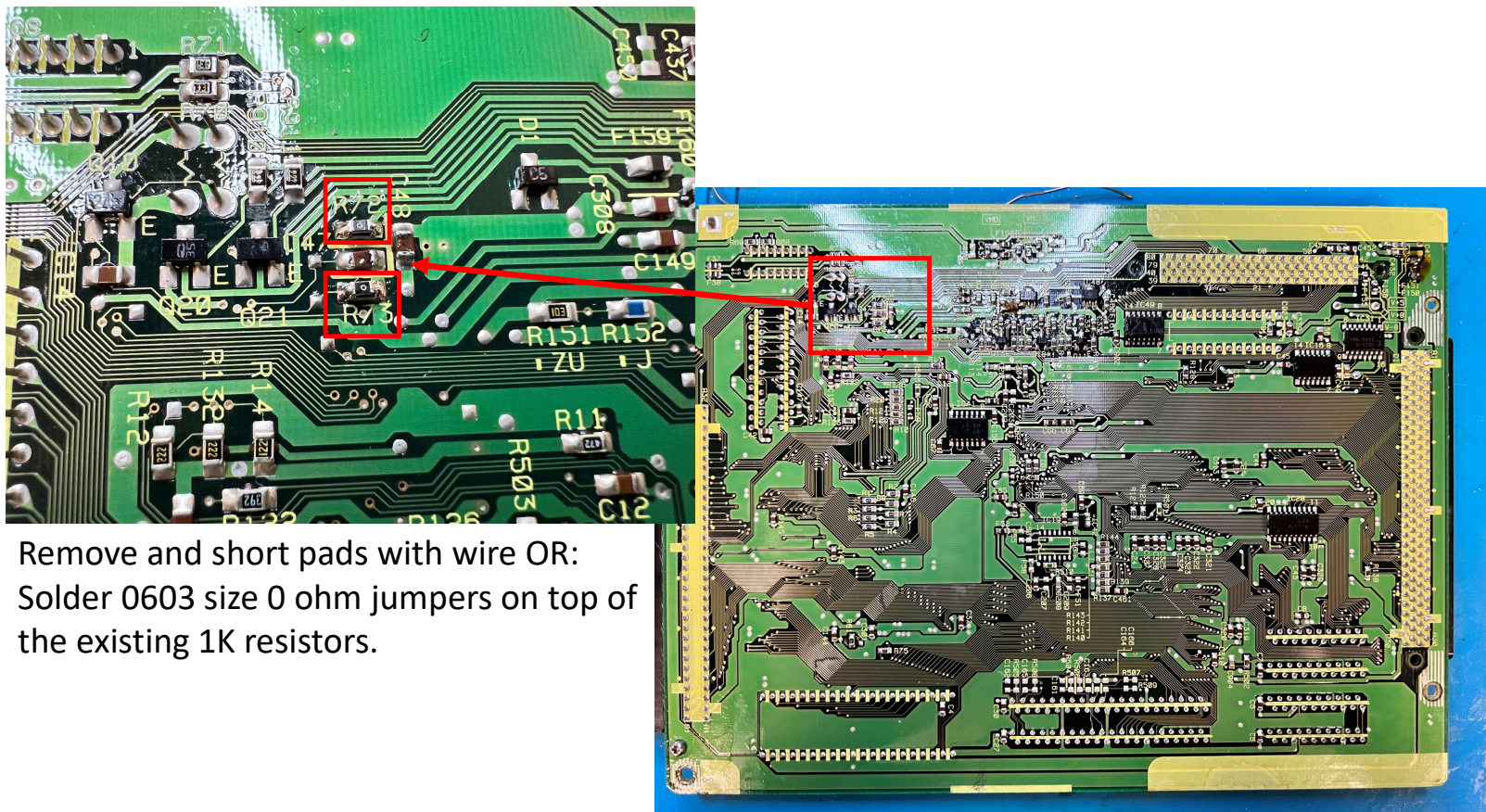


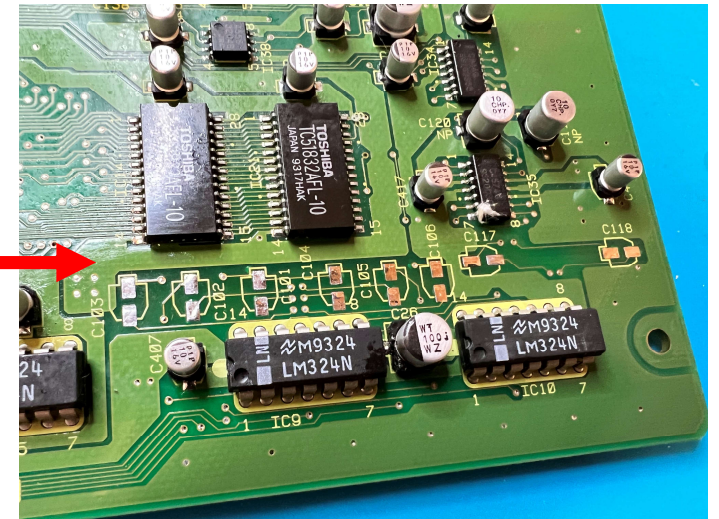
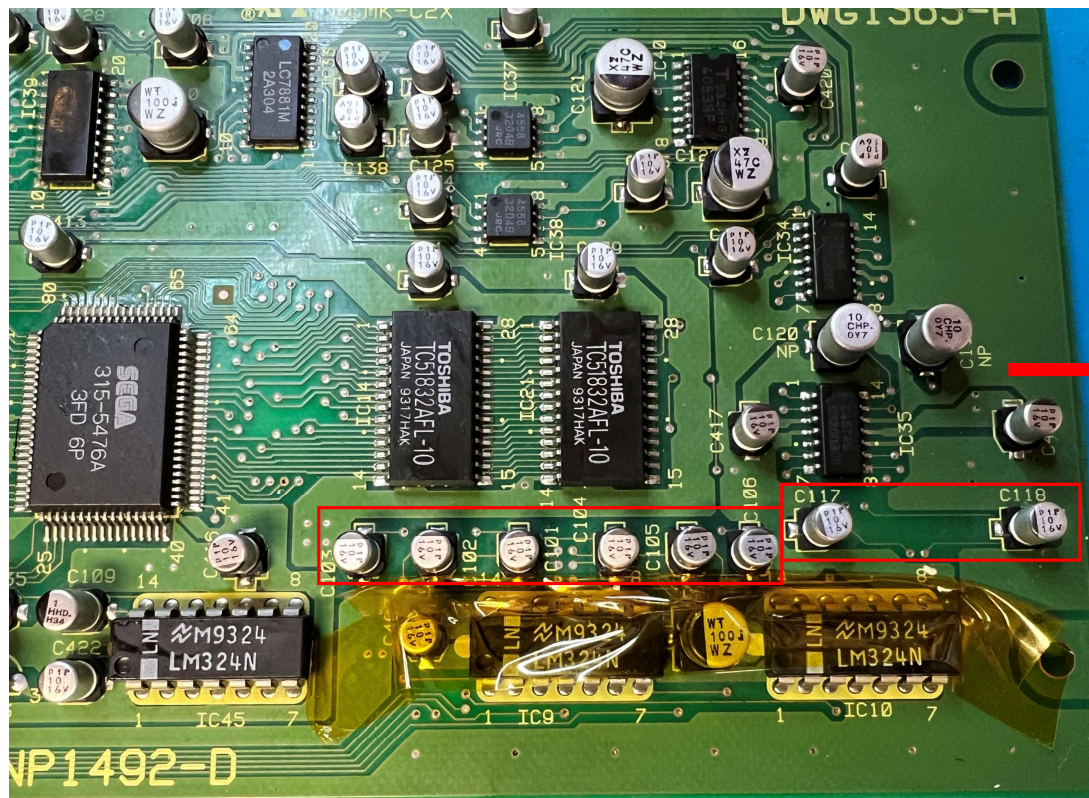
PAC Attack Install Guide

Short resistors R72 & R73 (MAIN, Bottom):



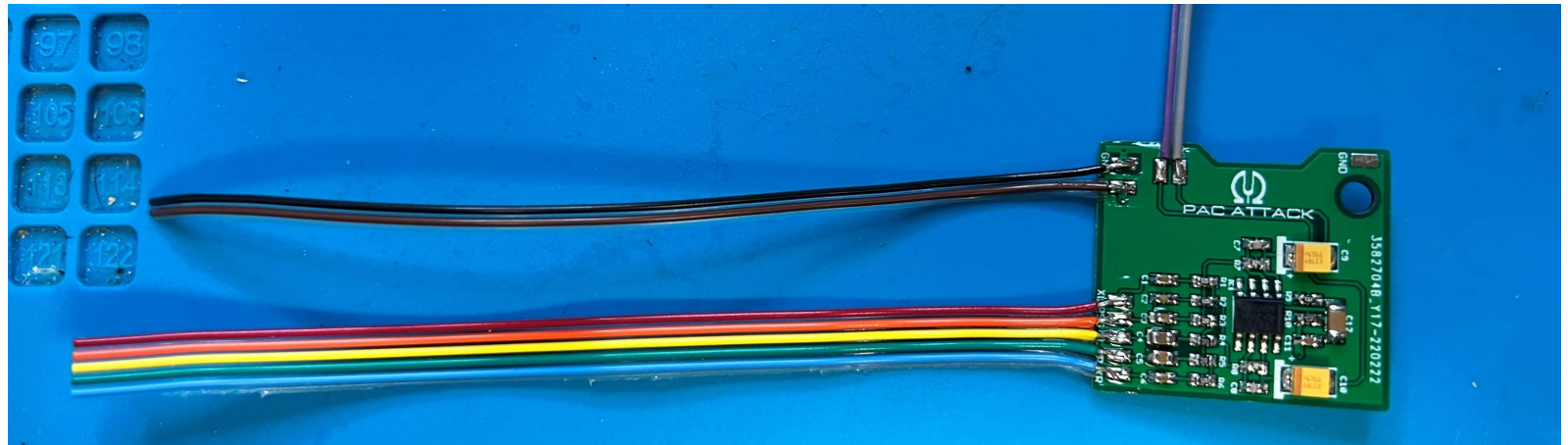
Remove and short pads with wire OR:
Solder 0603 size 0 ohm jumpers on top of
the existing 1K resistors.

Remove C101-106, C117, C118 (SUB, Top)

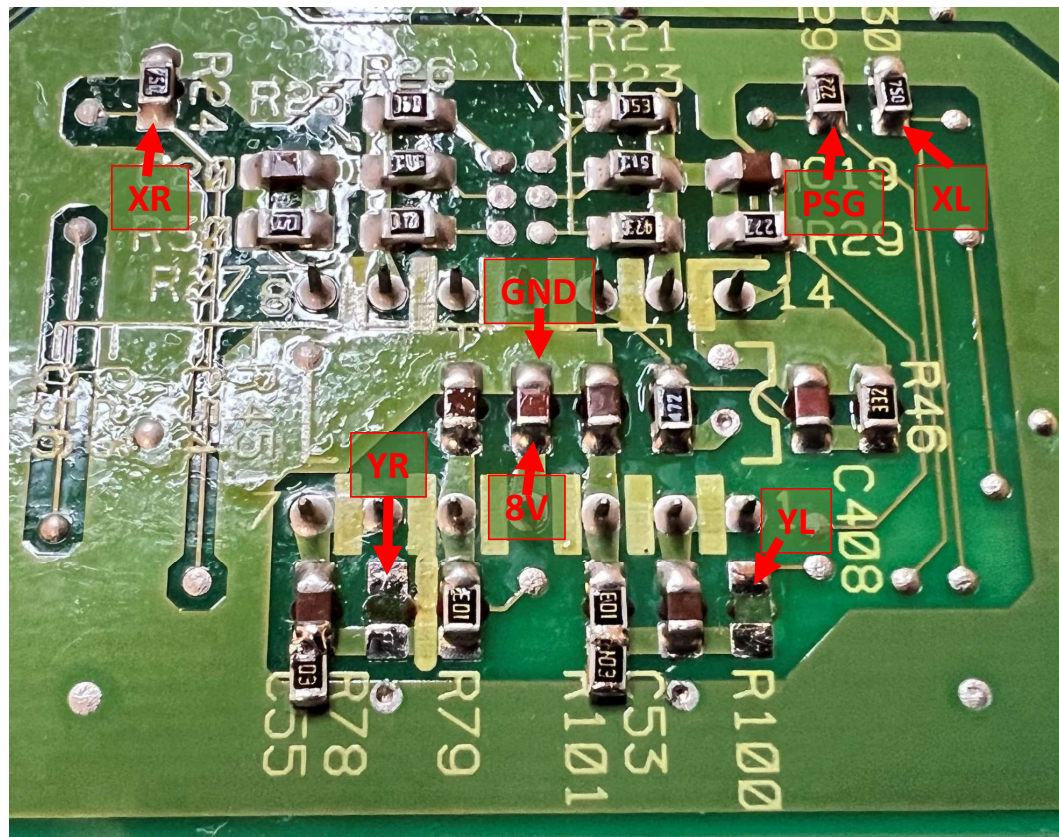


Solder wires to PAC Attack

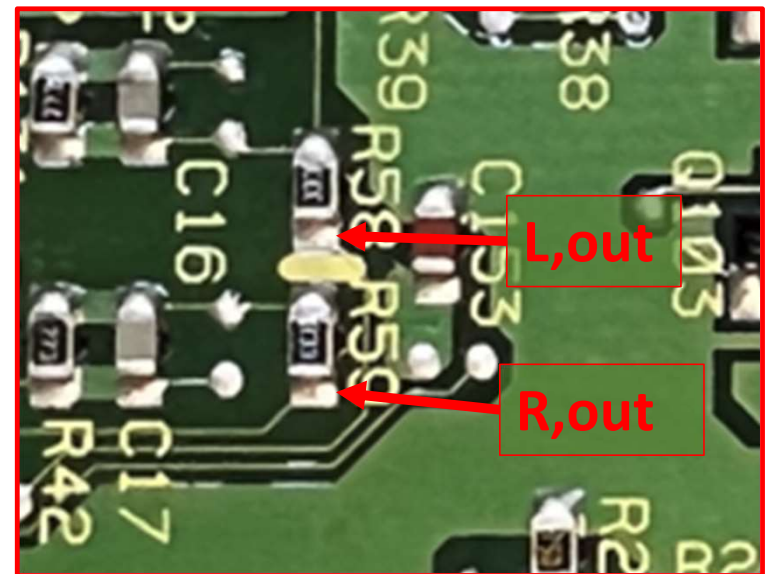
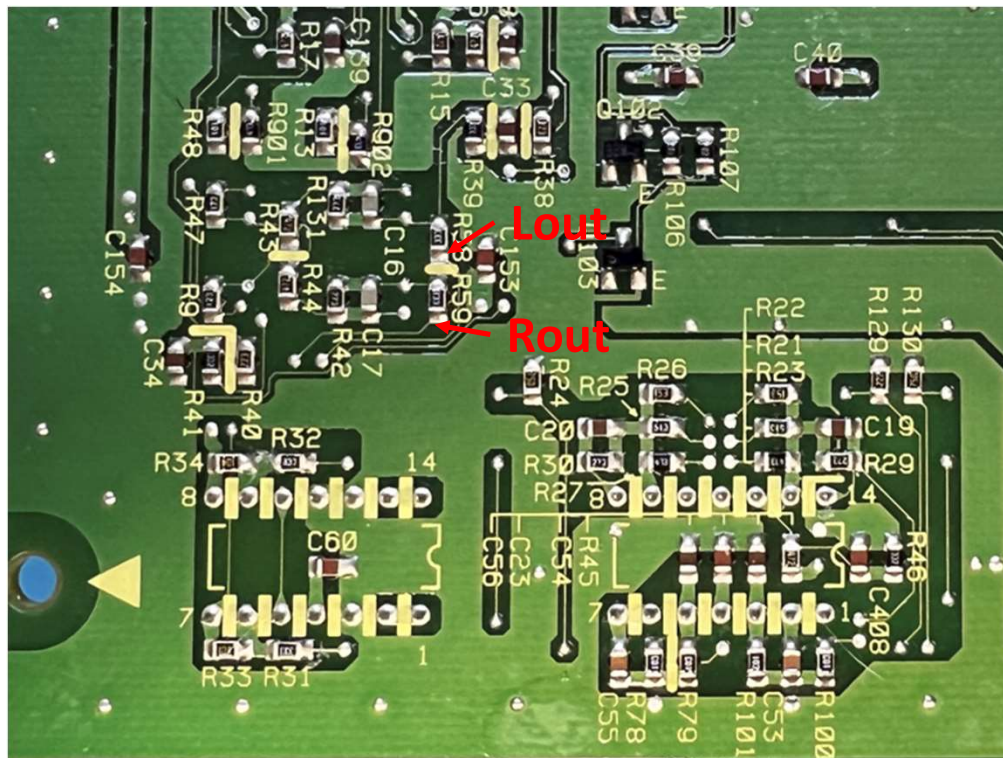
- Cut, strip and tin approximately 6-7" of wire and solder to PAC Attack



Input Connection Points – Solder to indicated SMD Pad

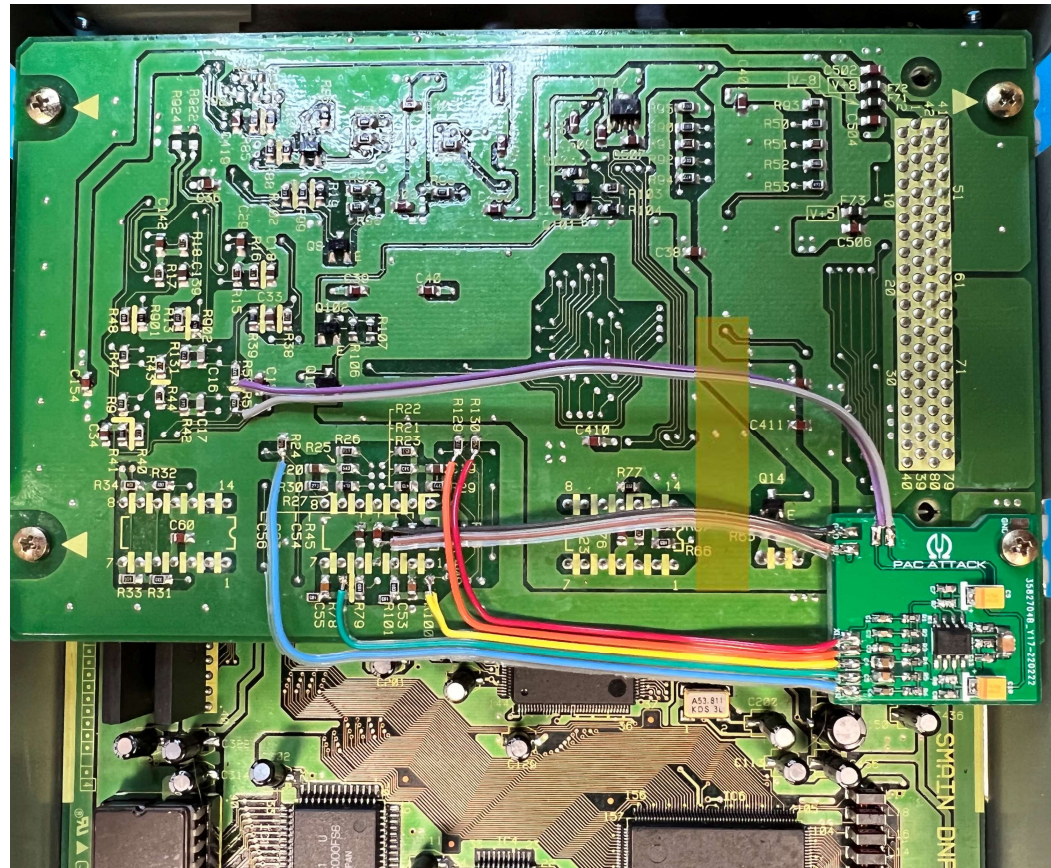


Solder Output Points to Indicated SMD Pads



Finished Installation

It is advised to use some Kapton/Polyimide tape to secure the output/power/gnd wires, as the PAC shell might snag on them while reassembling.



Connection Diagram

