



**Display**

Date: **June 18, 2001**

Subject: **BEAM SPOT**

Model: ***BVM-D24E1WE***, **BVM-D24E1WU**  
***BVM-D32E1WE***, **BVM-D32E1WU**

Serial No: **SEE TEXT**

*Italicized information in green applies to Europe, Middle East and Africa.*

**DESCRIPTION**

Units with a BK board modified for white balance drifting may have a concentrated beam spot during power off. To correct this condition, perform the following modification procedure.

**NOTE:**

- This condition will not occur in stand-by mode.
- Applicable units are those with BK board with serial numbers A-1136-025-B or A-1136-108-B installed. Refer to Technical Bulletin 302001106.
- To prevent possible white vertical line noise in blanking, modify units as described in Technical Bulletin 302001107.

**SERIAL NUMBERS**

|                    |                     |
|--------------------|---------------------|
| <i>BVM-D24E1WE</i> | 2,000,001–2,000,180 |
| BVM-D24E1WU        | 2,000,001–2,000,304 |
| <i>BVM-D32E1WE</i> | 2,000,001–2,000,023 |
| BVM-D32E1WU        | 2,000,001–2,000,106 |

**PARTS REQUIRED**

| Part No.     | Description      | Qty. |
|--------------|------------------|------|
| 8-729-029-20 | Trans, DTA114ESA | 1    |

**MODIFICATION PROCEDURE**

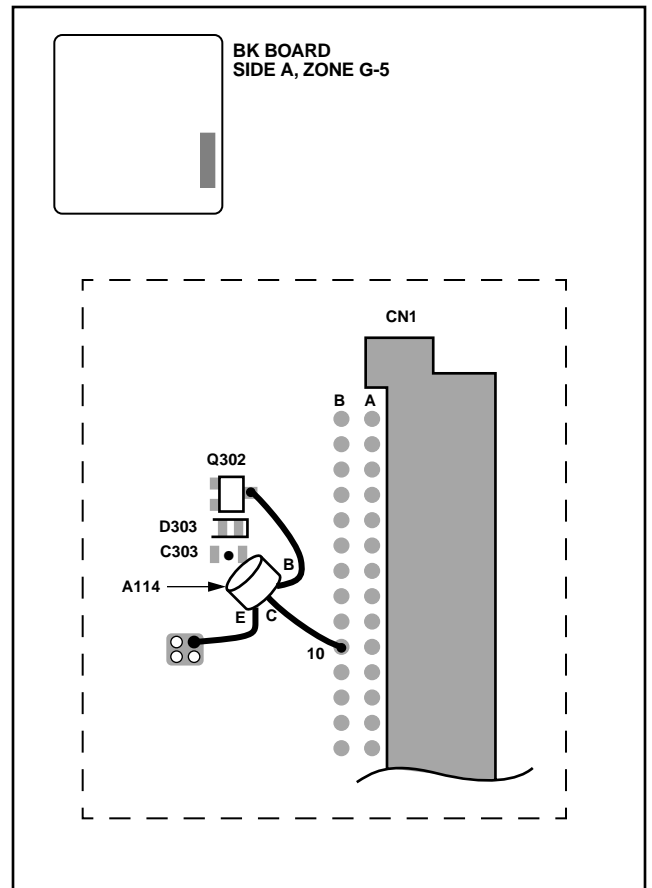
**BK Board (Side A, Zone G-5)**

(See Figures 1 and 2.)

Solder the transistor A114 as follows:

- Emitter: Digital 5V bus (near four thru-holes)
- Base: Analog 5V bus (Q302 collector)
- Collector: G2 control output (CN1 pin 10B)

**NOTE:** Make sure when soldering that the leads do not come in contact with other leads.



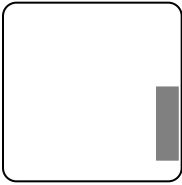
**Figure 1**

**ORDERING INFORMATION**

**NOTE:** To order upgrades or for regional service center and parts ordering information, refer to the following document, which lists all contact telephone numbers:

**Technical Bulletin 001999000**

**Canadian customers:** Please order parts from your usual supplier.



BK BOARD  
SIDE A, ZONE G-5

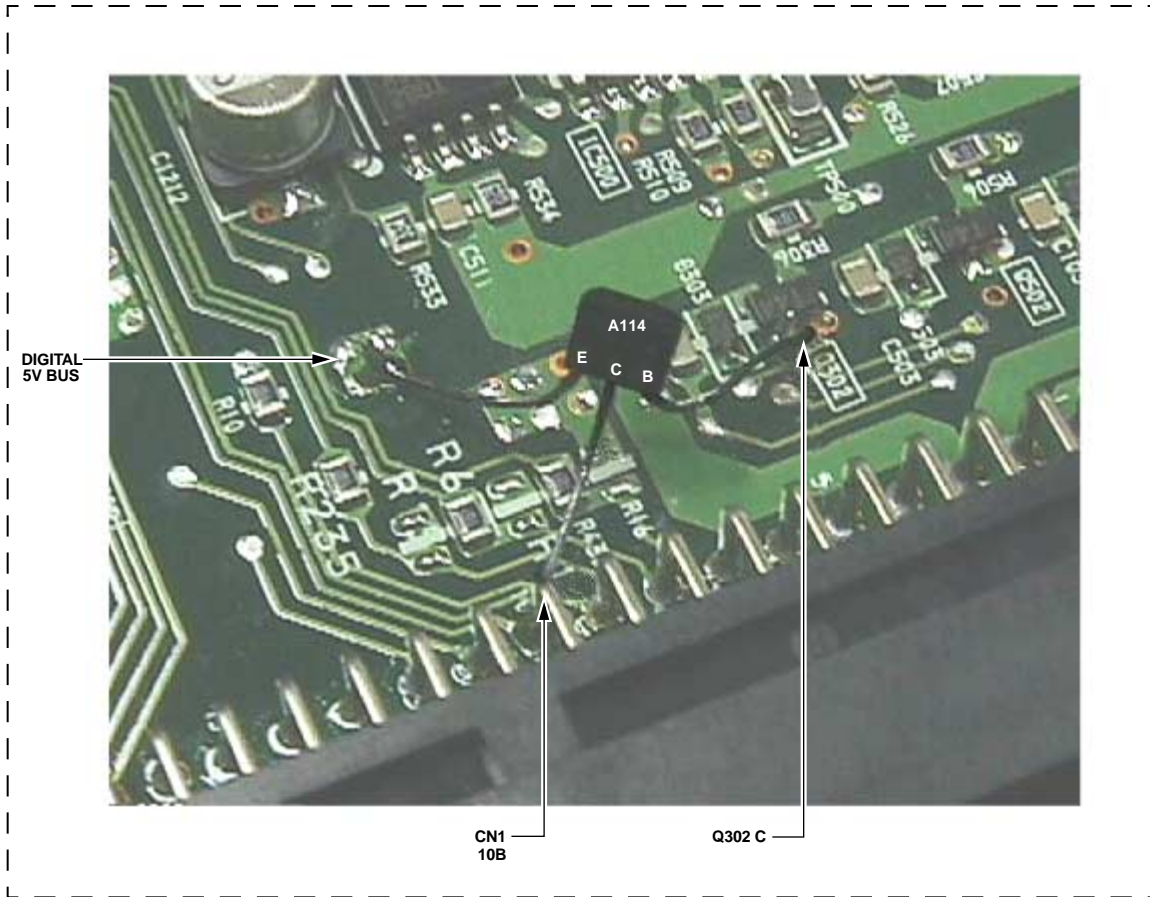


Figure 2