



Video Products Technical Bulletin 30-2007-021

DATE: February 5, 2007

SUBJECT: **WRITE SERIAL NUMBER AFTER REPLACING
B BOARD**MODEL: **LMD-9020
LMD-9030
LMD-9050**SERIAL NO: **ALL****DESCRIPTION**

After replacing the B board, the serial number of the unit must be written as follows.

WRITING PROCEDURE**System Requirements**

- PC with RS-232C port
- Cable (9P DSUB-8P DIN)

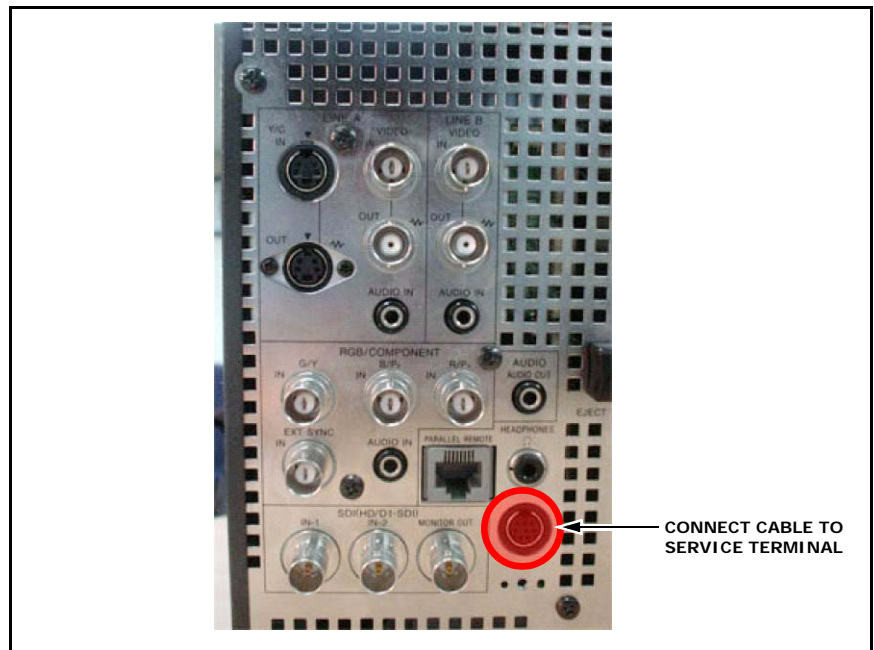
NOTE: The recommended cable for BKM-11R is 1-782-348-11. The cable with part number 1-831-247-11 cannot be used.

- Terminal software, such as Tera Term

NOTE: Microsoft HyperTerminal cannot be used.

Procedure

1. Remove the cover of the service terminal at the rear of the monitor, and connect the cable between the service terminal and the PC RS-232C port. (See Figure 1.)

**Figure 1**

DPMO05-066

2. Turn the monitor ON.
3. Start terminal software.

4. Select the appropriate port. (See Figure 2.)

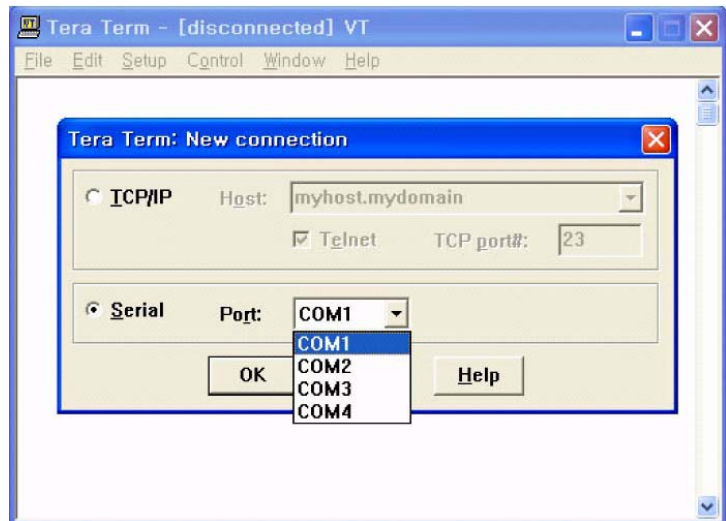


Figure 2

5. Set terminal settings as follows. (See Figure 3.)

Baud rate: 9600
Data: 8 bit
Parity: None
Stop: 1 bit
Flow control: None

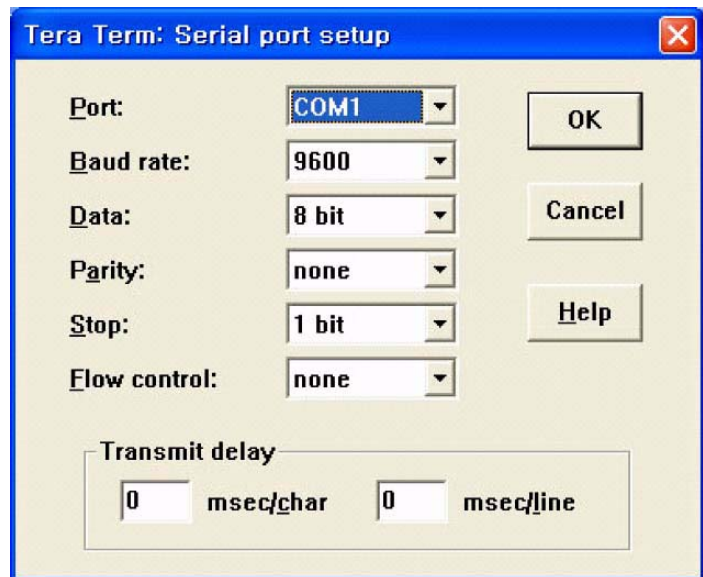


Figure 3

6. Type SERW followed by the serial number of your unit, and press ENTER.

For example: If the serial number of your unit is 1234567, type: **SERW1234567**

(See Figure 4.)

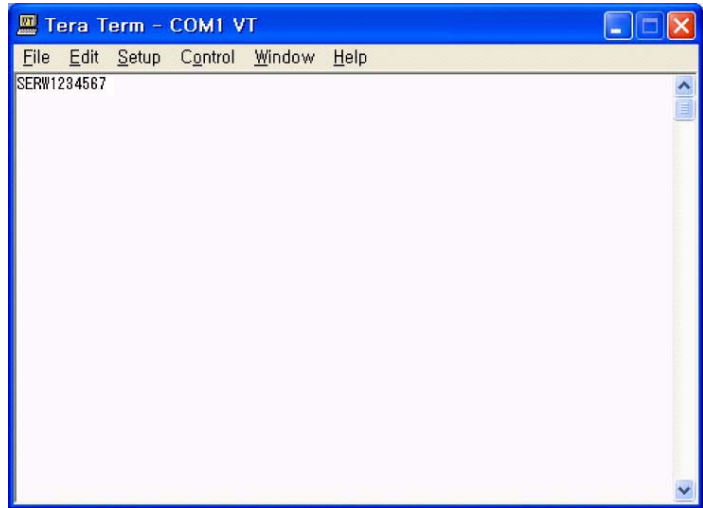


Figure 4

NOTE: The characters are not displayed as they are entered. If you want the characters to be displayed, click to select the Local echo checkbox. (See Figure 5.)

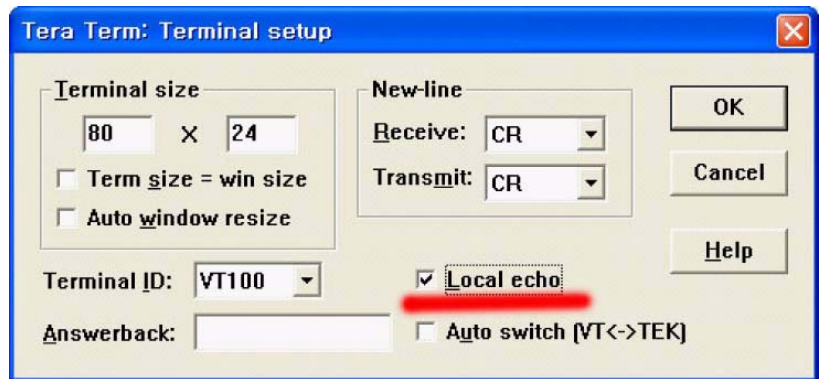


Figure 5

CONFIRMATION

1. Remove the cable, and turn monitor power OFF and ON.
2. Confirm the serial number in the STATUS (2/2) menu. (See Figure 6.)

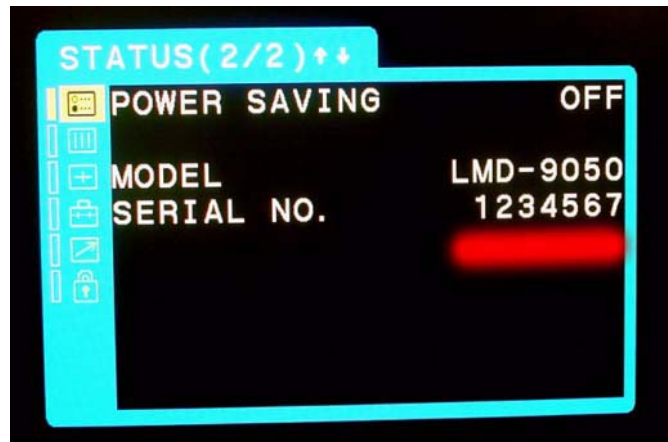


Figure 6