



Xk3y User Manual



One Set should include (Please note this can change with future shipments)

- 1x Main Board
- 1x Remote (optional)
- 1x Micro SD card
- 1x SATA Cable
- 1x Molex Power Cable
- 1x USB to Micro USB cable
- 1x FFC/USB Dongle
- 1x Short FFCable
- 1x Long FFCable
- 1x Main board protection card
- 1x Serial Number with verification string

Contents

[Part 1 - Installation](#)

- [Dumping your dvd drive key/firmware files](#)
- [Opening xbox 360](#)
- [Configuring the firmware on your microSD card](#)
 - [Slim 360 firmware configuration](#)
 - [Phat 360 firmware configuration](#)
- [Slim configuration for console that need RGH](#)
 - [Step 1 RGH](#)
 - [Step 2 Create the Keys Files](#)
 - [Step 3 Extract the FWCRT File](#)
 - [Step 4 Configure Your Drive Type](#)
- [Insulating the xk3y](#)
- [Installing xk3y in your 360](#)
 - [Step By Step with Images](#)
 - [Connecting your xk3y :](#)
- [Closing the xbox 360 console](#)

[Part 2 - Changing settings with xkey.cfg](#)

- [LANGUAGE=](#)
- [MENUISO=](#)
- [SSID=](#)
- [PSK=](#)
- [KEY=](#)
- [RESUMELAST=](#)
- [DVDMENU=](#)

[Part 3 - Xk3y Use](#)

- [Updating Xk3y](#)
- [ISO storage](#)
- [Multi disc games](#)
- [WiFi dongle](#)
- [WiFi Interface](#)
 - [Cover Slide](#)
 - [Alphabetic Selection](#)
 - [Folder Structure](#)
 - [About](#)

[Part 4 - Trouble Shooting](#)

- [Flashing Blue Light](#)

[E64 Error](#)

[AP25 ERROR](#)

[1 RROD error](#)

[Can't read your HDD](#)

[Slow Read Times from HDD \(Games crashing or Stuttering\)](#)

[Xk3y remote stuck on xk3y logo](#)

[Xbox resets every 5~15 minutes](#)

[WiFi dongle won't connect to my wireless network](#)

Part 1 - Installation

Installing the xk3y us as simple and opening your 360, fixing the xk3y device into position, applying your firmware to the supplied micro sd card, and closing your console.

Dumping your dvd drive key/firmware files

Before you start: Installing the xk3y is easy. However, you need your DVD drive information. The DVD drive in the 360 encrypts game data from the DVD drive back to the 360. The information is encrypted with a unique 'key'. To install the xk3y, you will need this key so that the xk3y can talk to your 360 in the same manor that your DVD drive does.

For those who don't know how to dump their drive key or who aren't getting someone else to do it for them, you will need either the Xk3y Gecko, [Maximus 360 Lizard](#) or X360USB Pro. The Maximus team also helped out the xk3y team with the dumping of firmware on the new DVD drive to make the xk3y compatible with more DVD drives. Some newer Xbox consoles need the Reset Glitch Hack (RGH) performed to obtain the DVD keys from the console since they cannot be extracted from the DVD drive.

If you are not familiar with these tools, you will need to read the tutorials that their developers provide. The tools are quite expensive - if you are only going to install 1 unit you might want to pay someone to extract your DVD drive information for you.

Opening xbox 360

While using opening tools are not necessary, they are cheap and can save you a lot of time and effort to open your console.

- [Fat console](#)
- [Slim console](#)

Once the console is open, you will will need to extract your DVD drive information

Configuring the firmware on your microSD card

The supplied micro SD card is roughly 128mb in size. This 128mb is split into 3 different partitions.

1. BootINIT sector

2. Ext3 sector (this contains rootfs and ulmage, the xk3y firmware files). You will not be able to see this in a non linux machine. If you want to update these files there is no need to see this partition, you can update your xk3y via a USB, and the xk3y will copy these files onto this partition for you.
3. a 0.98mb Fat32 partition. This is where you put your firmware.bin or dummy.bin to configure the xk3y.

To transfer files to your microSD card you can use either a USB microSD card reader, an SD card adapter (and then an SD card reader) or you can use a device such as a mobile phone.

Slim 360 firmware configuration

To configure your xk3y on a slim 360, all you need to do is drop your dummy.bin file on the root of your microSD card. Please ensure you safely remove your

- Maximus Lizard users: The file that is made by the lizard is called **source_dummy.bin** - All you need to do is rename this to **dummy.bin**
- USB Pro/Jungle Flasher users: The file that is created is already called **dummy.bin**. However, there are some small differences between some DVD drives that have the same firmware. For example there are up to 7 or so variations of the 0225 slim DVD drive. Unfortunately the xk3y is unable to automatically configure itself based on small bits of missing information from Jungle Flasher dumps. The missing information is not enough to cause e64 errors (no DVD or wrong DVD drive detected) but it can cause 360 games to not load...or load sometimes and not others. The fix is to alter the ALTSLIMFW parameter on a file called xkey.cfg. [This can be done after installation is complete via USB. More details are below in the xkey.cfg section](#)

Please note that the first DVD drive that was in the 360 (Hardware Liteon DG16D4S, Firmware 9504) was updated in mid 2011 with a Microsoft firmware update. The Firmware changes from 9504 to 0272. It is important that you dump the firmware after this update. If you have an old dump of your firmware (i.e. 9504) and you use this to configure your xk3y, newer XGD3 games will not work on your system.

Phat 360 firmware configuration

Configuring the xk3y on your Phat console is a little bit more technical. Instead of a partial dump of the drive needed (like slim 360s) a **full OFW (original firmware)** dump is needed. If you only have, or are only able to make a partial dump of your firmware, OR if you have CFW (custom firmware) on your drive you can just convert the dump into the format that the xk3y accepts.

The file needs to be called **firmware.bin**

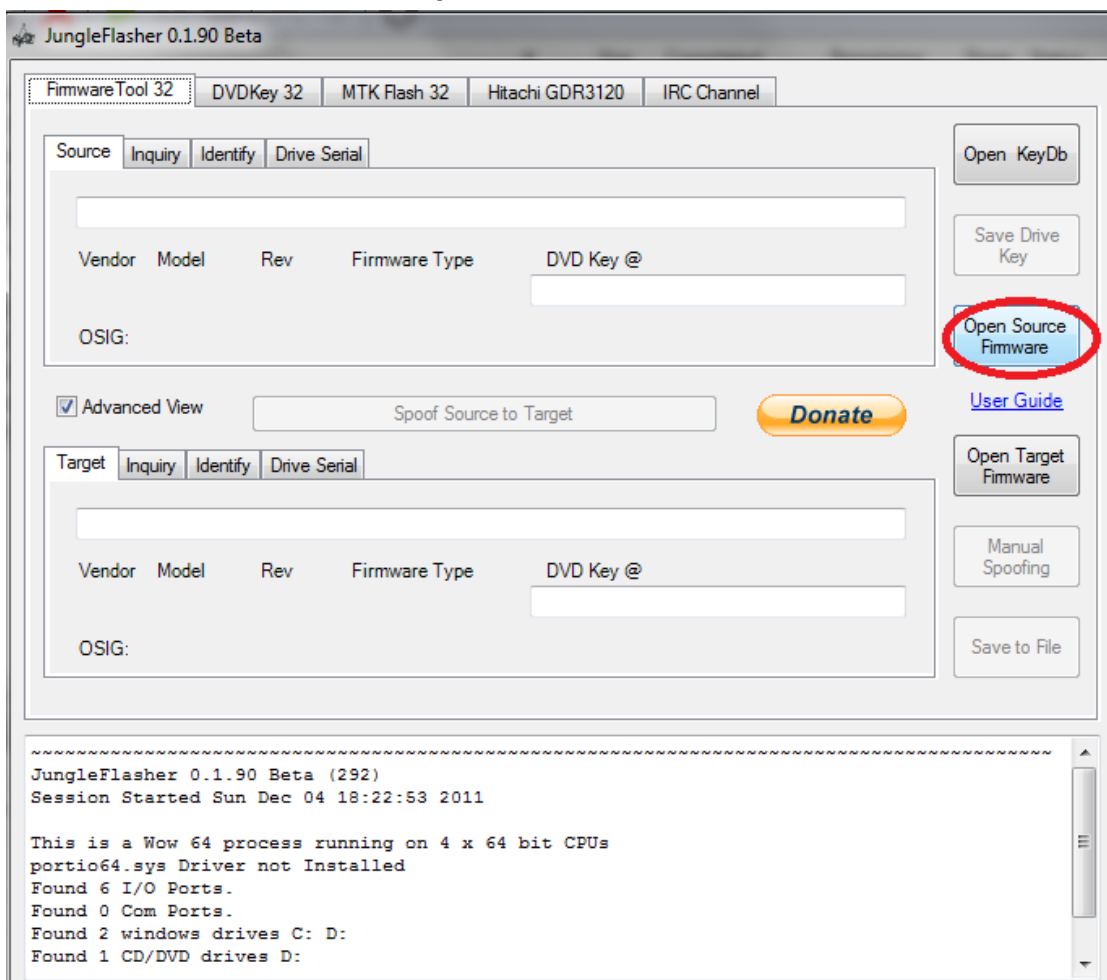
You cannot simply rename the file you have to firmware.bin, as mentioned it **MUST** be a full original firmware dump, and on top of that it must be after the Mid 2011 update from Microsoft. If not you will get an e64 error.

To convert your dump into the correct format you will need to download the file below, which is a program called Jungle Flasher. Included in the program in the firmware folder are the appropriate firmware files needed for all phat 360s.

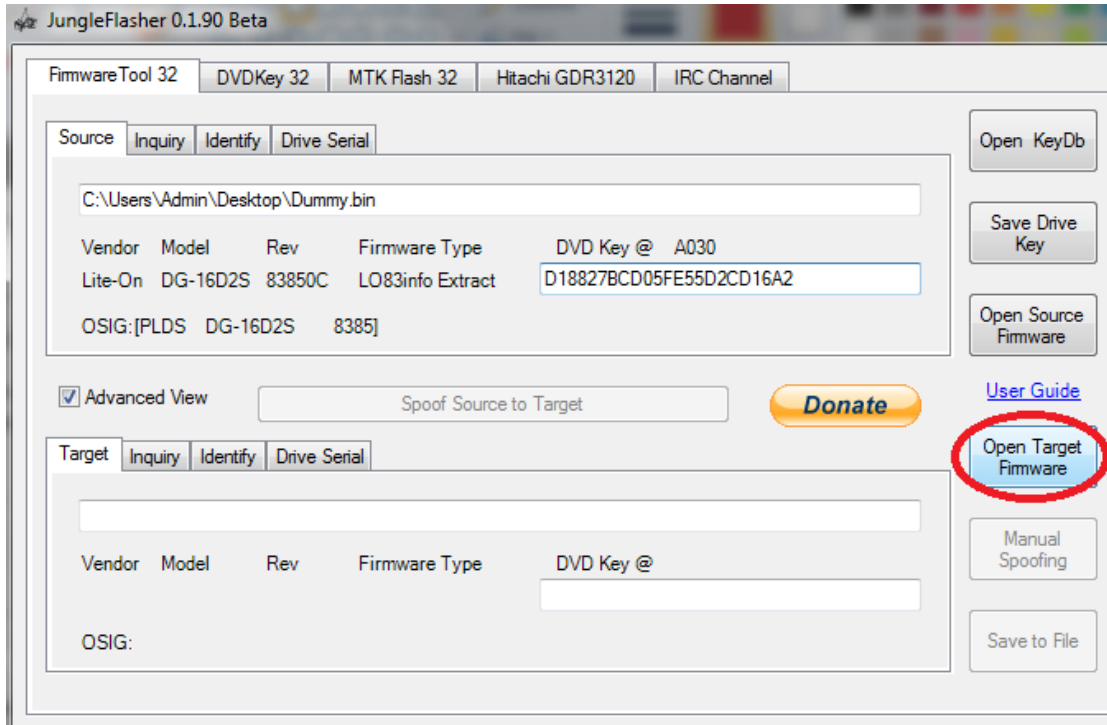
[Download file here](#) - Jungle Flasher Pack

Jungle Flasher is a powerful little program that has a 270 page manual. However for the purpose of the xk3y we only need to know how to use 1 feature.

1. Open up JungleFlasher.exe. You may receive an error when opening on a 64bit PC. Just ignore it.
2. On the FirmwareTool32 tab, click on **Open Source firmware** button



3. Navigate to your firmware file. It should be 256KB in size. For demonstration purposes we will be using a file for a liteon drive.

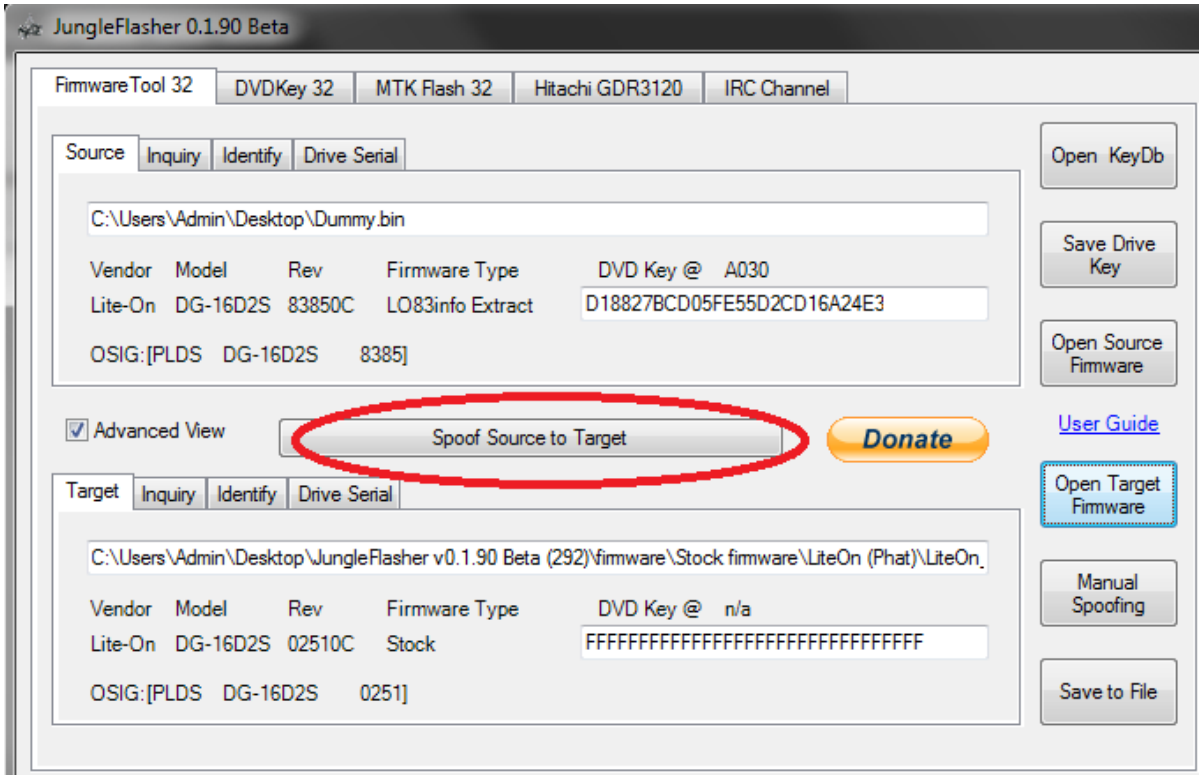


4. After it has been opened your information will appear in in the top panel. The next step is to open up a full original dump, the target firmware. This is the file you want to convert your DVD dump into. The files are located in a folder called **firmware** which is located in the Jungle Flasher folder. Inside this folder there is a folder called **Stock Firmware**. Inside this folder there are 4 folders

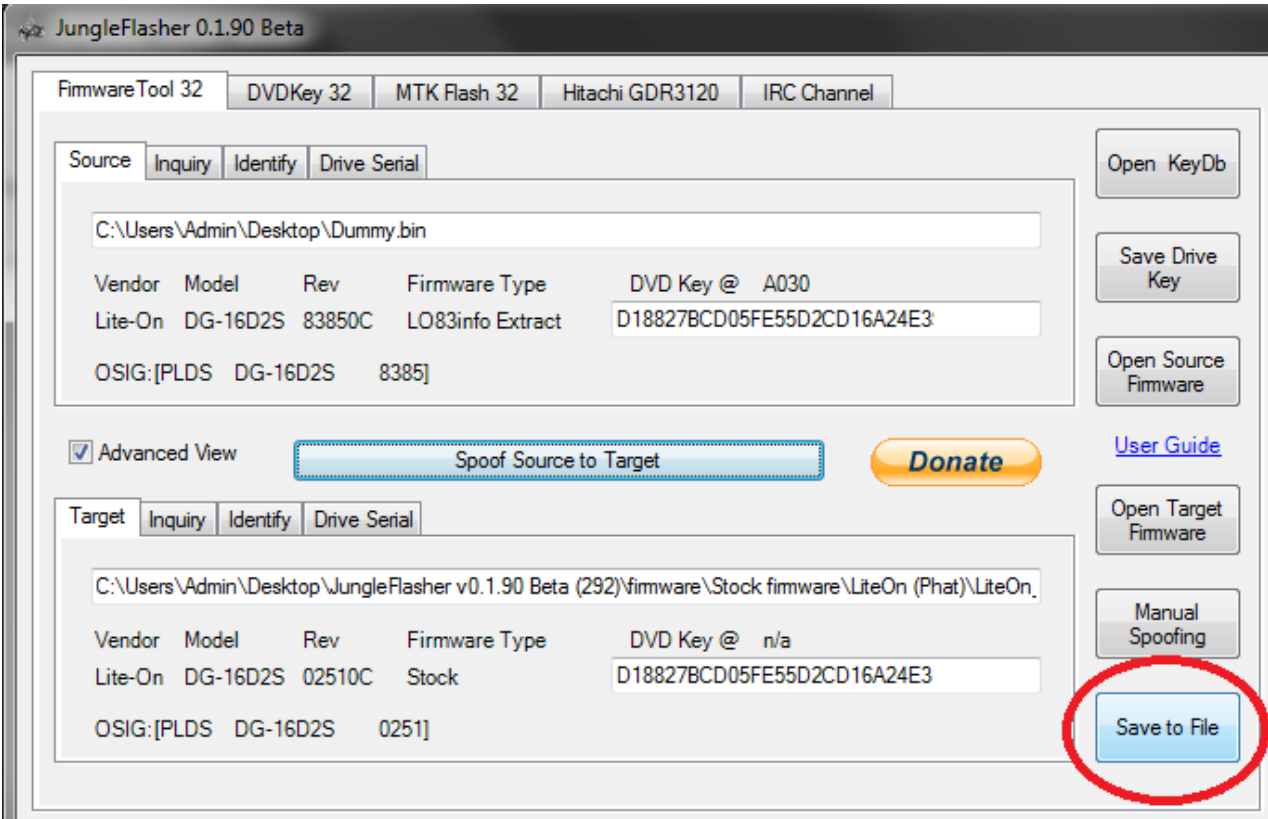
- BenQ
- Hitachi (Phat)
- Liteon (Phat)
- Samsung.

These are the 4 different companies that made DVD drive types of the Phat 360. You can see what DVD drive you have by looking at the text under Vendor on the tab you are currently on, or by simply looking at the large sticker that is on your DVD drive. If your drive is BenQ, then you must choose BenQ, if your drive is Samsung you must choose Samsung, if your drive is Liteon you must choose Liteon and if your drive is Hitachi, you must use one of the Hitachi files (there are 15 different types!). The original file you are opening is located in the respective folder, and then usually inside the "Post_13141" folder.

5. Once you have opened the file, your screen should look similar to this. With your DVD drive information up the top, and an original dump down the bottom. All you need to do now is press **Spoof to Target**. This will copy all of your DVD drive information into full firmware dump which is what the xk3y needs to work. Once you click the button you will see the DVD Key change from **FFFFFFFFFFFFFFFF** into your DVD Key.



6. The last step is to click **Save to File**. Save the file under the name **firmware.bin** the name must be in lowercase. Save it onto your PC for safe keeping, and then you will need to transfer thi file onto your xk3y MicroSD card on the 0.98mb Fat32 partition.



Ensure you safely eject the microSD card from your computer. Failure to do so will most likely corrupt your micro sd card in some way and cause the xk3y not to work.

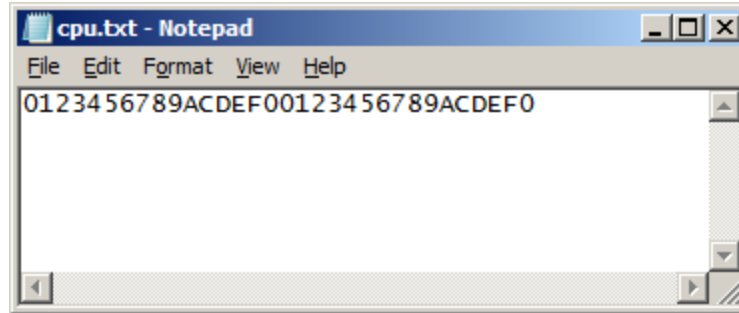
Slim configuration for console that need RGH

Step 1 RGH

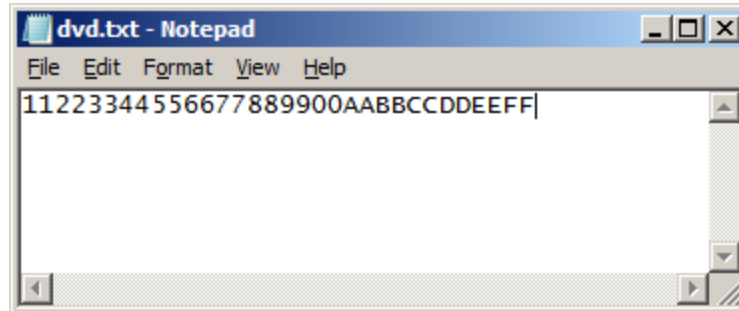
Many guides to performing the RGH are available on the internet. Boot Xell and obtain your CPU and DVD keys. You should also do a dump of your Xbox's NAND flash during the RGH process. If you do not have your DVD Key you will be able to extract it from the NAND (see step 3)

Step 2 Create the Keys Files

Use notepad to create a new file, copy in your CPU key, save the file as "cpu.txt"



Use notepad to create a new file, copy in your DVD key, save the file as "dvd.txt"



Step 3 Extract the FWCRT File

Download J-runner - <http://www.mediafire.com/?wivwbxpxj08xaae2>

- Start J-runner.
- Load Your Nand file into "Source File".
- Load CPU-Key into the CPU Key text field.
- This should automatically decrypt the nand and on the right hand side you will see a 'KV Info' tab. Your DVD key is here at the bottom.
- The last step is to extract "fcr_t_enc.bin". Click "Tools" and then "extract files"
- The file will be dumped into your 'working folder'. Click 'Show working folder' button in the bottom right hand corner and you can get the "fcr_t_enc.bin" file from your console there (Please note that the newer revision of J-runner will call this file fcr_t_en.bin, notice the missing 'c' on the end. Please rename this file **fcr_t_enc.bin!**)

Step 4 Configure Your Drive Type

Open Explorer and browse to your xk3y micro sd card.

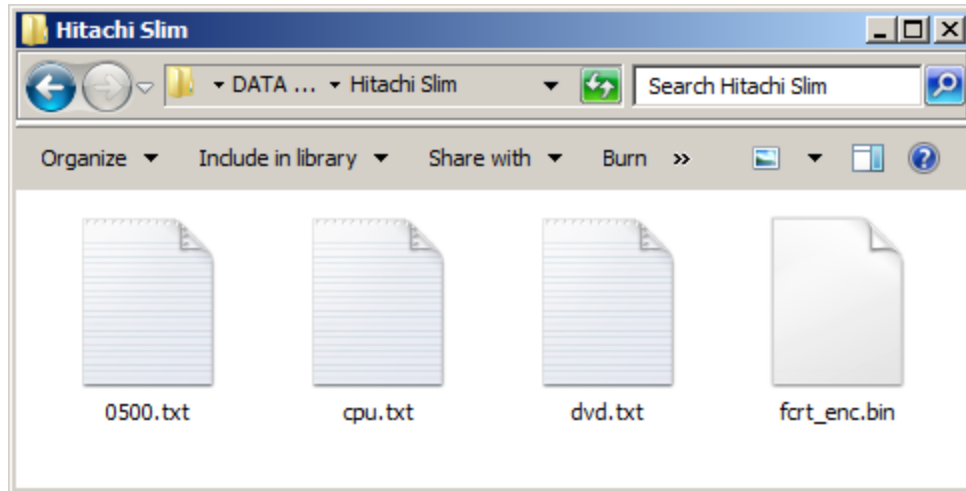
Put the following files onto the root of your micro sd card

1. cpu.txt
2. dvd.txt
3. fcr_t_enc.bin
4. *your Drive type text file*

If you have a Hitachi 0500 revision drive, create an empty text file called "0500.txt"

If you have a Hitachi 0502 revision drive, create an empty text file called “0502.txt”
If you have a Liteon 16D5S 1175 drive, create an empty text file called “1175.txt”
If you have a Liteon 16D5S 1532 drive, create an empty text file called “1532.txt”

Below is an example for the Hitachi 0500 drive



Be sure to “safely remove” the SD card before removing from your PC. Thats it!
Please note that you need to be on a higher firmware version for some drives to work. For example, 1532 Drive support was added with 1.27 firmware, and your xk3y might come with 1.26 out of the box. To overcome this, just power up your xbox in Passthrough mode (click eject to turn on). Update your xk3y from there, and then reboot.

Insulating the xk3y

Once the firmware has been installed on your micro sd card, insert the card into the xk3y main board. The microSD card slot is located at the back of the device. The xk3y comes with a small cardboard cut out to help to insulate the device. If your xk3y did not come with one, or you lost it you can use [this file here](#). If you are printing your own shield please use thick paper. Otherwise you can use electrical tape to cover the device.

Once the device is properly insulated please make sure there are no exposed metal components. If an exposed component touches up against the metal shielding on the 360 case you can easily render the xk3y broken, and even cause harm to your 360. If the cardboard shield is not covering everything then you can cover the exposed parts with a small bit of tape.

Installing xk3y in your 360

The device itself:

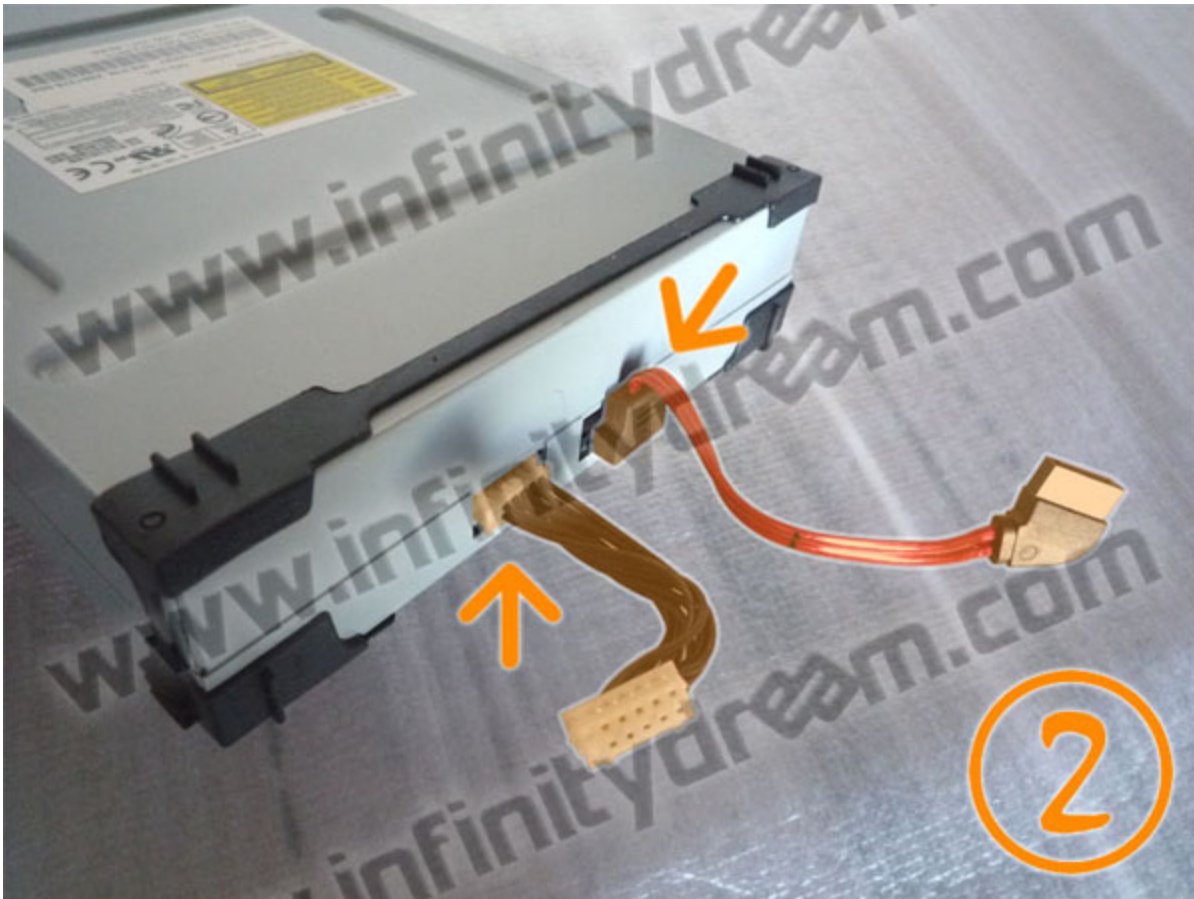
[Fat console](#)

[Slim console](#)

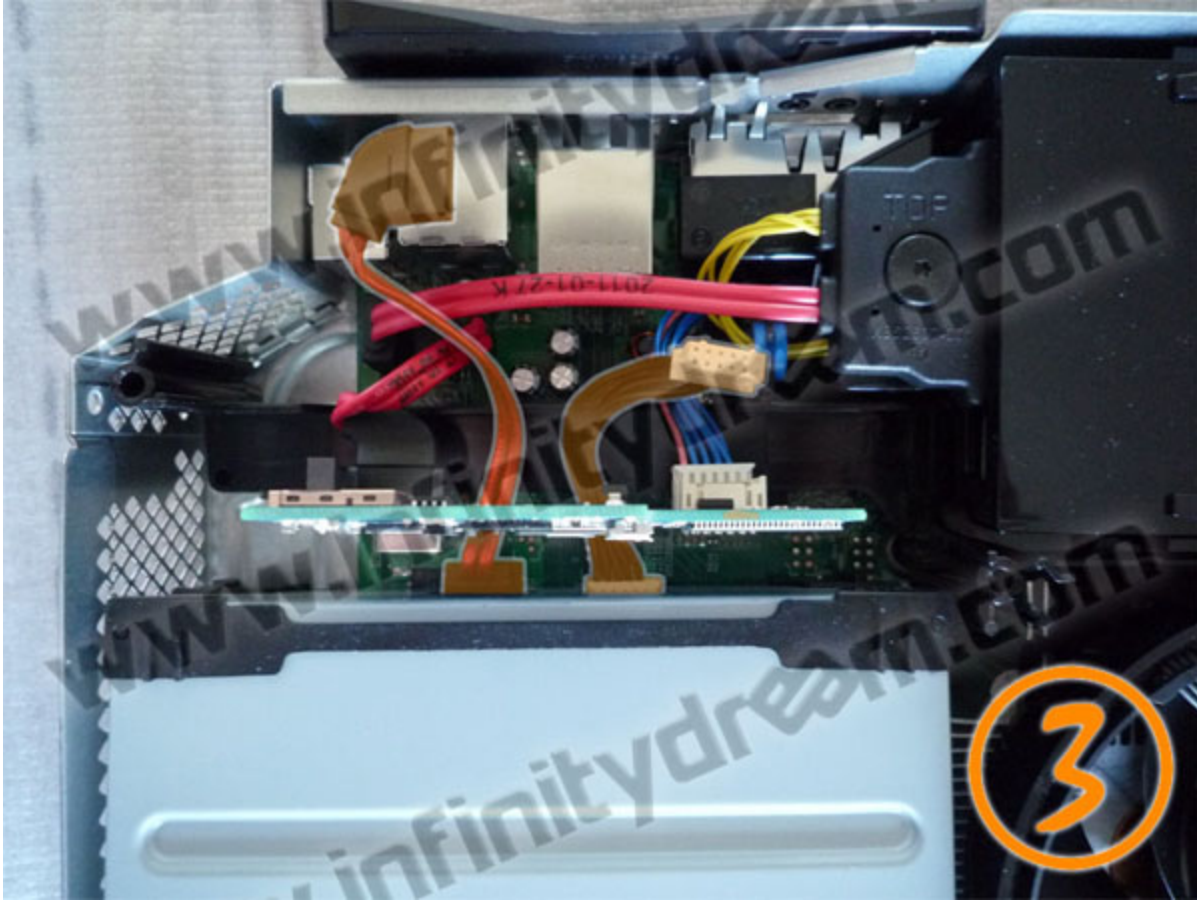
Step By Step with Images

1. Place the MicroSD in the xk3y then connect the cables from the motherboard to xk3y

2. Connect the provided cables to the drive (SATA + power)



3. Place the drive so that the cables run below the xk3y



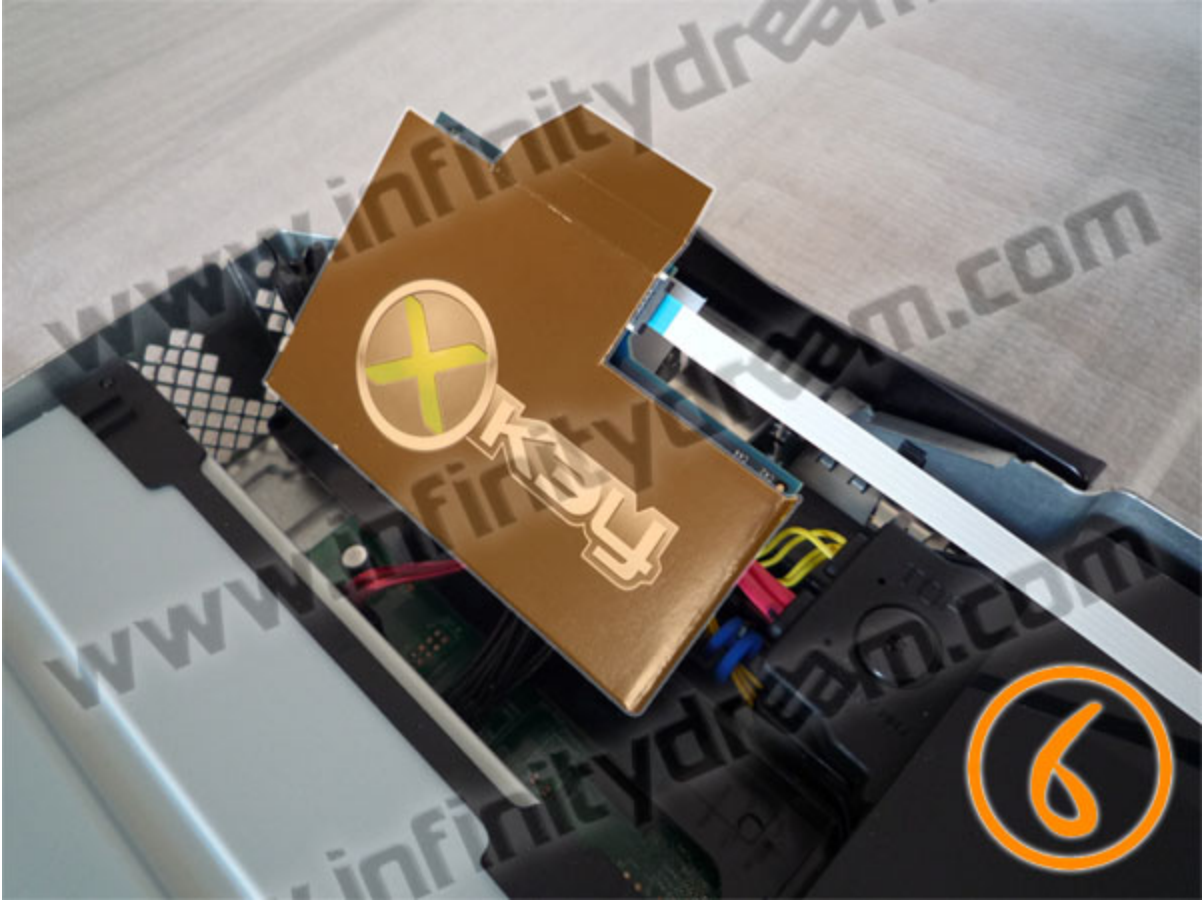
4. Connect the drive cables to xk3y



5. Connect the ribbon (Flexible Flat Cable) to xk3y



Note: if you are stuck in passthrough mode, it might mean that you connected the cables in the wrong positions. Please make sure you follow the picture below:



7. Pass the ribbon through the USB slot (blue side visible) then accommodate the xk3y in the corner of

the metal cage



8. Replace the drive in original position



9. Ensure that the xk3y is well positioned and the ribbon is not pinched during reassembly of the upper shell

10. Connect the external part of the ribbon to the xk3y USB dongle then connect the USB cable to the

xk3y remote. As per the warning that comes with the xk3y. The blue part of the cable need to be facing AWAY from the xbox. **Plugging the cable in the wrong way and plugging in the power will destroy your xk3y**



11. Connect the dongle to the USB plug and then connect the USB cable to the dongle... Switch on the console by power button to check the proper functioning of xk3y. If the console boots into “Emulation mode” then close the console

Connecting your xk3y :

Solution 1 using ISOMenu to select your games:



Xkey adaptor

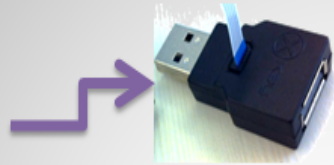


External Hard disk USB2
(no external power)

Nakamura78



Solution 2 using remote control to select your games:



Xkey adaptor



Xkey Remote

Nakamura78



External Hard disk USB2
(with external power)





Solution 3 using Wifi dongle



Closing the xbox 360 console

Please note that the videos below are for the 1st version of the xk3y which is no longer made, however the process is similar.

[Fat console](#)

[Slim console](#)

Part 2 - Changing settings with xkey.cfg

The Xk3y makes use of a config file called xkey.cfg to change settings on the device. The reason why there is no on screen menu on the remote to change settings is to ensure that users don't accidentally change settings, and that new settings can be rolled out by the xk3y team without making changes to the navigation of the menu.

A demo of the xkey.cfg file can be downloaded with every firmware upgrade. You can easily edit this file, or you can make your own using any text editor like notepad.

Once the changes have been made you need to update your xk3y. The update will only take 1 second due to the size of the file, and [details on how to perform updates are here](#)

Please note that the xkey.cfg is just a text file. Due to the way linux reads files files, if you are making your own file (i.e. not editing the supplied example file) you need 3 x carriage returns at the end of the file. This means you need to press the ENTER key on your keyboard 3 times right at the end of the file and then save the file. If you do not have these 3 lines the xk3y will not read the last 3 lines of your file.

Please note that in order for a setting to be used, you have to remove the “#” in front of it. # in front of a line means the line will be treated as a comment.

There are certain values that can be changed in the xkey.cfg file.

LANGUAGE=

The LANGUAGE parameter will change the language no the xk3y menu screen. Please note that Chinese xk3y cannot have their language changed. The default language is English. The current language possibilities are SCN,TCN,KOR,JPN,DEU,ENG,ESP,ITA,NED,POR,SWE.

For example if you wanted to change the language to Spanish you set

```
LANGUAGE=ESP
```

MENUISO=

MenuISO is a feature that will allow users to select ISO files from the xbox 360 dashboard, instead of the supplied screen. The feature will default to being off, to turn the feature on please set

```
MENUISO=Y
```

To select a game using the on screen menu, eject your DVD drive (pressing the eject button on your console OR just pressing A on the DVD drive panel on your 360 dashboard) The xkey will fake open the tray, load MenuISO which will appear as a Mixed Media Disc on your 360, and then close the tray. Click the xbox button (in the middle of your controller), go to the media tab (press RB on controller) and then go to 'Select music' . Click on 'current disc', then choose your harddrive on the right and choose your game from there. When the screen says 'Eject to load.mp3' you then Eject your DVD drive again, and the game will automatically load. The easiest way to eject is to press the XBOX button on your controller, then Y.

If you are playing a Multi Disc game there are 2 options. When the xbox prompts you to to insert another disc, you need to press the eject button twice quickly (within 1 second) and choose the 2nd game from the xk3y screen.

If you do not have the screen then follow the following steps:

1. Press eject when prompted for new disc
 - WAIT for "wrong disc" message to appear and click OK
2. Click home button on controller
3. Go right to media
4. Click "select music"
5. Click "current disc"
6. Press right and select your hdd
7. Select desired disc
8. Press eject when it states "eject try to load.mp3"
9. Press controller home button

If you are using the xk3y wifi dongle, then please keep MENUISO disabled.

ALTSLIMFW=

This parameter is for slim consoles that have been dumped with Jungle flasher. If you have a Phat console or a Slim console leave the value as ALTSLIMFW=0

For Slim consoles that say 0225 in Jungle Flasher but are 9504 labeled use the value ALTSLIMFW=7
For Slim consoles that say 0401 in Jungle Flasher but are 0225 labeled use the value ALTSLIMFW=8
For all other slim consoles, if you get errors when trying to launch a game ISO (like play DVD) try values from 1 to 6.

If you do not get errors then do not change the default value of 0.

SSID=

This is a xk3y Wifi setting, and is explained in the Wifi section.

PSK=

This is a xk3y Wifi setting, and is explained in the Wifi section.

WEP=

This is a xk3y Wifi setting, and is explained in the Wifi section.

IP=

This is a xk3y Wifi setting, and is explained in the Wifi section.

NETMASK=

This is a xk3y Wifi setting, and is explained in the Wifi section.

KEY=

This is a xk3y Wifi setting, and is explained in the Wifi section

RESUMELAST=

Setting RESUMELAST=Y, will load the last game played to the dash after you press eject upon first boot and hdd detection. After that, if you press eject again and have MenuISO enabled it will load that. This is a handy feature to have if you don't play a different game every time you turn on your xbox

DVDMENU=

DVD menu gives users the ability to customize and make DVD isos based off the ISOs on their HDD. This enabled custom menus, backgrounds, music, trailer etc. It is NOT dynamic, you will need to compile the file everytime you get a new ISO. [See here for info on DVD menu](#) -

Part 3 - Xk3y Use

Updating Xk3y

Updating the xk3y is as easy as dragging a file onto a USB storage device and inserting it into the xk3y screen. The files need to be placed on the root of the first partition of the hard drive. If they are placed anywhere else the xk3y will not update. When the xk3y finds files to update it will automatically begin the process of copying the files over to the internal micro SD card. You will see the message "Updating Please Wait". Once the update has finished, the message will change to "Update complete Restart XBOX". Do not unplug or turn off your xbox before the update is complete.

If you have used the USB device to update as you do to launch ISOs from, it is advised that you delete the update files once the update has complete. If you do not delete the files the xk3y will take a lot under to detect the USB device as the xk3y will be comparing the files every time your switch on your 360 to see if the update is different to the files that are already on your micro SD card.

There are 5 files that the xk3y will update if found. All files can be updated at the same time, they do not need to be done 1 by 1.

ulmage & rootfs

There are the normal xk3y firmware files. Always put these files in together, as the 2 files always work together.

xkey.cfg

This is a text file that allows you to change xk3y settings

firmware.bin or dummy.bin

In the rare case that Microsoft updates the DVD drive firmware again, or if you have made a mistake with your DVD drive firmware file, you can update this file without opening up your console again. Remember, firmware.bin for phat consoles, and dummy.bin for slims.

Emulation Mode Vs Passthrough

There are 2 modes the xk3y can enter. Emulation mode and Passthrough mode.

Emulation mode is the main mode you will use. This mode is when the xk3y is on, emulating your DVD drive to play ISO files from a storage device. To enter this mode simply turn your xbox on using the power button on the console, or by pressing the xbox button on your controller.

Passthrough mode disables the xk3y and allows you to use your DVD drive as normal. To enter this mode, turn your xbox on by pressing the eject button. Please note that on some slim models the console will not turn on when the eject button is pressed, even after making a sound after pressing the button. In this case press the power button, and then within a second, press the eject button.

You cannot switch modes without first turning your console off. If you want to switch modes, turn off your xbox for at least 5 seconds, and then turn it back on using the desired mode. If the xk3y is not changing mode, please unplug the 360 power from the back to ensure the xk3y is completely drained of any supplied power.

ISO storage

Compatible USB Storage devices

The xk3y is compatible with the following file systems

- NTFS
- FAT32 (however fat32 has a file size limit of 4gb so single and Dual layer ISOs do not fit)
- HPFS+ (Mac)
- Ext3 (linux)
- exFAT (coming soon!)

There are 3 possible storage devices you can use

- **3.5" Internally powered harddrive**
When you are using a 3.5" drive or any device like a hub that has its own power source please be sure you plug in the HDD and power up the HDD BEFORE you turn on your XBOX. Do not under any circumstances insert a powered device into the xk3y after the XBOX is on. The XBOX has a floating ground and inserting the device while the xbox is on can cause damage to your Xk3y and/or XBOX.
- **2.5" portable harddrive**
Portable Hard drives sometimes do not get enough power from the xk3y screen. The power is coming from 1 USB port on your XBOX. The USB port will power the screen first, and then give the remaining power to the attached hard drive. If your hard drive is not detected you can solve the issue by
 - Using a USB Y split cable
 - Using a powered USB hub
 - Totally ignoring the screen and plugging the hard drive directly into the USB dongle on the back of the 360 instead of the screen. You will need menuISO activated to choose the game.
- **USB Stick/ Flash Drive**

The Xk3y can detect and run multiple storage devices. If you use a hub you can plug in as many compatible

device as you wish.

2TB Maximum partition

Due to a technical limitation in Linux, the platform in which the xk3y is built on, a maximum of 2TB is visible on any one storage device. If you have a 2+ TB storage device the xk3y will not see the device. It is advised to partition your storage device into partitions that are smaller than 2TB. For example, if you have a 3TB storage device you can partition the device into 2 x 1.5 TB partitions and the xk3y will see both partitions as separate storage devices.

games Folder

The Xk3y will only look for ISO files in a folder on your Hard drive called **games**. If you call this folder anything else the xk3y will not find anything. The reason for the xk3y not searching the entire hard drive is so users can use their hard drive for other things besides their Xk3y. This also improves load times as the xk3y is not wasting time looking through directories where ISOs do not exist.

The Xk3y will find any valid ISO files inside the games directory. The xk3y will play anything that the xbox can play via disc. This includes 360 games, compatible original xbox games, DVD ISOs and Mixed media ISOs which include media such as videos and pictures.

If a large amount of ISO files are stored inside your Harddrive you can organise the content into folders inside the games folder. You can make as many folders as you like, and make folders inside your folders...as long as everything is under the games directory.

The xk3y mounts hard drives as read only. This means you do not have to worry about data corruption as the xk3y cannot write anything to the harddrive, just read!

Normal use through Screen:

The xk3y has 3 buttons. Up, down, and select/back. When the middle button is pushed it will select the option you are on. When you hold down this button for 1 second the xk3y will go back to the previous screen you are on (or go up 1 directory when you are browsing your games folder)

There are 3 options on the menu when powered up into Emulation mode.

- **Select game**

When clicked, this option allows you to select the storage devices you have plugged in. After selecting your USB device, browse to the ISO you want to load. After you select the ISO it should launch on your

360. If your DVD drive is in a closed status then the xk3y will flash the message 'open tray'. You can either click the physical eject button on your console, or you can click 'A' on your controller if you have the DVD drive panel selected on your 360. Please note that your 360 drive will not actually open, your xk3y is in emulation mode and is emulating (i.e. pretending) to be your DVD drive. The xk3y will load in the ISO, and then put the tray in the closed status, and proceed to run the ISO.

- **About xk3y**

This option will show you information about your xk3y and the way it is configured. It is a handy option to see your IP address if you are using an xk3y wifi dongle

- **Tray Status**

This is just a status line that will let you know if your emulated DVD drive has the tray open or closed.

Multi disc games

While in a multi disc game, you might be asked to change the disc on your 360,

Press the eject button on your console, select the desired ISO file. And the game should continue.

If you have MenuISO enabled

- Press the eject button twice in quick succession (double eject the drive)
- The remote will revert to the ISO list
- Select the desired ISO file.
- Press the eject button, and the game should continue.

WiFi dongle

If you bought a WiFi dongle, you also received a unique identifier for this dongle.

This key has to be pasted in the xkey.cfg in the following way:

```
KEY=YOUR_DONGLES_UNIQUE_ID
```

This isn't the only thing that has to be changed in the xkey.cfg. For the xk3y to know to which wireless network to connect, you're going to have to add the following to the xkey.cfg as well:, depending on your Wifi settings:

```
SSID=YOUR_NETWORK_BROADCAST_ID  
PSK=YOUR_PASSKEY  
WEP=YOUR_WEP_KEY
```

IP=IP_ASSIGNED_TO_xk3y
NETMASK=NETMASK_TO_USE

These are all the settings available, depending on your Wifi settings, change the following:

- **I have a WEP protected network with DHCP**

Enter the SSID field and the WEP field (WEP must be in hexadecimal format) and remove the other fields.

- **I have a WPA protected network with DHCP**

Enter the SSID field and the PSK field, remove the other fields.

- **I have an unprotected network with DHCP**

Only enter the SSID field, remove the other fields.

- **I want a specific IP/netmask to be used with my xk3y**

Enter one of the above 3 options, then enter the IP field with your desired IP. The default 255.255.255.0 netmask will be used. If you wish to use another netmask, enter that field as well. Otherwise remove it.

Update your xkey.cfg like you would usually do.

(If you can't connect, head over to Trouble Shooting)

In order to be able to use the dongle you're also going to be needed a USB Hub, so you can have both your HDD and dongle connected to the xk3y.

- Connect your USB Hub to the xk3y.
- Connect your HDD to one of the USB ports.
- Connect your WiFi dongle to another USB port.

Now just power on your Xbox and wait for the remote to say "NETWORK OK". The IP that has been assigned to the xk3y can be found in the "About" screen near the bottom.

Enter this IP in the URL bar of a web browser and you'll be presented with the Web Interface.

WiFi Interface

The WiFi interface is compatible with any browser that supports AJAX. It is recommended that you use a somewhat modern device to select games with.

If you don't have a cover for a certain game, it will show a replacement image instead.

If you have multiple HDD's connected to the xk3y, it will give you one interface to select from all of them.

Cover Slide

Only use this on fast devices, you can always try to use it on a slower device, but the result might disappoint you.

If you're using a touch based device, you can double tap the panel to go full screen. If that doesn't work, or if you're not using a touch based device, there's also a button in the top left corner that will allow you to enter and exit fullscreen.

If you're using a touch based device, you can swipe to change covers. If that doesn't work, or if you're not using a touch based device, you can click/tap the sides of the panel to switch covers. Alternatively you can also click/tap the covers in the bottom row.

When you've decided which game you want to play, you can click/tap the "Play" button in the top. It will load the game and bring up a dialog with a message based on your tray state and if you already have a game loaded. If a game is not loading, it is advised that you read this message.

Alphabetic Selection

This is the simplest selection method. All your games will be alphabetically listed and you can use the filter bar at the top to search for a specific game.

When you've decided which game you want to play, you can click/tap the game. It will load the game and bring up a dialog with a message based on your tray state and if you already have a game loaded. If a game is not loading, it is advised that you read this message.

Folder Structure

This will show you how you have set up the folders in your HDD. If you've categorised your games by genre, you can easily select them from here. When you have more than one HDD connected to the xk3y, and have the folder "Action" in more than one HDD, it will put all of the "Action" folders in one. If you wish to go up a folder, you have to click/tap the "..." folder. No search function is available here.

When you've decided which game you want to play, you can click/tap the game. It will load the game and bring up a dialog with a message based on your tray state and if you already have a game loaded. If a game is not loading, it is advised that you read this message.

About

Here you can view information about your xk3y. It will also show some information about the interface.

Part 4 - Trouble Shooting

Each xk3y is hand tested by the xk3y team. Most issues are user caused and the most common ones are explained below.

Incomplete software updates from ISO

Some updates from Microsoft are performed in 2 parts. 1 half of the update will complete, and then the console will reboot and it will attempt to perform the 2nd half of the update. If you are updating via disc an issue can arise. If the console does a hard reset, then it will unmount the disc image. This means that the 360 thinks you have ejected the “disc” you were updating off while the console rebooted. The xbox will ask you to insert the disc again, and display the error code.

There are 3 ways to fix this

1. If you have the xk3y screen, just click on the ISO again, and eject the drive, and it will complete the update.
2. If you don't have the screen, you can boot into passthrough mode and just insert an original copy of the game you were updating off
3. If you don't have the screen, and your disc won't read (or you don't have a working DVD drive), then you will have to download the SAME update and update via USB. [A list of all updates are here](#). Microsoft only provides download links for the latest firmware, so you will need to google the update number to find a 3rd party website to download from. Fun!

Flashing Blue Light

A Flashing Blue light on the xk3y main board generally means that the SD Card is UNREADABLE. This can happen due to bad contacts or corruption of the microSD card

Please be sure that the micro Sd card is properly in place. If it is in place then the other option is to reformat your microSD card, or if you have snapped your microSD card you can make a new one. Since the xk3y microSD has 3 partitions you cannot just drag files onto it. You will need to use a special tool to flash an Sd card image back on.

What you need:

- USB Image Tool (Here <http://www.alexpage.de/usb-image-tool/>)
- A XK SD card image file - [X3ky Micro Sd image](#)

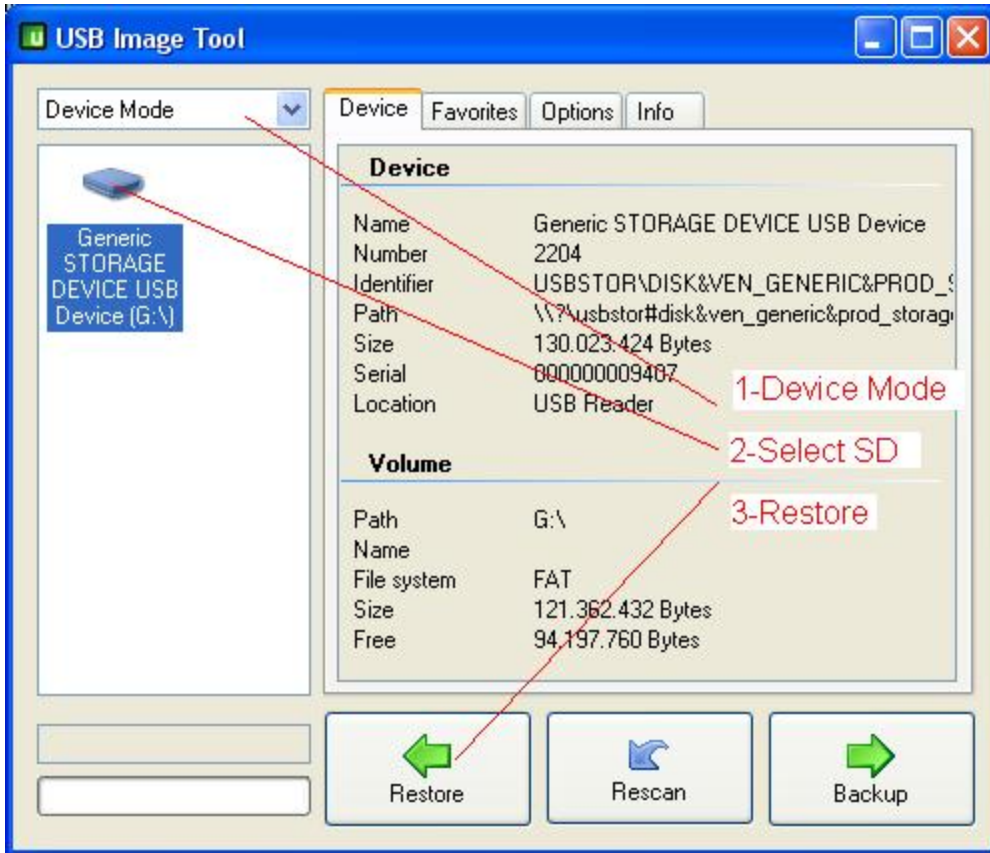
Getting ready:

- Unzip USB Image Tool to a directory on your Hard Disk.
- Unzip the xk3y SD card image file into the same directory.
- A micro SD card, preferably the 128MB card that came with XK but if this is not working you can use any micro SD card you have available

Writing the image:

- Plug your SD card into a USB card reader, plug the card reader into your PC. Note the drive letter Windows assigns to it
- Run the USB Image Tool (on Vista & 7 be sure to run it as Administrator)
- Make sure the USB Image Tool is in "Device Mode"
- Select the SD card from the list in USB Image Tool
- Click the "Restore" button in USB Image Tool
- A FileOpen Dialog will appear, select the XK SD card image file you unzipped previously
- Wait a few seconds for USB Image Tool to do its thing
- Eject/Safely Remove the SD card in explorer

You now have a factory fresh micro SD card with XK FW version 01.02 ready to use, add your firmware/dummy.bin file and test in your XK.



E64 Error

An e64 error is what is displayed on your TV screen (usually after your 360 freezes on the logo screen for 15 seconds) when the xk3y is not properly emulating the DVD drive. This can happen due to:

- SD card corruption during installation. Please see the post above to fix.
- The wrong naming convention for your firmware file. Remember, firmware.bin for Phat consoles and dummy.bin for slims. If you are using windows and hiding file extensions, please unhide them to be sure you are not naming the file firmware.bin.bin or dummy.bin.bin
- The wrong DVD drive type being emulated. This can be due to clicking the wrong buttons in jungle flasher, or perhaps buying a 2nd hand console and having the previous owner 'spoo' another DVD drive into your 360. This can be fixed by finding out which DVD drive is meant to originally be in your console (the OSIG) and emulating this firmware.

AP25 ERROR

AP2.5 is a special protection that Microsoft introduced in late 2010. The protection checks to see if the original game is inside the console or not. It does this by performing angular checks on the physical media. The protection was special since the questions that are asked of an original game could easily be changed with a software update. These checks were easily defeated by hard coding the responses into the ISO using a program called ABGX. The checks all came from a file called dae.bin which is encrypted and located on the 360 NAND.

The protection was stepped up a notch on November 17th 2011 when consoles connected to xbox live received a silent update to this file (offline users will also receive this update when updating to dashboard version 2.0.14699). The update changes the file again, but this time instead of every xbox in the world having the same file, everyone has a different set of questions. Therefore hard coding the response will no longer work and result in an Ap2.5 error.

The work around was figured out by the xk3y software team within 36 hours and involves profiling these discs. A profile of a disc is basically a file that has every single possible question that the DVD drive can ask the disc, and every single answer. This means that if the profile data exists for a game then the dae.bin file can be updated as many times as Microsoft want, but it is totally pointless as the xk3y will always return the correct result.

Not every single game is an AP2.5 game however there are 6 older AP2.5 games which are:

- Call of Duty: Black Ops
- Call of Duty: Modern Warfare 2
- Halo Reach
- Fable 3
- Need for Speed Hot Pursuit
- Assassin's Creed: Brotherhood

All of these games have a unique profile which is different for all games. Currently the xk3y on 1.10 firmware and above contains profiles for all games excluding "Need for Speed Hot Pursuit"

Every XGD3 games is also an AP2.5 games. XGD3 stands for Xbox Game Disc 3. The ISO has a slightly larger size and the games started appearing after Driver San Fransisco in September 2011. Currently all XGD3 games have the same profile. In the future profiles will change and Xk3y firmware will need to be updated.

In the future instead of including profiles inside the firmware, the xk3y will be able to read profile data as a separate file. Or be able to read profile data that is patched into an ISO. Details of this will be made clear at a later date.

1 RROD error

(Black screen on TV and one red light on console) when trying to load up an XGD3 game - you either have a drive that is not emulating properly (like a hitachi 47 at the moment) or you are emulating an older firmware, and not the new type. Ex: Emulating OFW for 73450c (also 74580c for a LITEON drive FAT console), when you are on a new dashboard and it should be 02510c. When emulating DVD drive firmware please be sure to use the latest firmware that supports XGD3 games as detailed in the installation section

Can't read your HDD

Please be sure that your USB storage device is receiving enough power, and that you are using a compatible file system. [More info here](#)

Slow Read Times from HDD (Games crashing or Stuttering)

This can be solved by:

- Using a faster Hard drive with a higher RPM
- Installing the game onto your internal XBOX Harddrive (direct sata is faster then USB 2)
- De-fragging your hard drive. This will put your data in a sequential order and allow slightly faster seek speeds when reading off the hard drive. [An example of how to do this in Windows](#)
- Formatting your HDD to Ext3 or Ext4 file system (Linux based, can be done in windows)

Xk3y remote stuck on xk3y logo

The Xk3y remote will display the xk3y logo whenever it receives power. It will even do it when plugged into a normal USB port. The remote will only display information when it is receiving information from the xk3y main board inside

If the xk3y remote is stuck on the xk3y logo then the connection between the remote and xk3y board is not being made. This can be due to improperly connected ribbon cables (check images in the installation guide for cable orientation of the USB dongle directly into the remote instead of the Xbox 360 USB port) or issues with the USB to MicroUSB cables. A screen frozen on the logo screen does not necessarily mean that the xk3y is not working. Remember, the screen is just to show the xk3y status and has a 1 port hub for your USB storage device. If your xbox is powering up, you can use the xk3y by enabling menuISO and plugging your storage device directly into the dongle. If this is working then the issues is obviously with the USB to Screen connection. It is possible that the MicroUSB cable is not making proper connection. You can shave off a millimeter of plastic off the micro USB cable so that it can be pushed in a little further. Please see the picture below.

DO NOT wriggle your usb cable into the screen. Micro USB ports are small and sensitive. If you wriggle the cable you **WILL snap the port on the screen.** Every screen is hand tested and working, so there is no reason to wriggle anything to get it to work. If this still doesn't work you can try and replace the USB to Micro USB cable.



Xbox resets every 5~15 minutes

Unfortunately at the moment this cannot be fixed at the moment. It affects a very very small amount of xboxs (maybe 1 in 300 or so). The same xk3y will work fine in another XBOX. The xk3y is not faulty, rather it is just not compatible with your console. It seems to affect only Phat consoles, and seems to also target older units.

WiFi dongle won't connect to my wireless network

Make sure you entered every field correctly, check for correctly capitalised SSID, passwords and key. Also make sure there are no extra spaced behind any of the entered values. As of right now, it's not possible to connect to a hidden SSID. You'll have to broadcast your SSID for it to connect.

Sometimes there is a setting in your router that is preventing the dongle to connect. Look for MAC Address filters and DHCP settings. If you can't get the DHCP to give the dongle an IP, enter your desired IP in the IP field. (Documented in the Wifi section)

Sometimes a dongle can't work with a specific USB hub. To troubleshoot, insert your dongle directly into the computer, remove it, and see if it connects. If it does, you need to use another USB hub, if it doesn't, continue trying to find the problem.