



Professional Audio Products Technical Bulletin 10-2006-020

DATE: **May 8, 2006**SUBJECT: **SUPPORT FOR FWD-40LX1/32LX1R**

MODEL: **SRP-X500P**
SRP-X500P
SRP-X500P//K
SRP-X500P//K
SRP-X500P=K1
SRP-X500P=K1

SERIAL NO: **ALL**

Italicized information in green applies to customers outside the United States.

DESCRIPTION

The preset for FWD-40LX1/32LX1R is not yet supported in the projector control function of SRP-X500P. To control FWD-40LX1/32LX1R from SRP-X500P before support is available, set the protocol file manually in the USER DEFINE menu as follows.

SETTING PROCEDURE

1. Connect SRP-X500P and the PC with an RS-232C cross cable.
2. Set the PROJECTOR PROTOCOL switch on the front of SRP-X500P to 0, and turn SRP-X500P ON.
3. Start SRP-X500P Manager.
4. Choose Communication > Connect, and click Download.
5. In the PARALLEL/PROJECTOR CONTROL tab, click PROJECTOR PROTOCOL. (See Figure 1.)

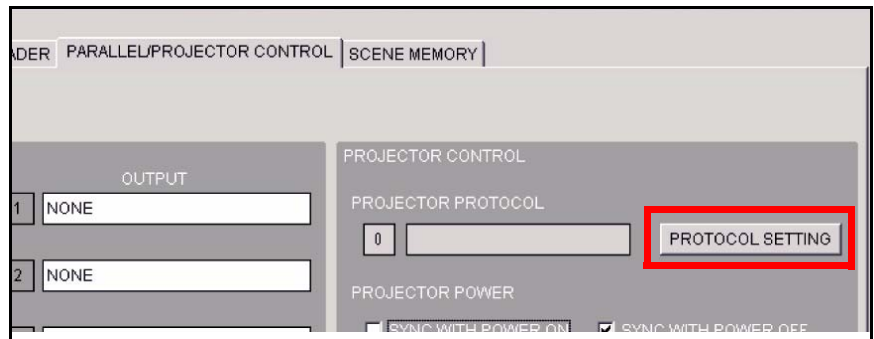


Figure 1

6. Enter protocol settings as shown in Table 1, and save the file as FWD-40LX1.pj5.

Table 1. FWD-40LX1/32LX1R Protocol Settings

Item		Setting	
INDEX		FWD-40LX1	
PORT SETTING	BITS PER SECOND	9600	
	PARITY BIT	NONE	
PROJECTOR POWER ON	COMMAND	8C000002018F	
	WAIT	12	
PROJECTOR POWER STANDBY	COMMAND	8C000002008E	
	WAIT	12	
PROJECTOR INPUT SELECT	VIDEO	COMMAND 1	8C0001020C9B
		COMMAND 2	
	RGB	COMMAND 1	8C0001020A99
		COMMAND 2	
	COMPONENT	COMMAND 1	8C0001020B9A
		COMMAND 2	
	OTHER TERMINAL	COMMAND 1	8C0001020D9C
		COMMAND 2	
	WAIT 1		1
	WAIT 2		3

NOTE:

- The video input adapter board (BKM-FW10) in slot 1 is set with the VIDEO/OTHER TERMINAL command.
- S VIDEO is set with the OTHER TERMINAL command.

7. In the PROTOCOL SETTING window, choose File > Open.
8. Select the FWD-40LX1.pj5 file in the file selection dialog box, and click Open.

CONFIRMATION

1. Turn FWD-40LX1/32LX1R ON (ON/STANDBY).
2. Select the input terminal from SRP-X500P.
3. Confirm that the projector can be controlled.

NOTE: When an option adapter with a communication function (such as BKM-FW32 or BKM-FW50) is installed in slot 1, FWD-40LX1/32LX1R cannot be controlled from SRP-X500P through RS-232C.