



Display

Video Products Technical Bulletin 30-2004-146R

DATE: December 19, 2005

SUBJECT: RETRACE LINES; NO PICTURE



MODEL: **PVM-14L1**
PVM-14L1//C
PVM-14L1MDE
SSM-14L1



SERIAL NO:
PVM-14L1 6,200,001–6,209,641
PVM-14L1//C 6,800,001–6,804,242
PVM-14L1MDE 6,200,001–6,201,048
SSM-14L1 6,200,001–6,204,320

Italicized information in green applies to customers outside the United States.

DESCRIPTION

CRT discharge may damage the video output IC (IC701) and/or related parts. As a result, retrace lines are visible on the screen or there is no picture.

Some of the parts that may become damaged are as follows:

Board	Part	Board	Part
C	IC701	A	IC001
C	R700	A	R009
C	C750	A	R010
C	D750	A	R011

PARTS REQUIRED

Part No.	Description	Qty.
8-719-901-83	Diode 1SS83	3
8-719-110-09	Diode RD8.2ES-B3	1
1-517-712-11	Spark gap 750V	2
1-519-422-11	Spark gap 1.5 kV	1

Also Required: Sony RTV (7-322-065-72 or equivalent)

ORDERING INFORMATION

To order upgrades or for regional service center and parts ordering information, refer to the following document, which lists all contact telephone numbers:

Technical Bulletin 001999000

DPM004-025R

MODIFICATION PROCEDURE

C Board (Side B, Zone B-1)

1. Scrape to remove the coating of solder resist over the GND point near R722 as shown in Figure 1.
2. Add 1SS83 diodes between:
 - (A) R722 (left) GND
 - (B) R723 (bottom) . . . C751 (GND)
 - (C) R741 (top) C750 (negative)
3. Apply RTV as shown in Figure 1.

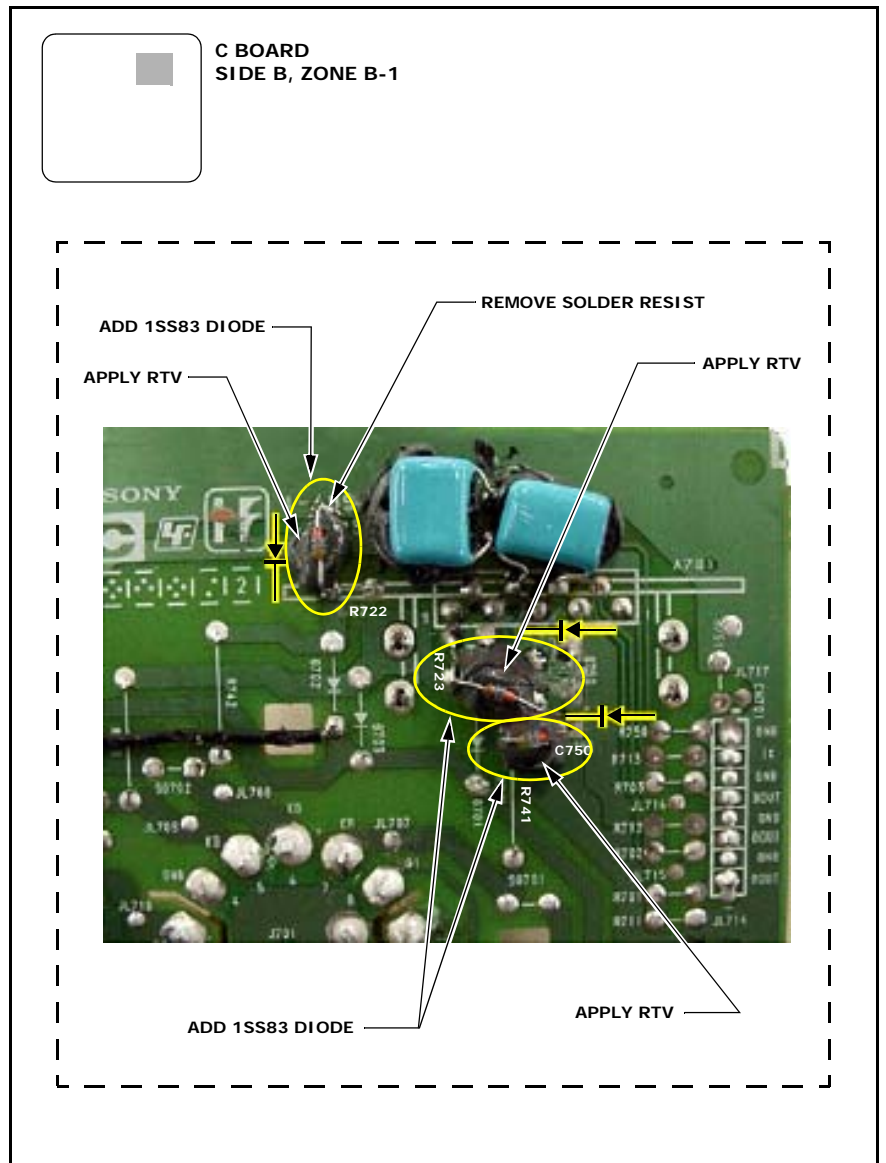


Figure 1

C Board (Side B, Zone C-3)

4. Add 750V spark gaps to C771 and C770. (See Figure 2.)
5. Apply RTV as shown in Figure 2.

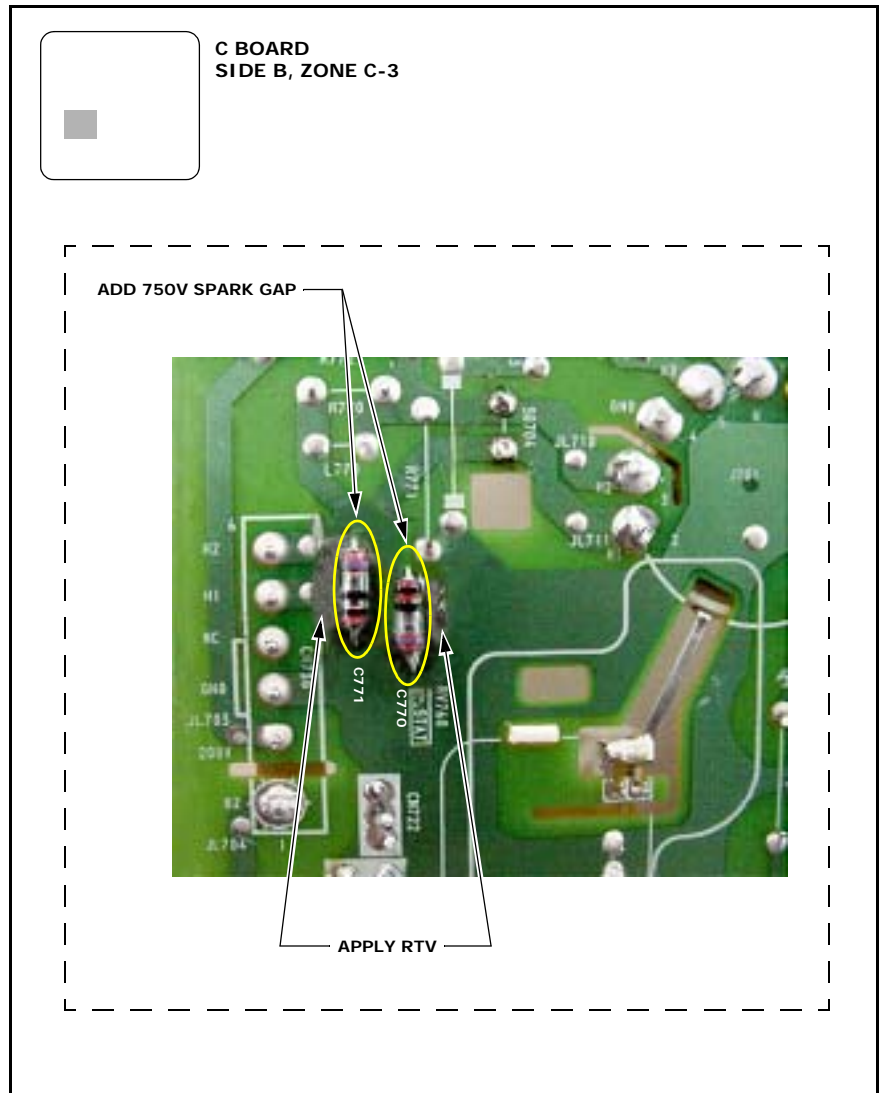


Figure 2

C Board (Side A)

6. Add a RD8.2ES-B3 diode to SG704 (zone C-2) as shown in Figure 3.
7. Add a 1.5 kV spark gap to SG790 (zone B-3).

