



Display

Broadcast Products Technical Bulletin 20-2003-145

DATE: **July 7, 2003**SUBJECT: **REUSE IC1 WHEN REPLACING GA BOARD**

MODEL: ***BVM-1410C***
BVM-1410P
BVM-2010C
BVM-2010P
BVM-2010PD
BVM-2012P

SERIAL NO: **ALL**

Italicized information in green applies to customers outside the United States.

DESCRIPTION

When replacing the GA board (A-1316-056-B), remove IC1 (1-806-805-11) from the former board and solder it to the new board.

The new GA board does not contain IC1, and IC1 is no longer available as a service part. (See Figure 1.)

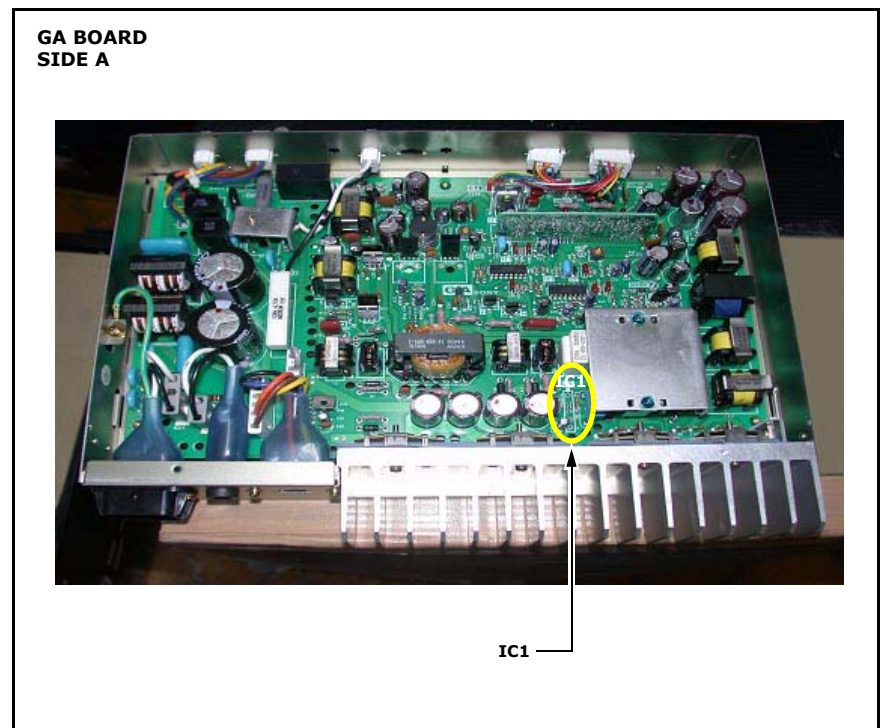


Figure 1

DPM003-029