



Display

Date: **March 8, 1999**

Subject: **CORRECTING RINGING AT TOP OF PICTURE**

Model: **BVM-14E1U, BVM-14E5U, BVM-14F1U**
BVM-14F5U, BVM-20E1U, BVM-20F1U

Serial No: **SEE TEXT**

DESCRIPTION

If ringing appears at the top of a picture, perform the following modification procedure.

This bulletin affects units with the following serial numbers:

BVM-14E1U	21,000,180 and higher
BVM-14E5U	21,000,045 and higher
BVM-14F1U	21,000,020 and higher
BVM-14F5U	21,000,120 and higher
BVM-20E1U	21,000,075 and higher
BVM-20F1U	21,000,310 and higher

PARTS REQUIRED

Part No.	Description	Qty.
A-1343-536-A	EA Board	1
8-719-500-42	Diode D8LCA20R-F (D55)	

NOTE: This procedure also requires a 100mm jumper wire.

MODIFICATION PROCEDURE

E Board (Side A)
 (See Figure 1.)

1. Remove D board.
2. Remove resistor R51 and diode D55 (zone B-11).

EA Board (Component Side)
 (See Figure 2.)

3. Cut pins 2, 3 and 5 of connector CN1.
4. Solder one lead of 100mm jumper wire to J1 land.

Solder Side

5. Trim all leads of components to less than 1mm, to prevent contact with other components when board is installed on E board.

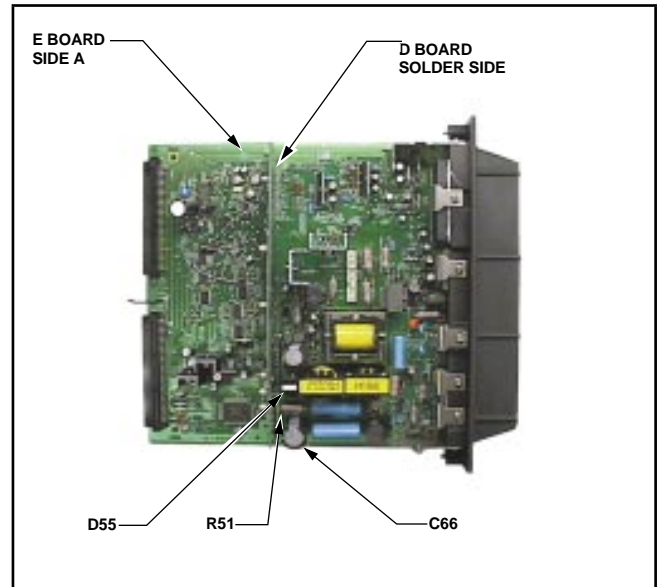


Figure 1

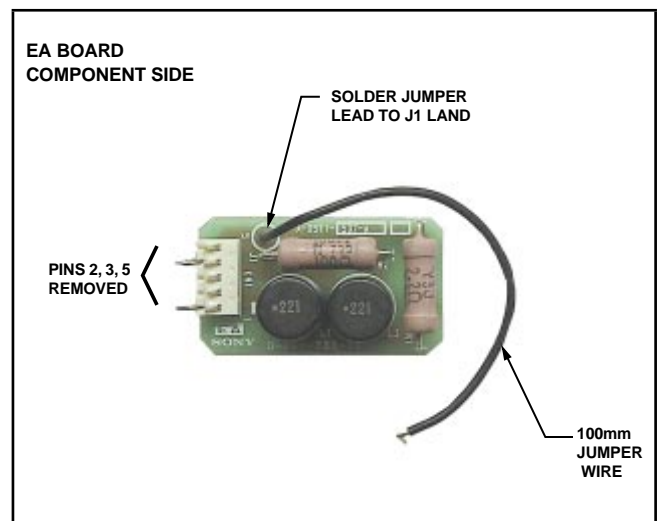


Figure 2



E Board (Side A, Zone A/B-11)
(See Figures 3 and 4.)

6. Install new diode D55 in location of former part, which was removed in step 2 above.

NOTE: Ensure that D55 is mounted at a slant as shown.

7. Install EA board in location of R51 which was removed in step 2 above.

NOTE: Ensure that EA board leads on solder side do not contact capacitor C66.

8. Insert and solder other lead of 100mm jumper wire on EA board in thru-hole between C66 and lead of C44 near C66.

9. Apply RTV as shown to secure jumper wire to E board.

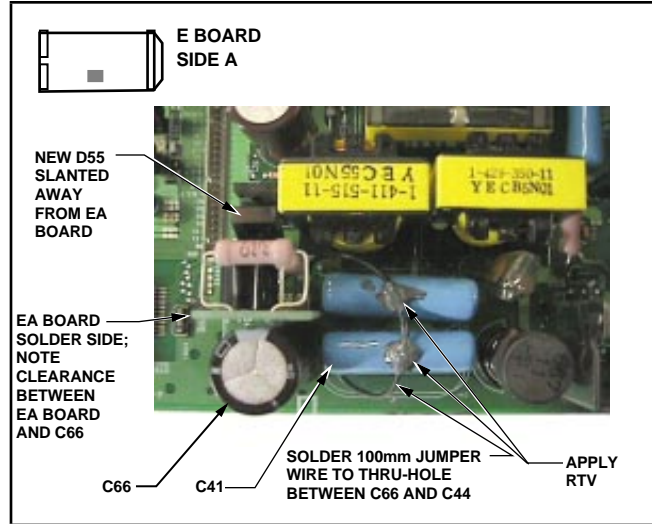


Figure 3

D Board (Solder Side)
(See Figure 5.)

10. Remove capacitor C301 (zone A-5) and resolder, repositioning it as shown.

11. Apply RTV as shown, to secure C301 to board.

12. Reinstall D board, which was removed in step 1 above.

E Board (Side B)

13. Trim leads of EA board, which was installed in step 7 above, and jumper wire, which was soldered in thru-hole in step 8 above.

NOTE:

- EA board schematic is as shown in Figure 6.
- E board schematic has changed as shown in Figure 7, due to removal of R51 and addition of EA board.

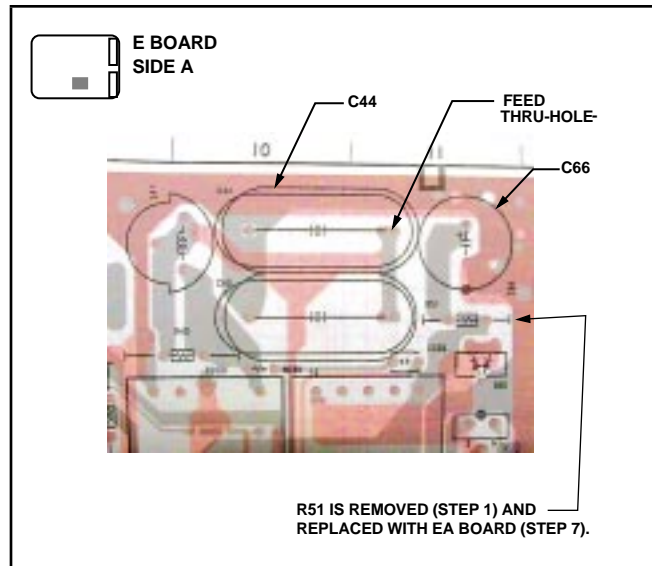


Figure 4

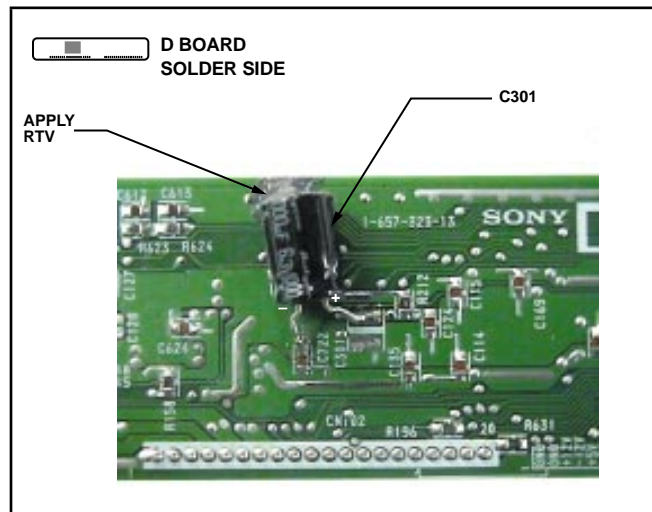


Figure 5

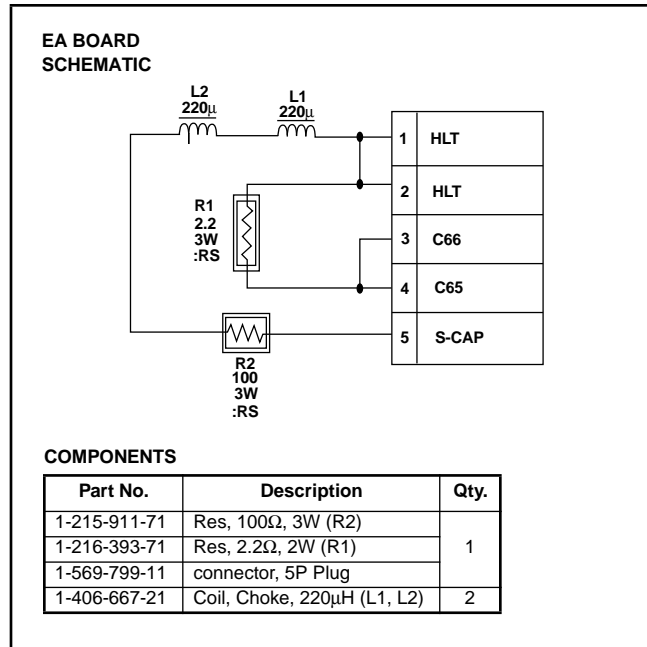


Figure 6

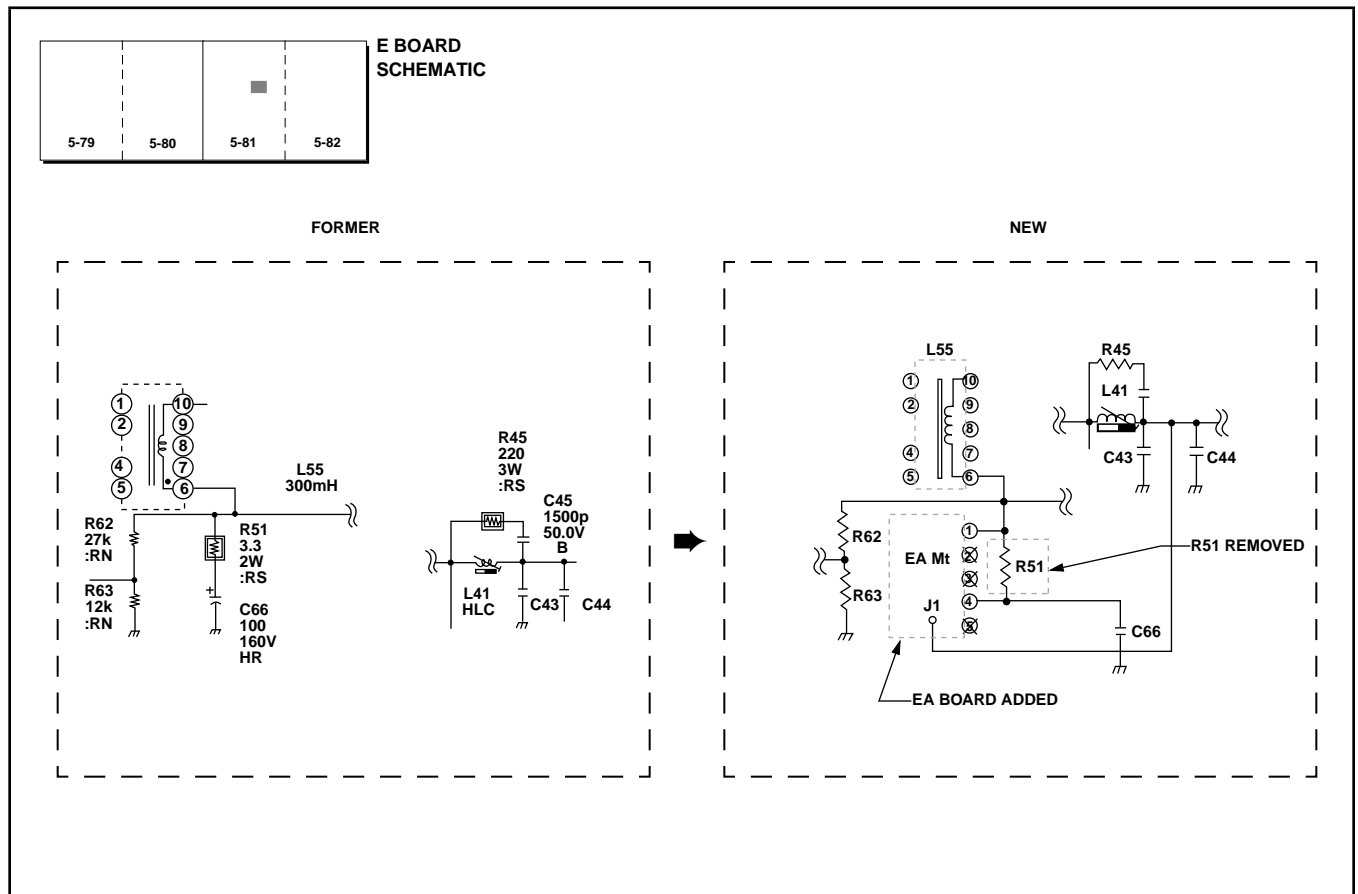


Figure 7