

E3 ODE PRO Installation Manual v1.23

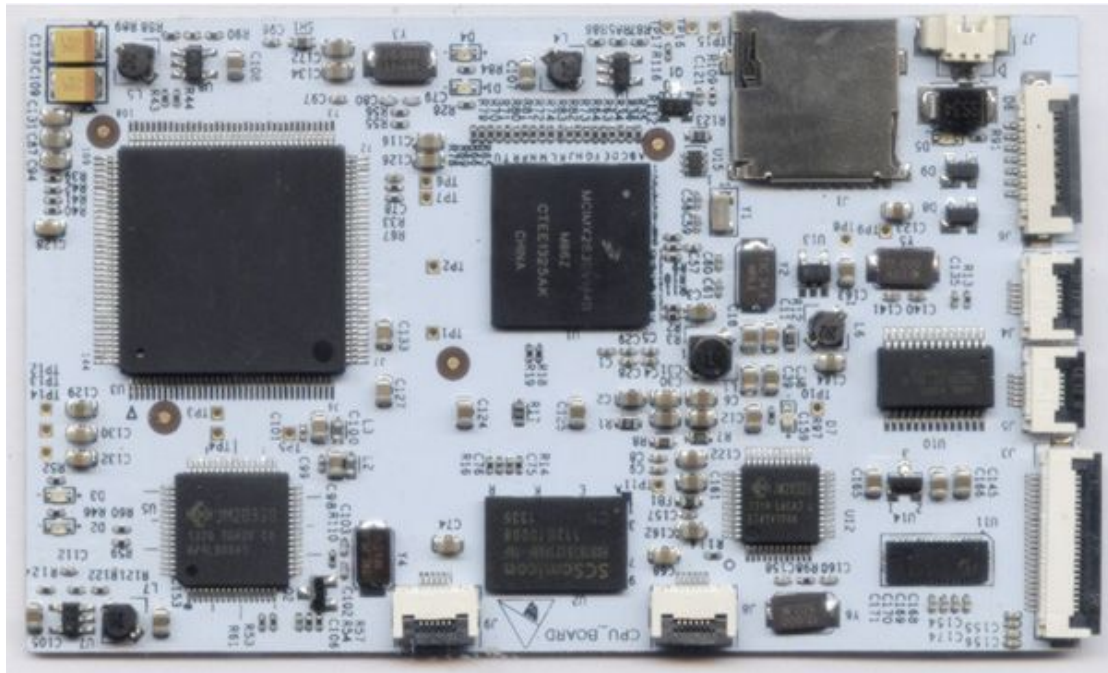
The E3 ODE PRO is the best ODE for PS3 in the world . NO restart, No eject, easy to upgrade and easy to use.

E3 ODE PRO support all slim console include 2XXXX, 3XXXX and 4XXXX .

We recommend user upgrade your PS3 console to latest firmware before install E3 ODE PRO

Some user want change PS3 inner harddisk, We recommend user change PS3 hardisk before install E3 ODE PRO

Installation of the E3 ODE PRO is quick and convenient.



The E3 ODE RPO pack includes:

- 1 x E3 ODE PRO Main board
- 1 x SOLDER BOARD
- 1 x USB STICK
- 1 x each of the following FFC cables:

Cable Types

Type A FFC LVDS Cable, 24 Positions, Opposite side contact, 300mm
Type B FFC LVDS Cable, 7 Positions, Opposite side contact, 400mm
Type C FFC LVDS Cable, 6 Positions, Same side contact, 200mm
Type D FFC LVDS Cable, 6 Positions, Opposite side contact, 200mm
1 x power cables

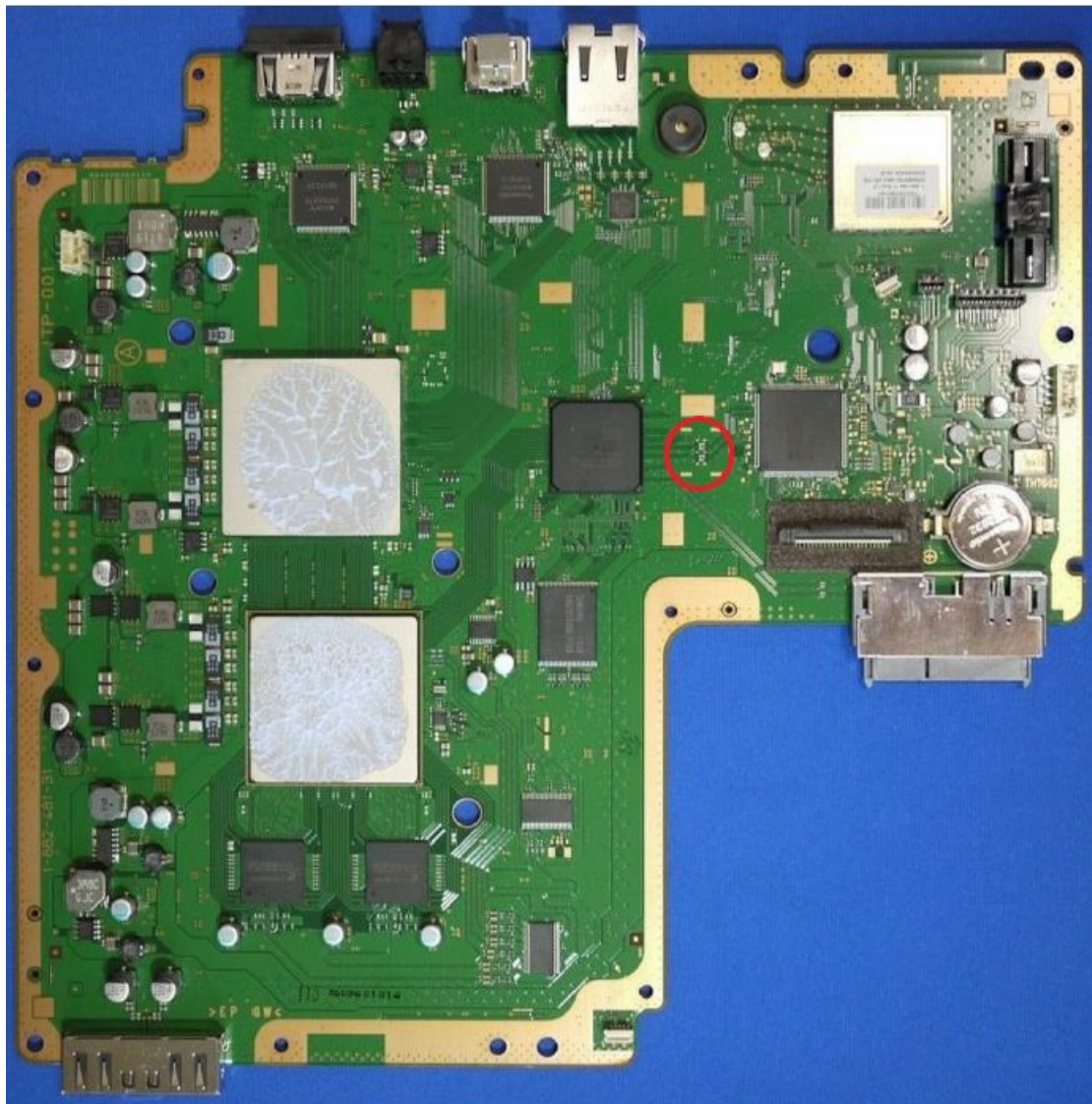
Installation on SLIM and SUPER SLIM models (CECH 25XX, CECH 3XXX and CECH 4XXX)

Carefully remove the resistors in the SATA signals area highlighted in the red circle in the pictures below, for your respective console model, using a fine tip low power soldering iron. Please take absolute care when doing so, as these traces are essential for the console and ODE to function:

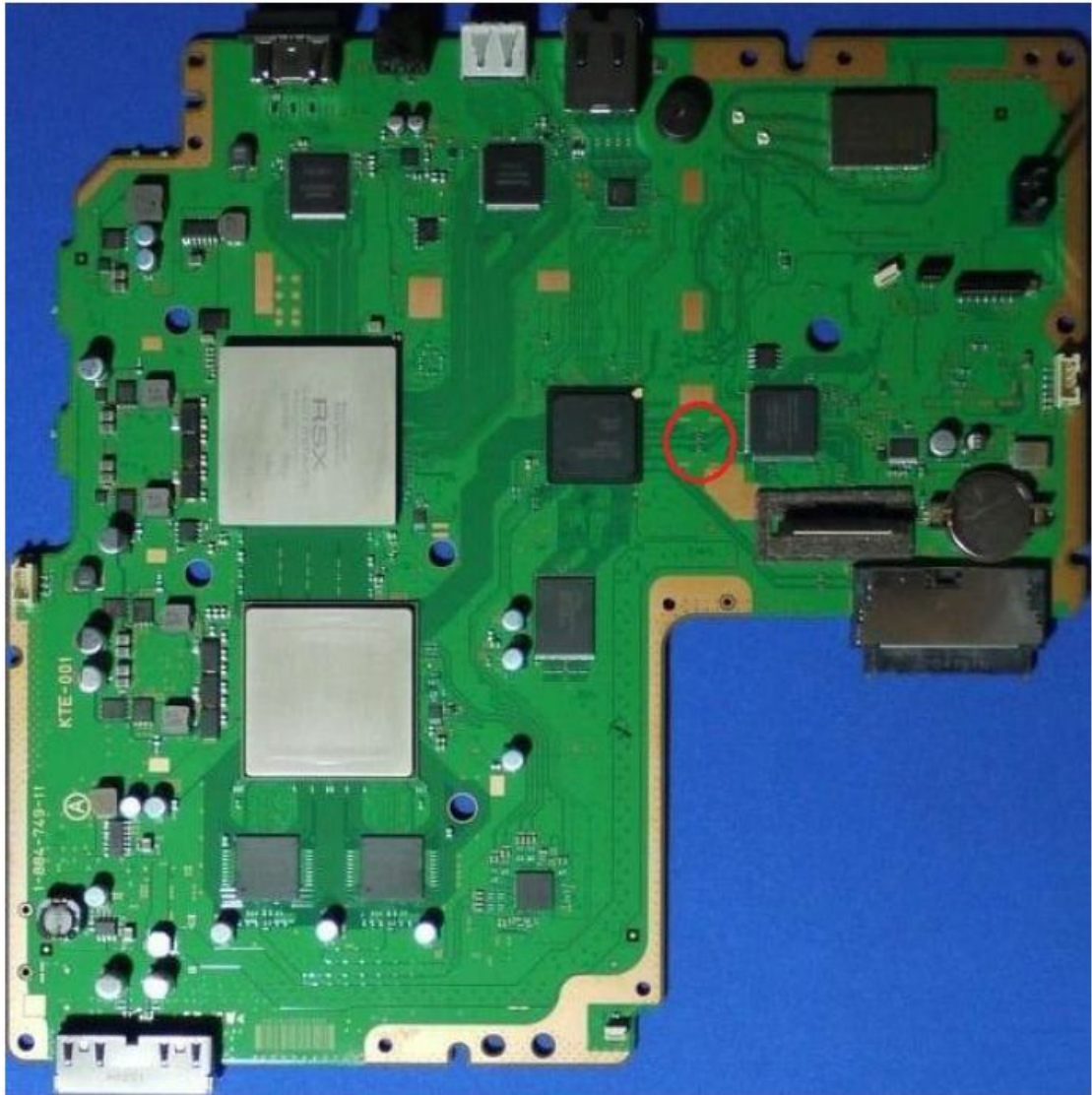
25XX JSD-001 Motherboard shown here:



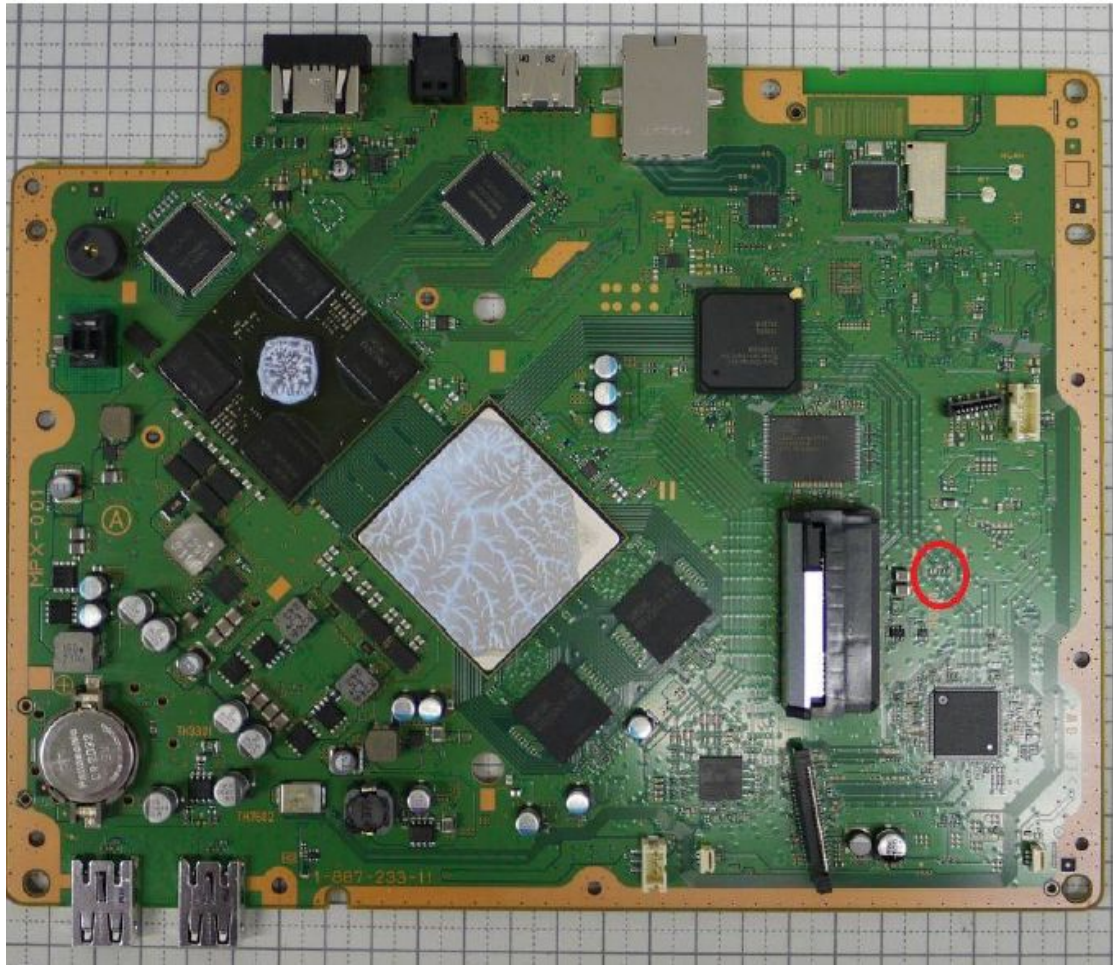
25XX JTP-001 Motherboard shown here:



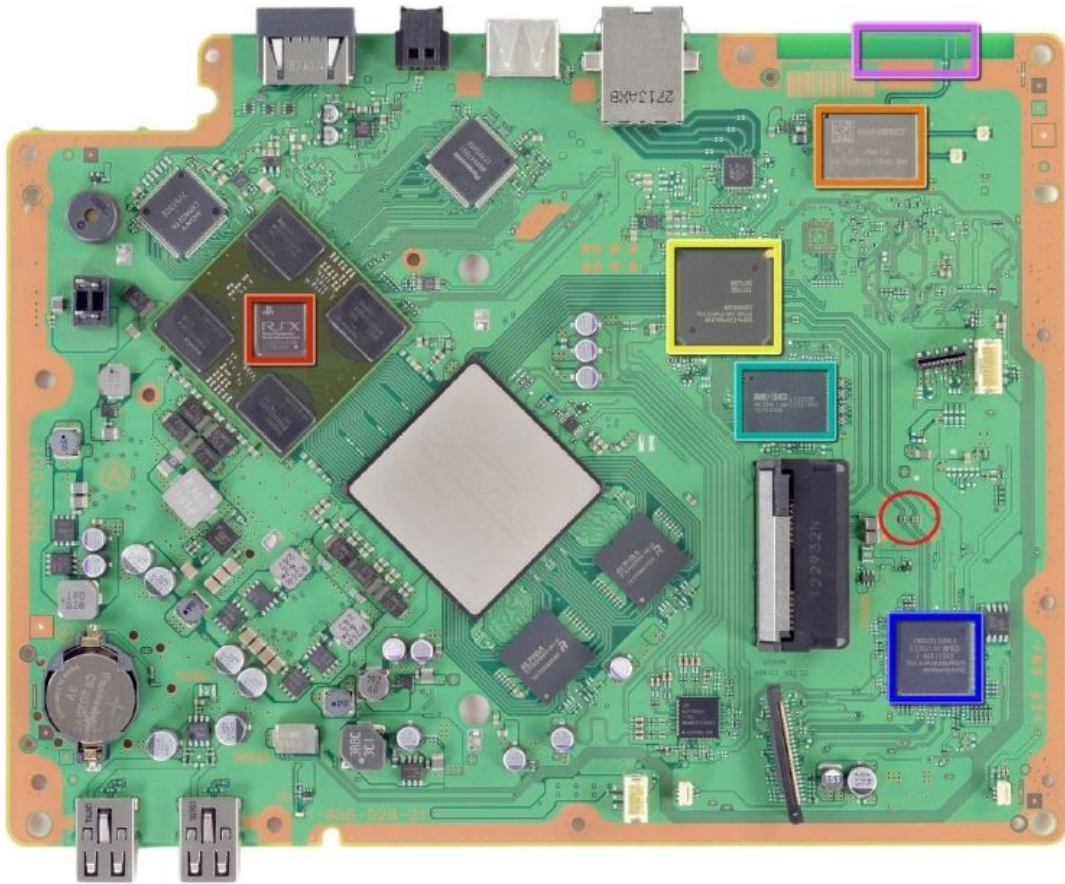
3XXX KTE-001 Motherboard shown here:



4XXX MPX-001 Motherboard shown here:



4XXX MSX-001 Motherboard shown here:



Credit to PS3 Dev Wiki for Motherboard images shown.

Once you have removed the resistors from the SATA lines and placed the solder board on top of your Motherboard in alignment with solder pads, it should look something like this:



Once you have soldered the solder board to your console Motherboard, it should look similar to the image below:

25xx/3xxx shown here:

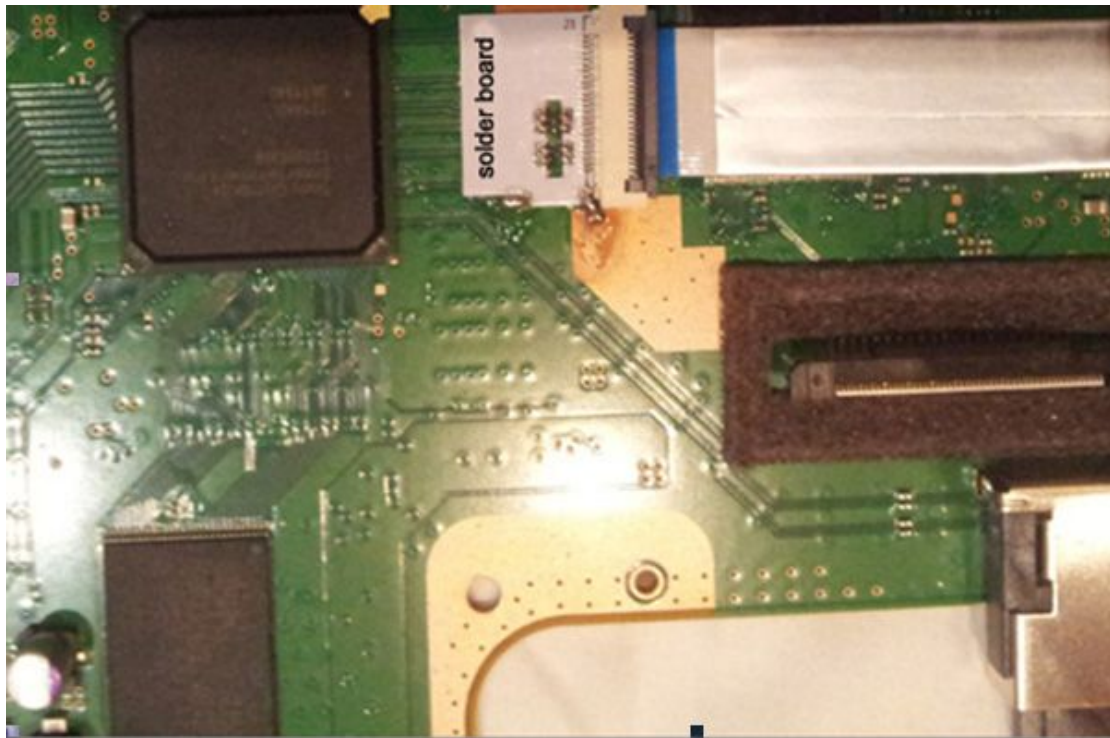


4xxx shown here:



Then insert the 24 pin FFC LVDS cable (Marked as F the table above) between solder board on the ODE and 24 pin FFC LVDS connector on the solder board which you soldered to the console motherboard.

25xx/3xxx shown here:

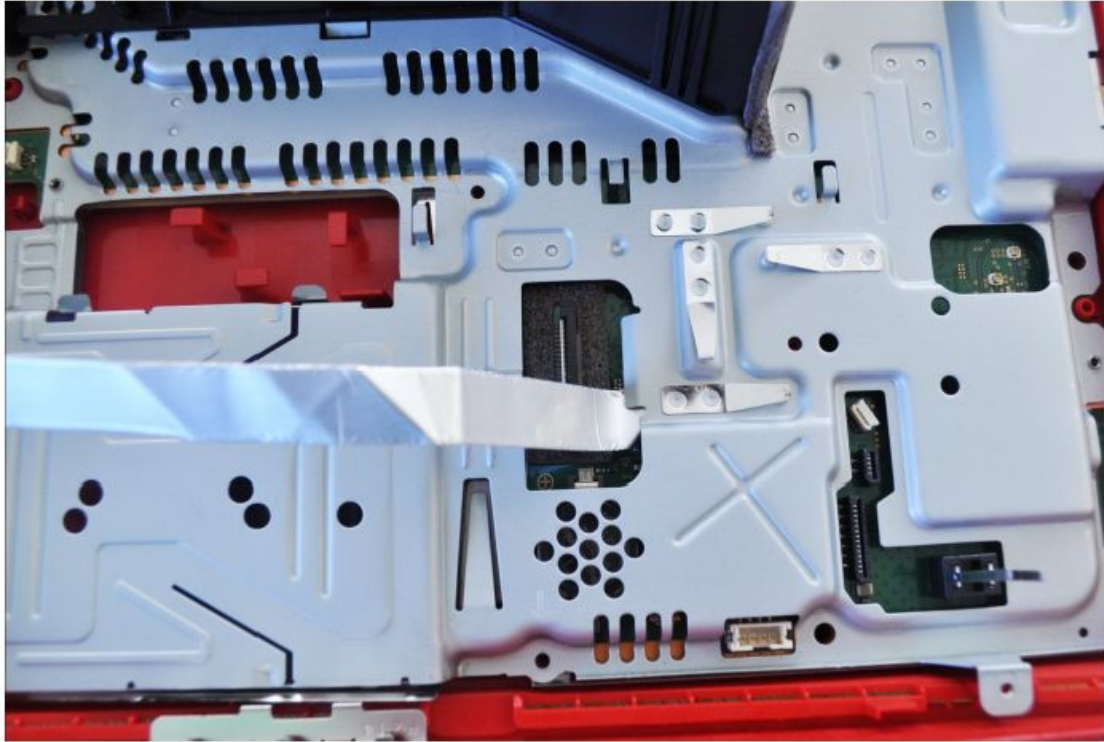


4xxx shown here:



Route the FFC cable out of the shielding as shown:

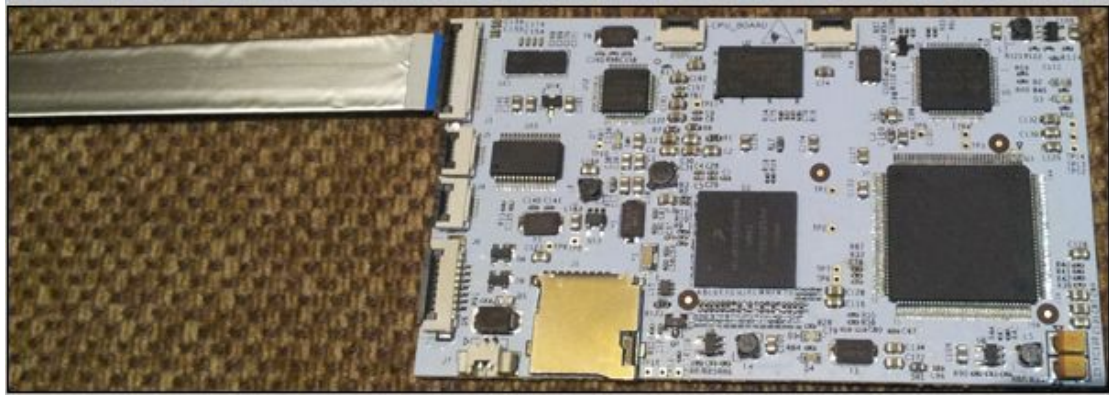
25xx/3xxx shown here:



4xxx shown here:

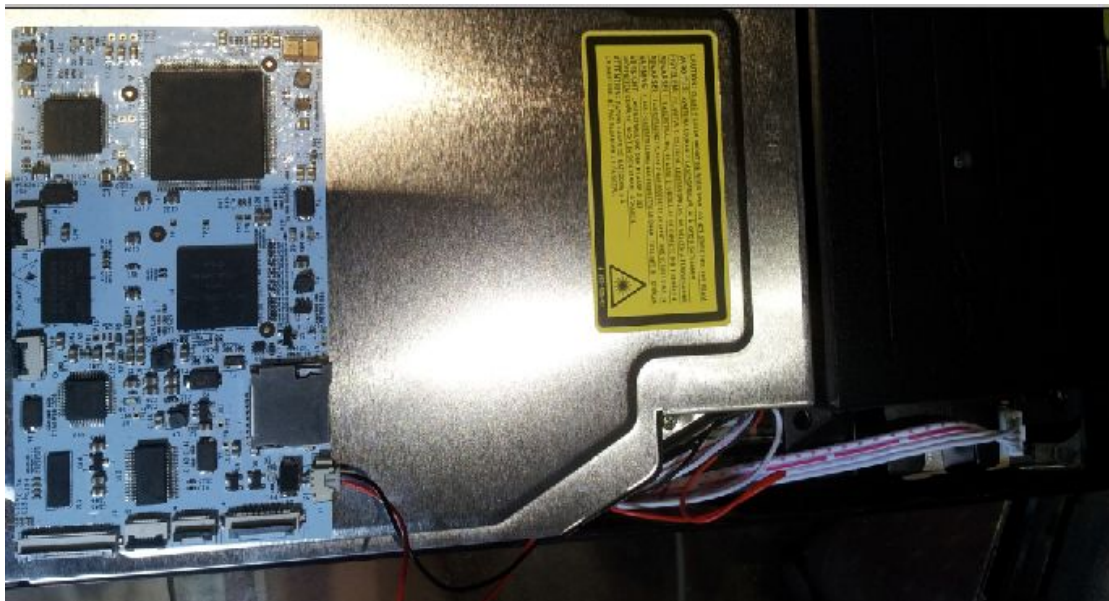


Relevant connector on E3 ODE PRO shown:

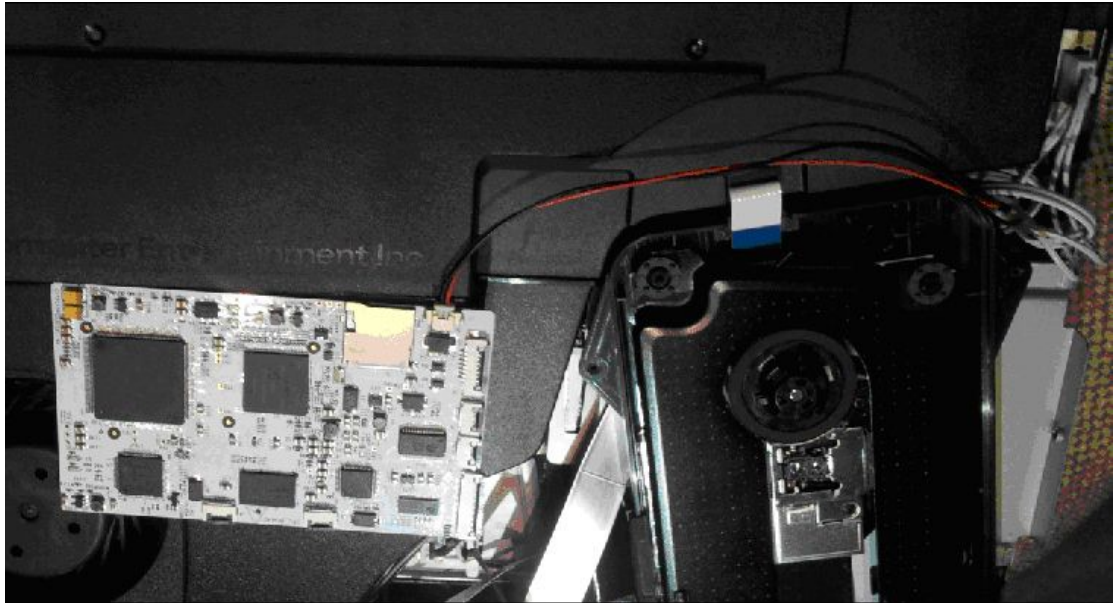


Disconnect the power cable between the console power supply and the console motherboard. Replace the cable with the correct type which has connector matching that of your console. Insert the 4 pin low profile connector to your E3 ODE PRO board connector marked power as shown here (note that the connector is top down press fit, not slide in) Kindly, note carefully the orientation and direction of the cable, failure to do so could cause damage or malfunction:

25xx/3xxx shown:



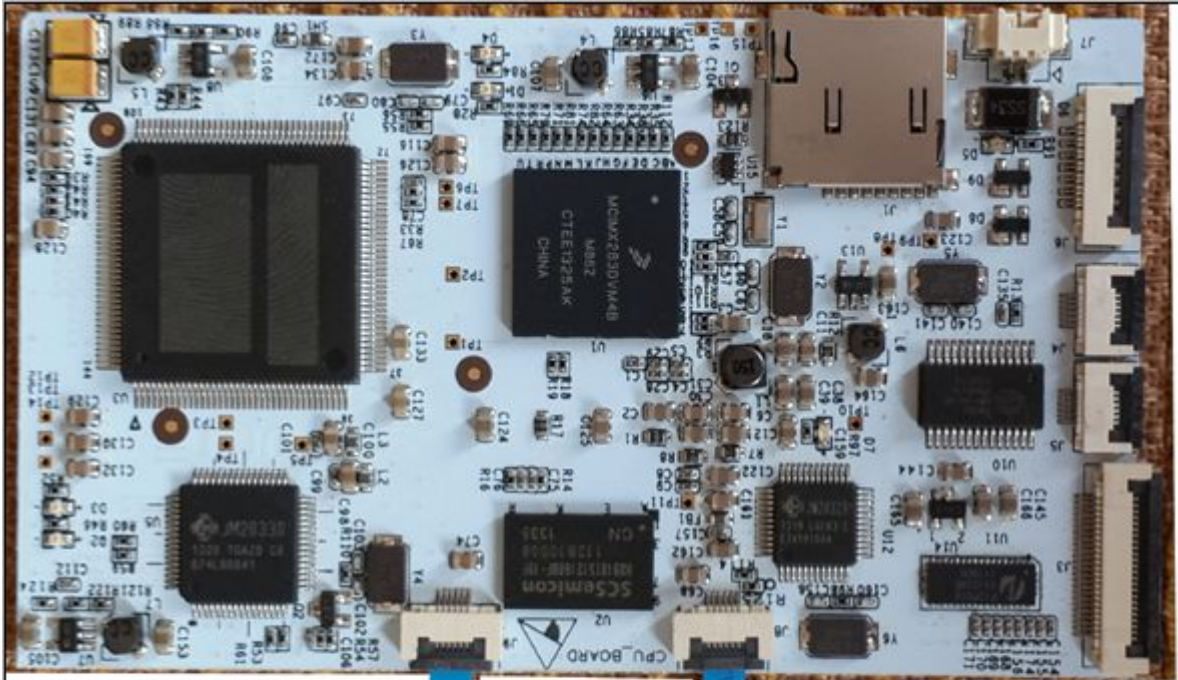
4xxx shown:



Disconnect the 6PIN eject cable between the console motherboard and the BD drive. Replace the cable with the correct type which has connector matching that of your console.

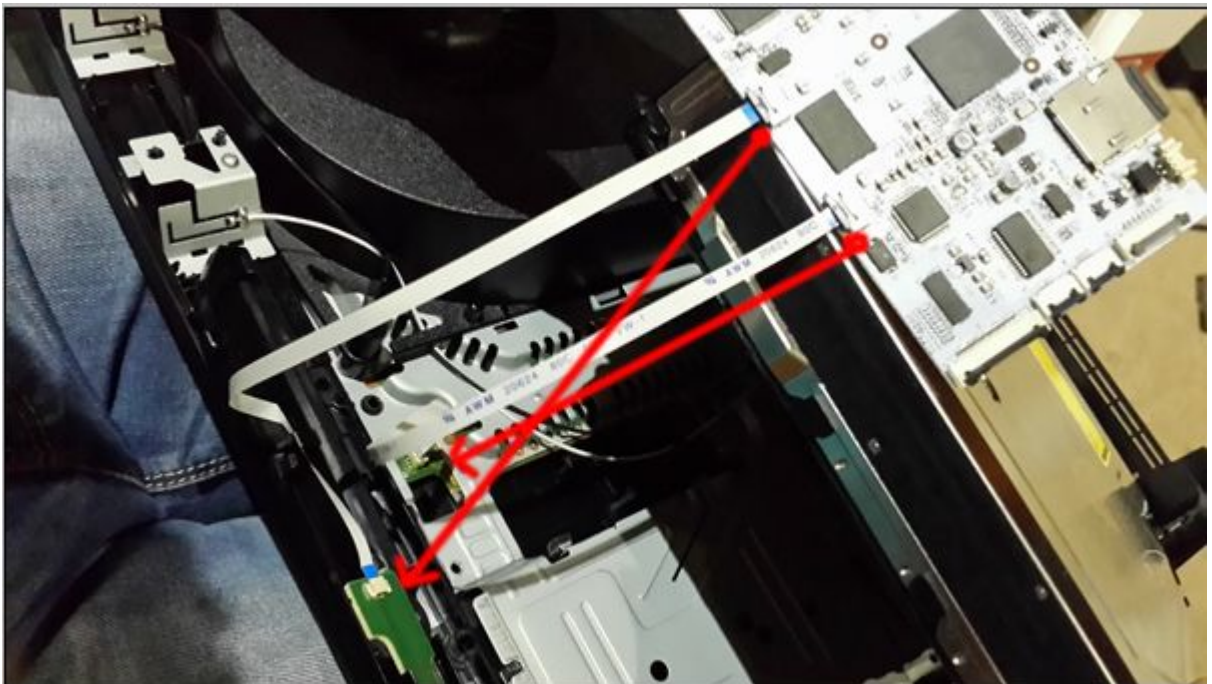
25xx/3xxx shown and install on console

Please note don't mix the text 6PIN cable and NO text 6PIN cable



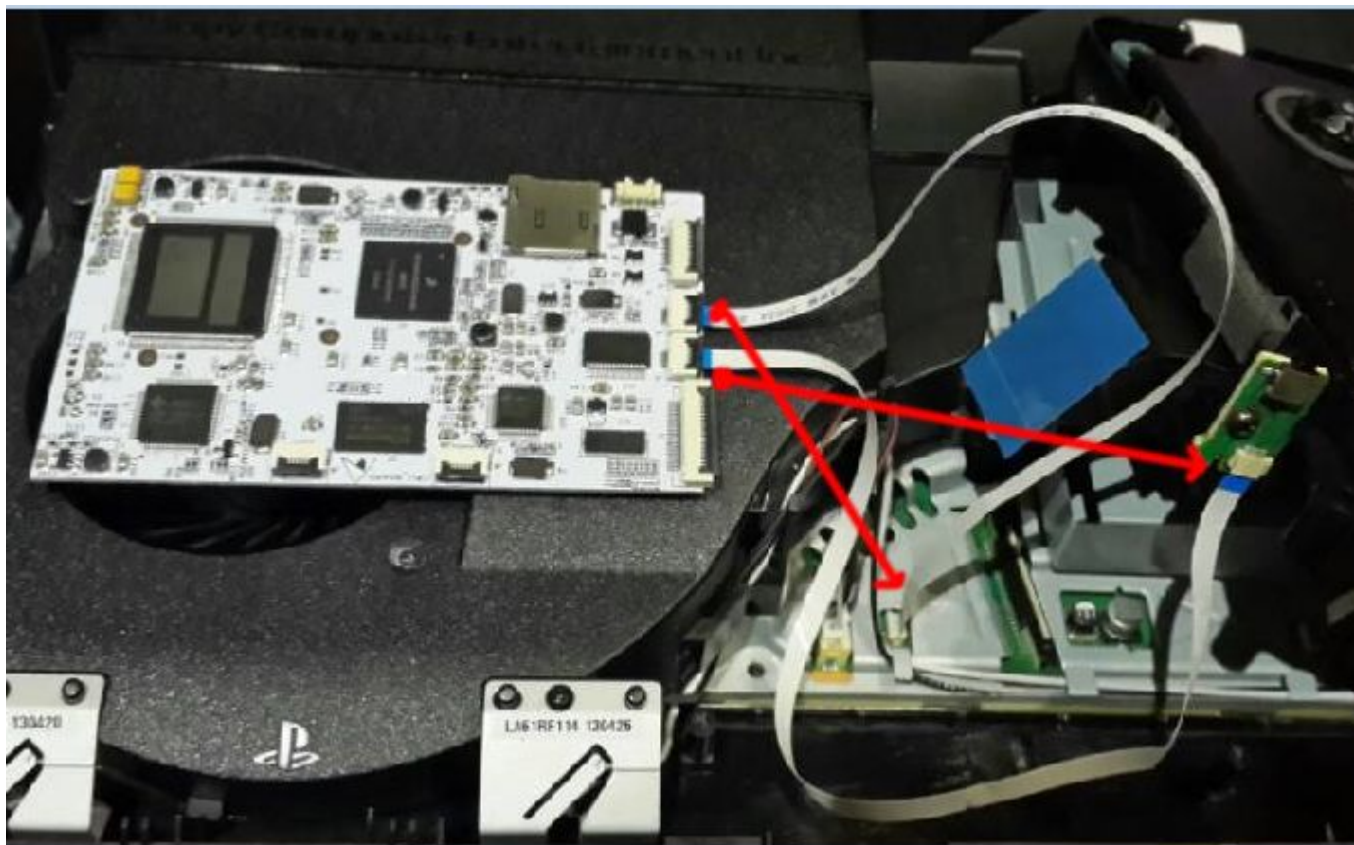
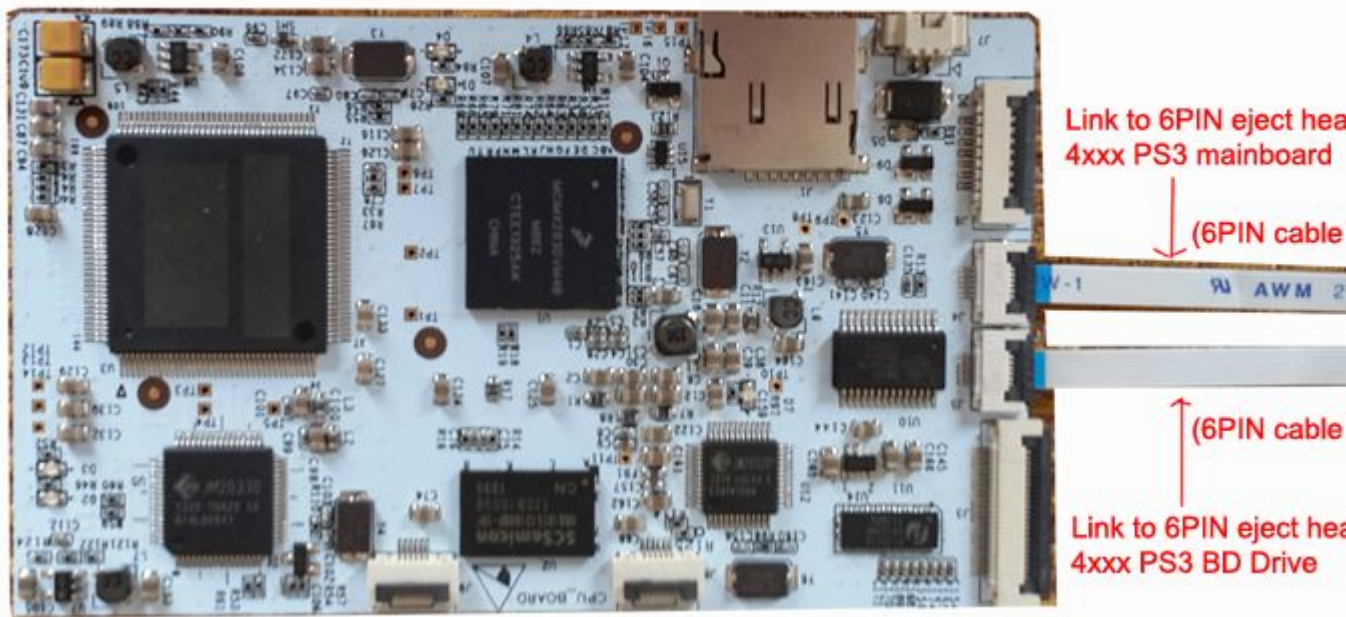
Link the No text 6PIN cable to 6PIN eject header on 3xxx PS3 BD Drive

Link the text 6PIN cable to 6PIN eject header on 3xxx PS3 motherboard



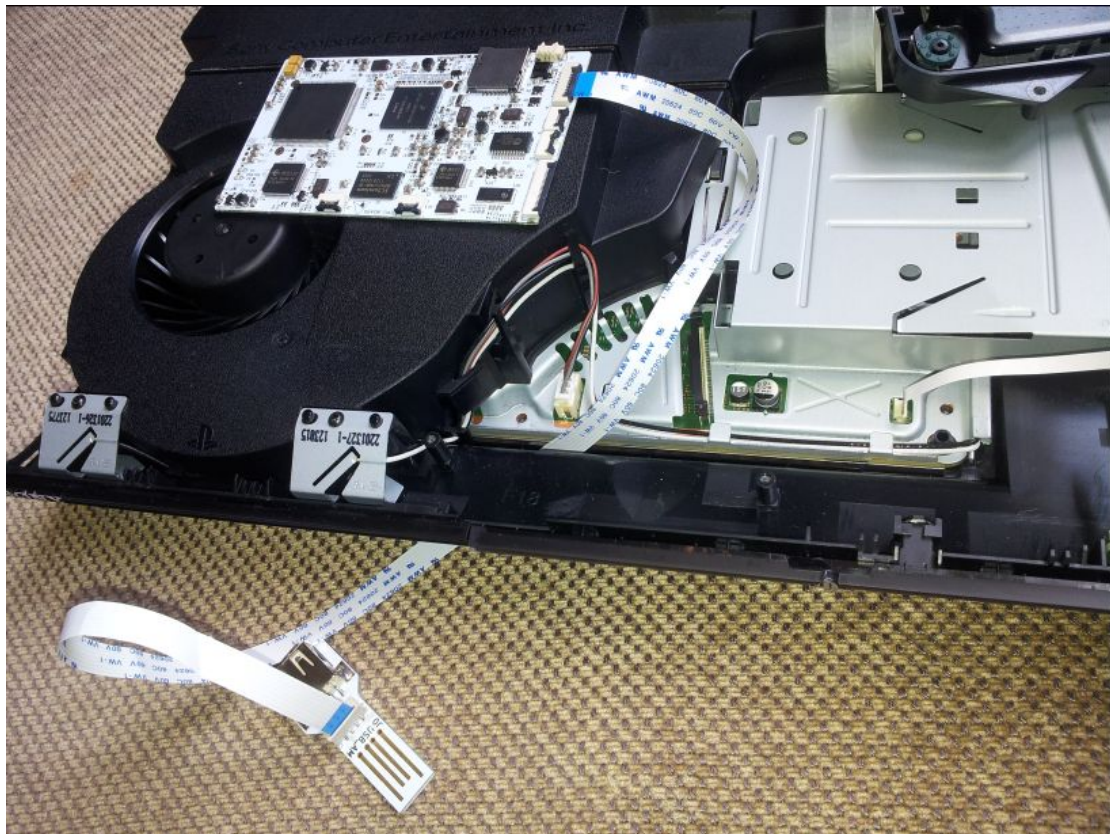
4xxxx shown and install on console

Please note don't mix the text 6PIN cable and NO text 6PIN cable



On other console which hasn't 6PIN connector like 25xx, user needn't connect those 6PIN cable.

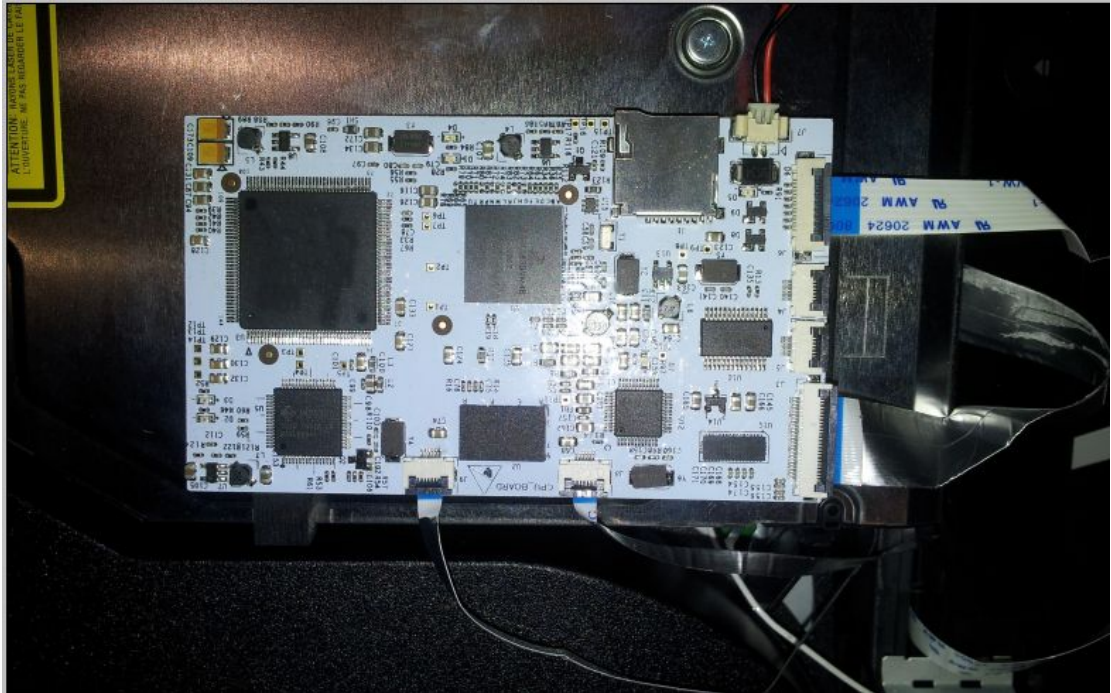
You can now connect the 7PIN FFC from E3 mainboard to E3 USB STICK



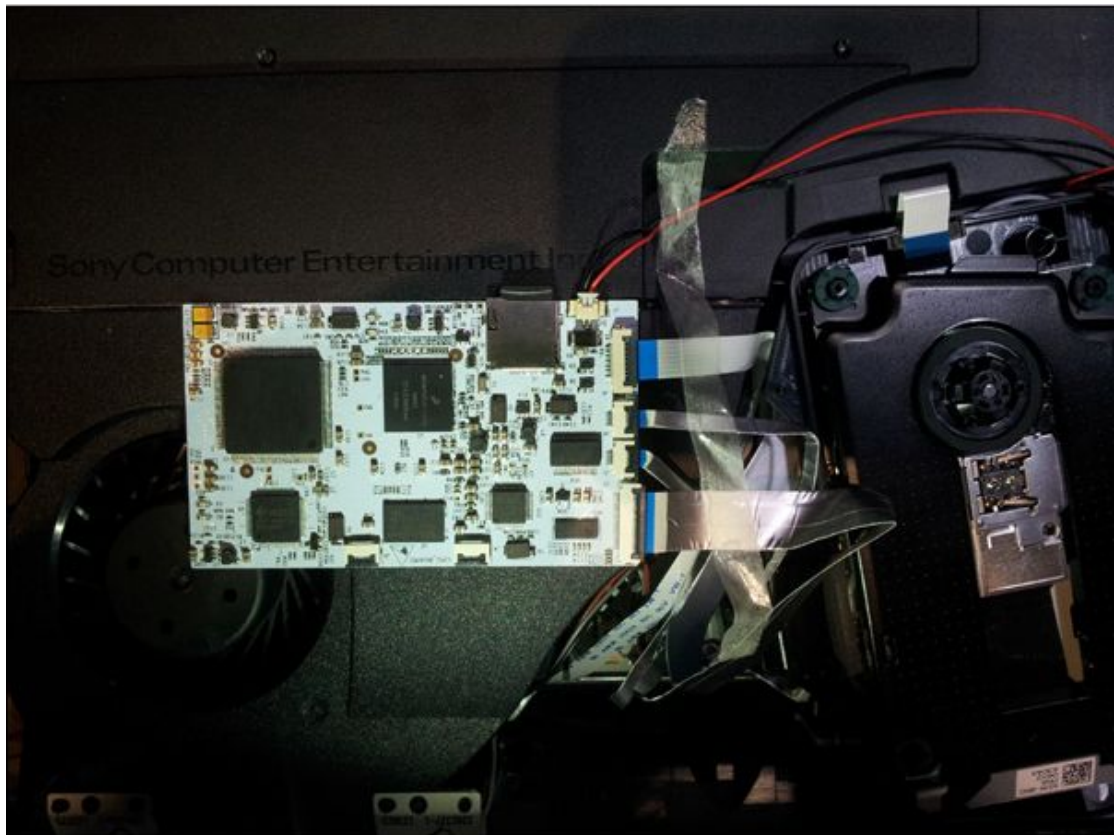


The E3 ODE PRO should be positioned inside the console as shown (CECH25XX/3XXX):

Please adhere the double sided adhesive E3 ODE PRO between metal casing of drive and bottom of E3 ODE PRO main board to act as an insulating shield.



The E3 ODE PRO should be positioned inside the console as shown (CECH4XXX):



You can now re-assemble your console and get ready to play games.