

65. PRINTED WIRING BOARDS

SSM-2010 SSM-2010

SSM-2010 SSM-2010

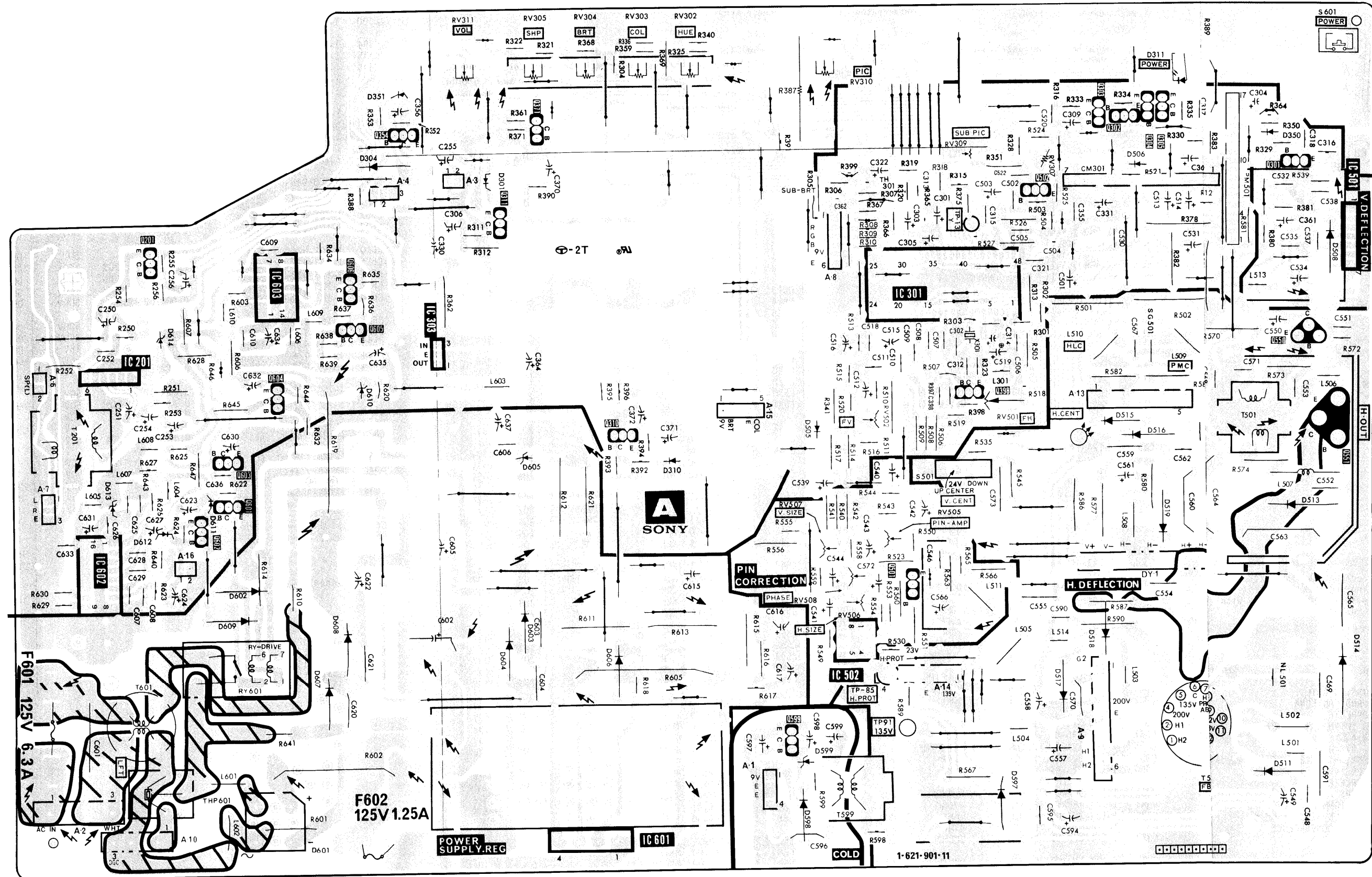
**A** [AF AMP, Y CHROMA JUNGLE, 9V REG, V OUT, PIN MOD, 135V REG, RELAY DRIVE/DET, H OUT]

**U** [VIDEO/AUDIO ISOLATION]

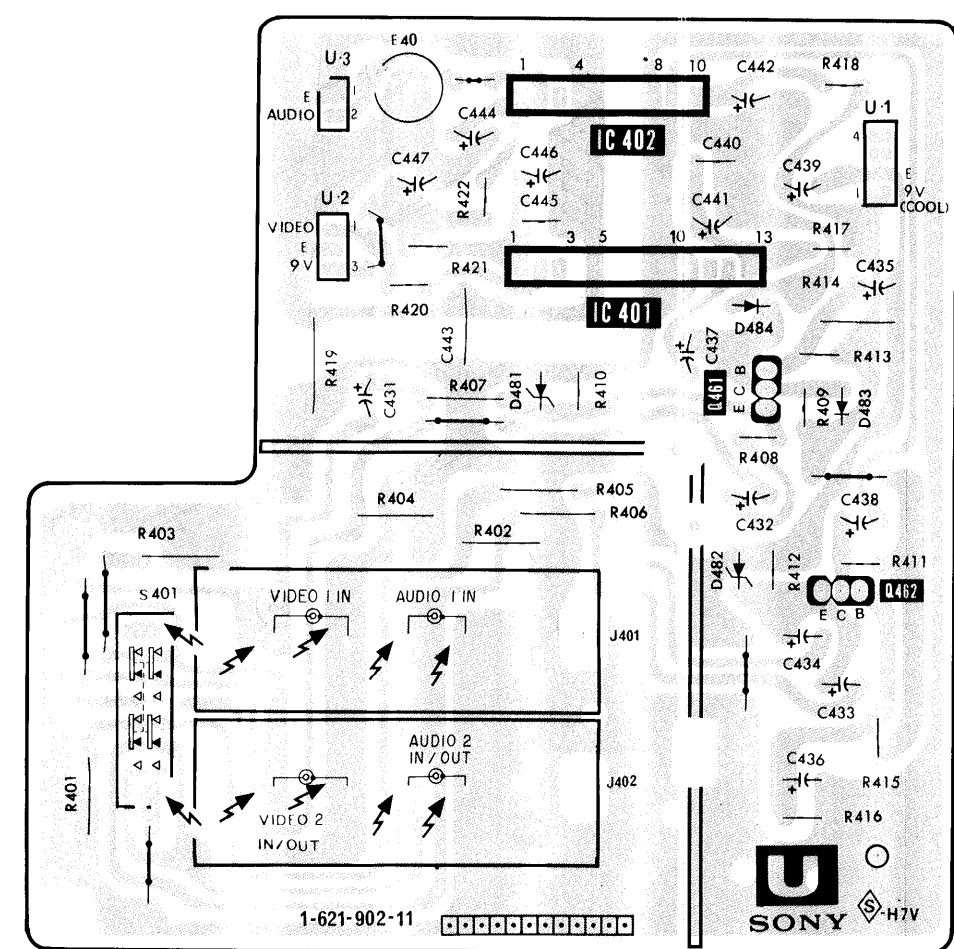
**C** [R. G. B OUT]

- A board -

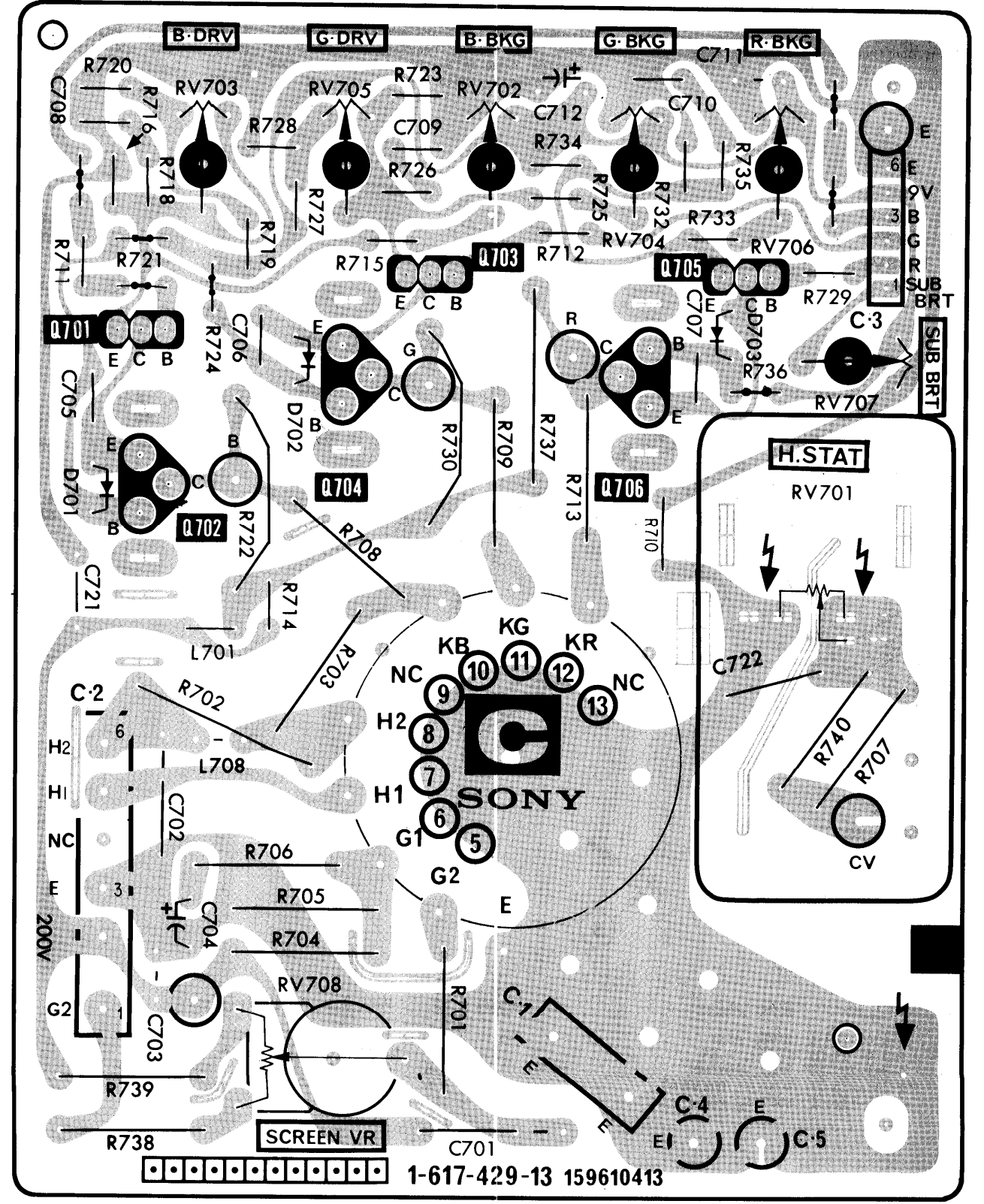
IC	Q	D	RV	TP
			311	
			305	
			304	
			303	
			302	
			310	
			351	311
			371	303
			302	350
			304	506
			301	301
			502	
			311	
			201	508
			603	301
			606	
			605	614
			303	550
			201	604
			604	610
			398	515
			310	505
			603	516
			310	310
			601	611
			613	513
			602	612
			602	505
			602	507
			501	508
			602	506
			609	603
			608	518
			604	604
			606	514
			607	
			599	517
			599	
			511	599
			598	597
			601	601



- U board -



- C board -



SECTION 7 EXPLODED VIEWS

NOTE:
Items with no part number and no description are not stocked because they are seldom required for routine service.
The construction parts of an assembled part are indicated with a collation number in the remark column.

7-1. BEZEL
TA, BV4 x 14 7-685-662-79

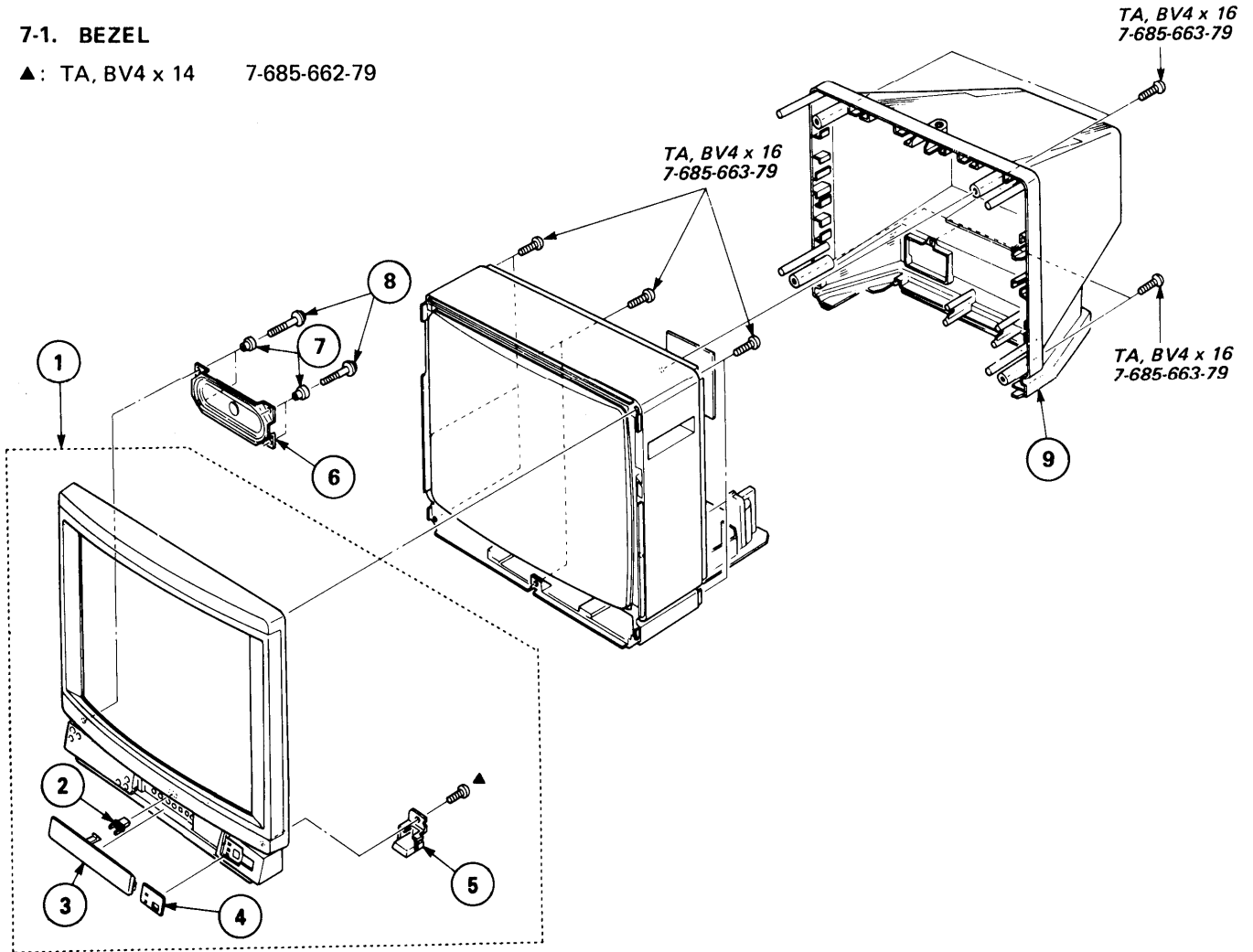
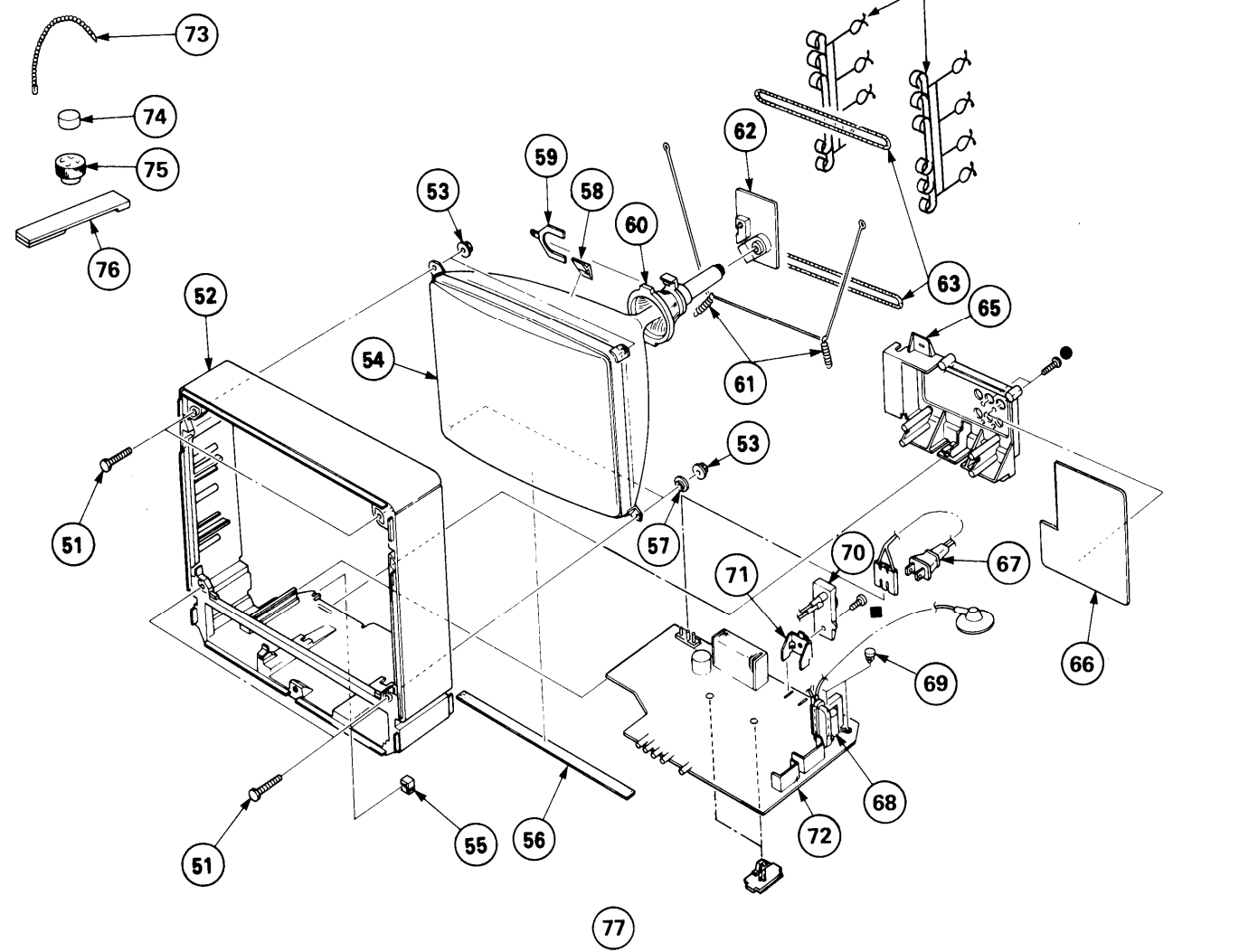


Table listing parts for section 7-1: No., Part No., Description, Remark. Includes items like bezel Assy, cushion, speaker, and window ornament.

7-2. PICTURE TUBE

TA, BV3 x 8 7-685-646-79
TA, BV3 x 12 7-685-648-79

The components identified by shading and mark A are critical for safety. Replace only with part number specified.



The components identified by shading and mark A are critical for safety. Replace only with part number specified.

Table listing parts for section 7-2: No., Part No., Description, Remark. Includes items like bolt, cabinet, flange nut, picture tube, holder, cloth, washer, spacer, magnet, deflection yoke, spring, C board, and coil.

SECTION 8 ELECTRICAL PARTS LIST

A

NOTE:

The components identified by shading and mark A are critical for safety. Replace only with part number specified.

Items marked "\*" are not stocked since they are seldom required for routine service. Some delay should be anticipated when ordering these items.

When indicating parts by reference number, please include the board name.

RESISTORS
All resistors are in ohms
F: nonflammable
COILS
MMH: mH, UH: uH

The components identified by A in this manual have been carefully factory-selected for each set in order to satisfy regulations regarding X-ray radiation. Should replacement be required, replace only with the value originally used.

Main electrical parts list table with columns for Ref.No., Part No., Description, Remark, and Remarks.

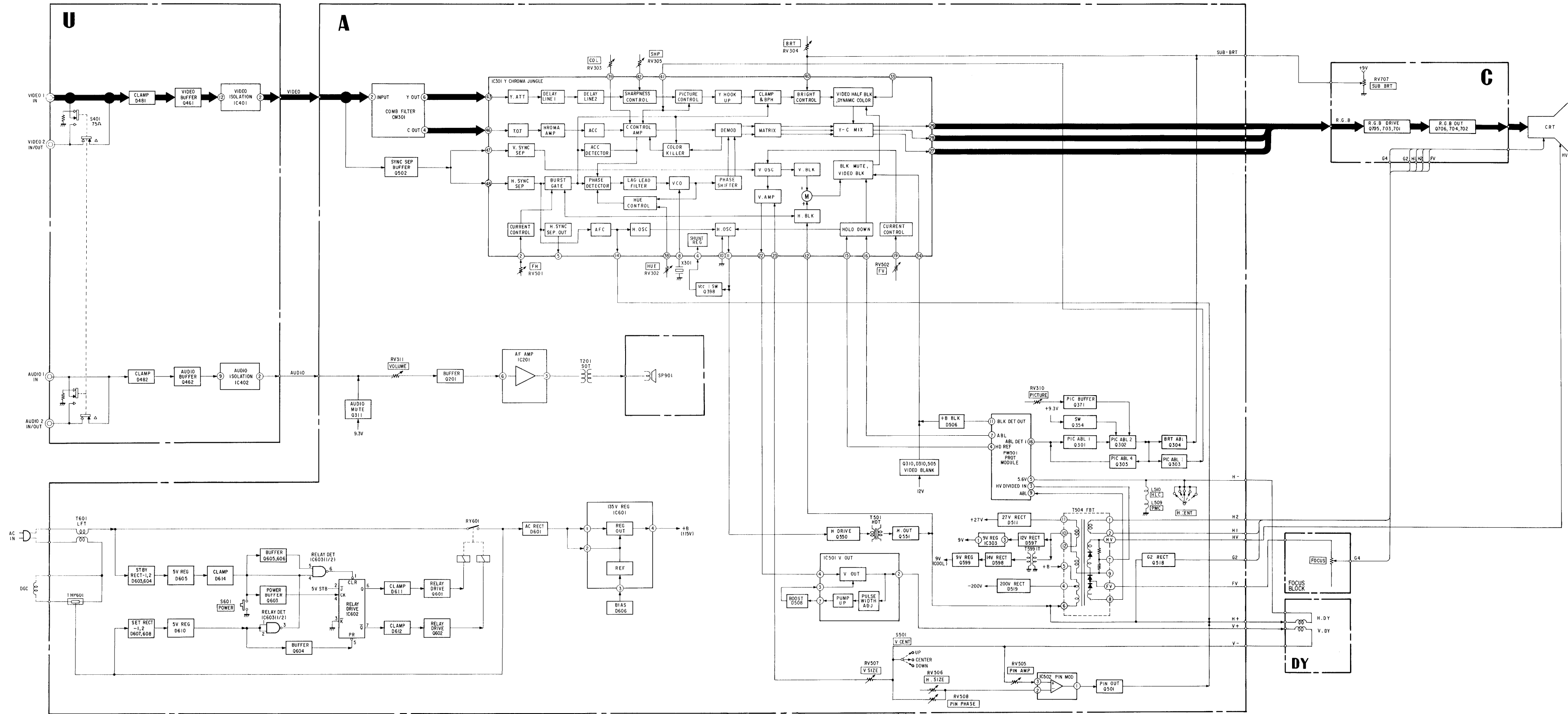
A

Continuation of electrical parts list table with columns for Ref.No., Part No., Description, Remark, and Remarks.

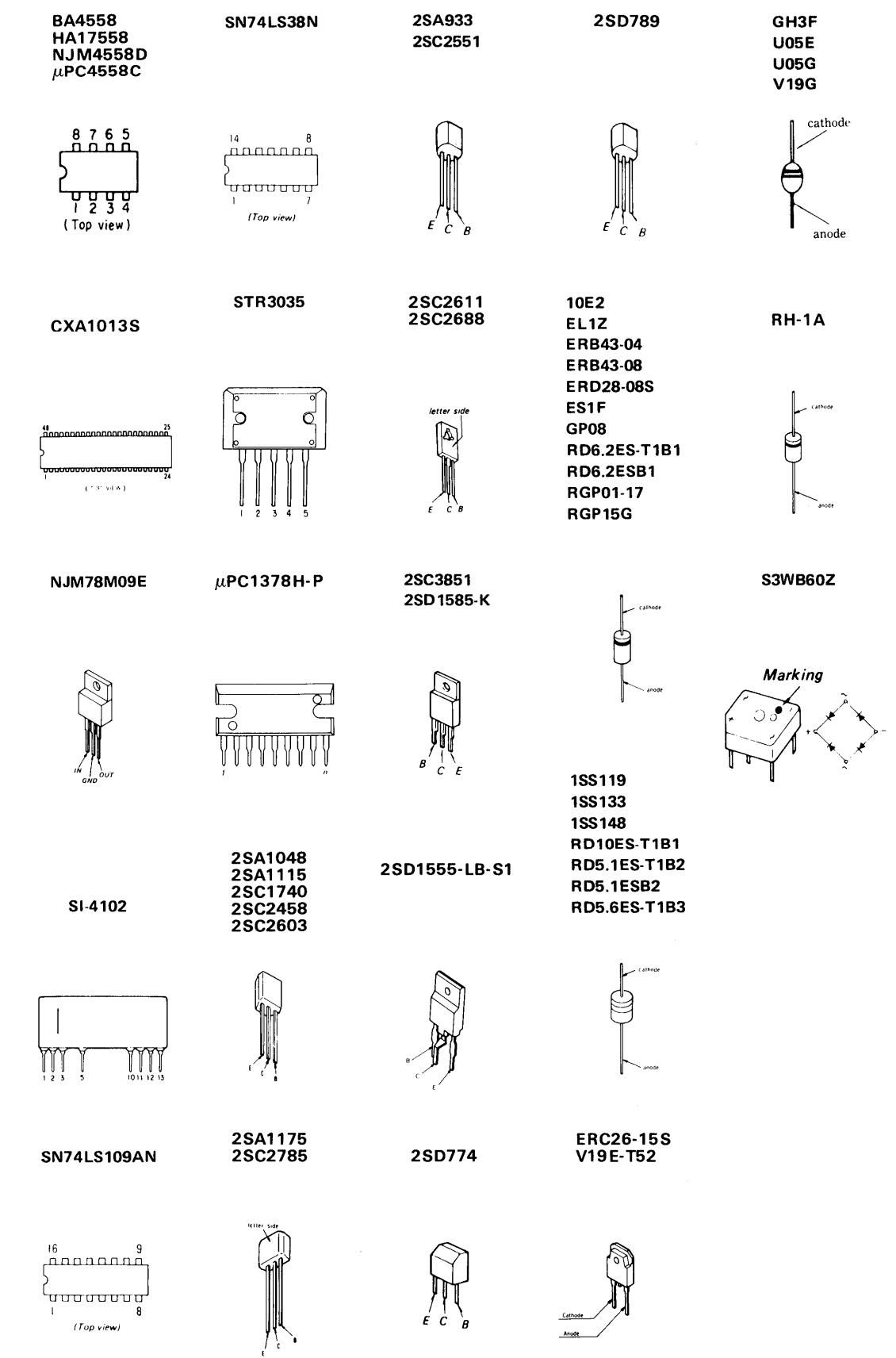
The components identified by shading and mark A are critical for safety. Replace only with part number specified.



6-2. BLOCK DIAGRAM



6-3. SEMICONDUCTORS



6-4. SCHEMATIC DIAGRAMS

**Note:** The components identified by shading and mark are critical for safety. Replace only with part number specified.

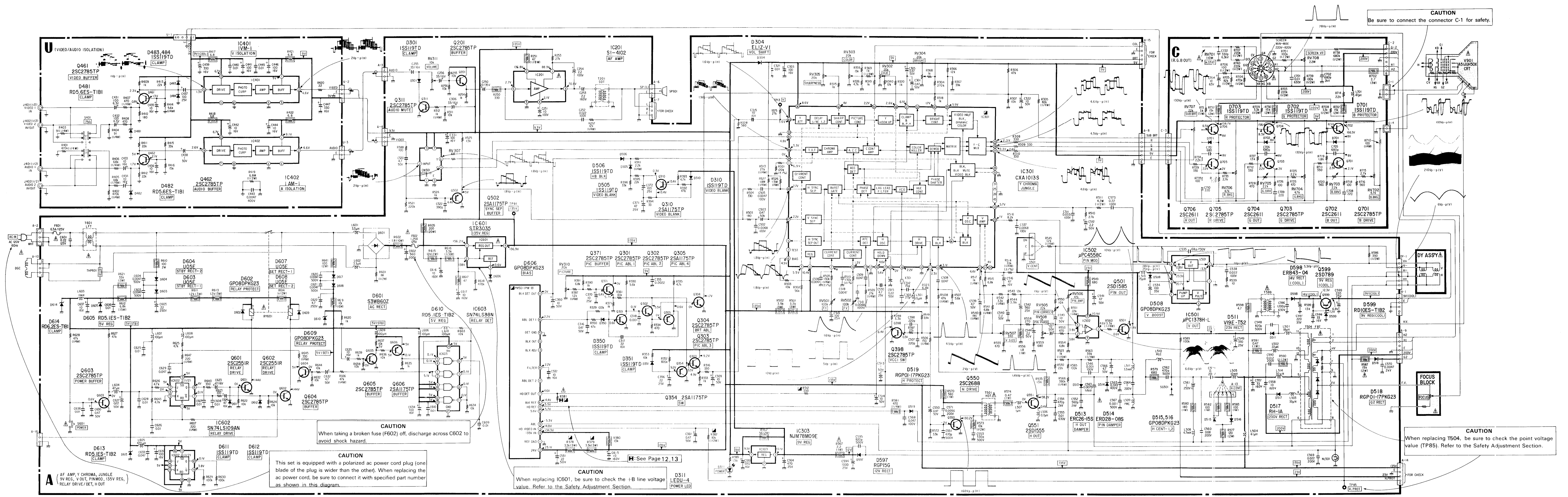
**Note:**

- All capacitors are in μF unless otherwise noted. p : μF 50V or less are not indicated except for electrolytics.
- All resistors are in ohms, 1/6W unless otherwise noted. kΩ = 1000Ω, MΩ = 1000kΩ
- : nonflammable resistor.
- : fusible resistor.
- △ : internal component.
- : panel designation.
- All variable and adjustable resistors have characteristic curve B, unless otherwise noted.
- The components identified by in this manual have been carefully factory-selected for each set in order to satisfy regulations regarding X-ray radiation. Should replacement be required, replace only with the value originally used.
- When replacing components identified by mark the necessary adjustments indicated. If results do not meet the specified value, change the component identified by and repeat the adjustment until the specified value is achieved. (Refer to R381 adjustment on Page 12, 13) When replacing the part in below table, be sure to perform the related adjustment.

Part replaced (  )	Adjustment (  )
IC301, PM501, R512, R381, R382, R378, R379	HOLD DOWN VOLTAGE R381

- Voltages are dc with respect to ground unless otherwise noted.
- Readings are taken with a 10MΩ digital multimeter.
- Reading are taken with a color-bar signal to VIDEO 1 IN.
- — : B + bus.
- Voltage variations may be noted due to normal production tolerances.
- : adjustment for repair.
- ✕ : Can not be measured.

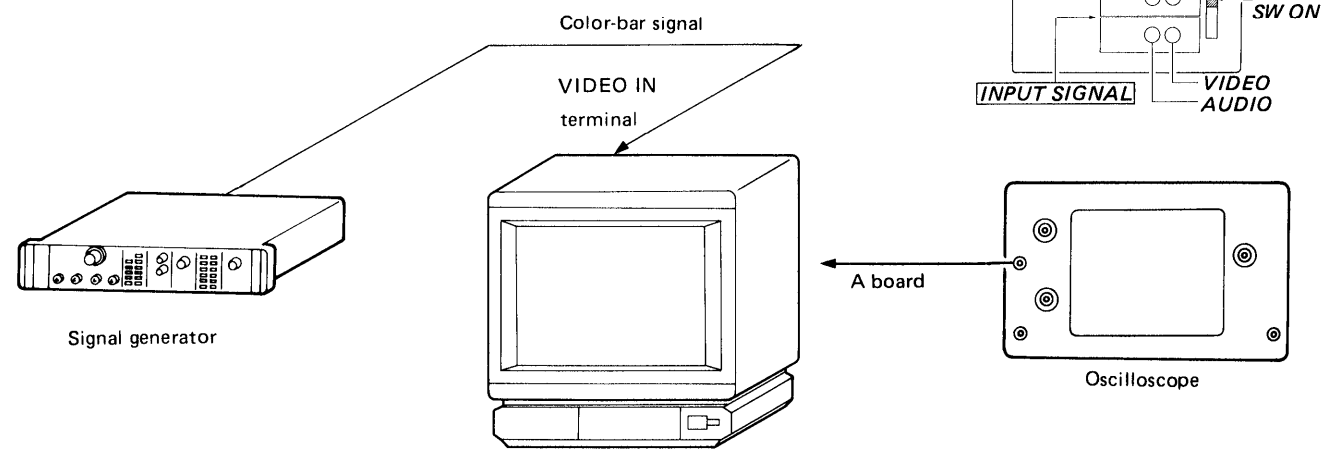
A  
B  
C  
D  
E  
F  
G  
H  
I  
J



### SECTION 5 CIRCUIT ADJUSTMENTS

#### 5-1. A BOARD ADJUSTMENTS

##### • CONNECTION



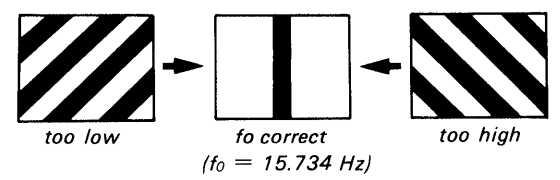
##### 5-1-1. V.SIZE, V.CENT Adjustment

1. Adjust RV507 (V.SIZE) so that V.SIZE is best.
2. Adjust S501 (V.CENT) so that vertical position is center.

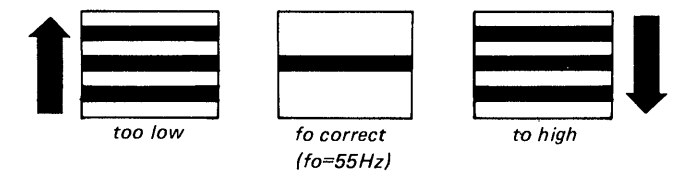
6. After adjustment, remove the connectin in step 4 .

##### 5-1-2. FH, FV Adjustment

1. Input a color bar signal and short between IC301 pins 48 and 38.
2. Adjust F.H VR (RV501) so that picture flow is as shown in Figure.
3. After adjustment, remove the connections in step 1 .



4. Short the circuit IC301 pins 47 and 36.
5. Adjust F.V VR (RV502) so that picture flow is as shown in figure.



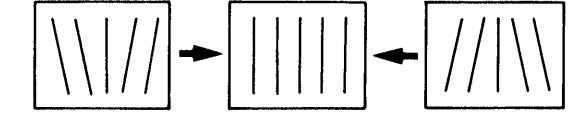
##### 5-1-3. Horizontal Position Adjustment

1. Check that H center moves to the right and left with horizontal position connector (A-13), then adjust horizontal position to center.

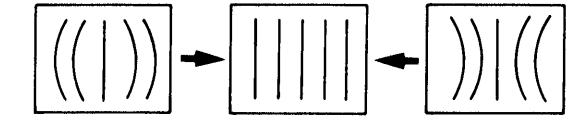
##### 5-1-4. Picture Distortion Adjustment

1. Picture distortion adjustment  
Input a signal equivalent to a crosshatch signal.

##### • PIN PHASE (RV508)

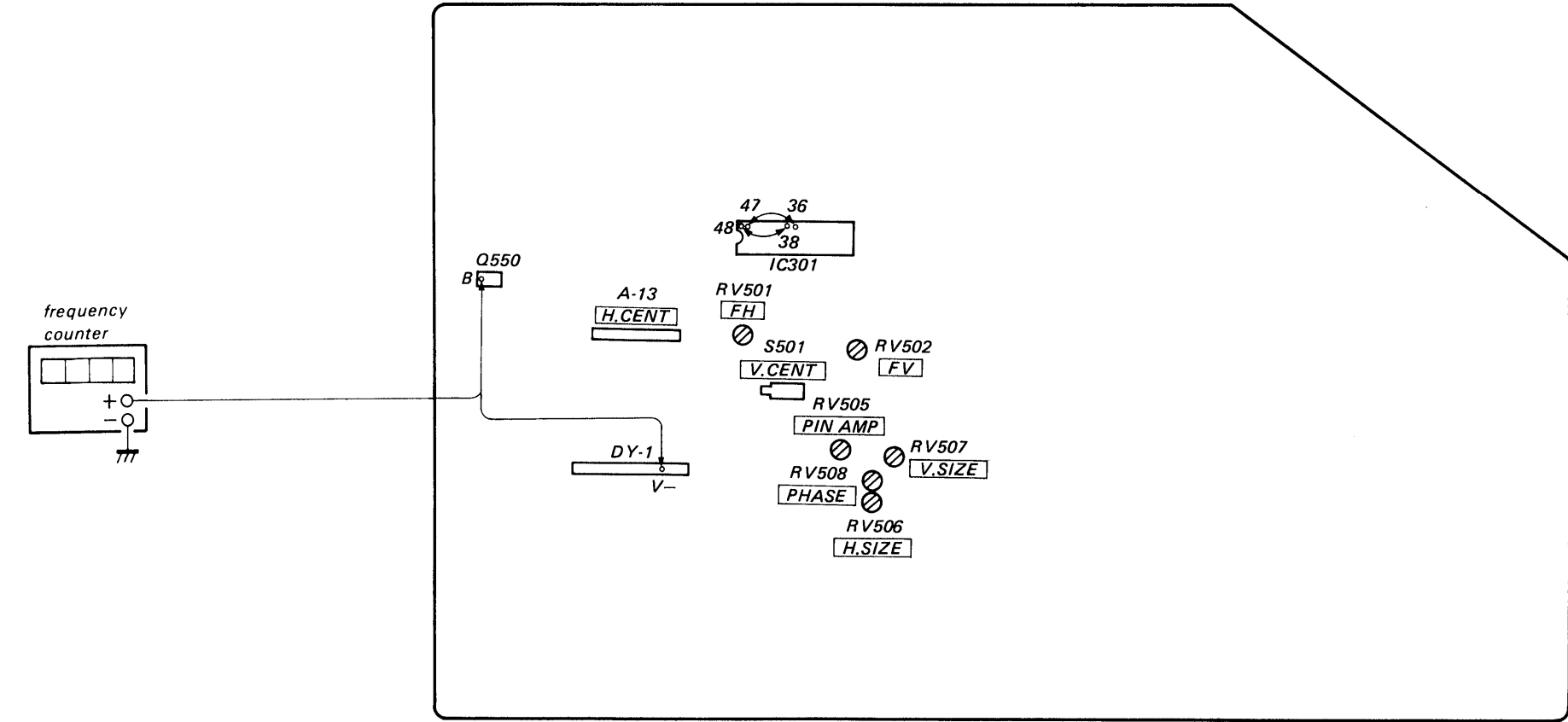


##### • PIN AMP (RV505)



2. Adjust RV506 (H.SIZE) so that H.SIZE is best.
3. Adjust connector (A-13) so that horizontal position is center.

#### A board



### SECTION 6 DIAGRAMS

#### 6-1. CIRCUIT BOARDS LOCATION

