



INSTALLATION MANUAL for XBOX Version 1.0-1.5 solder-installation

YOUR SmartXX v3: What you need to know first

Read this page carefully before starting work!

Power Input (J7)

- red:** 5V + (DC)
- black:** GND (Ground)

IR Remote Output Port (J5)

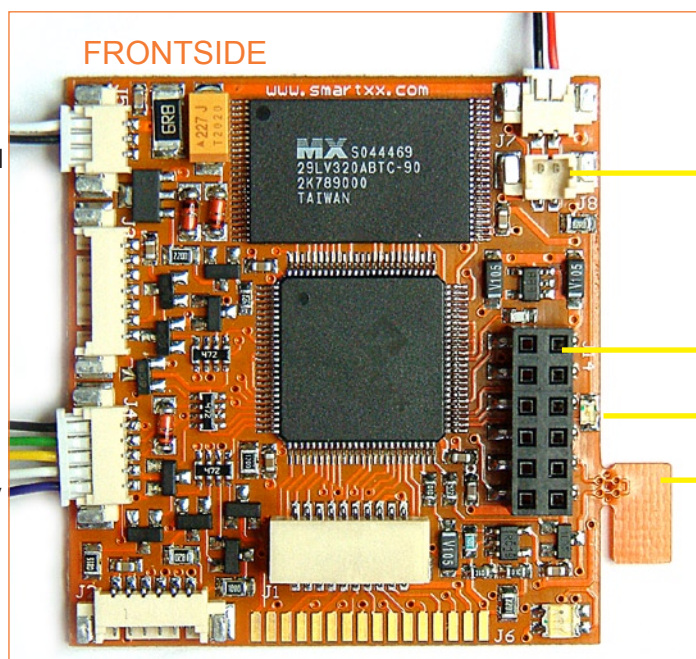
- white:** buffered positive signal
- black:** GND (Ground)

System Connections (J4)

- black:** GND (Ground)
- green:** Emergency Recovery
- yellow:** Eject Cable
- white:** LFRAME
- purple:** D0

Emergency Recovery

If there has occurred an error while updating the SmartXX-OS (e.g. power break), and the SmartXX v3 doesn't boot up any more, you can activate the backup-OS (which will allow you to flash the OS again) by connecting the two pads on the backside OR connecting the green wire from J4 to GND (Ground), black wire on J4, during bootup.



Power-Output (J8)

- red:** 5V + (DC)
- black:** GND (Ground)

LPC Bus Connector (J14)

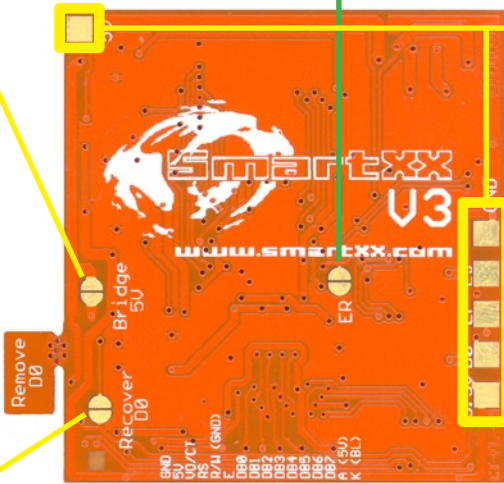
Status-LED

D0-Fan
break away to remove D0-signal on LPC Bus Connector Pin4.
Break away unless you are told the opposite in the manual!

5V Bridge

Can replace power-cable in XBOX V1.0-1.5 if 5V + is available on LPC Bus Connector. Only in this case both pads can be soldered together.
USE OF THE DISTRIBUTED CABLE IS RECOMMENDED!!!

BACKSIDE



Do not work on these pads unless you know exactly what you are doing!!!

D0-Recovery pads

If D0-Fan has been removed, and you need its function back, it can be recovered by soldering the D0-recovery pads.

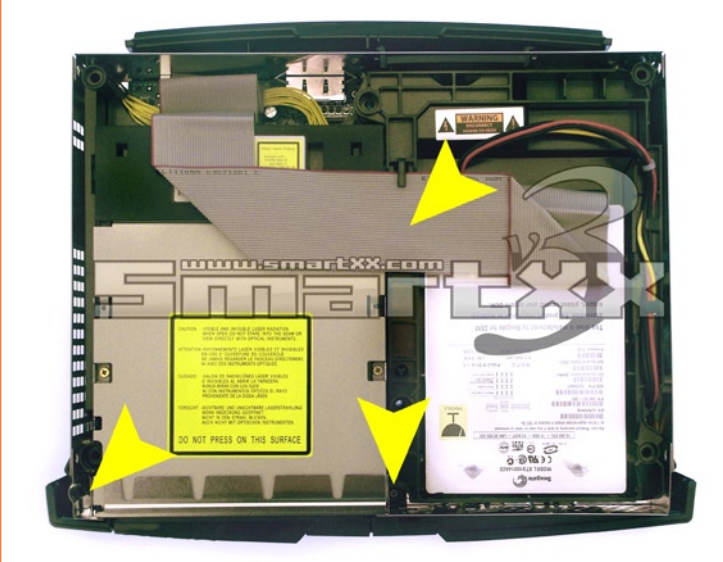


INSTALLATION MANUAL for XBOX Version 1.0-1.5 solder-installation

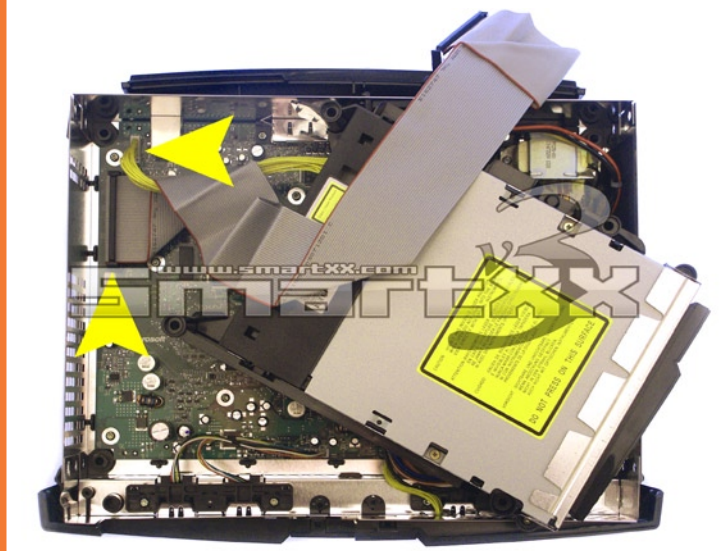


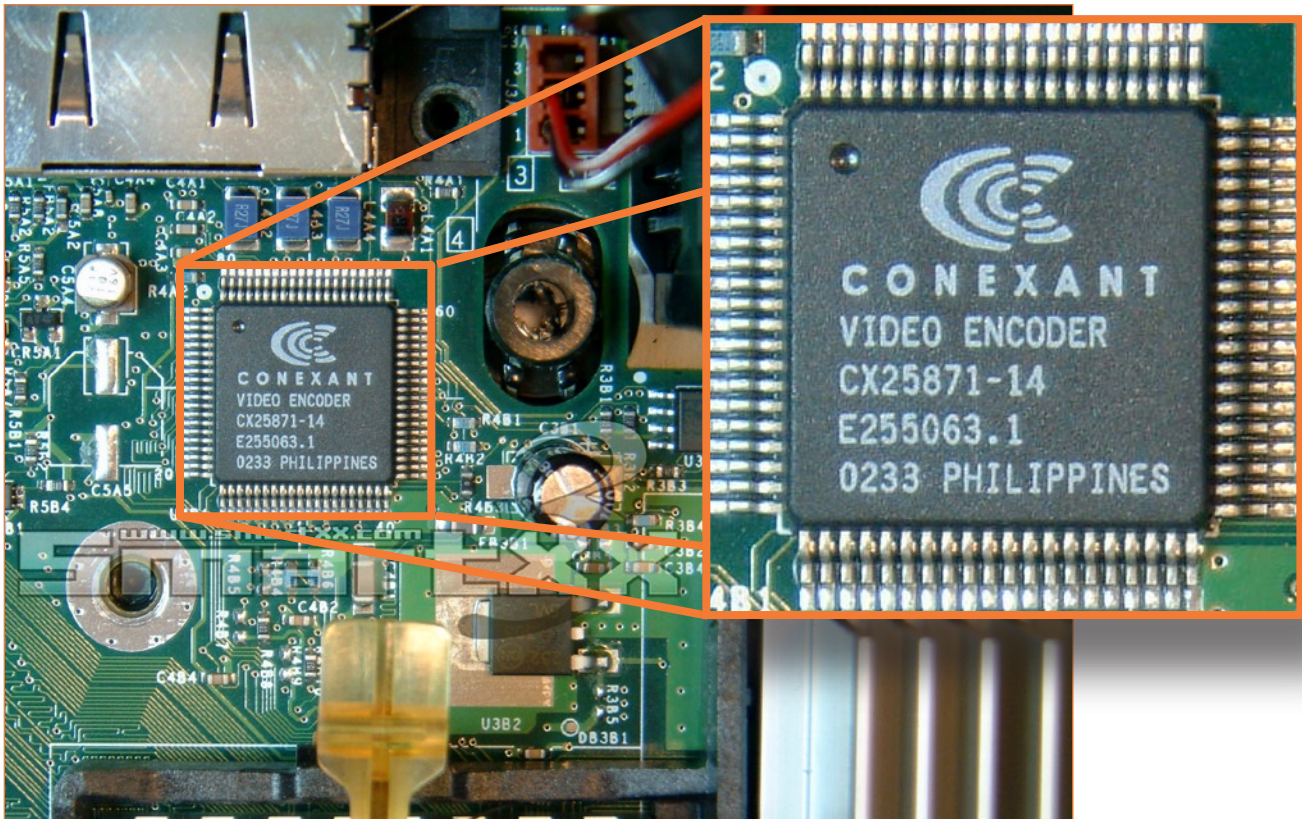
STEP 1: OPEN / PREPARE YOUR XBOX

1. Free the 6 screws that hold together the two parts of the XBOX-chassis on the bottom-side of your XBOX and unscrew them.
2. Disconnect the Databable and Powercable from the Harddrive and remove the three screws that attach the Harddrive- and the DVD-ROM-carriers to the XBOX.



3. Carefully take out the two carriers with the drives (HDD first). Disconnect the two cable assemblies from the DVD-Drive to the XBOX Mainboard as well.
4. Now you should have an empty XBOX like on the picture in front of you. Check the bordered chip to be certain that this manual is the right one for your XBOX (next p.).

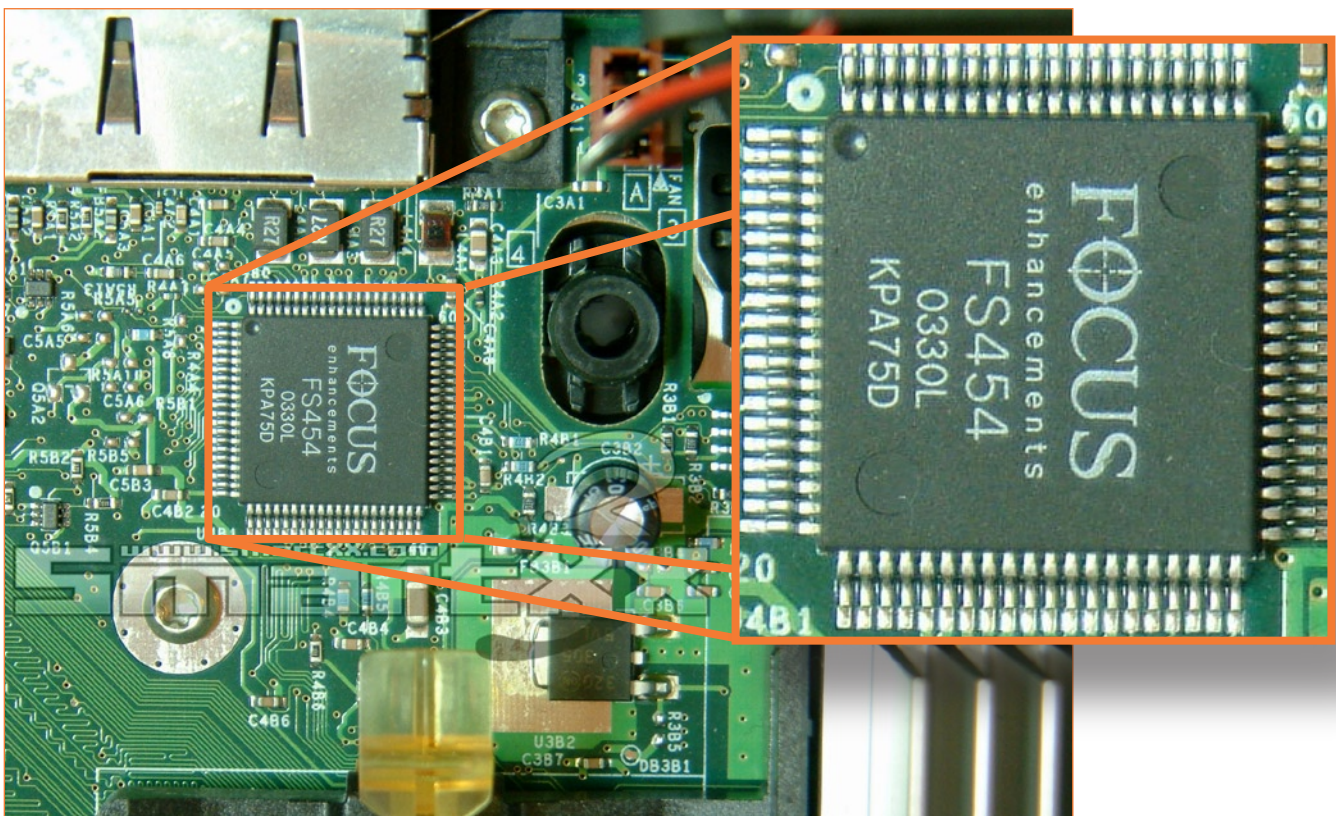




5. If the chip in your XBOX doesn't match one of the pictures (CONEXANT OR FOCUS marked on it):

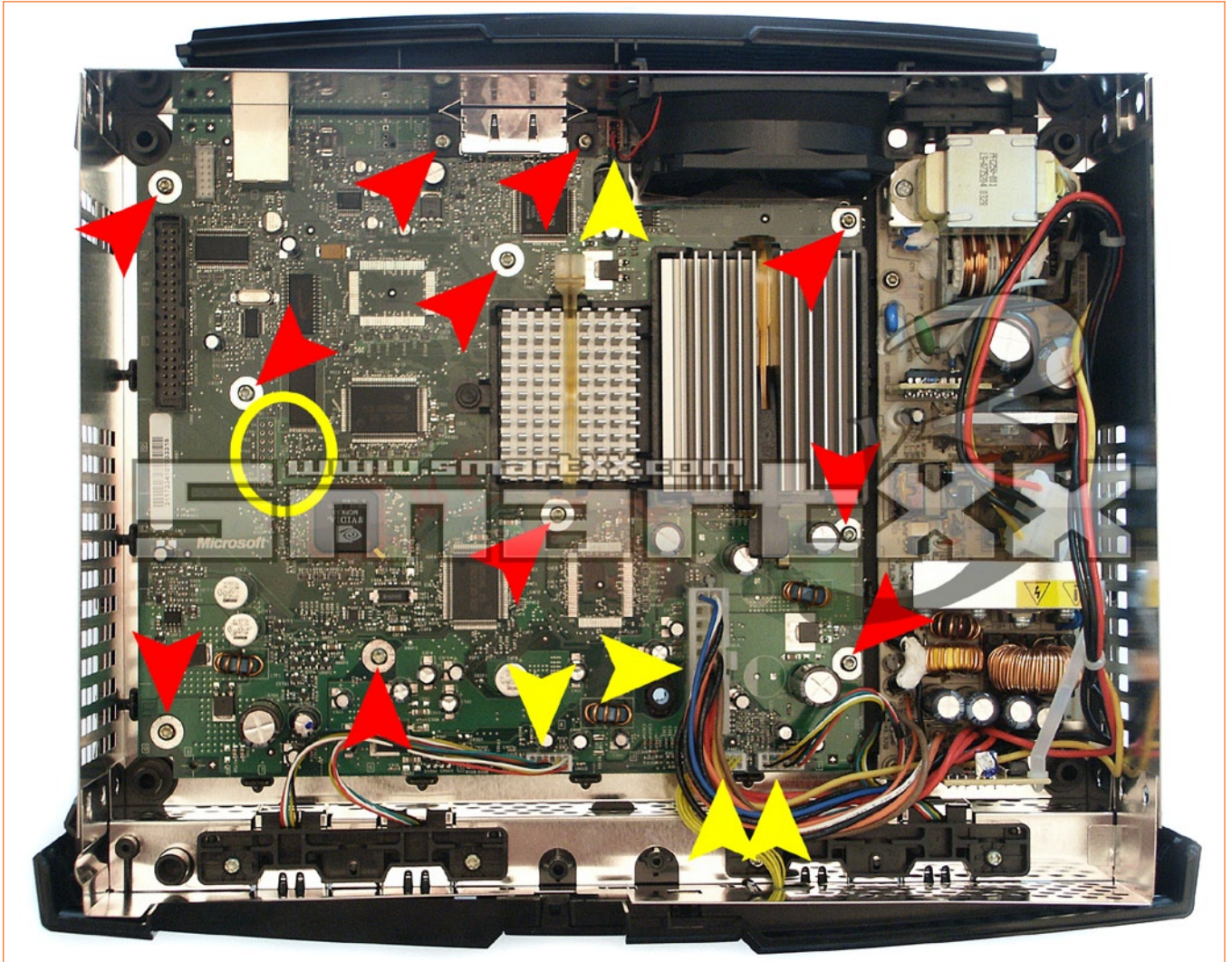
DON'T FOLLOW THIS MANUAL ANY FURTHER!

Use the „SmartXX v3 Installation Manual for Microsoft XBOX (Version 1.6)“ instead if XCALIBUR is marked on it. Else, go on...



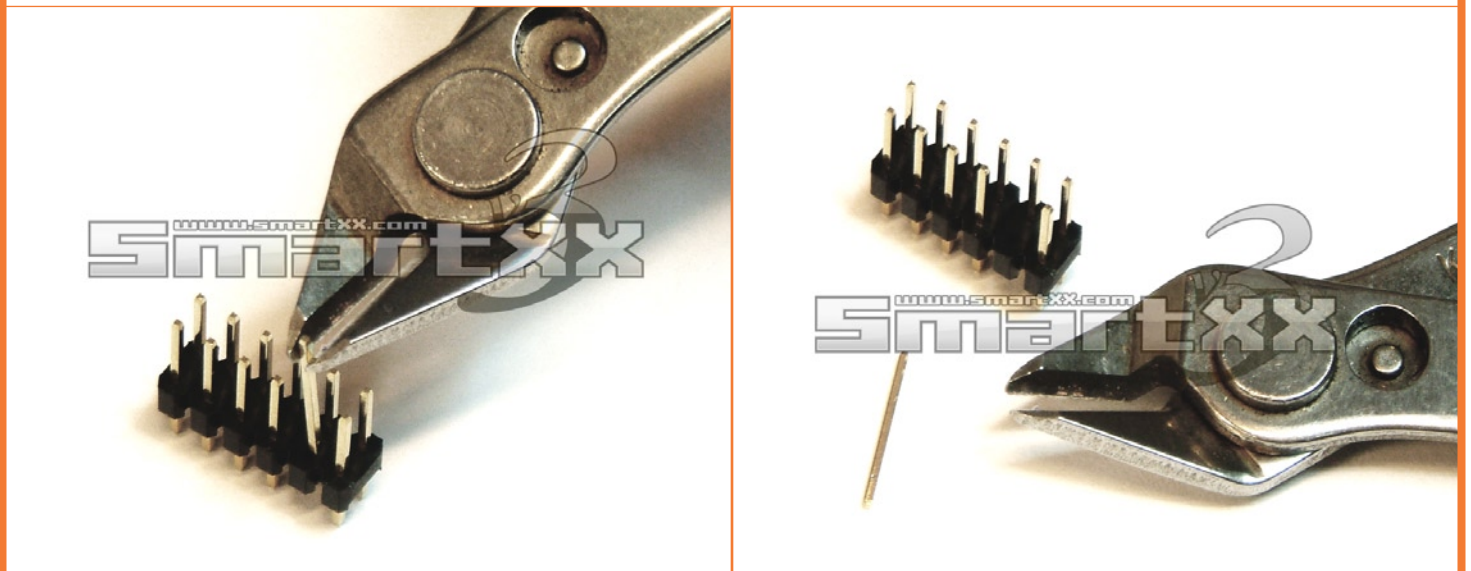
STEP 2: WORKING ON THE MAINBOARD

6. Remove the screws that attach the Mainboard to the chassis (orange markers) and any connected cables (green markers). Then take the Mainboard out carefully.

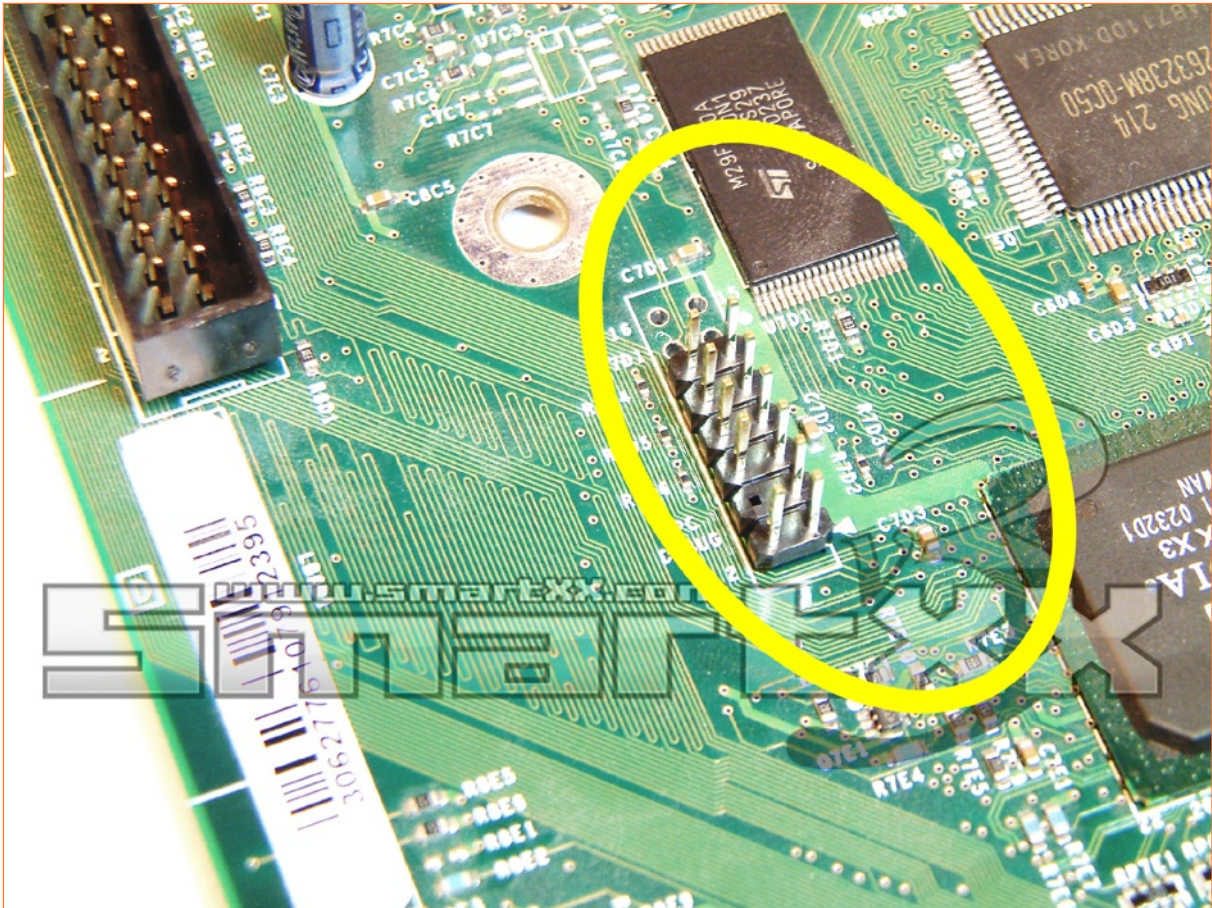


7. Remove the pin shown on the left picture from the distributed Pinheader (simply pull it out).

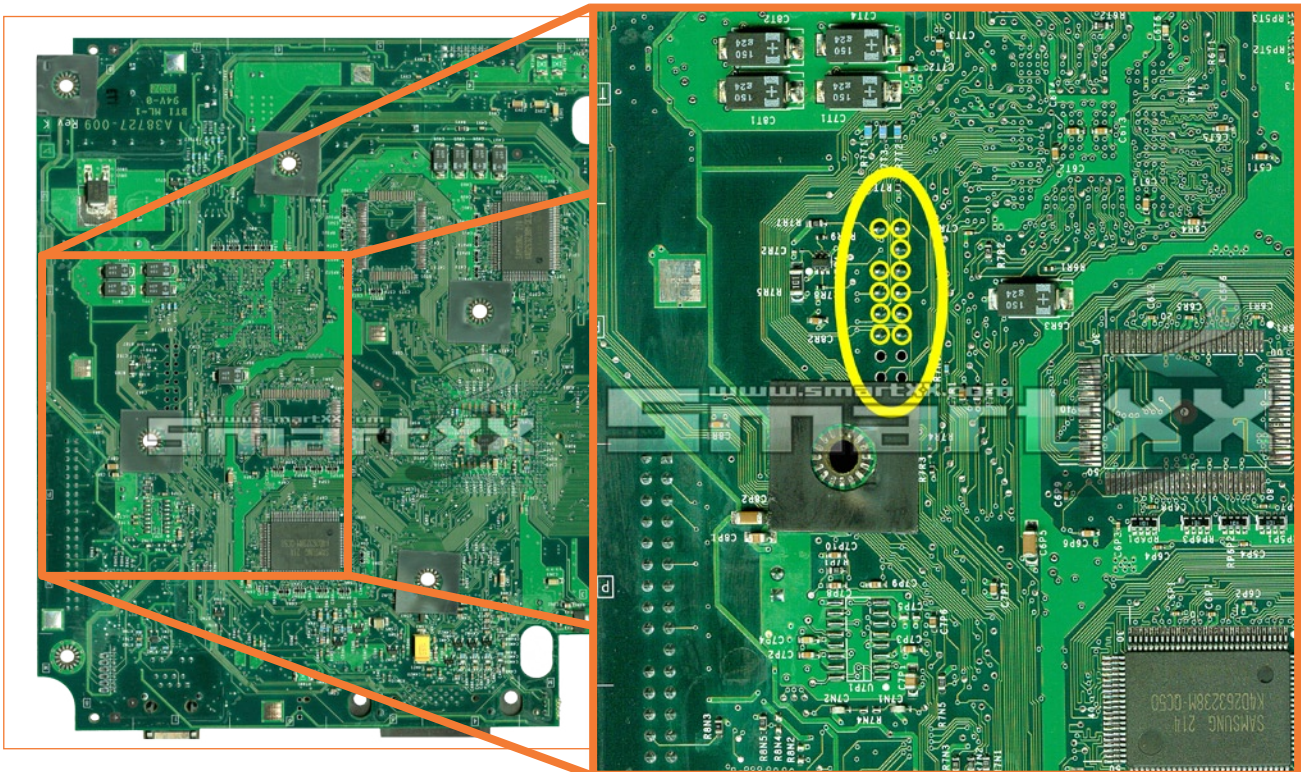
! BE CAREFULL AND REMOVE THE RIGHT ONE !



8. Place the modified Pinheader in the therefor designed holes on the XBOX Mainboard.
The shorter Pins into the board.

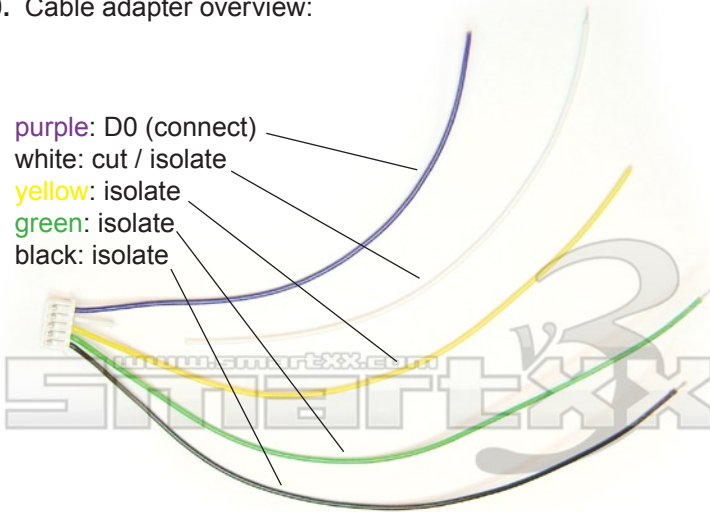


9. Turn the Mainboard upside down to access your working-area.
Properly solder the Pinheader to the Mainboard.

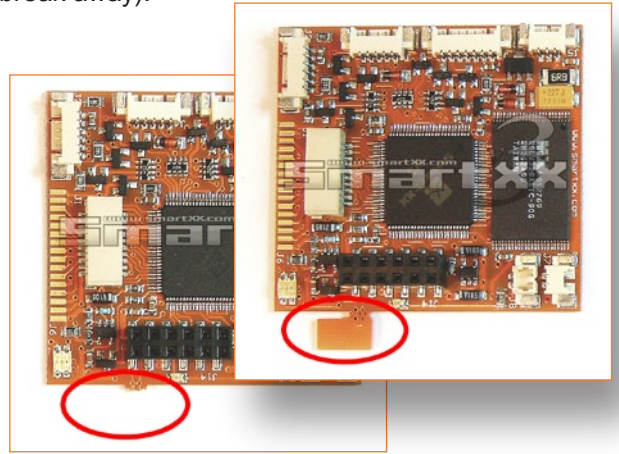


10. Cable adapter overview:

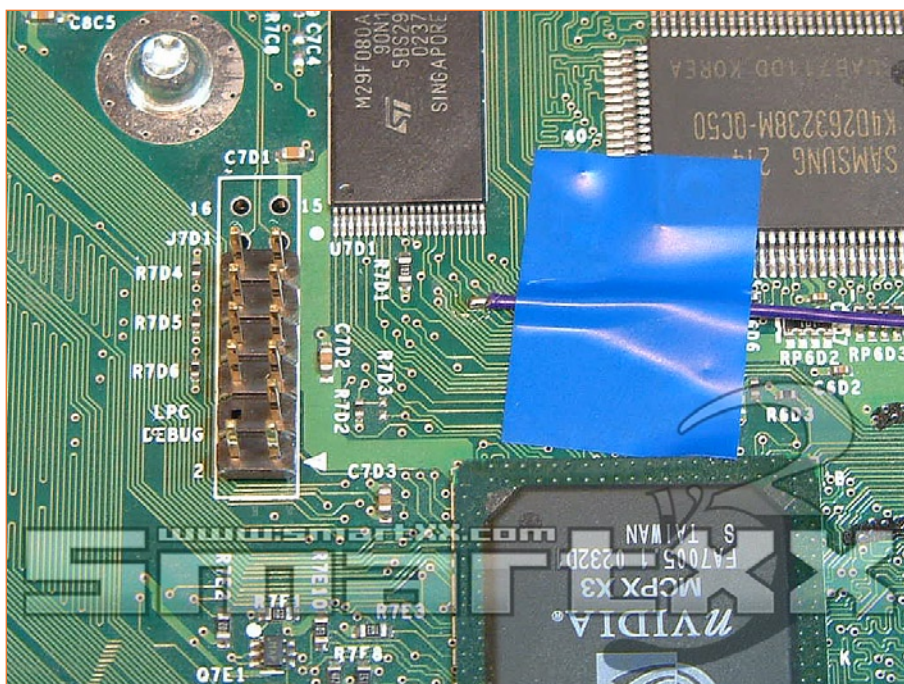
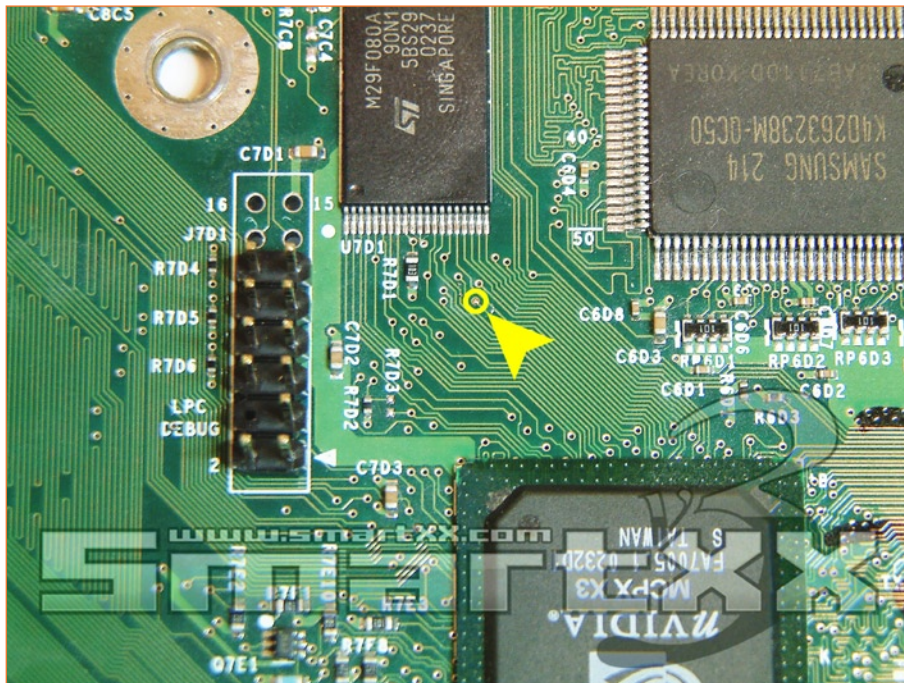
- purple: D0 (connect)
- white: cut / isolate
- yellow: isolate
- green: isolate
- black: isolate



11. Remove the D0-fan from your SmartXX v3 (break away).



12. Solder the D0-cable (purple) from the distributed adapter to the shown (red encircled) pad on the XBOX Mainboard. As a precaution fix the cable on the XBOX Mainboard with a sticky tape.

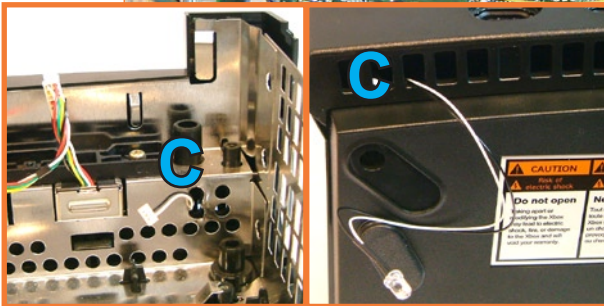
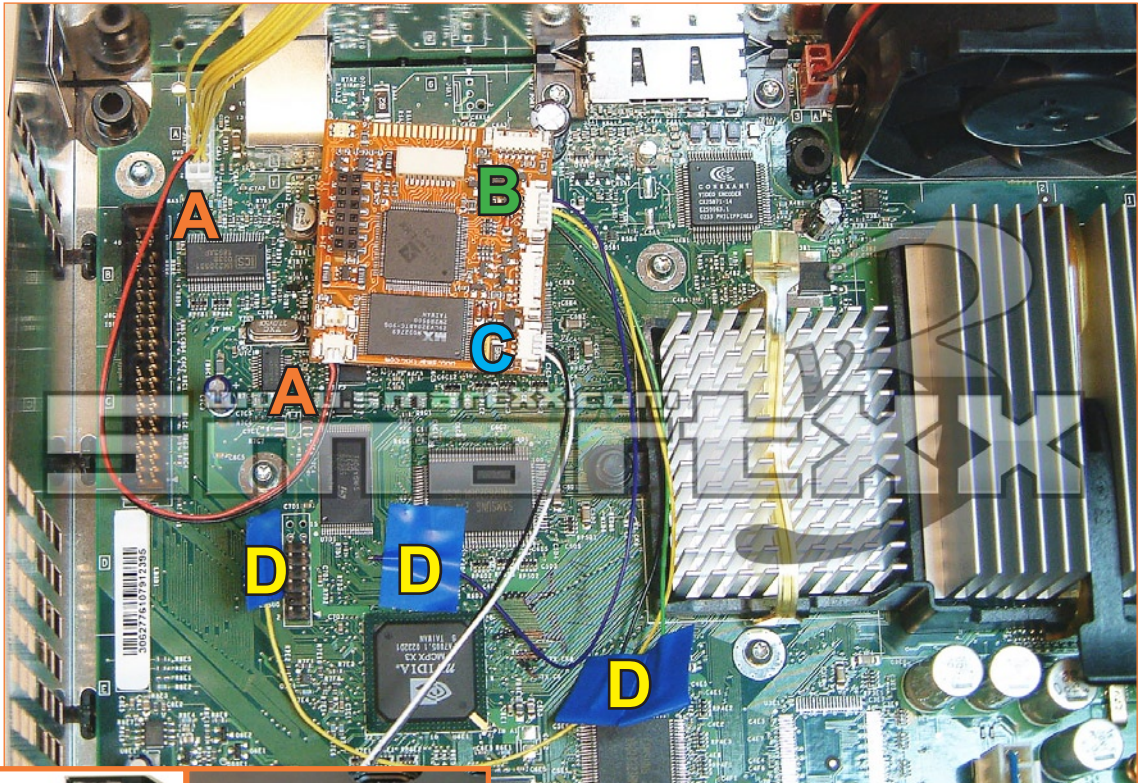


STEP 3: SMART UP YOUR XBOX

13. Reinstall the XBOX Mainboard in the chassis. Thereby replace the original power-cable leading from the XBOX Mainboard to the DVD-ROM with the one distributed with your SmartXX v3.

14. Connect the SmartXX v3

- connect the powersupply from the powercable leading to the DVD-ROM (A)
- connect the adaptor-cable to the plug on the SmartXX v3 (B)
- if you are using it: plug in the IR-sender-cable (C)
- Isolate the cables of the adapter you are not using. The D0 (purple) one can be cut off. (D)



15. After having connected all cables to the SmartXX v3 , plug it onto the Pinheader. previously installed. Be careful positioning it right (like on the pictures).

16. Test the correct function of the SmartXX v3 by powering up your XBOX. Therefor connect the Mainboard with all cables. There is no need to connect the drives, the SmartXX v3 will also start up without. The video-cable has to be plugged to the XBOX!

Put the drives back into the XBOX chassis and connect them with power and IDE-port.

Put the chassis back together and close your XBOX.

Finally you smart up your XBOX!

