



LCD Monitor
Professional Video Monitor

Video Products Technical Bulletin 30-2011-159

DATE: **October 31, 2011**

SUBJECT: **NO POWER FROM BLOWN FUSE ON G2 BOARD**

MODEL: **LMD-940W**
LMD-940W
PVM-740
PVM-740

SERIAL NO: **ALL**

Italicized information in green applies to customers outside the United States.

DESCRIPTION

If the F705 or F706 fuse on the G2 board blows, the power LED does not light and the monitor is not powered.

The service manual recommends replacing the G2 board if fuses blow; however, if F705 or F706 are the affected fuses, replace the appropriate fuse rather than the board.

PARTS REQUIRED

Part No.	Description	Qty.
9-913-801-81	Fuse, 7A/125V (F705 or F706)	1

ORDERING INFORMATION

To order parts online, go to: www.sony.com/servicesplus. For service or parts ordering assistance, refer to the following document, which lists all contact telephone numbers:

Technical Bulletin 00-1999-000

MODIFICATION PROCEDURE

G2 Board

1. Remove the rear cover and G2 board.
NOTE: Refer to the service manual.
2. Use a meter to check conduction of F705 and F706 on the G2 board. (See Figure 1.)
3. If either fuse is blown, replace the fuse with a new fuse.
4. Reinstall the G2 board, and close the rear cover.

CONFIRMATION

1. Turn power ON, and confirm that video is output.
2. If no video is output, the G2 board may need to be replaced with a new board.

Model	G2 Board Part No.
LMD-940W	1-857-411-1x
PVM-740	1-857-411-2x

NOTE: Refer to the troubleshooting section in the service manual.

DPMO11-030

G2 BOARD (SIDE A)

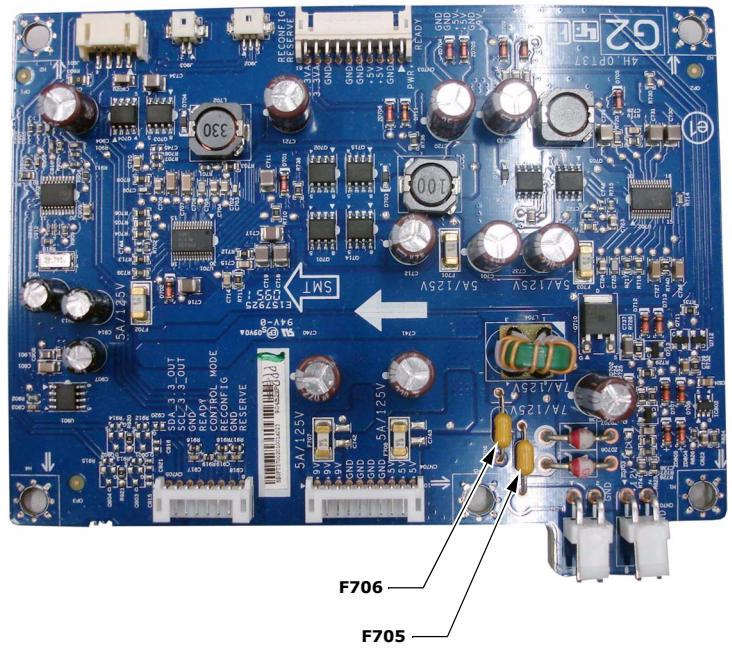


Figure 1