



Display

Video Products Technical Bulletin 30-2008-182

DATE: **September 29, 2008**SUBJECT: **FIRMWARE UPGRADE—VERSION 4.09 FOR
SUPPORT OF GXD-L52H1**

MODEL: **BKM-FW50/1
BKM-FW50/2
BKM-FW50/3
BKM-FW50/4
BKM-FW50/5**

DESCRIPTION

Firmware version 4.09 is available.

NOTE: Units with serial numbers 2,007,570 and higher already have V4.09 firmware.

SERIAL NO: **ALL****PARTS REQUIRED**

Part No.	Description	Qty.
FW50V409	BKM-FW50 Firmware V4.09	1

ORDERING INFORMATION

To order upgrades, contact:

Sony SoftwarePLUS®
8281 NW 107th Terrace
Kansas City, MO 64153
Call: (800) 538-7550
Fax: (816) 880-6854
Web: <http://www.sony.com/softwareplus>

Customers outside the United States: *Please order parts from your usual supplier.*

PROGRAM IMPROVEMENTS

- GXD-L52H1 is now supported.
- AUTO Adjust now operates while the picture is loading.

DPMO08-034R

UPGRADE PROCEDURE

System Requirements

- PC with LAN connection
- Compatible monitor
- Firmware update program (included with firmware)

NOTE: Perform the Streaming update before the Network update.

Preparation

1. Copy firmware and updater files to the PC:

- Firmware updater.exe
- vxWorks_Ver4.09.rom (streaming application file)
- image_debug_fw50_v412.rom (network application file)
- updater_fw50_v400.rom (network updater file)
- bootloader_fw50_v309.rom (network application file)

NOTE: If your unit has the same version or higher for the last two files listed above, those files are not needed.

2. Set the Windows Firewall to Off (if installed) as follows:

- a. On the PC, click Start > Settings > Control Panel > Windows Firewall.
- b. Click the Off radio button.

3. Connect BKM-FW50 to option slot 1 of the monitor. (See Figure 1.)



Figure 1

4. Make note of the IP address. (See Figure 2.)

NOTE: Refer to the *BKM-FW50 Operating Instructions* for details on how to set or confirm the IP address.

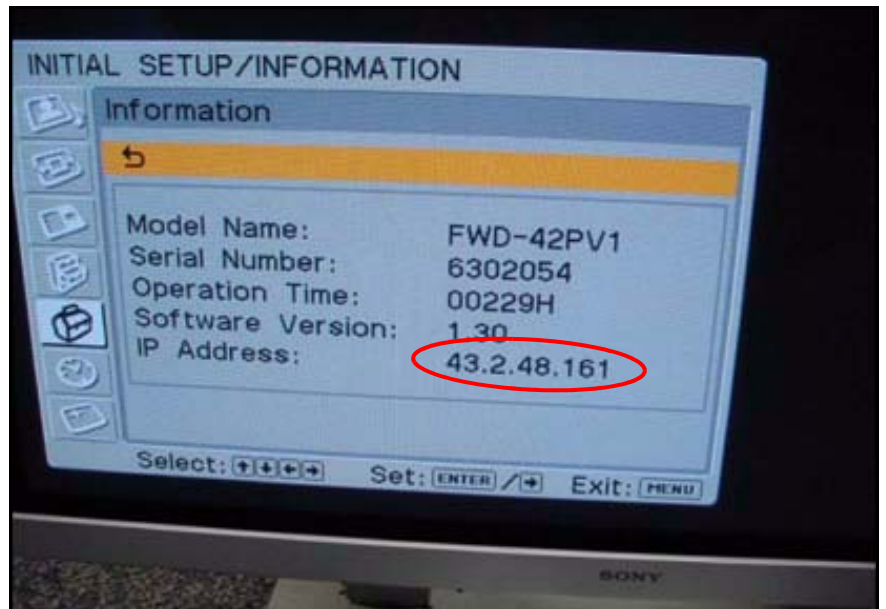


Figure 2

5. In the Address bar of Internet Explorer, type the applicable IP address, and press ENTER.

`http://xx.x.xx.xxx`

If successful, the screen in Figure 3 appears.



Figure 3

6. Enter the following user name and password using lowercase letters, and click OK. (See Figure 4.)

User name: service

Password: fwd_series

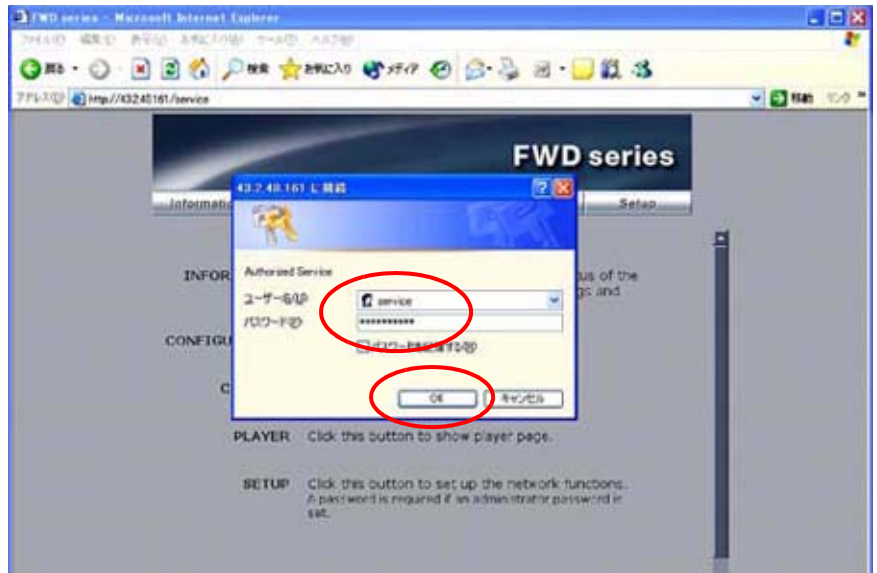


Figure 4

7. Click Update. (See Figure 5.)



Figure 5

Streaming Update

1. In the Update Module field, select Streaming Controller, then click Apply. (See Figure 6.)

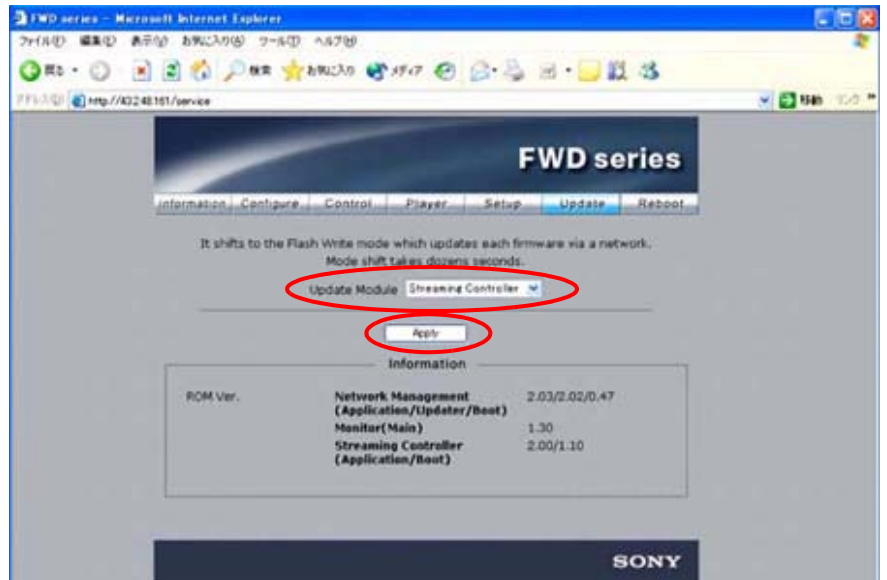


Figure 6

The application enters Flash Write Mode. (See Figure 7.)



Figure 7

2. Double-click the "Firmware updater.exe" file.

3. Enter the IP address, and click Search. (See Figure 8.)

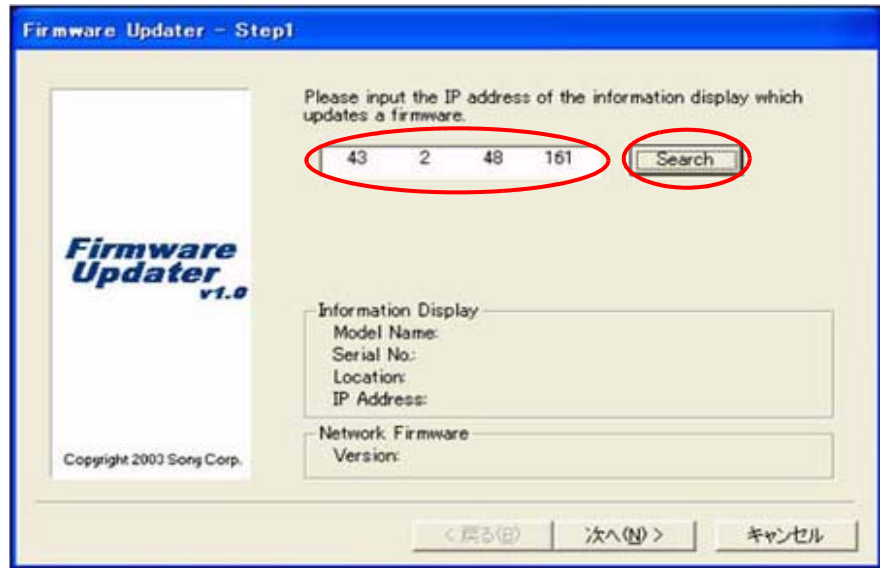


Figure 8

The Information Display Search window appears. (See Figure 9.)

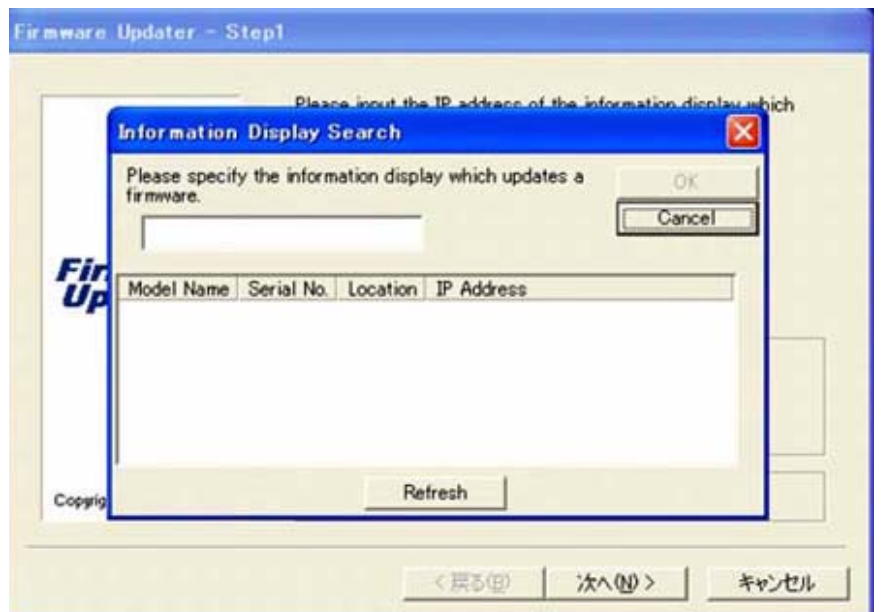


Figure 9

4. After a few minutes, the Model Name, Serial No., and IP Address are entered automatically.
Click OK. (See Figure 10.)

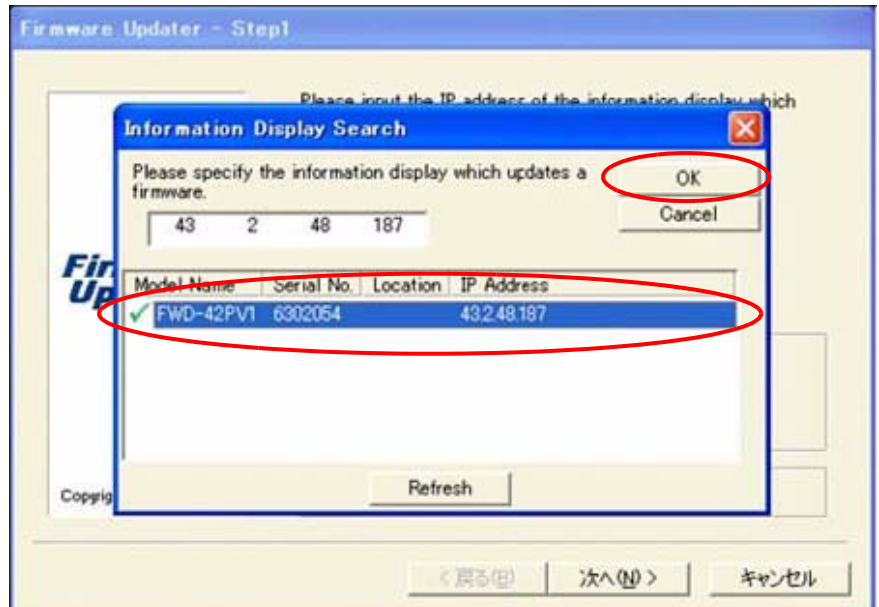


Figure 10

5. When the Information Display data are filled in, click Next.
(See Figure 11.)

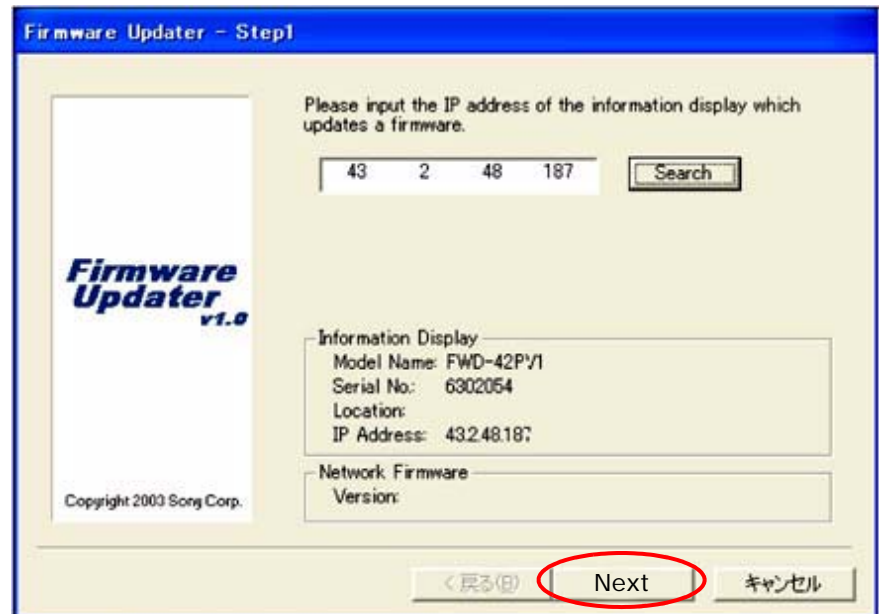


Figure 11

NOTE: If the network connection is bad and you cannot get to the Firmware Updater window as shown in Figure 11, perform the following steps:

- a. Under the "Preparation" heading, repeat steps 4 through 5, and click Information as shown in Figure 12.
- b. Write down the network address for IP Address (Controller) and IP Address (Player).



Figure 12

- c. Repeat steps 6 through 7 under the "Preparation" heading, and step 1 under the "Streaming Update" heading on page 5.
- d. Input the IP address for the IP Address (Player) noted in step b above. (See Figure 13.)

NOTE: Make sure to use the IP Address (Player) for the Streaming update (and IP Address (Controller) for the Network update).

- e. Click Next, then proceed to step 6 on page 9.

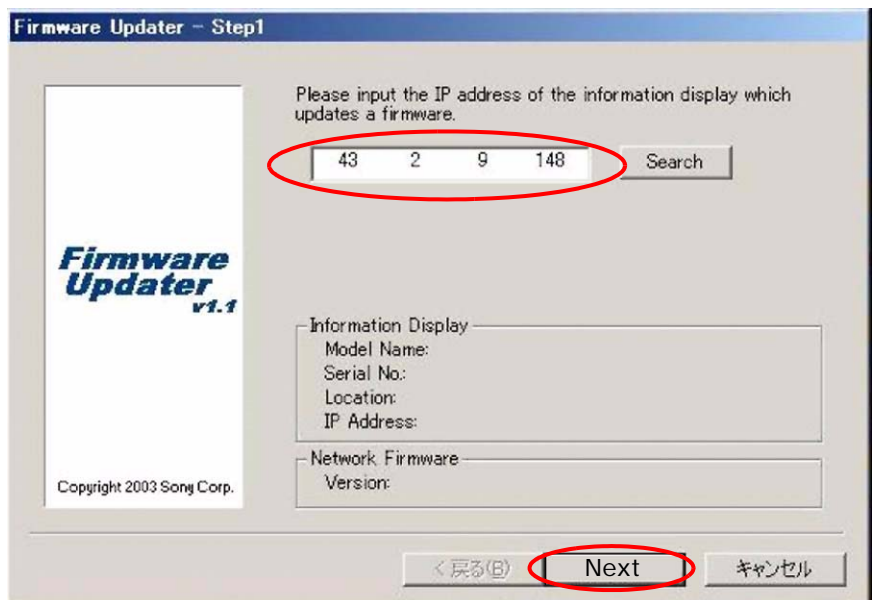


Figure 13

6. In the Firmware field, select NETWORK, and click Browse.
(See Figure 14.)

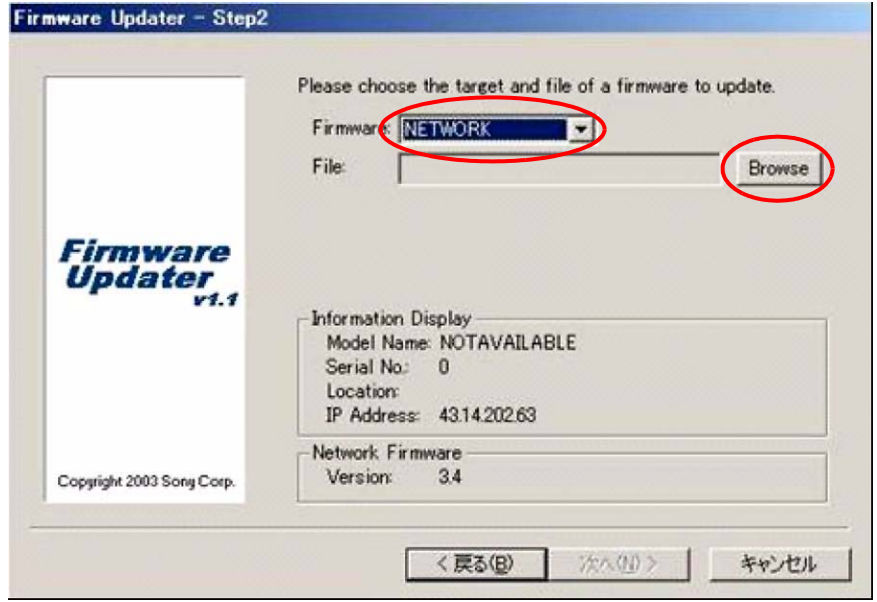


Figure 14

7. Select Streaming and "vxWorks_Ver4.09.rom," and click Open. (See Figure 15.)

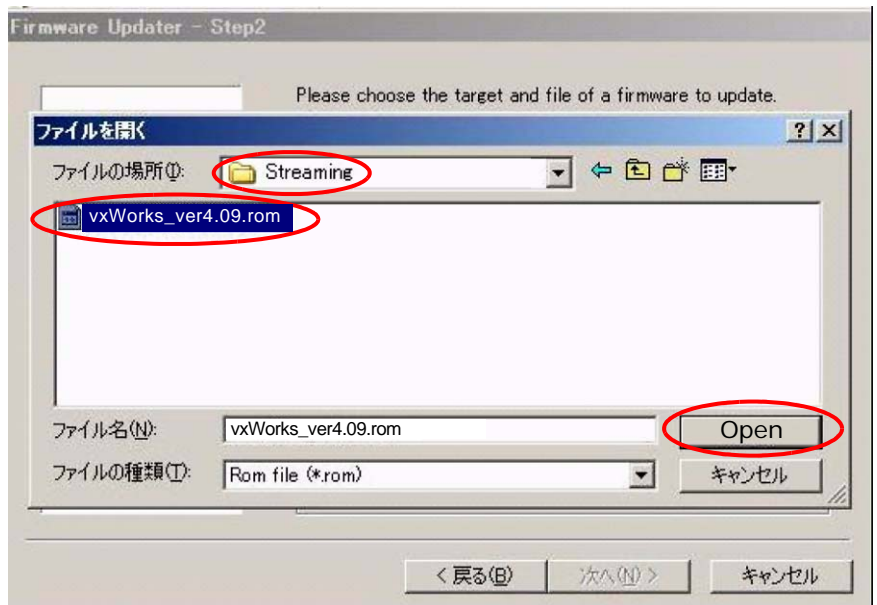


Figure 15

8. The required firmware is added to the File field. Click Next.
(See Figure 16.)

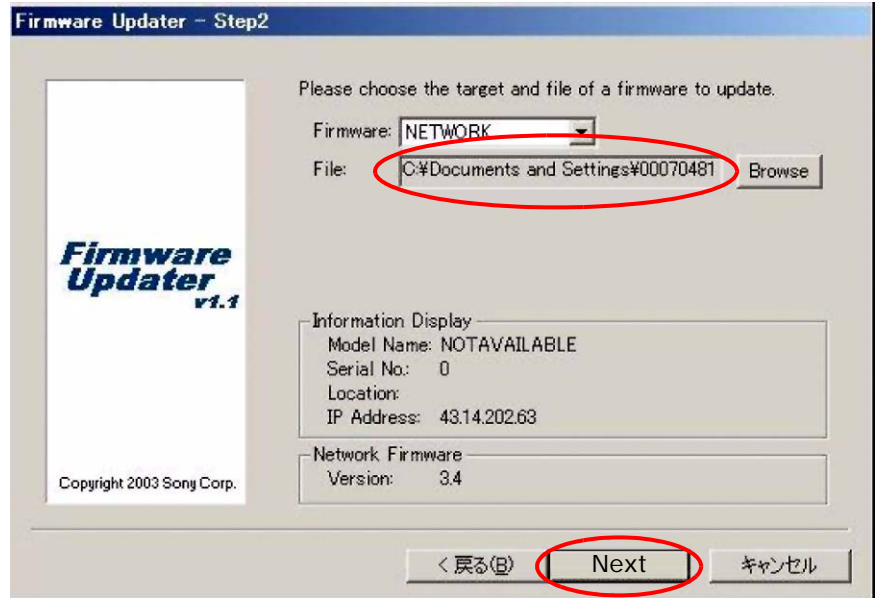


Figure 16

9. Click Update. (See Figure 17.)



Figure 17

10. The following screen appears during the update. (See Figure 18.)

NOTE: Do not click anywhere during the update.



Figure 18

11. When the Restart button appears on the screen, click Restart, then click Finish. (See Figure 19.)

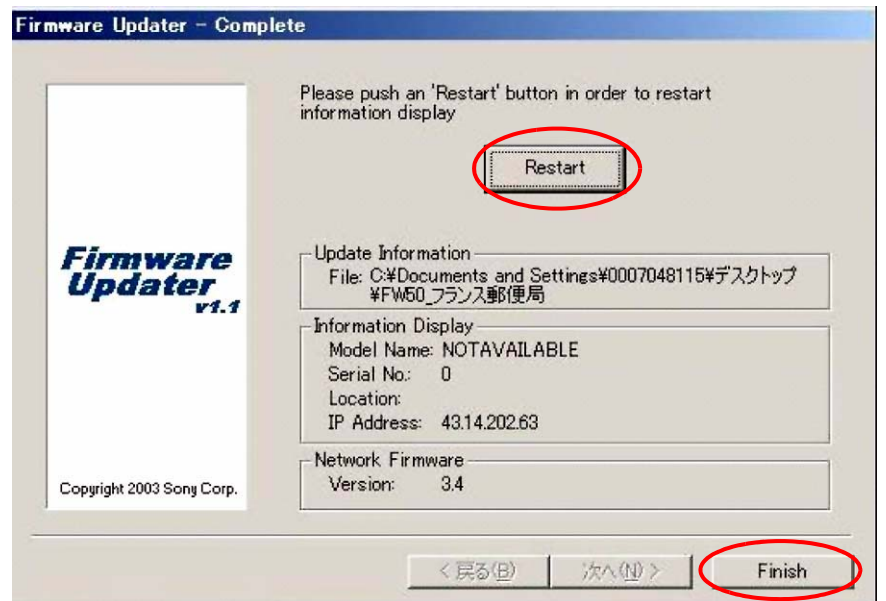


Figure 19

12. Close the Internet Explorer Browser.

Network Update

NOTE: If your unit has the following versions or higher, the network update is not necessary.

image_debug V4.12

updater V4.00

bootloader V3.09

1. Perform all the steps under "Preparation" starting on page 2 of this bulletin.
2. In the Update Module field, select Network Management, then click Update. (See Figure 20.)

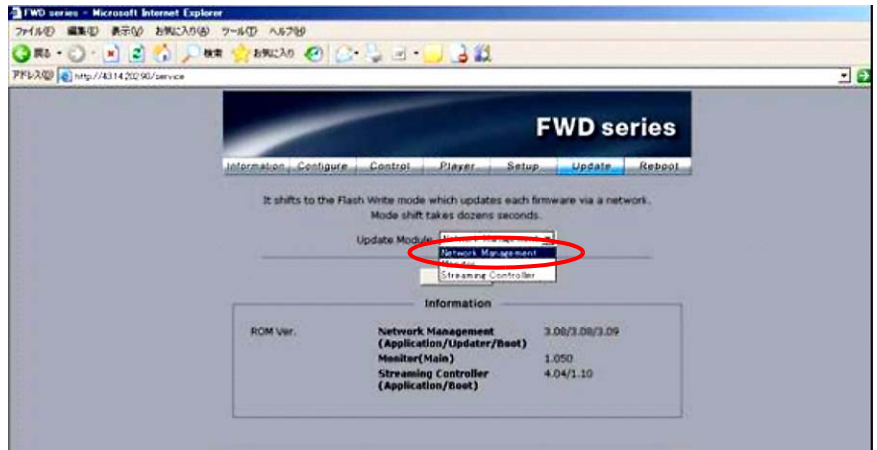


Figure 20

3. Under "Streaming Update" starting on page 5, perform steps 2 through 6.
4. Select "image_debug_fw50_v412.rom," and click Open. (See Figure 21.)

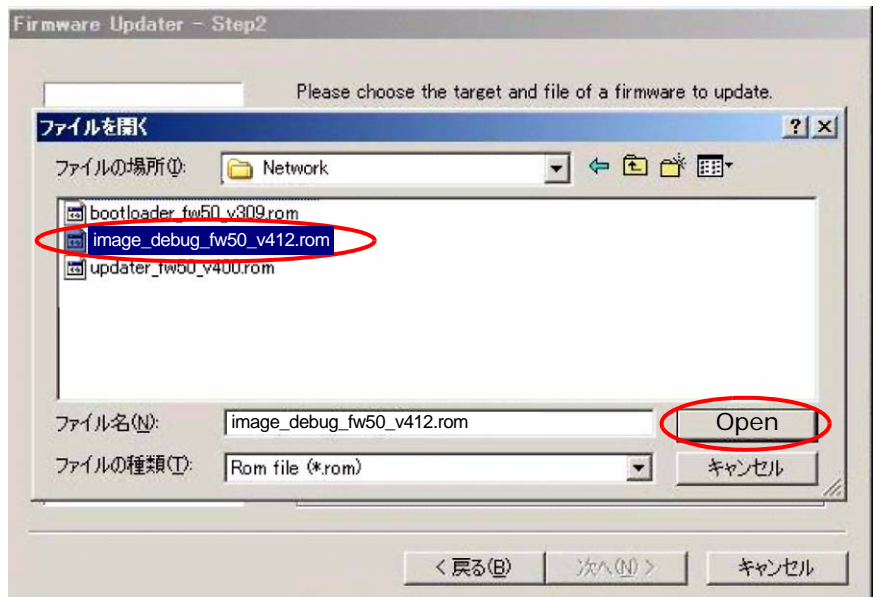


Figure 21

5. Under "Streaming Update" on page 5, perform steps 8 through 12.
6. Under "Network Update" on page 12, perform steps 1 through 3 again.
7. Select "updater_fw50_v400.rom," and click Open. (See Figure 22.)

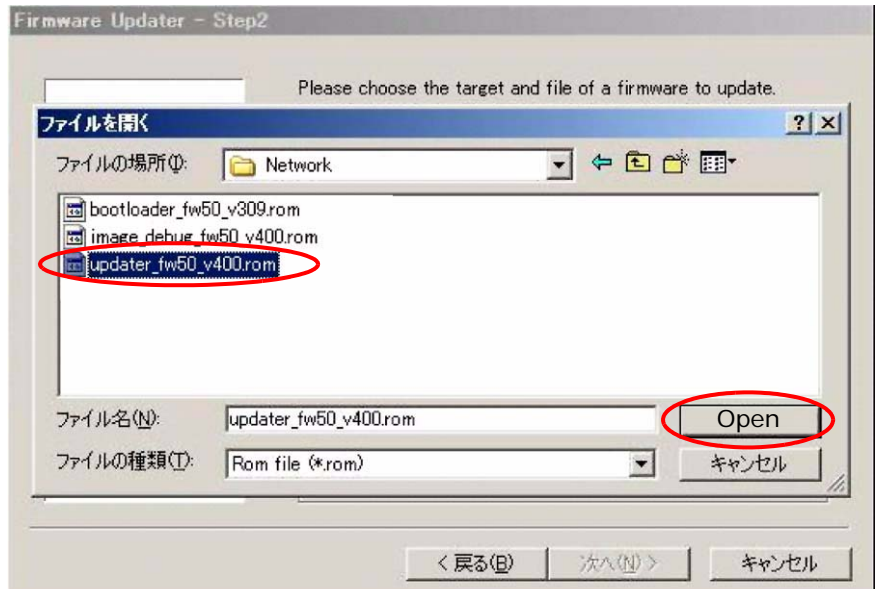


Figure 22

8. Under "Streaming Update" on page 5, perform steps 8 through 12 again.
9. If the bootloader V3.09 needs to be installed, install as follows; otherwise, skip to the confirmation.
 - a. Under "Streaming Update" on page 5, perform steps 8 through 12.
 - b. Under "Network Update" on page 12, perform steps 1 through 3 again.
 - c. Select "bootloader_fw50_v309.rom," and click Open. (See Figure 23.)

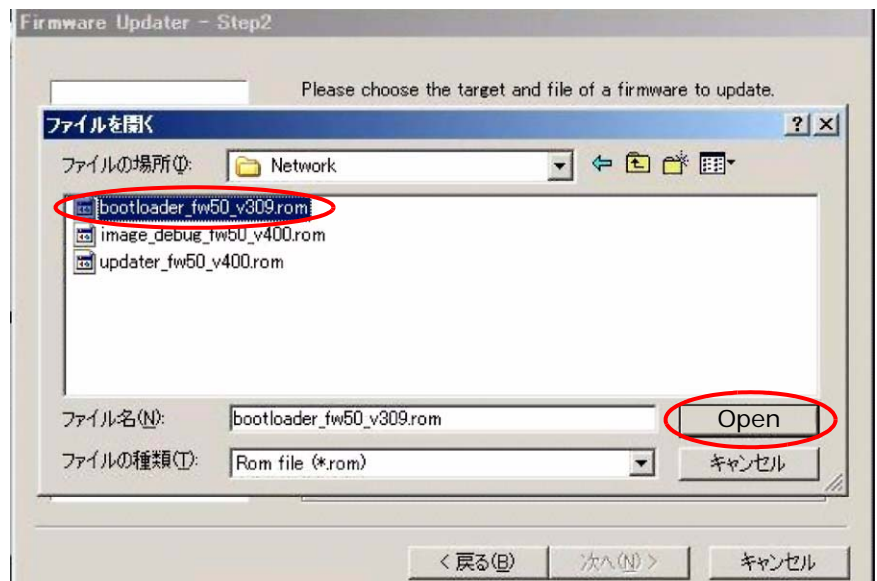


Figure 23

- d. Under "Streaming Update" on page 5, perform steps 8 through 12.
- e. Close the Internet browser on your PC.

CONFIRMATION

Confirm that the ROM versions are as follows. (See Figure 24.)

Network Management 4.12/4.01/3.09

Streaming Controller 4.09/x.xx

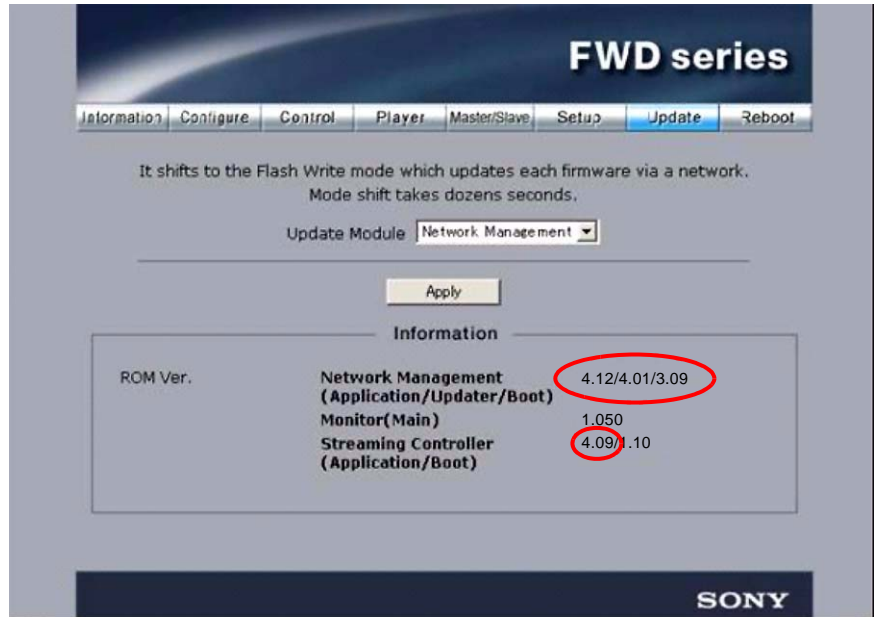


Figure 24