



Video Products Technical Bulletin 30-2017-020

DATE: **March 13, 2017**SUBJECT: **REPLACING QB BOARD**MODEL: **LMD-1541W**
LMD-1541W

SERIAL NO:

LMD-1541W 3,200,001–3,300,000
LMD-1541W 5,200,001–5,300,000

Italicized information in green applies to customers outside the United States.

DESCRIPTION

When inventory for the former QB mounted board is depleted:

1. Use the following QB board as a substitute:

Former		Substitute
1-895-004-61	→	1-895-328-11

NOTE: The substitute board is the same board used for PVM-741.

2. Replace R807 (0Ω) with a new 10 kΩ resistor (1-218-871-11).

ORDERING INFORMATION

To order parts online, go to: www.sony.com/servicesplus. For service or parts ordering assistance, refer to the following document, which lists all contact information:

Technical Bulletin 00-1999-000

REPLACEMENT PROCEDURE

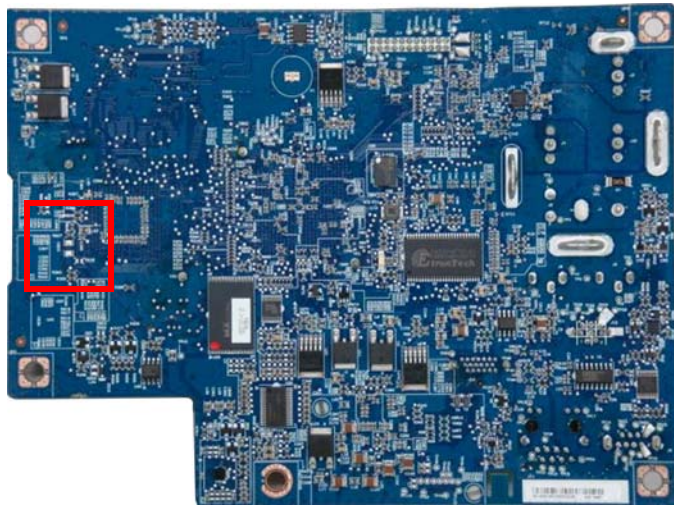
1. Remove the former QB board.
2. On the new QB board, replace R807 (0Ω) with a new 10 kΩ resistor (1-218-871-11). (See Figure 1.)
3. Install the new QB board.
4. Update board software to V2.02 (LMD1541W_CC_V2.02.zip).

NOTE:

- Contact your Sony service center to arrange for the update.
- If the software is not updated, the image will not appear on the monitor.

CONFIRMATION

1. Confirm that the image appears normally.
2. Rewrite the serial number or operating time as necessary.



QB BOARD

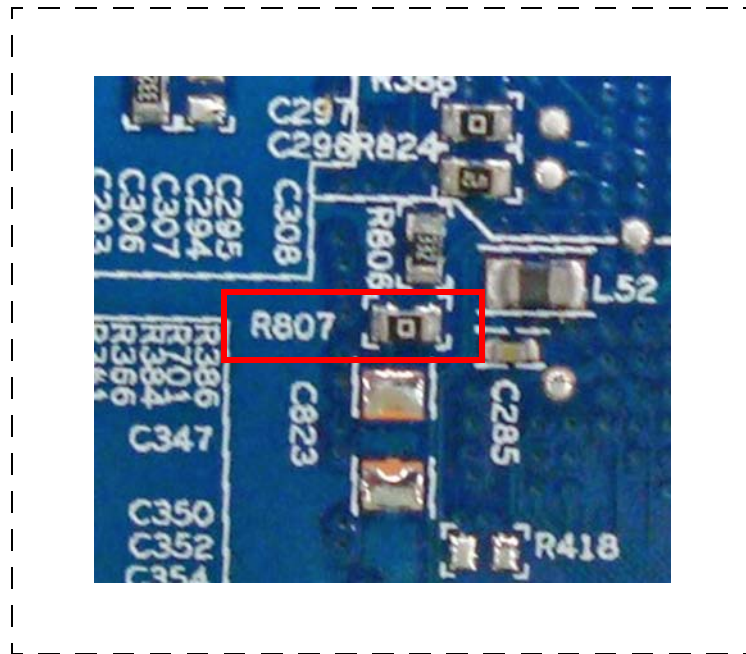


Figure 1