

Bulletin

DATE: AUGUST 1, 2013 **13-0215**

TO: MEDICAL PRODUCTS SYSTEM INTEGRATORS
MEDICAL VALUE ADDED SYSTEM INTEGRATORS

FROM: ANNE BONDULICH

SUBJECT: INTRODUCTION OF LMD-3251MT 32" MEDICAL GRADE 3D LCD MONITOR WITH
NEW LED BACKLIGHT TECHNOLOGY

TYPE: INTRODUCTION

Sony introduces the LMD-3251MT 32" 3D widescreen LCD monitor* to its comprehensive medical-grade display line-up. This new monitor provides extraordinary 3D video imaging when connected with a 3D camera system and can also display high quality images from conventional 2D camera systems found in most OR's today.

It offers a superb combination of newly employed LED backlight technology to reproduce brighter images, Sony's exclusive ChromaTRU™ color-matching technology, and a full HD 1920 x 1080 resolution panel with a wide viewing angle. The LMD-3251MT features a micro polarized screen attached to the LCD panel that works in conjunction with the supplied passive 3D glasses to separate right-eye and left-eye images. These lightweight circular polarizer 3D glasses offer surgeons uninterrupted viewing whether looking directly at the monitor or away from it with no image distortion.

3D imaging provides a truer visual experience similar to natural sight. It improves depth perception and spatial orientation and as a result can help the surgeon more easily grasp, cut, and suture tissue.

*Viewable area measured diagonally



(simulated image)

Suggested Applications

Ideal for use with endoscopic camera systems, microsurgery applications and robotic surgical camera systems. For displaying surgical video in the operating room or for any other medical application requiring a high performance medical grade monitor. The LMD-3251MT can also be used in conjunction with the HVO-3000MT Medical grade 3D recorder and the MCC-3000MT 3D camera (which can be mounted on almost any scope with an adaptor) for a total end-to-end 3D solution. The Sony 3D solution+ has proven to be a great asset both in the O.R. as well for training and education purposes. This display can be easily mounted on surgical carts, boom arms, or walls.**

+ Using the current LMD-2451MT 24" 3D monitor

** For mounting on carts or at a desktop workstation use the matching Sony SU-32FW/S monitor stand (optional).

Option Boards for LMD-3251MD

1. BKM-250TG (3G/HD/SD-SDI input adaptor)

- Dimension (W x H x D) : Approx. 100mm x 20 mm x 162 mm
- Mass : Approx. 270g
- Power consumption : Approx. 4.0W
- Signal input : BNC (2)
- Monitor output : BNC (2)



2. BKM-256DD (DVI-D input/output adaptor)

- Dimension (W x H x D) : Approx. 100mm x 20 mm x 154 mm
- Mass : Approx. 250g
- Power consumption : Approx. 2.0 W
- DVI-D 24-pin connectors: 1 input and 1 loop-through output



3. **BKM-220D (SDI 4:2:2 input adaptor)**

- Dimension (W x H x D) : Approx. 100mm x 20 mm x 162 mm
- Mass : Approx. 250g
- Power consumption : Approx. 1.5W
- Signal input : BNC (2)
- Monitor output : BNC (2)



4. **BKM-243HS (HD/D1-SDI input adaptor)**

- Dimension (W x H x D) : Approx. 100mm x 20 mm x 162 mm
- Mass : Approx. 250g
- Power consumption : Approx. 2.0 W
- Signal input : BNC (2)
- Monitor output : BNC (1)



5. **BKM-227W (NTSC/PAL input adaptor)**

- Dimension (W x H x D) : Approx. 100mm x 20 mm x 162 mm
- Mass : Approx. 240g
- Power consumption : Approx. 1.8W
- Analog composite input : BNC (1)
 - Loop-through output : BNC (1)
- Y/C input : Mini DIN 4-pin (1)
 - Loop-through output : Mini DIN 4-pin (1)



6. **BKM-229X (Analog component input adaptor)**

- Dimension (W x H x D) : Approx. 100mm x 20 mm x 162 mm
- Mass : Approx. 250g
- Power consumption : Approx. 4.0 W
- Analog component input(Y/PB/PR, G/B/R) : BNC (3)
- External Sync input : BNC (1)



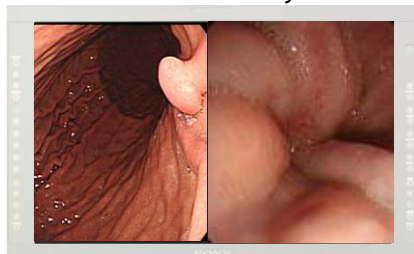
Key Features and Benefits

- **LED backlight Technology:** to reproduce brighter images
- **Sony ChromaTRU Color Balance:** advanced color space conversion and white balance calibration technology for vivid and accurate colors
- **16:9 Widescreen Aspect Ratio:** larger field of view for better visibility of surgical area and full screen display of HD signal
- **Touch-activated Picture Controls:** located on front bezel, controls are backlit when activated; provides a simple user interface
- **8 DVI Signal Presets:** designed to match various OEM endoscopic systems
- **Various Color Temperature, Gamma Selection and Scan Settings:** for customization to specific applications and/or users
- **Sophisticated I/P (Interlace to Progressive) Conversion:** using advanced technology, images from interlaced video sources are converted for display on the progressive panel without scaling thus maximizing quality
- **20 User Memory:** function settings programmable to user preferences
- **Serial RS232C or Ethernet Remote:** for flexible remote control options
- **Flat Surface LCD Panel:** for easy cleaning
- **Key Lock Control Button:** conveniently prevents unintentional picture setting changes during procedures
- **VESA Mounting:** complies with the 100mm hole spacing VESA mounting standard
- **7 Language On Screen Display:** English, French, Spanish, German, Italian, Chinese and Japanese
- **24/5V DC Operation Capability**
- **Two Built-in Option Slots:** to easily expand, select, and change input/output signals via optional input adapter boards
- **Accepts Two New Option Boards:** BKM-256DD to accept a second DVI-D input and one DVI loop-through, BKM-250TG to accept a 3G 1080/60p signal via single SDI cable

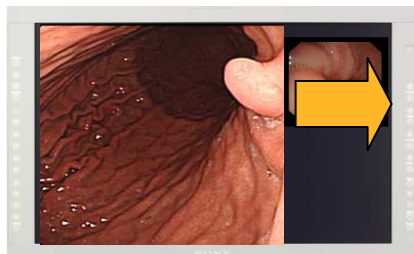
INTRODUCTION OF LMD-3251MT 32" MEDICAL GRADE FULL HD LCD MONITOR
BULLETIN #13-0215
PAGE 5

- **Enhanced Multi-Picture Display:** picture-outside-picture (POP), & side-by-side for flexible multi-image viewing with full scan capability

New Full Scan Side by Side



New Full Scan Picture Out Picture



(Simulated Images above)

The full scan improvement increases image size/viewing distance and provides a more efficient use of screen real estate.

Pricing

The LMD-3251MT is available in the following configurations:

| MODEL | DESCRIPTION | SYSTEM INTEGRATOR PRICE | AVAILABLE |
|----------------|---|-------------------------|-----------|
| LMD-3251MT* | 24" HD Medical Grade LCD Monitor | \$5,037.20 | Now |
| LMD-3251MT/HD* | 24" HD Medical Grade LCD Monitor with built-in BKM-243HS HD-SDI Board | \$5,261.20 | Now |
| LMD-3251MT/3G* | 24" HD Medical Grade LCD Monitor with built-in BKM-256DD DVI Board | \$6,020.00 | Now |

Optional Accessories for the LMD-3251MD:

| MODEL | DESCRIPTION | System Integrator PRICE | AVAILABLE |
|-------------|--|----------------------------|-----------|
| SU-32FW/S | Desktop Stand for LMD-3251MT | \$195.44 | Now |
| BKM-220D | SDI 4:2:2 Input Adapter for LMD Series Monitors | \$393.75 | Now |
| BKM-243HS | HD/D1-SDI Input Adapter for LMD Series Monitors | 974.25 | Now |
| BKM-227W | NTSC/PAL Input Adapter for LMD Series Monitors | \$562.50 | Now |
| BKM-229X | Analog Component Input Adapter for LMD Series Monitors | \$562.50 | Now |
| BKM-250TG/3 | 3G/HD/SDI Input Adapter for LMD-3251MT | \$1,717.50 | Now |
| BKM256DD | DVI Input Adapter for LMD-3251MT | \$487.50 | Now |

Only the BKM-256DD and BKM250TG/3 option boards can can input 3D video signals.

Please contact your Sony Account Manager should you have any questions.

Good Selling!

Anne Bondulich
Marketing Manager for Surgical Products
Medical Systems
Professional Solutions of America
Sony Electronics, Inc