



# Video Products Technical Bulletin 30-2006-067

DATE: May 15, 2006

SUBJECT: **BRIGHTNESS CHANGES WITH TALLY ON**

MODEL: ***PVM-9L2***  
***PVM-9L2***  
***PVM-9L2//C***  
***PVM-9L3***  
***PVM-9L3***

**DESCRIPTION**

Brightness may change when tally is turned ON because the power line of the signal system is adversely affected by the load of the tally lamp.

Change the power source of the tally lamp as follows.

SERIAL NO:

*PVM-9L2*      *2,500,001–2,500,332*  
PVM-9L2      2,000,001–2,021,232  
*PVM-9L2//C*    *2,800,001–2,800,625*  
*PVM-9L3*      *2,500,001–2,500,255*  
PVM-9L3      2,000,001–2008446

**MODIFICATION PROCEDURE**

**Parts Required**

- Jumper, UL1061 AWG26, 600 mm YEL or equivalent
- RTV (KE3490) or equivalent (7-322-065-48)

**Procedure**

1. On the B board, cut the trace connected to the emitter of Q460 (12V) (side B, zone A-5). (See Figure 1.)

*Italicized information in green applies to customers outside the United States.*

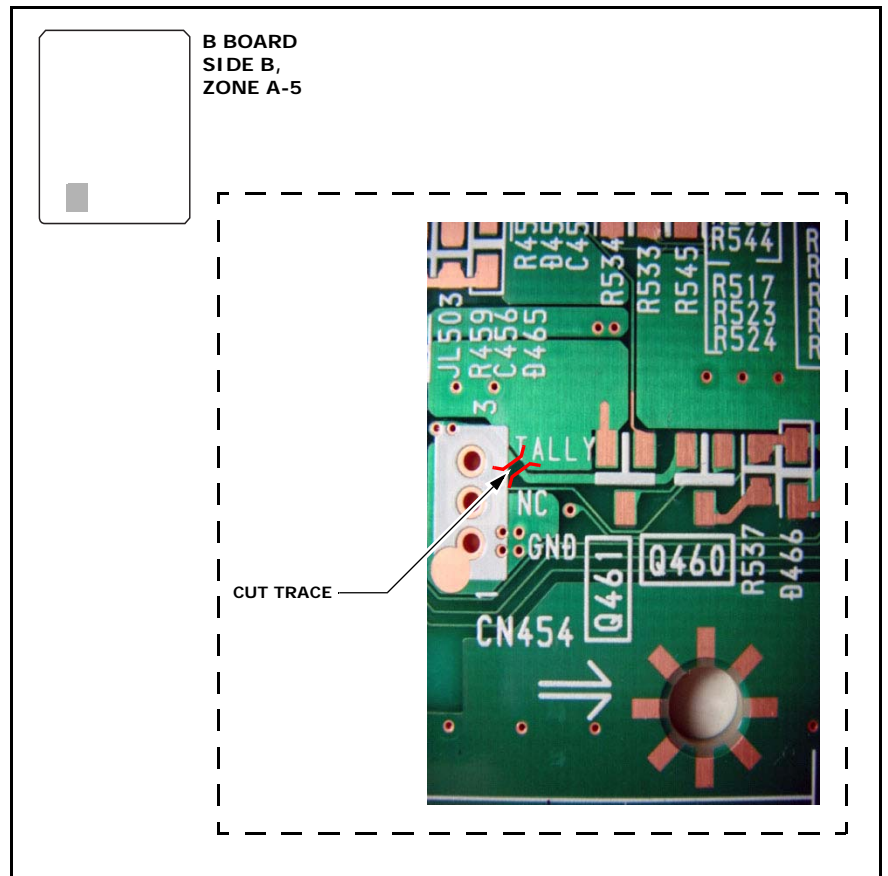
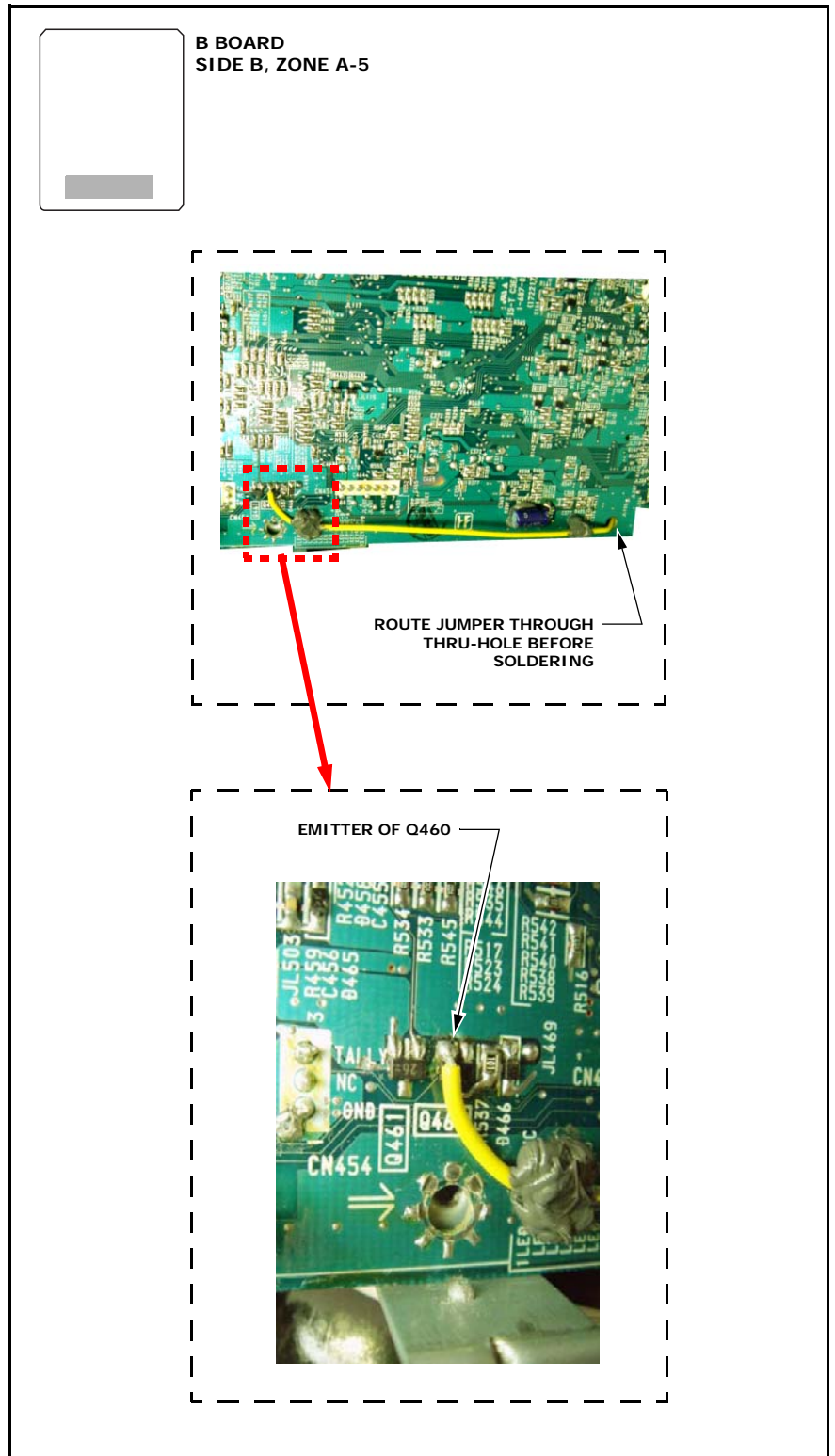


Figure 1

DPMO05-032

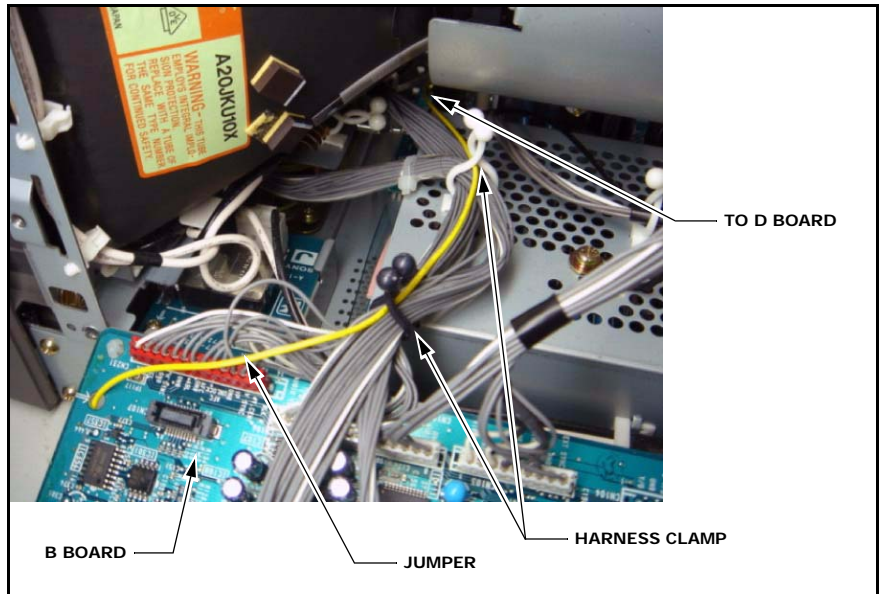
2. Route a 600 mm jumper (UL1061, AWG26 or equivalent) through the thru-hole in the B board, and solder one end of the jumper to the emitter of Q460 (side B, zone A-5). (See Figure 2.)

**NOTE:** Route the jumper through the thru-hole before soldering.



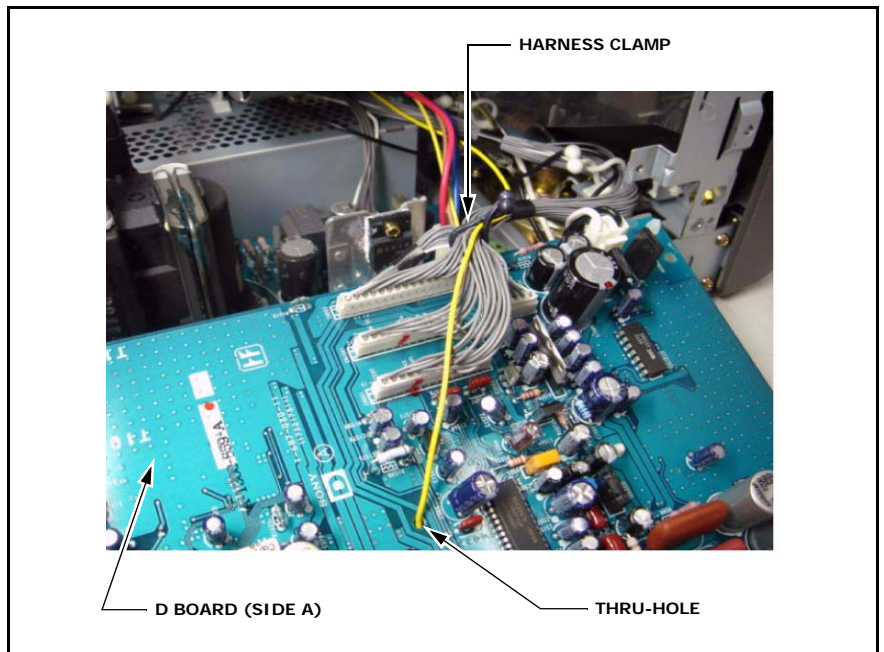
**Figure 2**

3. Pass the jumper through the harness clamps to the D board.  
(See Figure 3.)



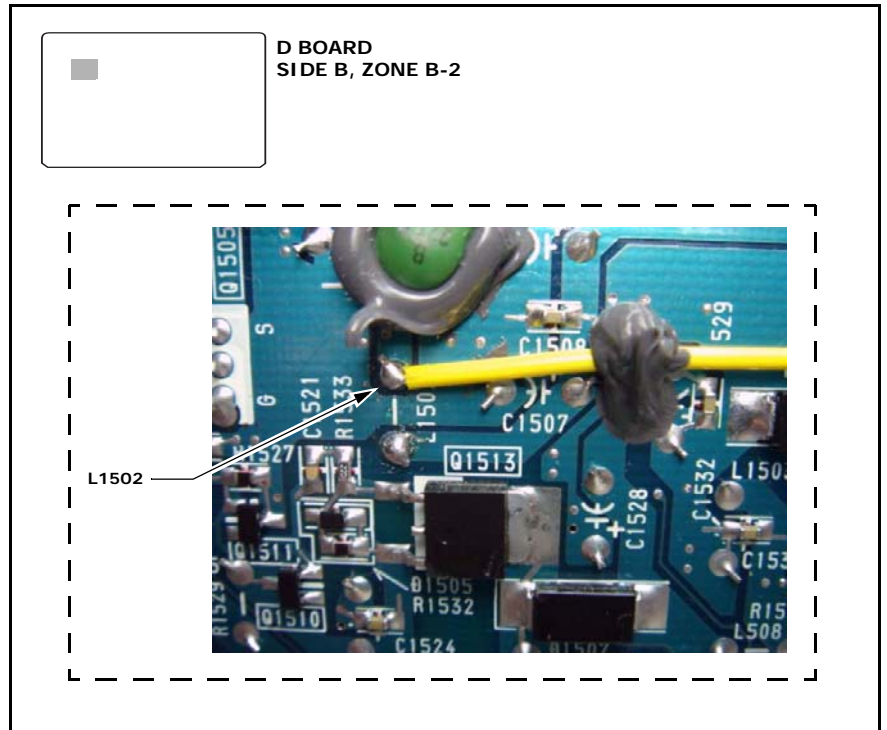
**Figure 3**

4. Route the jumper through the harness clamp on the D board, then route the jumper through the thru-hole in the center of the D board. (See Figure 4.)



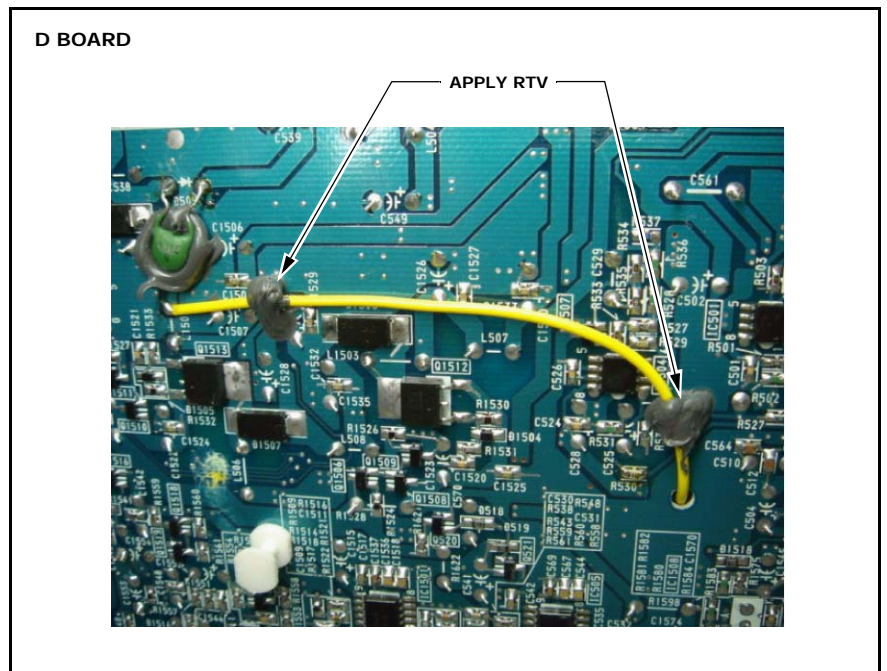
**Figure 4**

- Solder the other end of the jumper to the upper side of L1502 on the D board (side B, zone B-2). (See Figure 5.)



**Figure 5**

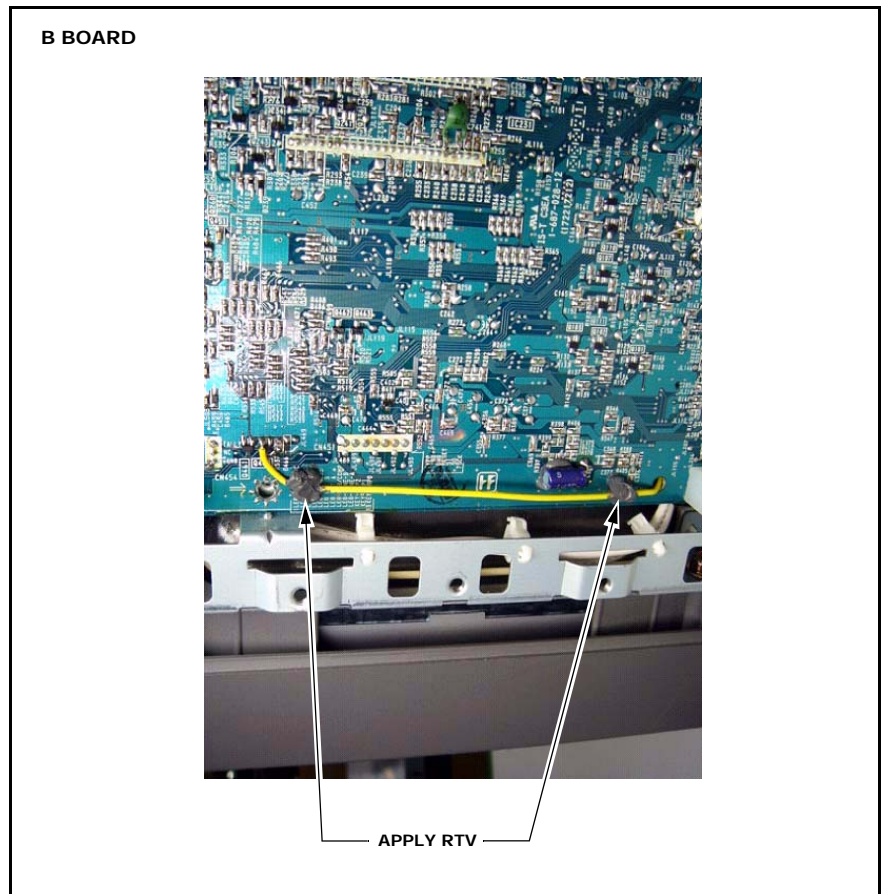
- Affix the jumper to the D board with RTV. (See Figure 6.)



**Figure 6**



7. Affix the jumper to the B board with RTV. (See Figure 7.)



*Figure 7*