



Sony Ericsson

---

# Working Instructions

- mechanical -



*R800i, R800a, R800x, R800at, Z1*



# CONTENTS

<b>1</b>	<b>Exterior Views.....</b>	<b>5</b>
1.1	R 800i, R800a, R800x, R800at, Z1.....	5
1.2	R 800i, R800a, R800x, R800at, Z1.....	6
<b>2</b>	<b>Tools.....</b>	<b>7</b>
<b>3</b>	<b>Disassembly.....</b>	<b>8</b>
3.1	Battery Cover.....	8
3.2	Battery.....	8
3.3	D-Cover.....	9
3.4	C-Cover & PBA & PBA Audio Jack FPC.....	10
3.5	Cap Screw Cover.....	12
3.6	Label Touch Circuit.....	13
3.7	A-Cover.....	14
3.8	Display.....	15
<b>4</b>	<b>Replacement.....</b>	<b>18</b>
4.1	Battery Cover.....	18
4.2	D-Cover.....	18
4.3	PBA Audio Jack FPC.....	18
4.4	C-Cover.....	18
4.5	Cap Screw Cover.....	19
4.6	Label Touch Circuit.....	19
4.7	A-Cover.....	19
4.8	Display.....	19
4.9	Ant BT/WLAN.....	20
4.10	Ant Main FPC.....	21
4.11	Bracket Hinge Plug.....	22
4.12	Camera.....	24
4.13	Camera Lens.....	26
4.14	Cap Antenna Port Plug.....	27
4.15	Cap Proximity Grommet.....	28
4.16	Conductive Hinge Plug.....	29
4.17	Core Unit Label.....	30
4.18	Cover Plastic SIM Card plug-CDMA.....	32
4.19	Cushion LCD Shim Black.....	33
4.20	Foil 0.0 mm Tape, Hinge Plug.....	34
4.21	Foil Adhesive conductive.....	35
4.22	Foil Adhesive ESD.....	36
4.23	Foil Adhesive Touch Flex.....	37
4.24	Foil Grounding Camera.....	38



4.25 FPC Zeus GPS Antenna ..... 39

4.26 Gasket Camera ..... 40

4.27 Gasket Conductive 1 Golden..... 41

4.28 Gasket Conductive 2 Golden..... 42

4.29 Gasket Conductive 3,8x2,3 ..... 43

4.30 Gasket Home Key ..... 44

4.31 Gasket Speaker, Left..... 45

4.32 Gasket Trigger switch gasket..... 46

4.33 Gasket VT ..... 47

4.34 B-Cover ..... 48

4.35 Key 4 ..... 49

4.36 Key Direction ..... 50

4.37 Key Power..... 51

4.38 Key SSH ..... 52

4.39 Key Volume ..... 53

4.40 Keyboard Navigation ..... 54

4.41 Water Indicator Foil 0.34 mm..... 55

4.42 Loudspeaker & Foil 0.0 mm Speaker adhesive ..... 56

4.43 Magnet ..... 58

4.44 Net Speaker Cloth ..... 59

4.45 PBA Receiver Flex ..... 61

4.46 PBA Top Keypad Flex ..... 64

4.47 PBA Zeus Hinge Flex ..... 66

4.48 PBA Zeus USD Board ..... 68

4.49 Power LED Tape..... 70

4.50 Shield Can Closed Lid – BB ..... 71

4.51 Shield Can Closed Lid – BB Tall ..... 72

4.52 Switch Cover Adhesive..... 73

4.53 Washer ..... 74

Liquid Intrusion Indicator ..... 75

4.54 Board Swap ..... 76

    4.54.1 Board Swap- Replacement ..... 76

    4.54.2 Board Swap – Change Label ..... 76

    4.54.3 Board Swap – Customize of Software ..... 76

**5 Reassembly..... 77**

    5.1 Display ..... 77

    5.2 Front Assembly ..... 79

    5.3 Label Touch Circuit..... 80

    5.4 Cap Screw Cover..... 80

    5.5 C-Cover & PBA & PBA Audio Jack FPC ..... 81

    5.6 D-Cover ..... 84

5.7	Battery.....	86
5.8	Battery Cover.....	86
6	Revision History .....	88

**For general information about mechanical repair related issues, refer to  
1220-1333: Generic Repair Manual - mechanical**





# 1 Exterior Views

## 1.1 R800i, R800a, R800x, R800at, Z1



## Exterior Views

### 1.2 R800i, R800a, R800x, R800at, Z1



## 2 Tools

### SPECIAL TOOLS

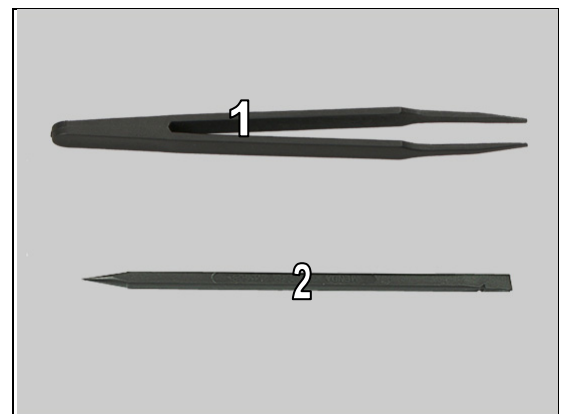
1. Guitar Pick
2. Flex Film Assembly Tool
3. Front Opening Tool
4. Torque Screwdriver
5. Bits(JCIS No 0)
6. Bits(T5)



**For part no's on the tools above, refer to the 'Tools Catalogue/Matrix'!**

### STANDARD TOOLS

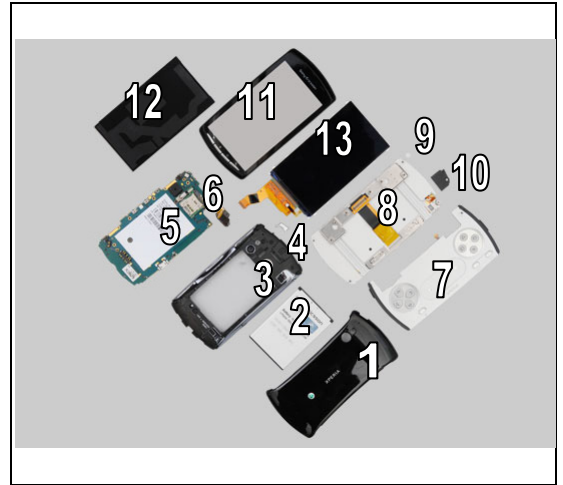
1. Tweezers
2. Nylon Pointer



## 3 Disassembly

The disassembly is done in the following order:

1. Battery Cover
2. Battery
3. D-Cover
4. Key Power
5. PBA
6. PBA Audio Jack FPC
7. C-Cover
8. B-Cover
9. Cap Screw Cover
10. Label Touch Circuit
11. A-Cover
12. LCD Shim
13. Display



### 3.1 Battery Cover

Push upwards to unsnap the hooks of the Battery Cover from the bottom gently and remove it.



### 3.2 Battery

Use fingers to release the battery.



Lift to remove the Battery.



## Disassembly:

### 3.3 D-Cover

Remove the six Screw Torx Len:3.4 Diam:3.0 M1.6 X 0.35 by T5.



Remove the seven Screw Torx Len:5.4 Diam:2.5 M1.6 X 0.35 by T5.



Sliding the guitar pick to unsnap the hooks from the bottom.



Sliding the guitar pick to unsnap the sides' hooks and remove it.





# Disassembly

Separate the Key Power.



## 3.4 C-Cover & PBA & PBA Audio Jack FPC

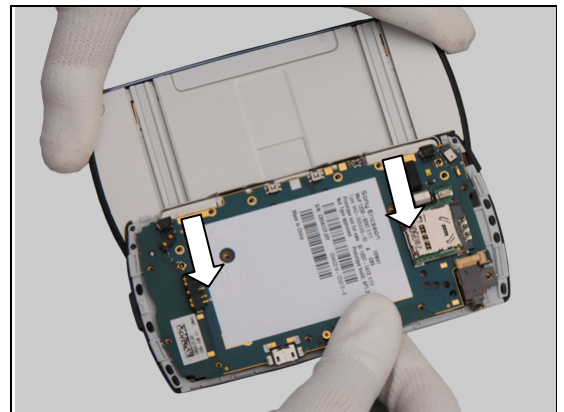
Remove the two Screw Phillips Len:2.3 Diam:3.0 M1.6 X 0 by Bits (JCIS No 0).



Unsnap the BtB connector by using a Front Opening Tool.



Open the slider and remove the C-Cover and the PBA together from the Upper Unit gently.

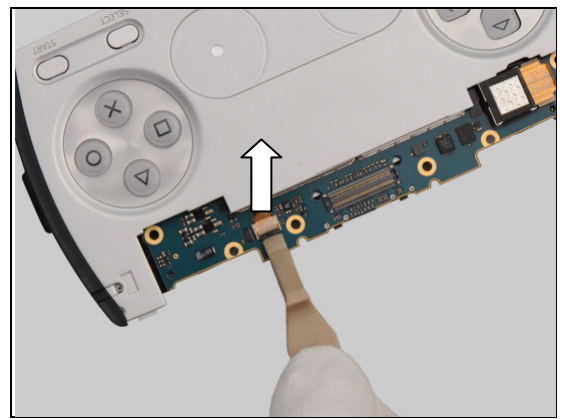


## Disassembly

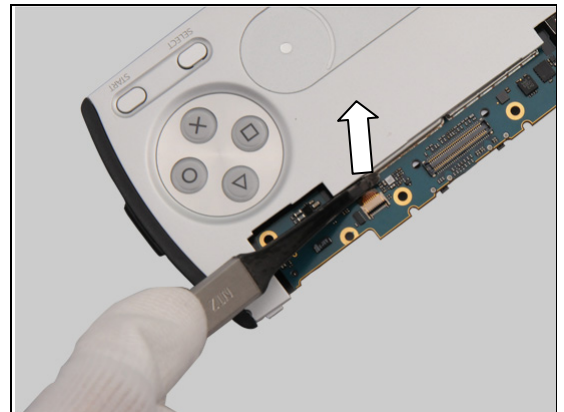
Separated them.



Unsnap the ZIF connector by using a Front Opening Tool.



Release the flex part from the ZIF connector.



Unsnap the ZIF connector by using a Front Opening Tool.



## Disassembly

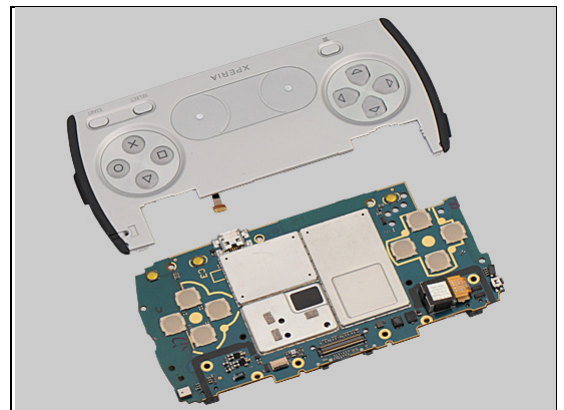
Unsnap the PBA Audio Jack FPC gently.



Remove the PBA Audio Jack FPC by using the flex film assembly tool.



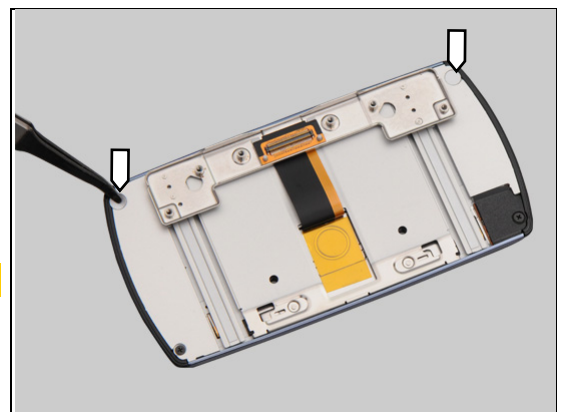
Separate the PBA and the C-Cover.



### 3.5 Cap Screw Cover

Detach to remove the Cap Screw Cover with using a pair of tweezers.

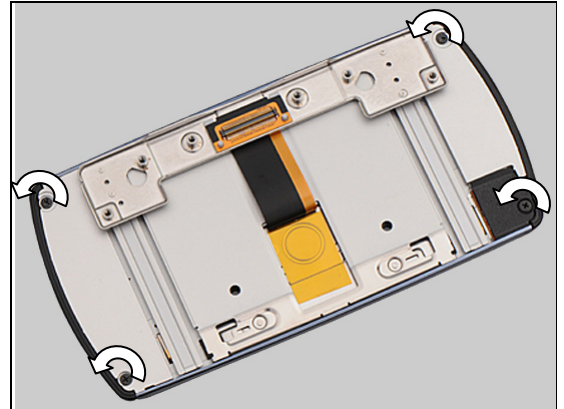
**Scrap! Cap Screw Cover is not to be reused!**





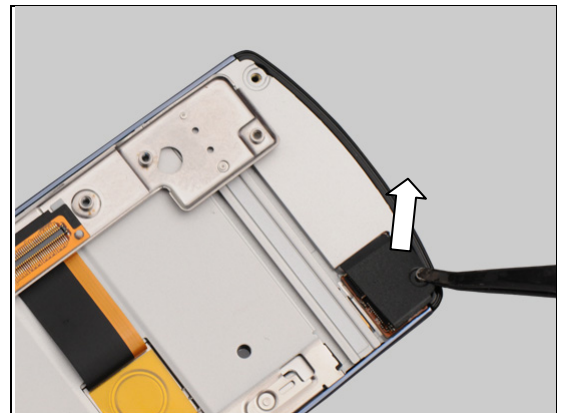
## Disassembly

Remove the four Screw Phillips Len:2.3 Diam:3.0 M1.6 X 0 by Bits (JCIS No 0).

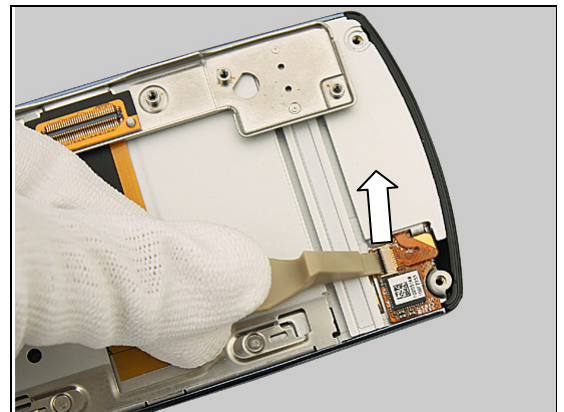


### 3.6 Label Touch Circuit

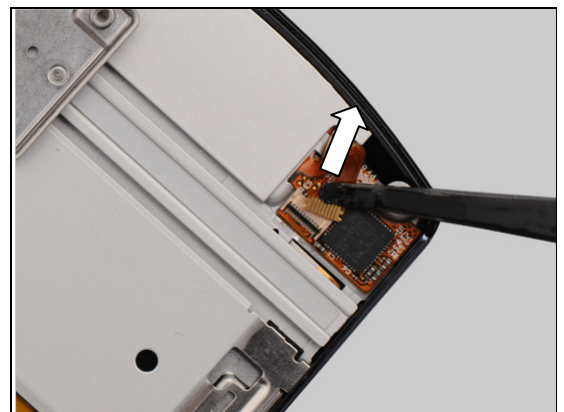
Remove the Label Touch Circuit as shown.



Unsnap the ZIF connector by using a Front Opening Tool,



Release the flex part from the ZIF connector.



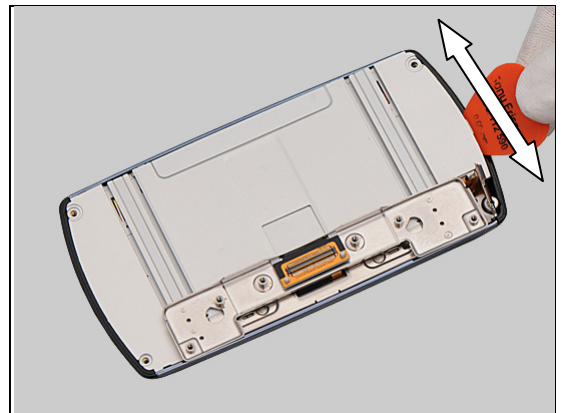
## Disassembly

Pull out flex from the Hinge Assembly



### 3.7 A-Cover

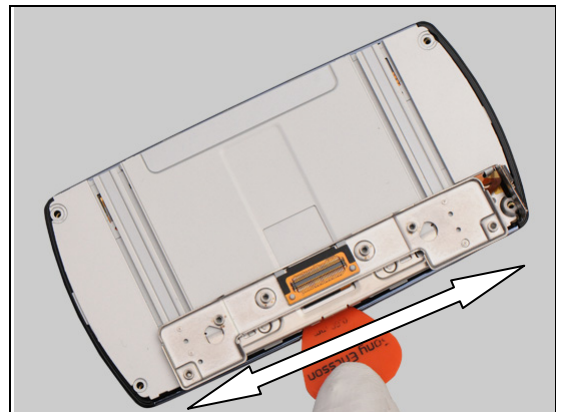
Slide the A-Cover from the top by using a Guitar Pick



Slide the side.



Do the same at the other side.



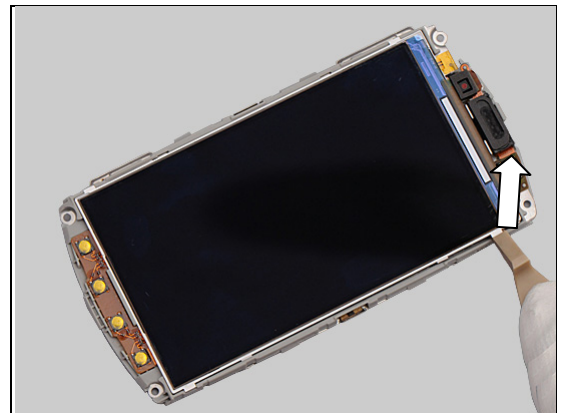
## Disassembly

Separate the A-Cover and the left unit.

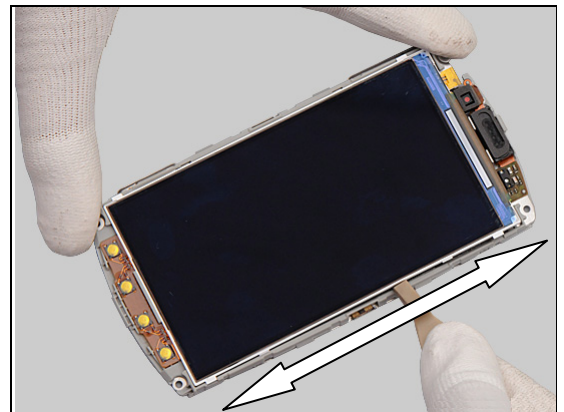


### 3.8 Display

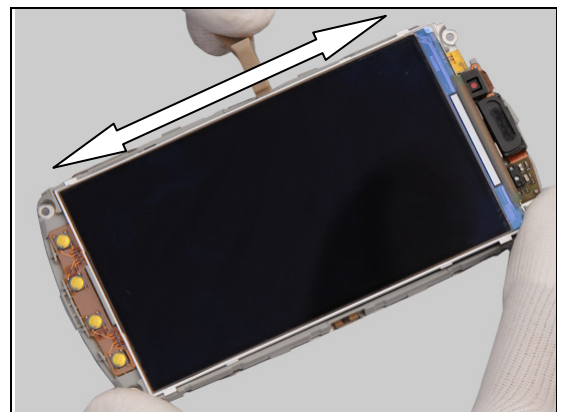
Unsnap the Display by using the Front Opening Tool.



Slide along in the same direction.

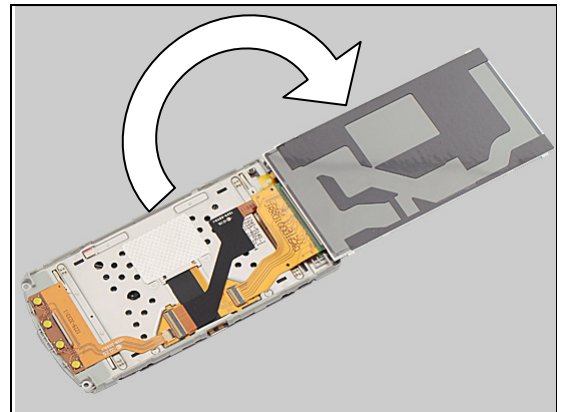


Do the same at the other side.

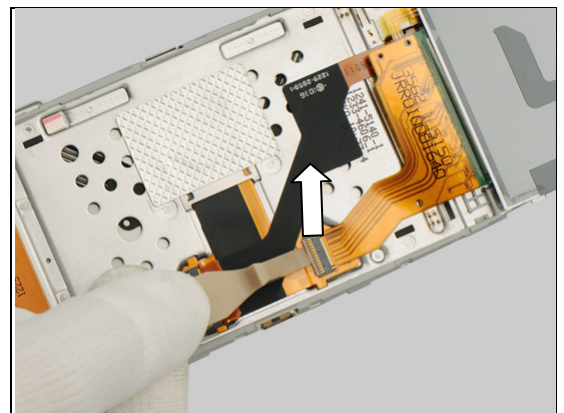


## Disassembly

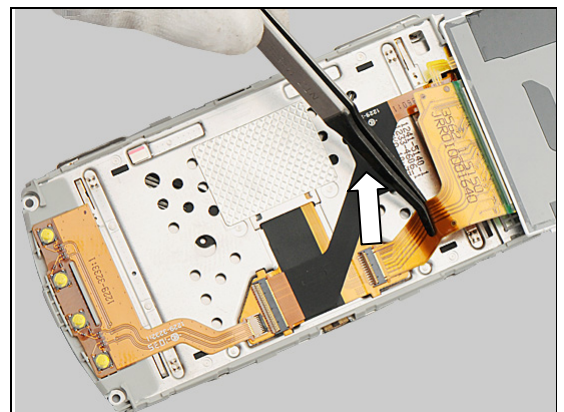
Turn over the Display.



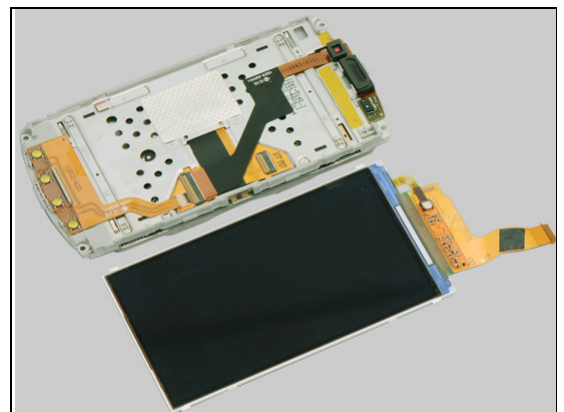
Unsnap the ZIF connector by using a Front Opening Tool



Detach the flex part from the ZIF connector.

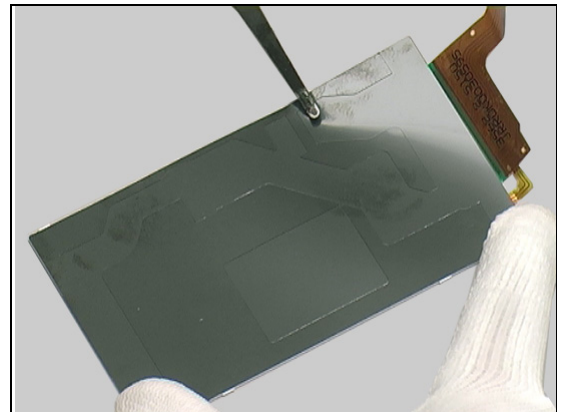


Separate the Display and the left unit.

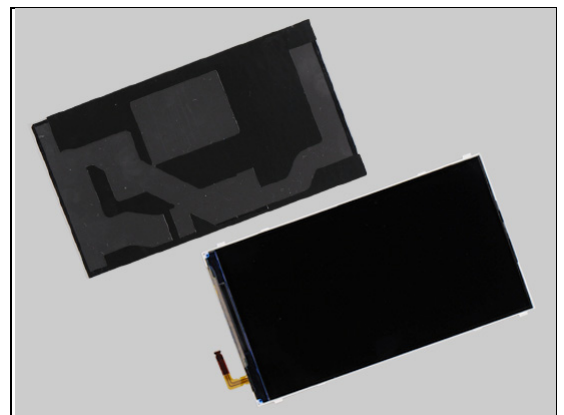


## Disassembly

Detach the Cushion LCD Shim Black by using the flex film assembly tool.



Separate them.







## 4 Replacement

### 4.1 Battery Cover

*Follow the 3.1 Disassembly instructions!*

Prepare the new Battery Cover.

*Follow the 5.8 Reassembly instructions!*



### 4.2 D-Cover

*Follow the 3.1 – 3.3 Disassembly instructions!*

*Follow the 4.9, 4.10, 4.14, 4.25, 4.26, 4.31, 4.39, 4.41, 4.42 Removal instructions!*

Prepare the new D-Cover.

*Follow the 4.9, 4.10, 4.14, 4.25, 4.26, 4.31, 4.39, 4.41, 4.42 Installation instructions!*

*Follow the 5.6 – 5.8 Reassembly instructions!*



### 4.3 PBA Audio Jack FPC

*Follow the 3.1 – 3.4 Disassembly instructions!*

Prepare the new PBA Audio Jack FPC.

*Follow the 5.5 – 5.8 Reassembly instructions!*



### 4.4 C-Cover

*Follow the 3.1 – 3.4 Disassembly instructions!*

*Follow the 4.35, 4.36, 4.37, 4.38, 4.53 Removal instructions!*

Prepare the new C-Cover.

*Follow the 4.35, 4.36, 4.37, 4.38, 4.53 Installation instructions!*

*Follow the 5.5 – 5.8 Reassembly instructions!*



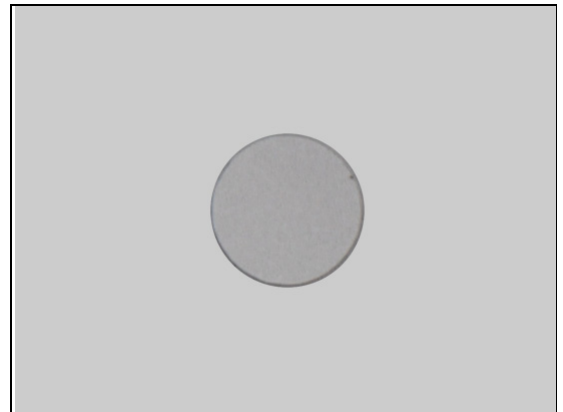
## Replacement

### 4.5 Cap Screw Cover

*Follow the 3.1 – 3.5 Disassembly instructions!*

Prepare the new Cap Screw Cover.

*Follow the 5.4 – 5.8 Reassembly instructions!*



### 4.6 Label Touch Circuit

*Follow the 3.1 – 3.6 Disassembly instructions!*

Prepare the new Label Touch Circuit.

*Follow the 5.3 – 5.8 Reassembly instructions!*



### 4.7 A-Cover

*Follow the 3.1 – 3.7 Disassembly instructions!*

*Follow the 4.40, 4.27 Removal instructions!*

Prepare the new A-Cover.

*Follow the 4.27, 4.40 Installation instructions!*

*Follow the 5.2 – 5.8 Reassembly instructions!*

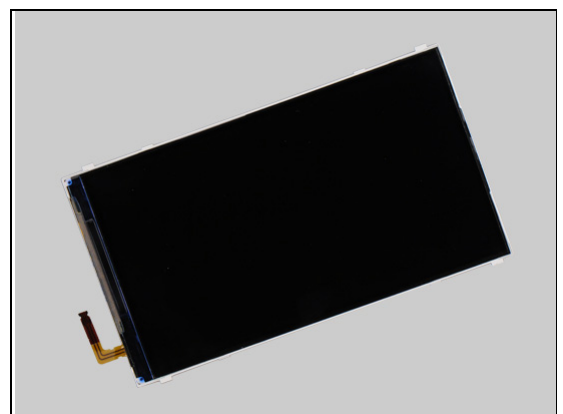


### 4.8 Display

*Follow the 3.1 – 3.8 Disassembly instructions!*

Prepare the new Display.

*Follow the 5.1 – 5.8 Reassembly instructions!*



## Replacement

### 4.9 Ant BT/WLAN

Follow the 3.1 – 3.3 Disassembly instructions!  
Prepare the new Ant BT/WLAN.  
Follow the 5.6 – 5.8 Reassembly instructions!

#### REMOVAL

Detach to remove it.

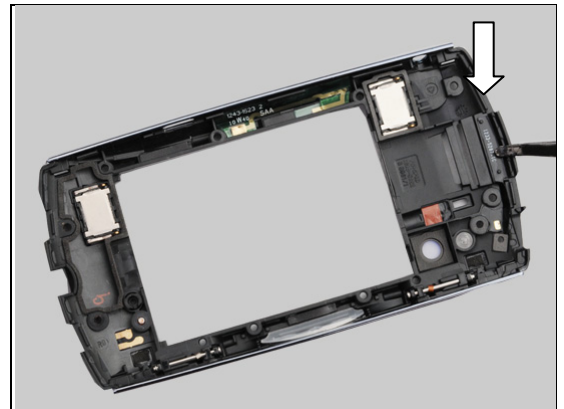
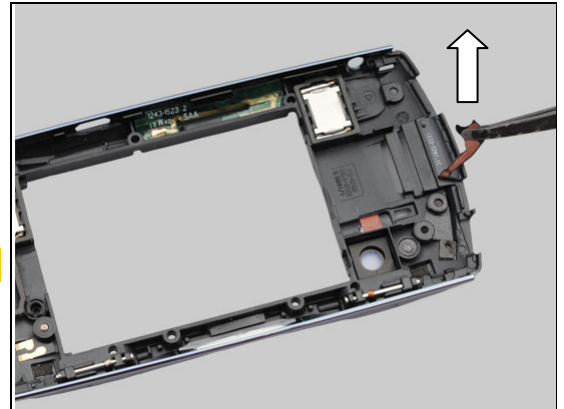
**Scrap! Not to be reused!**

#### INSTALLATION

Place a new Ant BT/WLAN.

**Note the guiding pole!**

Press to attach it.





## Replacement

### 4.10 Ant Main FPC

Follow the 3.1 – 3.3 Disassembly instructions!  
Prepare the new Ant Main FPC.  
Follow the 5.6 – 5.8 Reassembly instructions!

#### REMOVAL

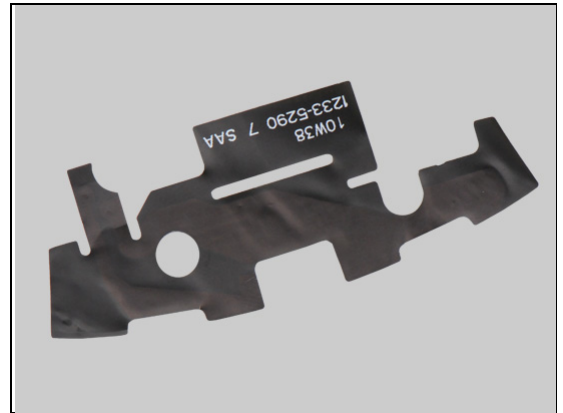
Detach to remove it.

**Scrap! Not to be reused!**

#### INSTALLATION

Place a new Ant Main FPC.

Press to attach it.



## Replacement

### 4.11 Bracket Hinge Plug

*Follow the 3.1 – 3.8 Disassembly instructions!*  
*Follow the 4.20, 4.24 Removal instructions!*  
Prepare the new Bracket Hinge Plug.  
*Follow the 4.24, 4.20 Installation instructions!*  
*Follow the 5.1 – 5.8 Reassembly instructions!*

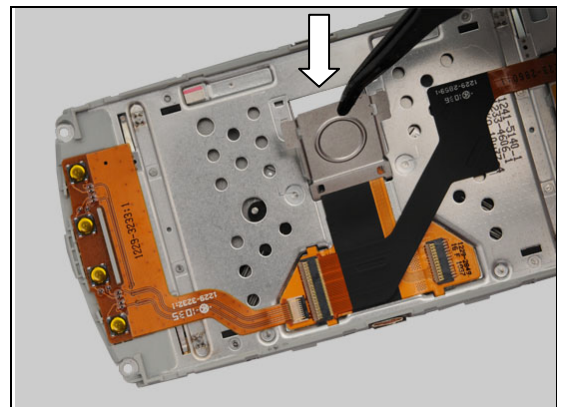
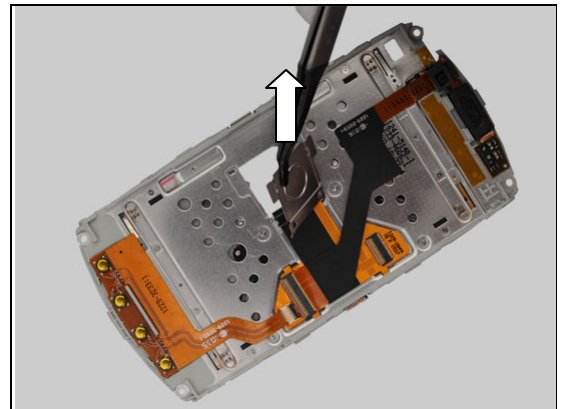
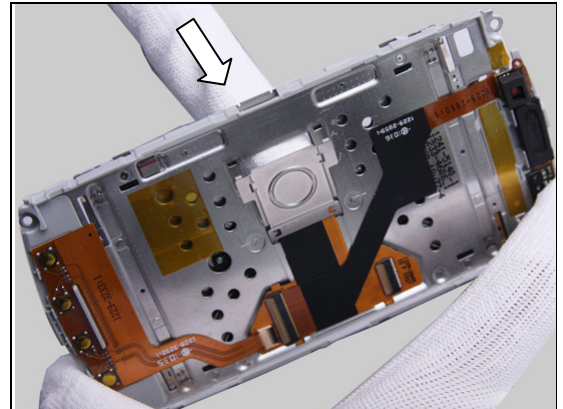
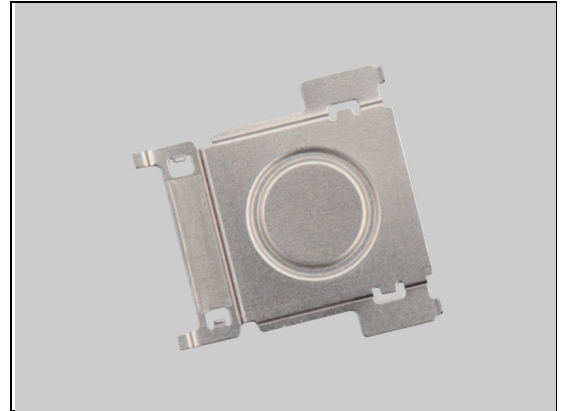
#### REMOVAL

Push against the Bracket Hinge Plug from the back side by fingers.

Detach to remove it.

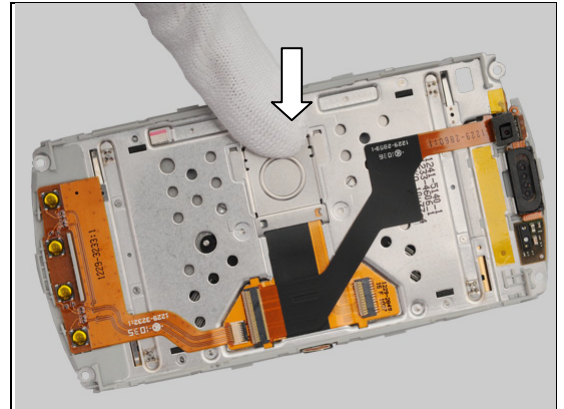
#### INSTALLATION

Insert a new Bracket Hinge Plug into the guiding hole.



## Replacement: Bracket Hinge Plug

Press with the 2 guiding to attach it.



## Replacement

### 4.12 Camera

*Follow the 3.1 – 3.4 Disassembly instructions!*

Prepare the new Camera.

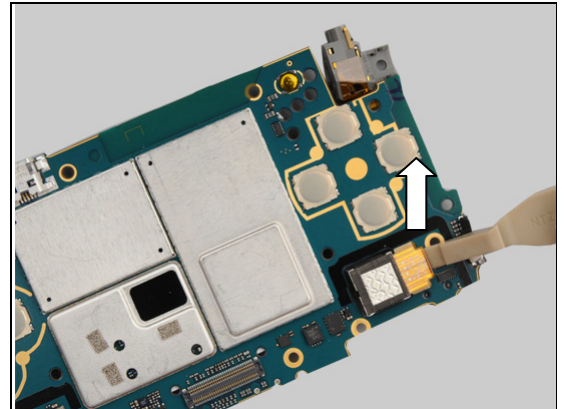
*Follow the 4.24 Installation instructions!*

*Follow the 5.5 – 5.8 Reassembly instructions!*



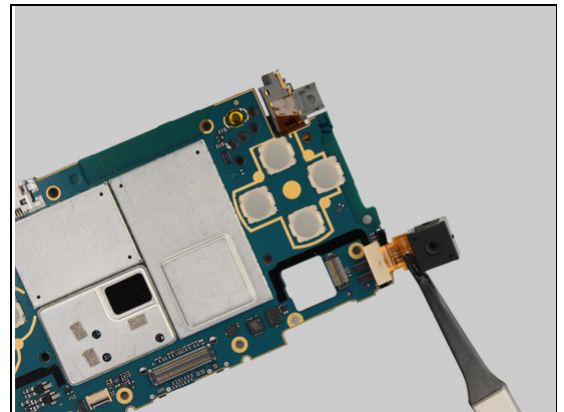
#### REMOVAL

Disconnect the BtB connector by using a Front Opening Tool.

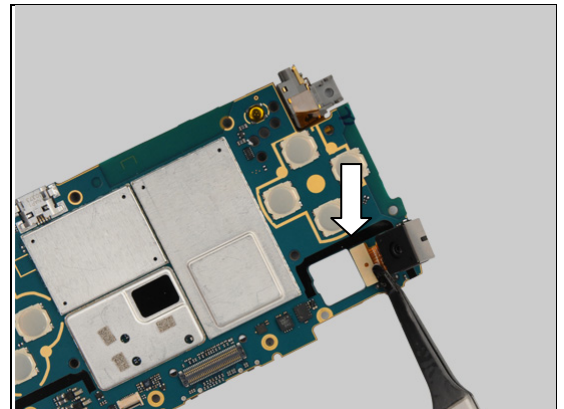


#### INSTALLATION

Place a new Camera in place with proper direction.

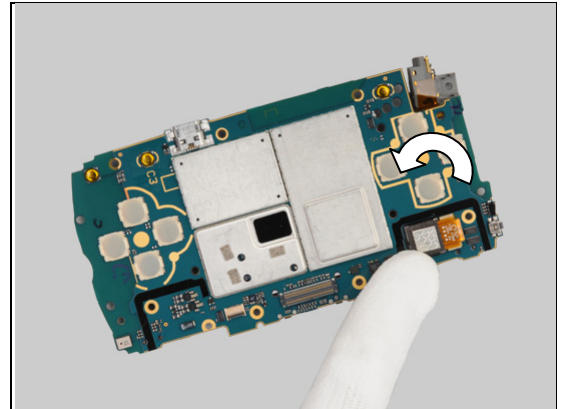


Connect the BtB connector.



## **Replacement: Camera**

Bend the camera into the guiding position.



## Replacement

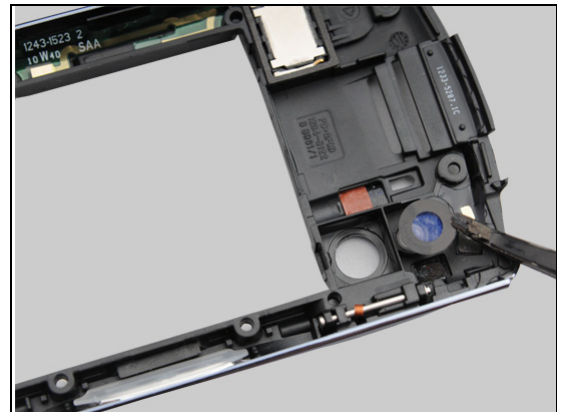
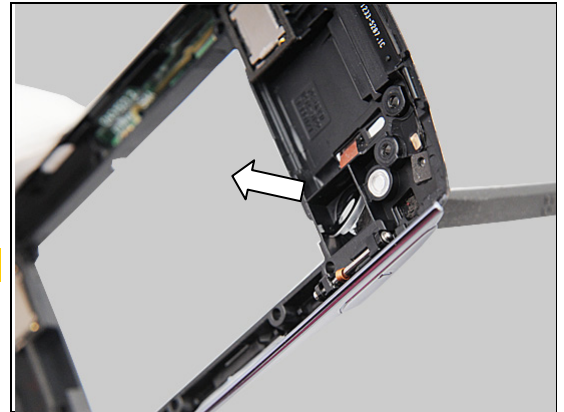
### 4.13 Camera Lens

Follow the 3.1 – 3.3 Disassembly instructions!  
Prepare the new Camera Lens.  
Follow the 5.6 – 5.8 Reassembly instructions!

#### REMOVAL

Push against the Camera Lens by using a Nylon Pointer.

**Scrap! Not to be reused!**



#### INSTALLATION

Place the new Camera Lens.

Press the edge to make sure it is securely attached.





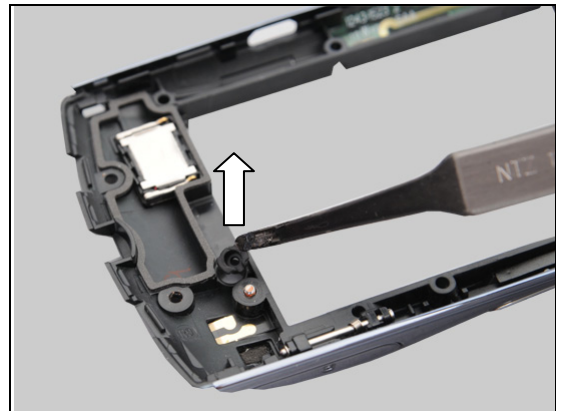
## Replacement

### 4.14 Cap Antenna Port Plug

*Follow the 3.1 – 3.3 Disassembly instructions!*  
Prepare the new Cap Antenna Port Plug.  
*Follow the 5.6 – 5.8 Reassembly instructions!*

#### REMOVAL

Pull the Cap Antenna Port Plug by using a pair of Tweezers.



#### INSTALLATION

Place a new Cap Antenna Port Plug to the hole.



Press to assure its position.



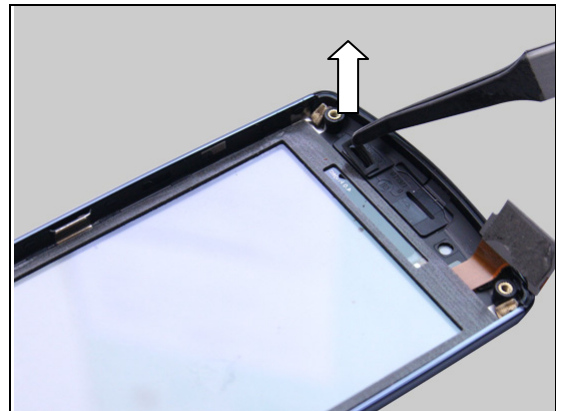
# Replacement

## 4.15 Cap Proximity Grommet

*Follow the 3.1 – 3.7 Disassembly instructions!*  
Prepare the new Cap Proximity Grommet.  
*Follow the 5.7 – 5.8 Reassembly instructions!*

### REMOVAL

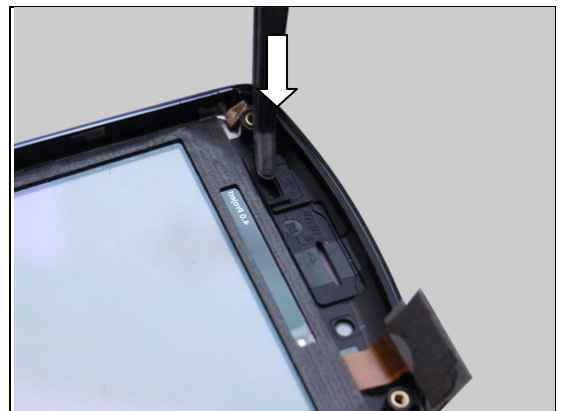
Detach it by using the flex film assembly tool.



### INSTALLATION

Place a new Cap Proximity Grommet to the hole.

Press to assure its position.





## Replacement

### 4.16 Conductive Hinge Plug

*Follow the 3.1 – 3.8 Disassembly instructions!*  
Prepare the new Conductive Hinge Plug.  
*Follow the 5.1 – 5.8 Reassembly instructions!*

#### REMOVAL

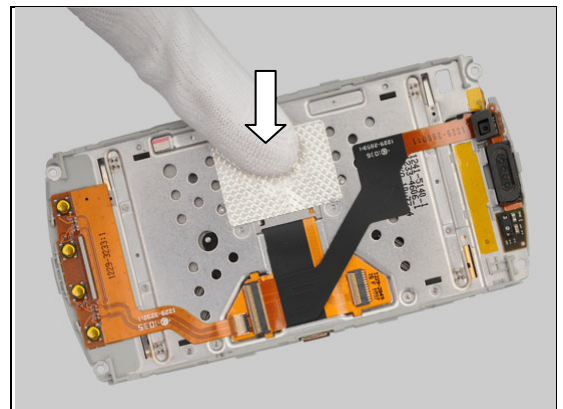
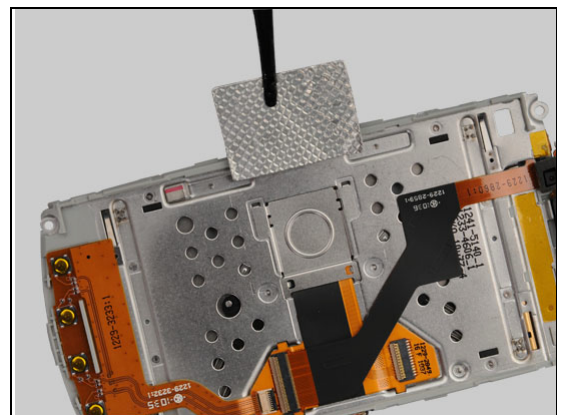
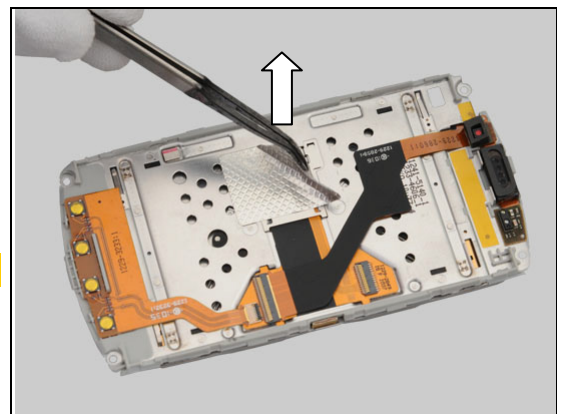
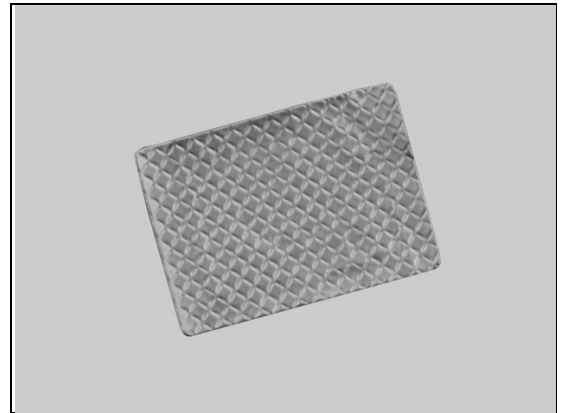
Peer off it by using the Tweezers.

**Scrap! Not to be reused!**

#### INSTALLATION

Place a new Conductive Hinge Plug.

Press to attach it.



## Replacement

### 4.17 Core Unit Label

Follow the 3.1 – 3.2 Disassembly instructions!  
Prepare the new Cap Screw Cover.  
Follow the 5.7 – 5.8 Reassembly instructions!

#### REMOVAL

Read the old Core Unit Label and write the information into the 'LabelMake' program.

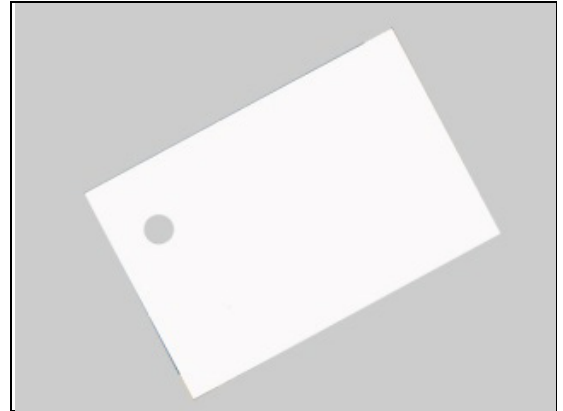
Remove the Label carefully.

**Scrap! Not to be reused!**

#### INSTALLATION

Check that the label format is properly loaded in the Zebra printer and write a new Label by using the 'Label Make' software.

**One label only is allowed!**



## Replacement: Core Unit Label

Press the new Core Unit Label onto the Main PBA.



## Replacement

### 4.18 Cover Plastic SIM Card plug-CDMA

Follow the 3.1 Disassembly instructions!  
Prepare the new Cover Plastic SIM Card plug.  
Follow the 5.8 Reassembly instructions!

**Apply to CDMA phone only!**

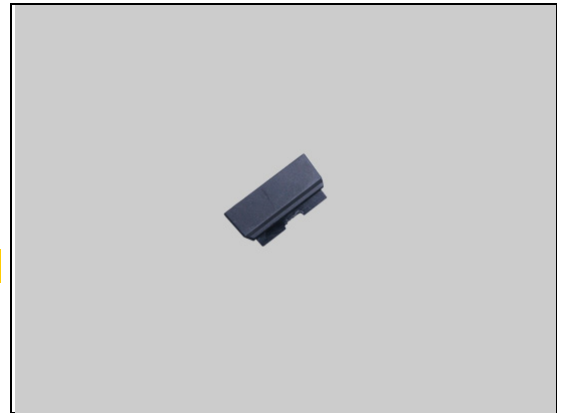
#### REMOVAL

Detach it by using a guitar pick.

#### INSTALLATION

Place a new Cover Plastic SIM Card plug.

Press to assure its position.



## Replacement

### 4.19 Cushion LCD Shim Black

*Follow the 3.1 – 3.8 Disassembly instructions!*  
Prepare the new Cushion LCD Shim Black.  
*Follow the 5.1 – 5.8 Reassembly instructions!*

#### REMOVAL

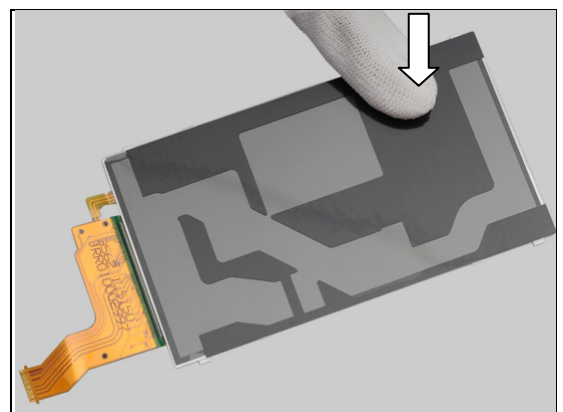
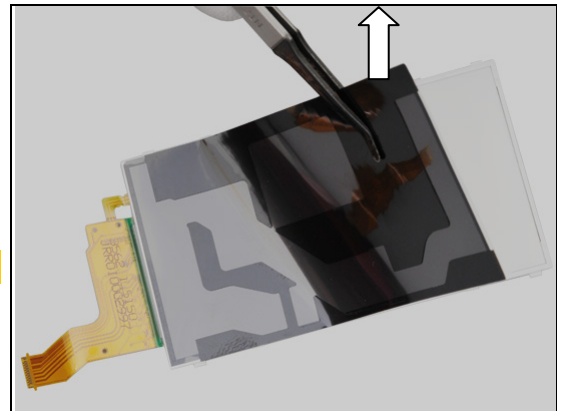
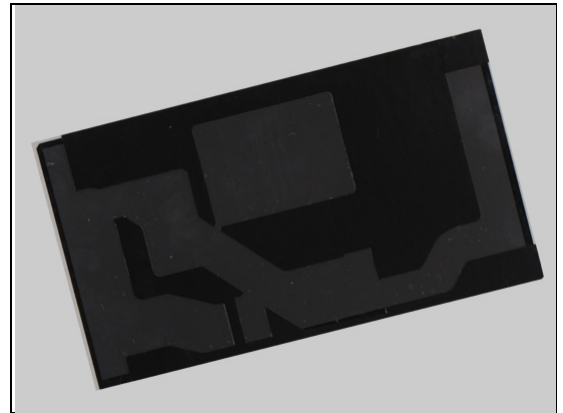
Peer off it by using the Flex Film Assembly Tool.

**Scrap! Not to be reused!**

#### INSTALLATION

Place a new Cushion LCD Shim Black.

Press to attach it.







## Replacement

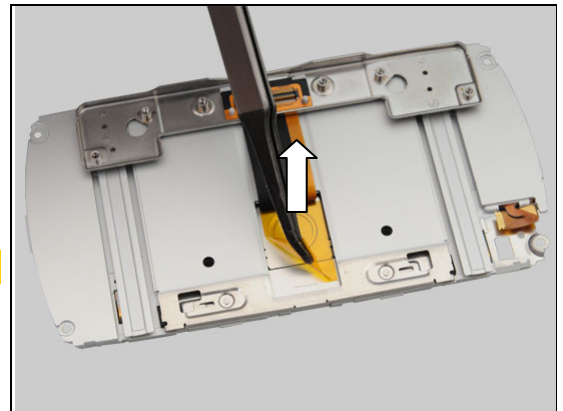
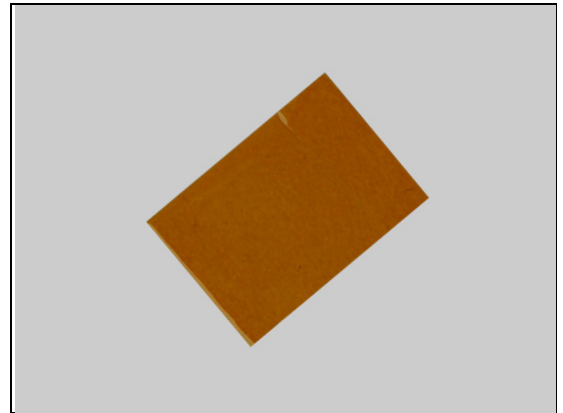
### 4.20 Foil 0.0 mm Tape, Hinge Plug

*Follow the 3.1 – 3.8 Disassembly instructions!*  
Prepare the new Foil 0.0 mm Tape, Hinge Plug.  
*Follow the 5.1 – 5.8 Reassembly instructions!*

#### REMOVAL

Peer off it by using the Tweezers.

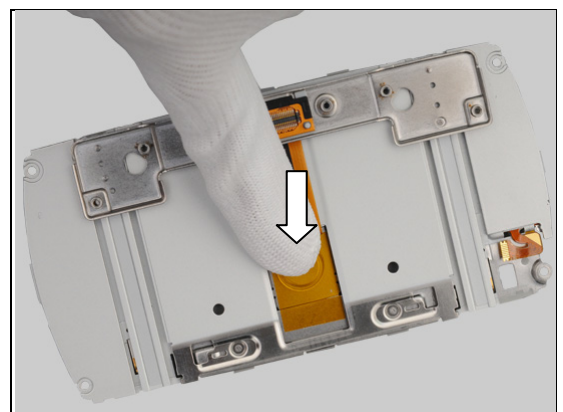
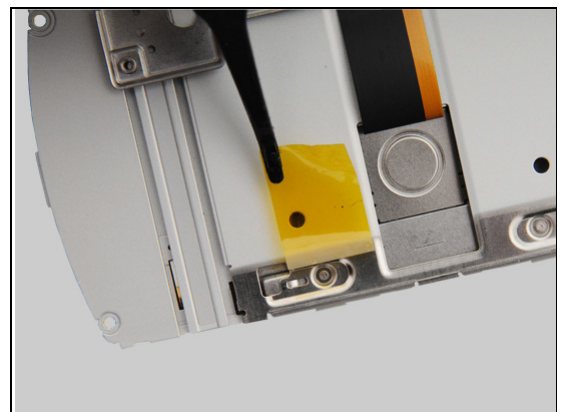
**Scrap! Not to be reused!**



#### INSTALLATION

Place a new Foil 0.0 mm Tape Hinge Plug lying the guiding line.

Press to attach it.



## Replacement

### 4.21 Foil Adhesive conductive

*Follow the 3.1 – 3.3 Disassembly instructions!*

*Follow the 4.48 Removal instructions!*

Prepare the new Foil Adhesive conductive.

*Follow the 4.48 Installation instructions!*

*Follow the 5.6 – 5.8 Reassembly instructions!*

#### REMOVAL

Peer off it by using the Flex Film Assembly Tool.

**Scrap! Not to be reused!**

#### INSTALLATION

Place a new Foil Adhesive conductive.

Press to attach it.



## Replacement

### 4.22 Foil Adhesive ESD

*Follow the 3.1 Disassembly instructions!*  
 Prepare the new Foil Adhesive ESD.  
*Follow the 5.8 Reassembly instructions!*

#### REMOVAL

Peer off it by using the Flex Film Assembly Tool.

**Scrap! Not to be reused!**

#### INSTALLATION

Place a new Foil Adhesive ESD.

Press to attach it.





## Replacement

### 4.23 Foil Adhesive Touch Flex

*Follow the 3.1 – 3.6 Disassembly instructions!*  
Prepare the new Foil Adhesive Touch Flex.  
*Follow the 5.3 – 5.8 Reassembly instructions!*

#### REMOVAL

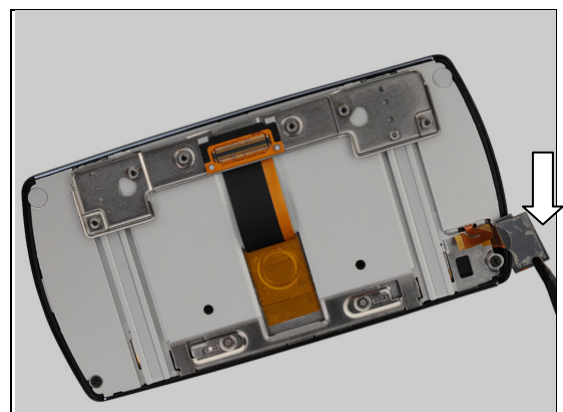
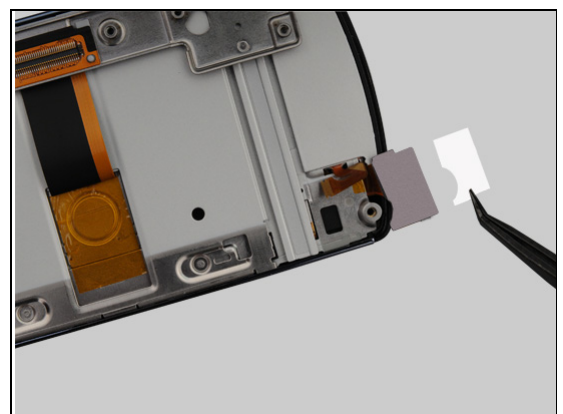
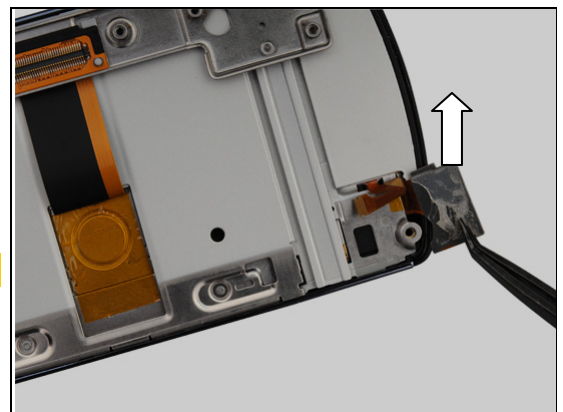
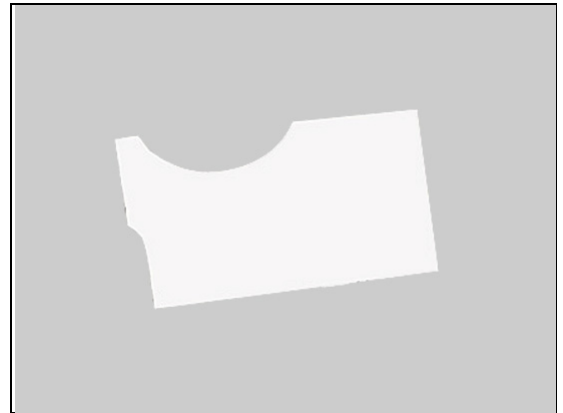
Peer off it by using the Flex Film Assembly Tool.

**Scrap! Not to be reused!**

#### INSTALLATION

Place a new Foil Adhesive Touch Flex.

Press to attach it.



## Replacement

### 4.24 Foil Grounding Camera

*Follow the 3.1 – 3.4 Disassembly instructions!*  
*Follow the 4.12 Removal instructions!*  
Prepare the new Foil Grounding Camera.  
*Follow the 4.12 Installation instructions!*  
*Follow the 5.5 – 5.8 Reassembly instructions!*

#### REMOVAL

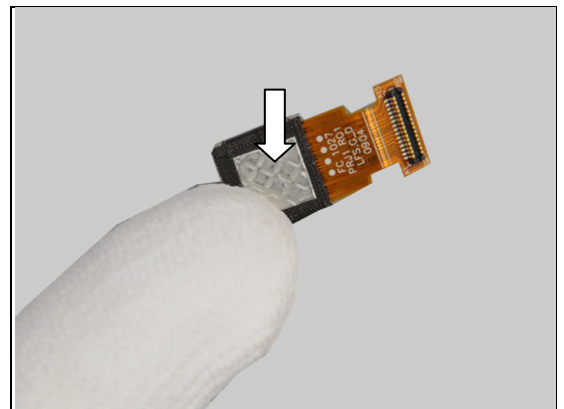
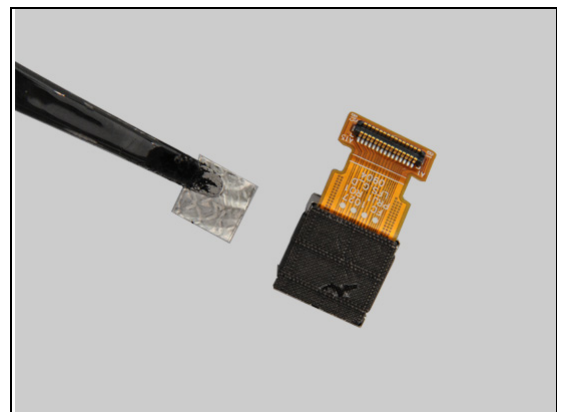
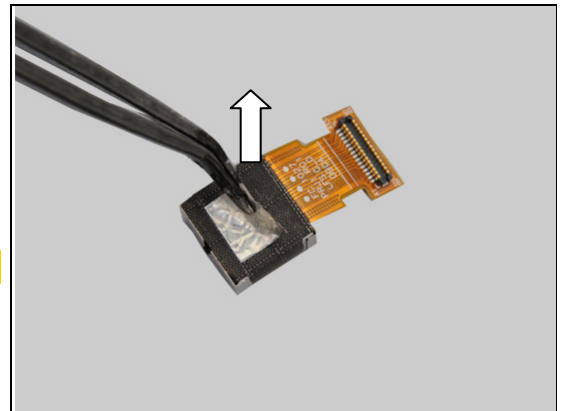
Peer off it by using the Flex Film Assembly Tool.

**Scrap! Not to be reused!**

#### INSTALLATION

Place a new Foil Grounding Camera.

Press to attach it.



## Replacement

### 4.25 FPC Zeus GPS Antenna

*Follow the 3.1 – 3.3 Disassembly instructions!*  
Prepare the new FPC Zeus GPS Antenna.  
*Follow the 5.6 – 5.8 Reassembly instructions!*

#### REMOVAL

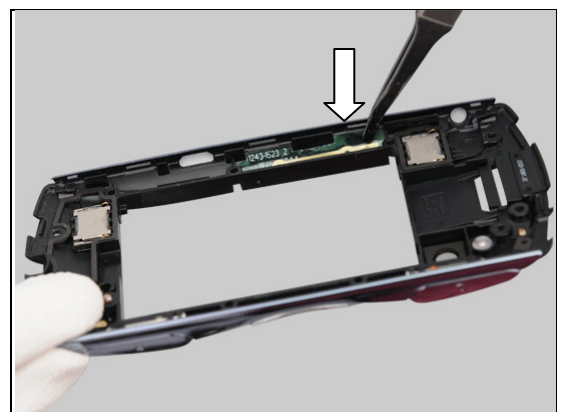
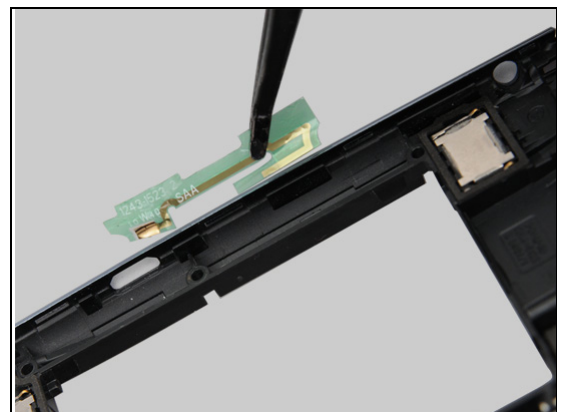
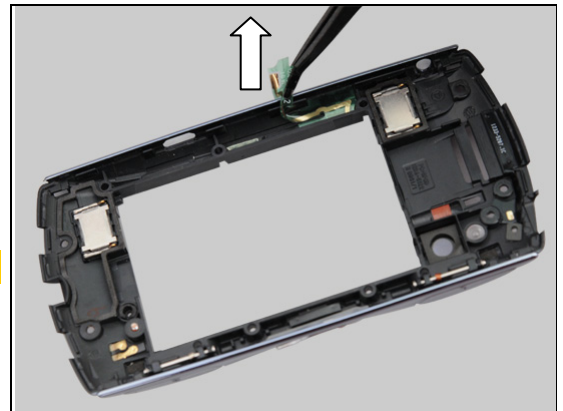
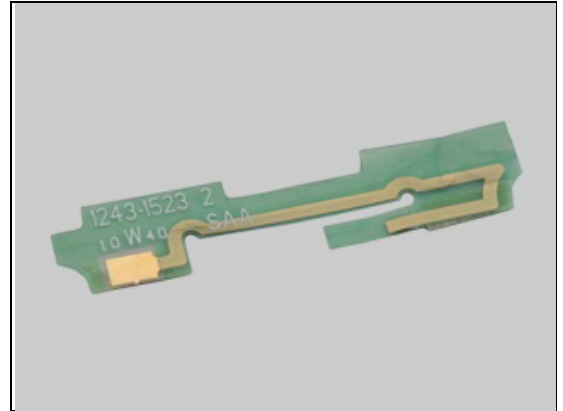
Remove by using the Flex Film Assembly Tool.

**Scrap! Not to be reused!**

#### INSTALLATION

Place a new FPC Zeus GPS Antenna align the guiding.

Press to assure the attachment.



## Replacement

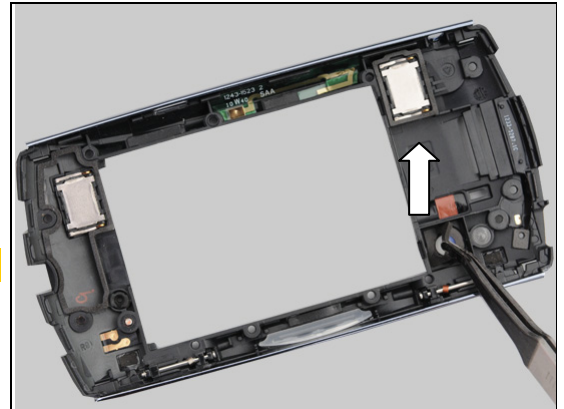
### 4.26 Gasket Camera

Follow the 3.1 – 3.3 Disassembly instructions!  
Prepare the new Gasket Camera.  
Follow the 5.6 – 5.8 Reassembly instructions!

#### REMOVAL

Peer off it by using the Tweezers.

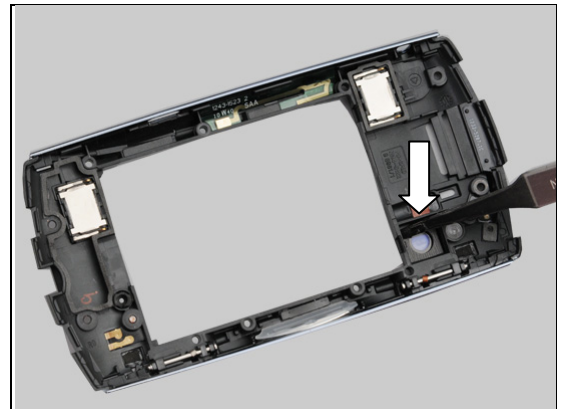
**Scrap! Not to be reused!**



#### INSTALLATION

Place a new Gasket Camera.

Press to attach it.



## Replacement

### 4.27 Gasket Conductive 1 Golden

*Follow the 3.1 – 3.7 Disassembly instructions!*  
Prepare the new Gasket Conductive 1 Golden.  
*Follow the 5.2 – 5.8 Reassembly instructions!*

#### REMOVAL

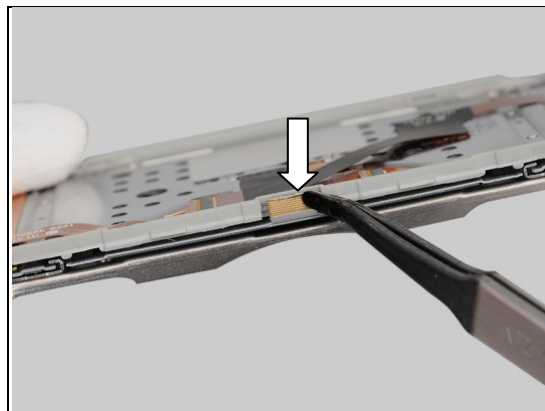
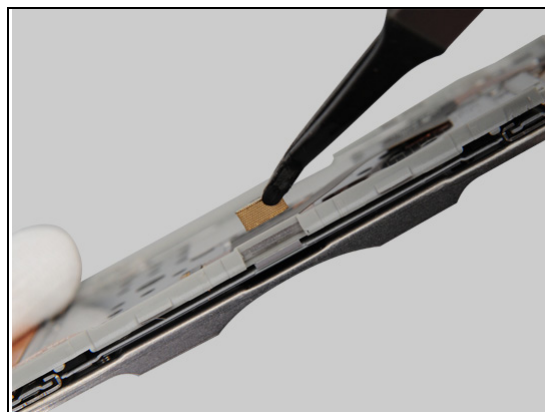
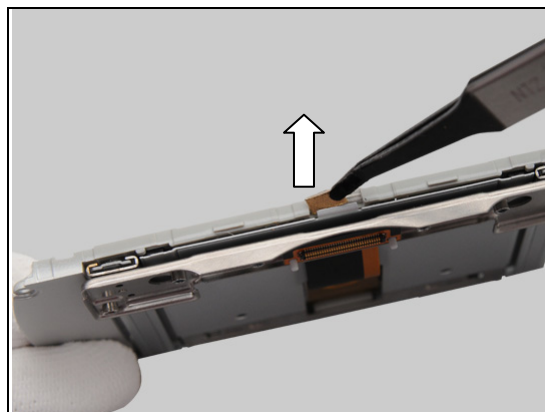
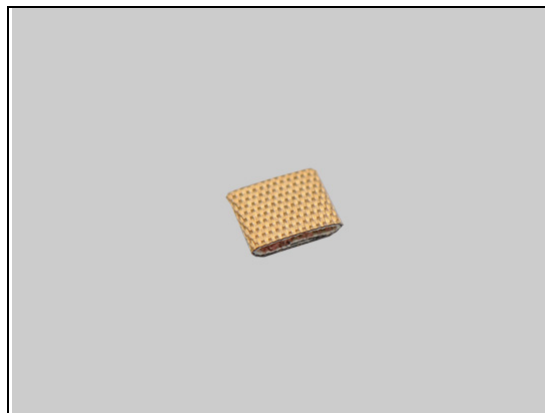
Peer off it by using the Tweezers.

**Scrap! Not to be reused!**

#### INSTALLATION

Place a new Gasket Conductive 1 Golden.

Press to attach it.







## Replacement

### 4.28 Gasket Conductive 2 Golden

*Follow the 3.1 – 3.7 Disassembly instructions!*  
Prepare the new Gasket Conductive 2 Golden.  
*Follow the 5.2 – 5.8 Reassembly instructions!*

#### REMOVAL

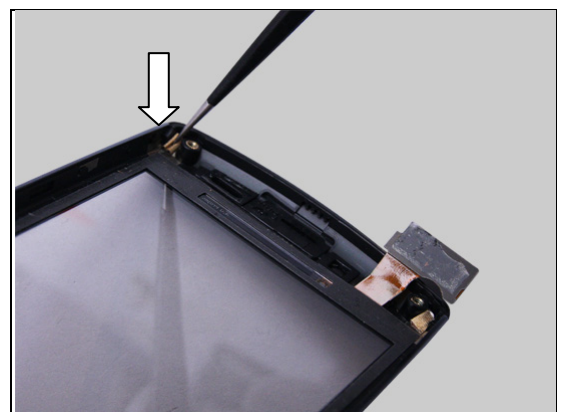
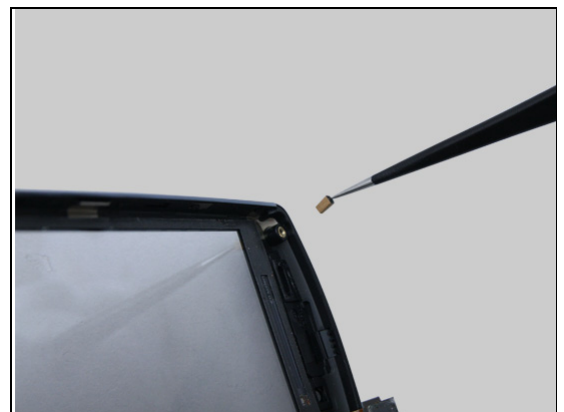
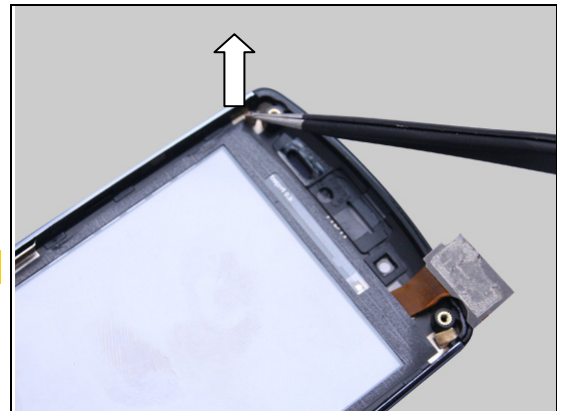
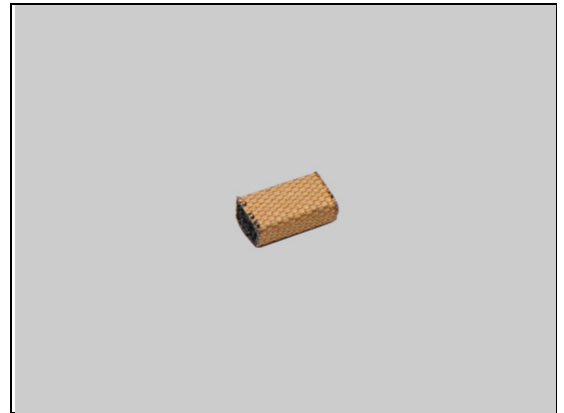
Peer off it by using the Tweezers.

**Scrap! Not to be reused!**

#### INSTALLATION

Place a new Gasket Conductive 2 Golden.

Press to attach it.



## Replacement

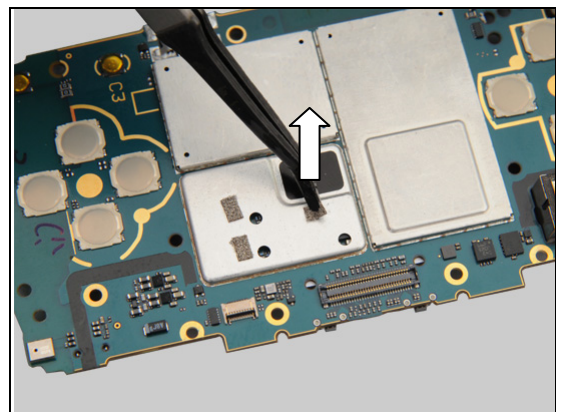
### 4.29 Gasket Conductive 3,8x2,3

*Follow the 3.1 – 3.4 Disassembly instructions!*  
Prepare the new Gasket Conductive 3,8x2,3.  
*Follow the 5.5 – 5.8 Reassembly instructions!*

#### REMOVAL

Peer off it by using the Tweezers.

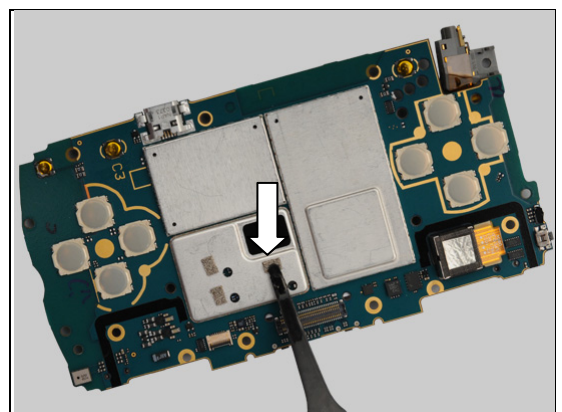
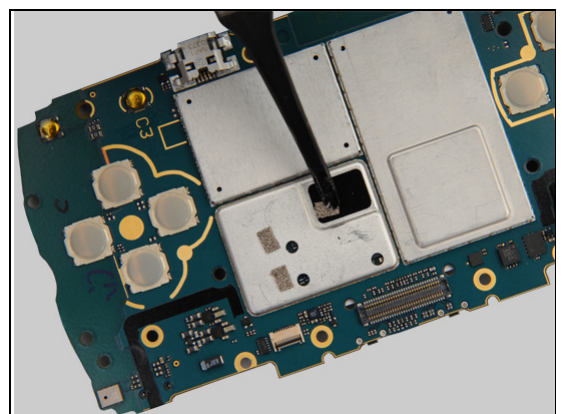
**Scrap! Not to be reused!**



#### INSTALLATION

Place a new Gasket Conductive 3,8x2,3.

Press to attach it.





## Replacement

### 4.30 Gasket Home Key

Follow the 3.1 – 3.4 Disassembly instructions!  
Prepare the new Gasket Home Key.  
Follow the 5.5 – 5.8 Reassembly instructions!

#### REMOVAL

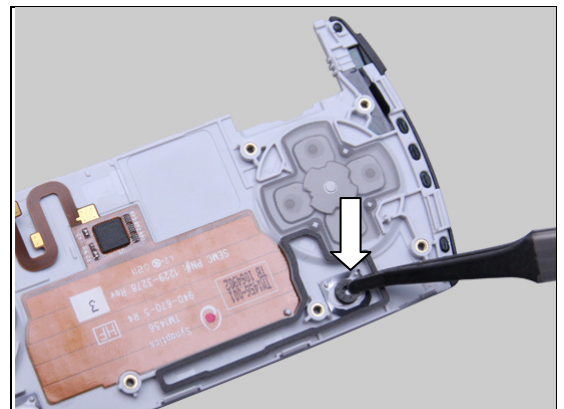
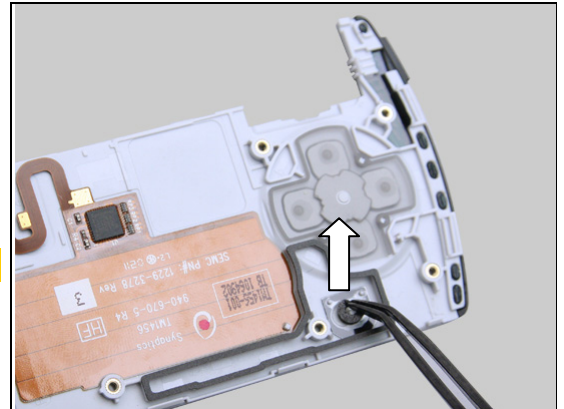
Peer off it by using the flex film assembly tool.

**Scrap! Not to be reused!**

#### INSTALLATION

Place a new Gasket Home Key.

Press to attach it.



## Replacement

### 4.31 Gasket Speaker, Left

Follow the 3.1 – 3.3 Disassembly instructions!  
Prepare the new Gasket Speaker, Left.  
Follow the 5.6 – 5.8 Reassembly instructions!

#### REMOVAL

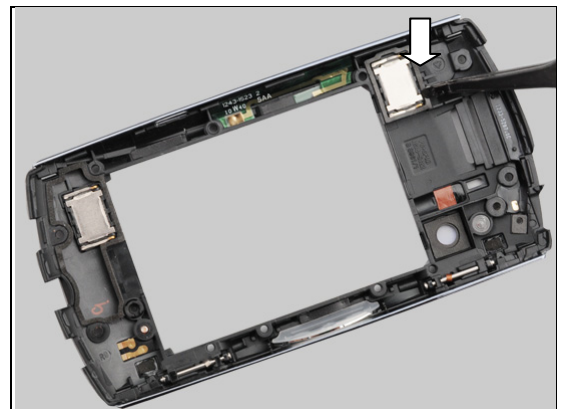
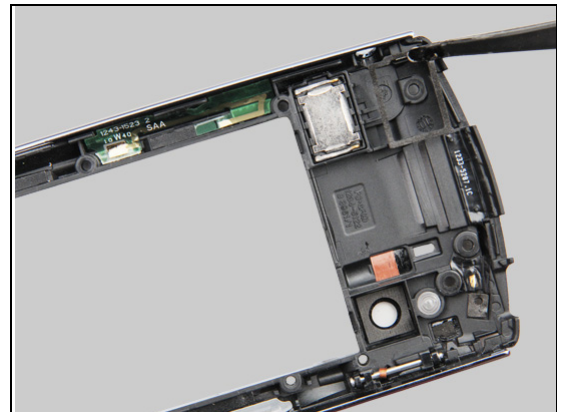
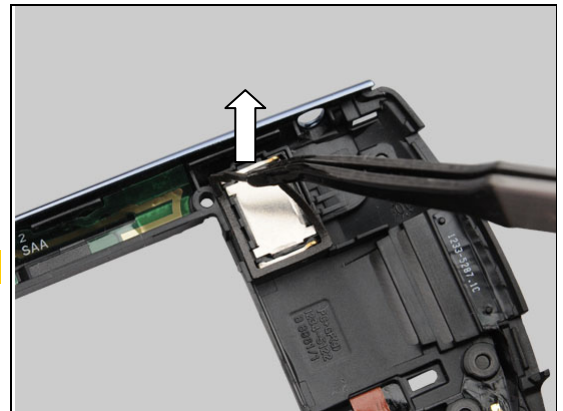
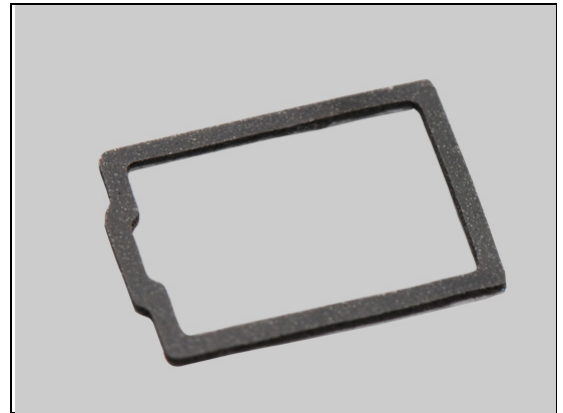
Peer off it by using the Flex Film Assembly Tool.

**Scrap! Not to be reused!**

#### INSTALLATION

Place a new Gasket Speaker, Left.

Press to attach it.



## Replacement

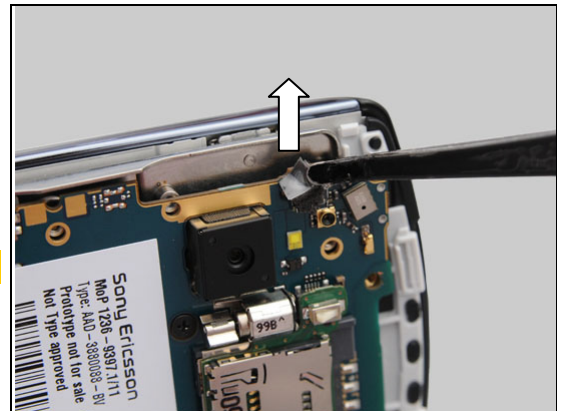
### 4.32 Gasket Trigger switch gasket

Follow the 3.1 – 3.3 Disassembly instructions!  
Prepare the new Gasket Trigger switch gasket.  
Follow the 5.6 – 5.8 Reassembly instructions!

#### REMOVAL

Peer off it by using the Flex Film Assembly Tool.

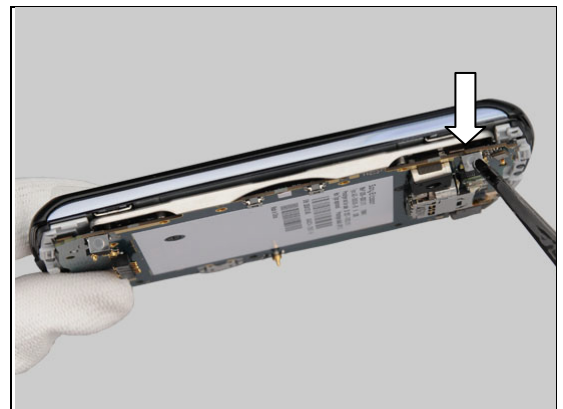
**Scrap! Not to be reused!**



#### INSTALLATION

Place a new Gasket Trigger switch gasket.

Press both the side and top to attach it.





## Replacement

### 4.33 Gasket VT

*Follow the 3.1 – 3.7 Disassembly instructions!*  
Prepare the new Gasket VT.  
*Follow the 5.2 – 5.8 Reassembly instructions!*

#### REMOVAL

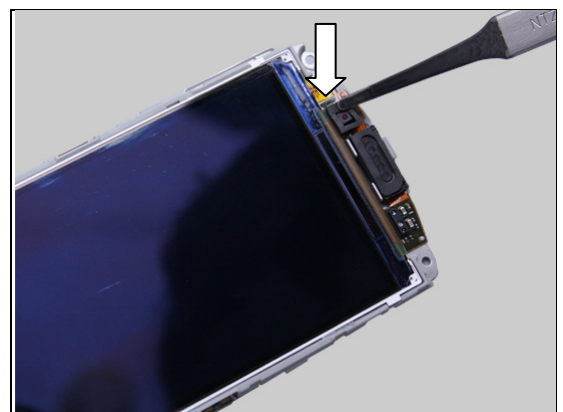
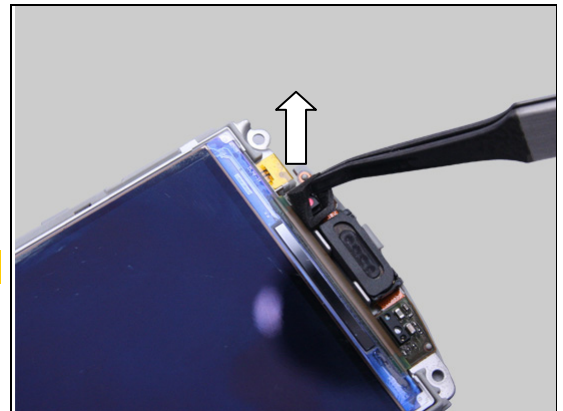
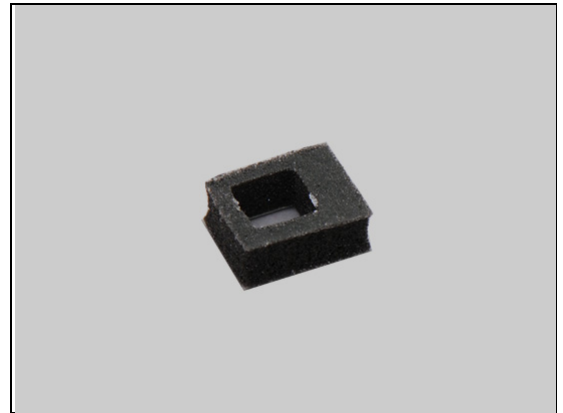
Peer off it by using the Flex Film Assembly Tool.

**Scrap! Not to be reused!**

#### INSTALLATION

Place a new Gasket VT.

Press to attach it.



## Replacement

### 4.34 B-Cover

*Follow the 3.1 – 3.8 Disassembly instructions!*

*Follow the 4.11, 4.16, 4.20, 4.43, 4.45, 4.46, 4.48  
Removal instructions!*

Prepare the new B-Cover.

*Follow the 4.48, 4.46, 4.45, 4.43, 4.20, 4.16, 4.11  
Installation instructions!*

*Follow the 5.1 – 5.8 Reassembly instructions!*



## Replacement

### 4.35 Key 4

*Follow the 3.1 – 3.4 Disassembly instructions!*  
Prepare the new Key 4.  
*Follow the 5.5 – 5.8 Reassembly instructions!*

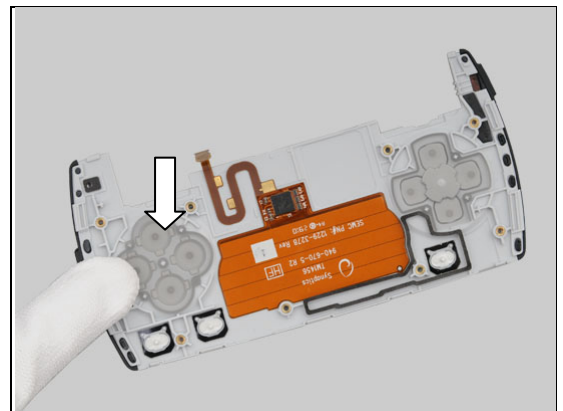
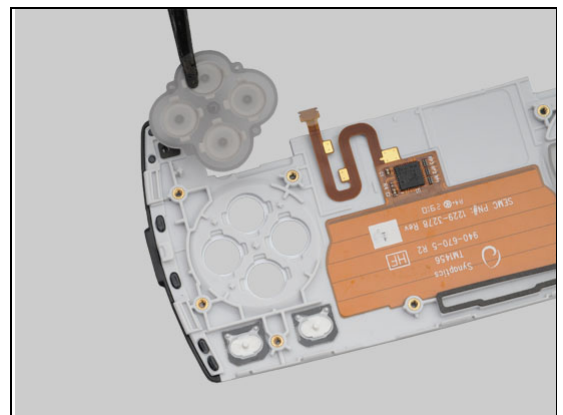
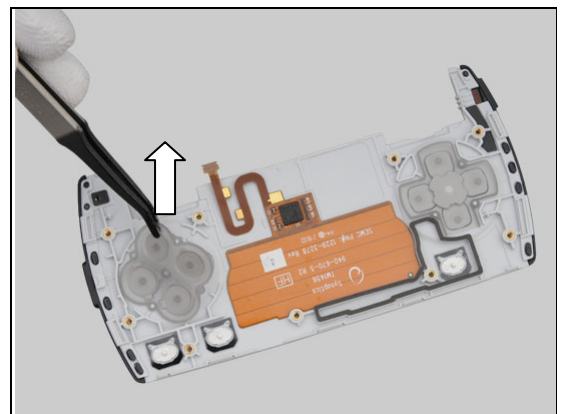
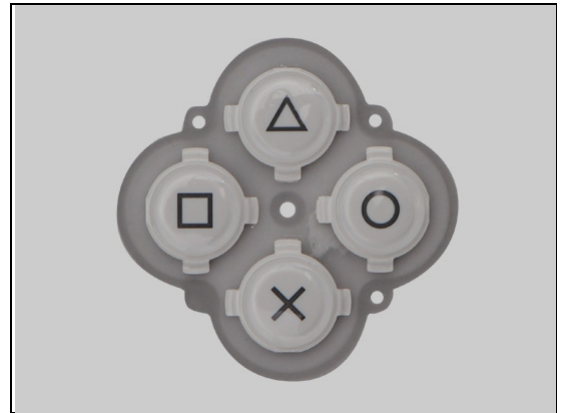
#### REMOVAL

Detach it by using the Flex Film Assembly Tool.

#### INSTALLATION

Place a new Key 4.

Align the key by using three guiding pins as shown.



## Replacement

### 4.36 Key Direction

*Follow the 3.1 – 3.4 Disassembly instructions!*  
 Prepare the new Key Direction.  
*Follow the 5.5 – 5.8 Reassembly instructions!*

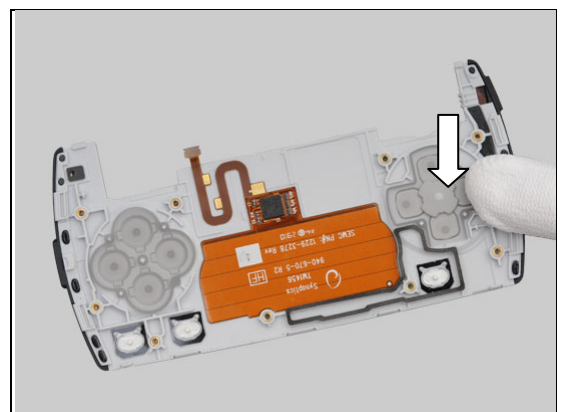
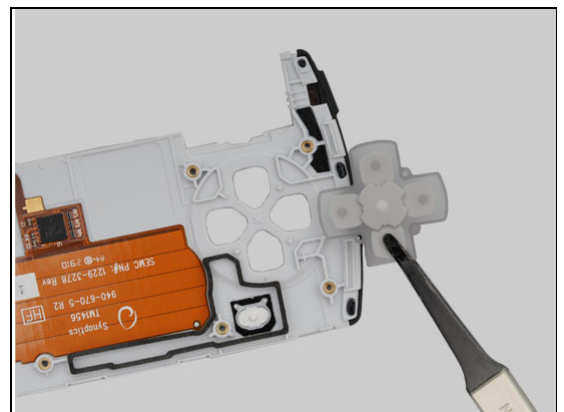
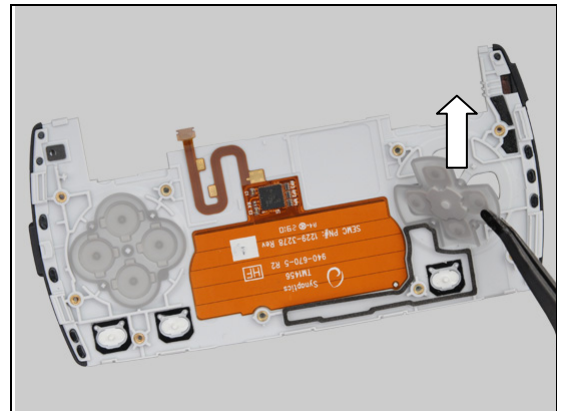
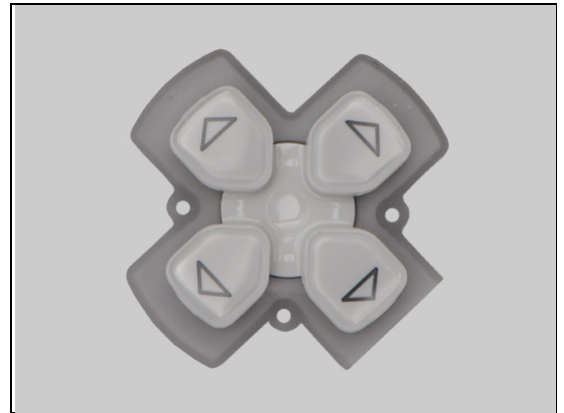
#### REMOVAL

Detach it by using the Flex Film Assembly Tool.

#### INSTALLATION

Place a new Key Direction.

Align the key by using three guiding pins as shown.





## Replacement

### 4.37 Key Power

*Follow the 3.1 – 3.3 Disassembly instructions!*  
Prepare the new Key Power.  
*Follow the 5.6 – 5.8 Reassembly instructions!*





## Replacement

### 4.38 Key SSH

Follow the 3.1 – 3.4 Disassembly instructions!  
Prepare the new Key SSH.  
Follow the 5.5 – 5.8 Reassembly instructions!

#### REMOVAL

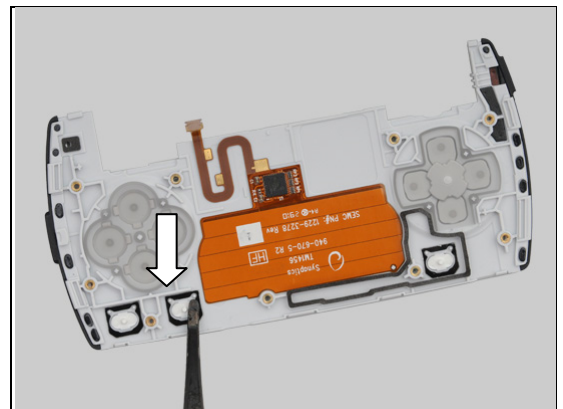
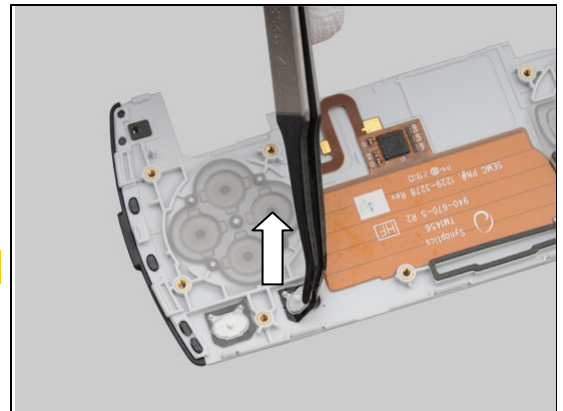
Detach it by using the Flex Film Assembly Tool.

**Scrap! Not to be reused!**

#### INSTALLATION

Place a new Key SSH.

Align the key by using two guiding pins as shown.



## Replacement

### 4.39 Key Volume

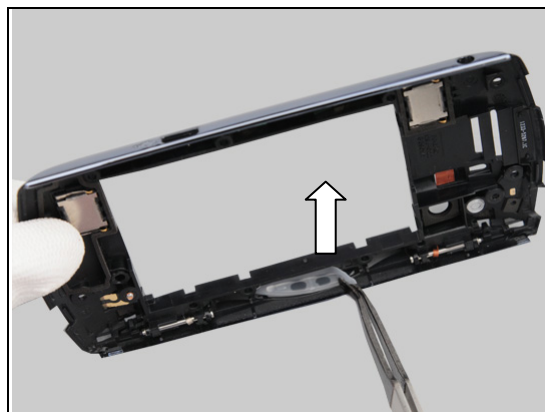
*Follow the 3.1 – 3.3 Disassembly instructions!*

Prepare the new Key Volume.

*Follow the 5.6 – 5.8 Reassembly instructions!*

#### REMOVAL

Detach it by using the Flex Film Assembly Tool.

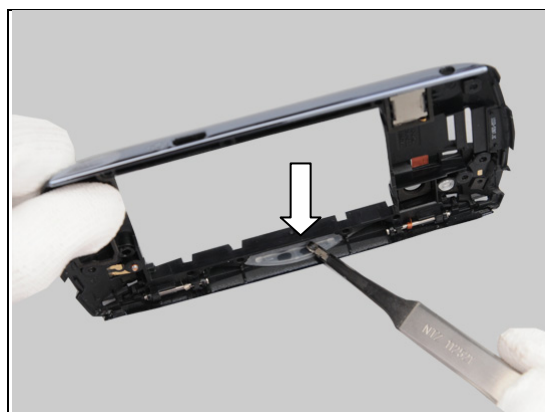


#### INSTALLATION

Place a new Key Volume.



Press to assure its position by fingers.





## Replacement

### 4.40 Keyboard Navigation

*Follow the 3.1 – 3.7 Disassembly instructions!*  
Prepare the new Keyboard Navigation.  
*Follow the 5.2 – 5.8 Reassembly instructions!*

#### REMOVAL

Detach it by using the Flex Film Assembly Tool.



#### INSTALLATION

Place a new Keyboard Navigation.



Align the key by using two guiding pins and press.



## Replacement

### 4.41 Water Indicator Foil 0.34 mm

*Follow the 3.1 – 3.3 Disassembly instructions!*  
Prepare the new Liquid Intrusion.  
*Follow the 5.6 – 5.8 Reassembly instructions!*

#### REMOVAL

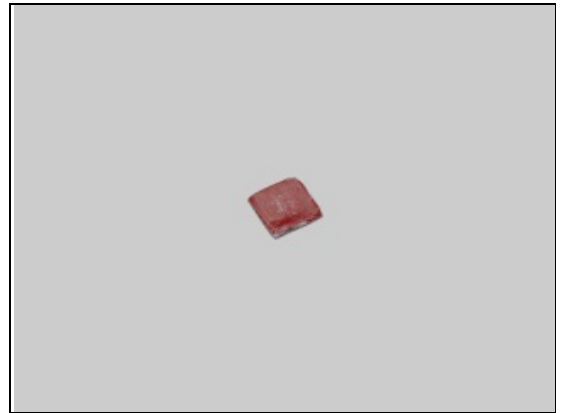
Push it through the hole by using a pair of tweezers.

**Scrap! Not to be reused!**

#### INSTALLATION

Place a new Liquid Intrusion.

Press to assure its position.



## Replacement

### 4.42 Loudspeaker & Foil 0.0 mm Speaker adhesive

Follow the 3.1 – 3.3 Disassembly instructions!  
Prepare the new Loudspeaker & Foil 0.0 mm Speaker adhesive.  
Follow the 5.6 – 5.8 Reassembly instructions!

#### REMOVAL

Detach it by using the Flex Film Assembly Tool.

**Scrap! Foil 0.0 mm Speaker adhesive is not to be reused!**

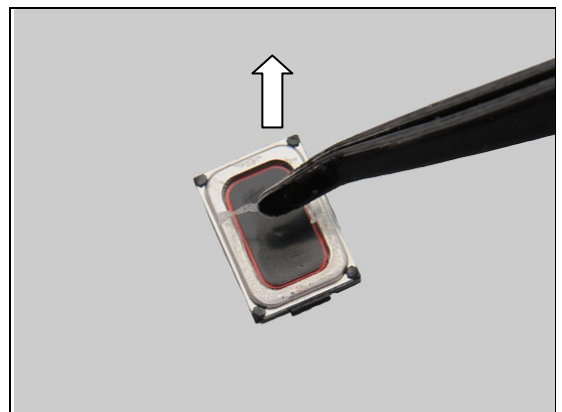
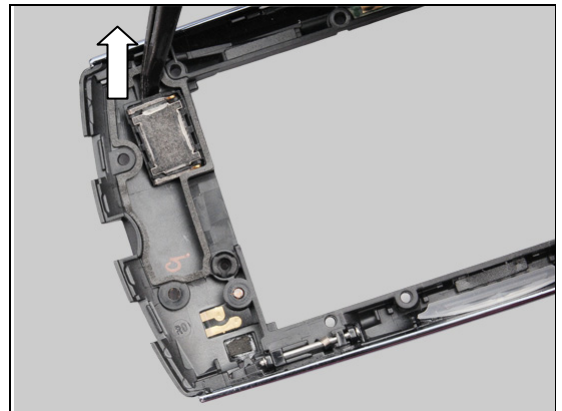
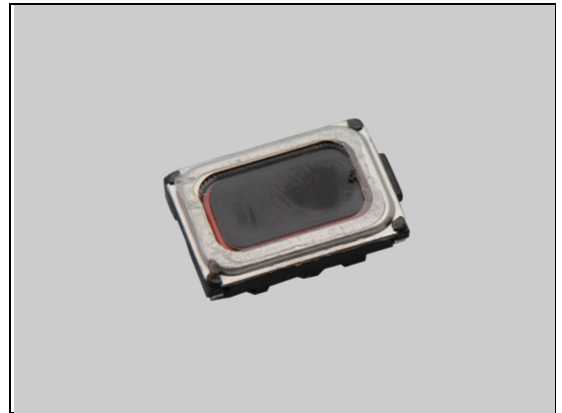
**Remove all remains of the adhesive.**

Peer off the Foil 0.0 mm Speaker adhesive.

**Scrap! Not to be reused!**

#### INSTALLATION

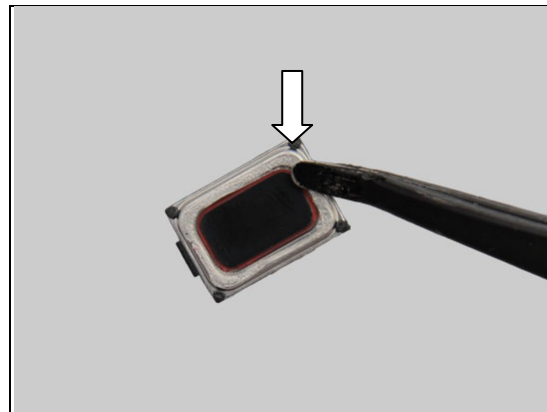
Put a new Foil 0.0 mm Speaker adhesive to the back side of the Loudspeaker in place.





## Replacement: Loudspeaker & Foil 0.0 mm Speaker adhesive

Press to assure its attachment.

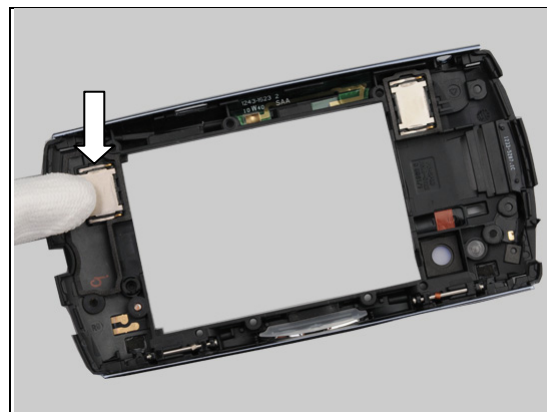


Place the Speaker into the socket.

**Check the two pin's direction.**



Press to secure its attachment.



## Replacement

### 4.43 Magnet

*Follow the 3.1 – 3.8 Disassembly instructions!*

Prepare the new Magnet.

*Follow the 5.1 – 5.8 Reassembly instructions!*

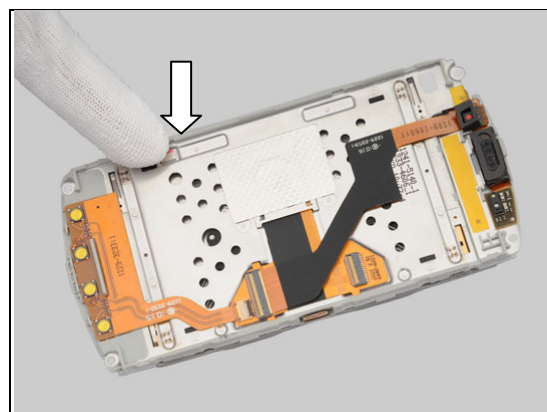
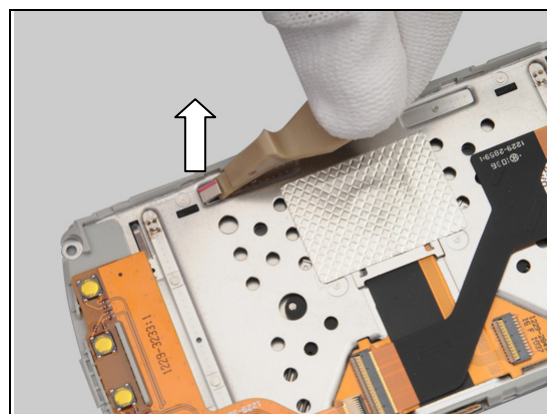
#### REMOVAL

Detach it by using the Flex Film Assembly Tool.

#### INSTALLATION

Place a new Magnet.

Press to assure its position.



## Replacement

### 4.44 Net Speaker Cloth

*Follow the 3.1 – 3.3 Disassembly instructions!*  
*Follow the 4.42 Removal instructions!*  
Prepare the new Net Speaker cloth.  
*Follow the 4.42 Installation instructions!*  
*Follow the 5.6 – 5.8 Reassembly instructions!*

#### REMOVAL

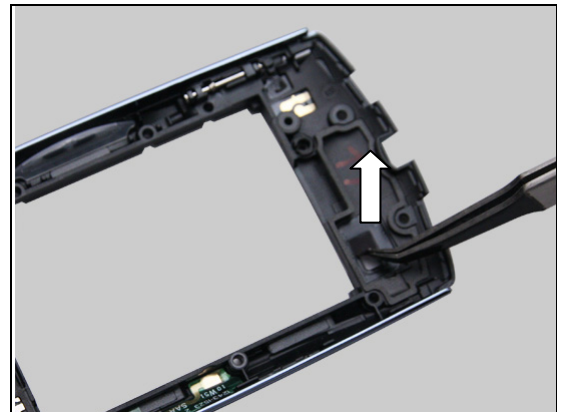
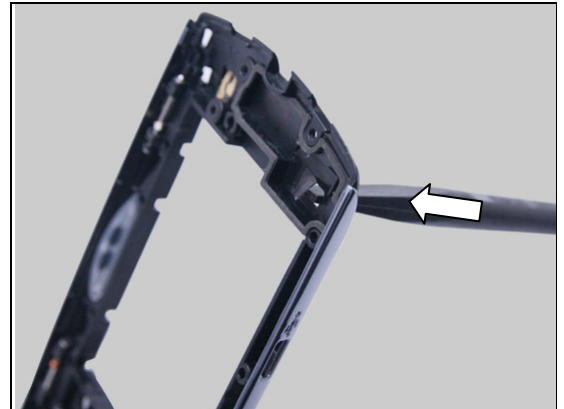
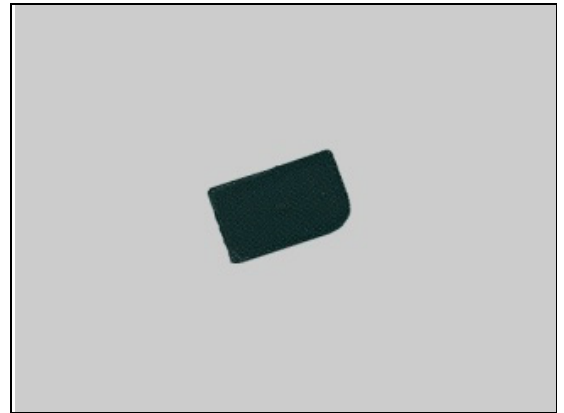
Push against the Net Speaker Cloth from the back side by using a Nylon Pointer.

**Scrap! Not to be reused!**

Detach it by using the Flex Film Assembly Tool.

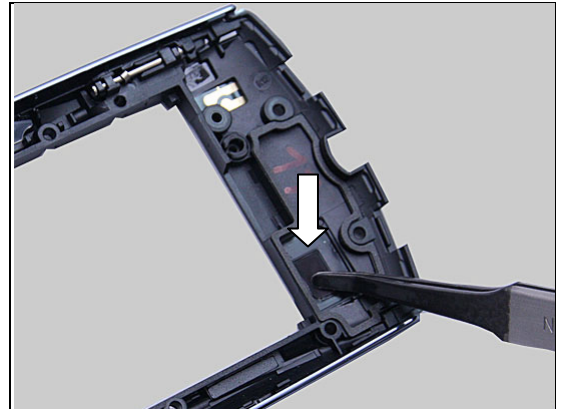
#### INSTALLATION

Place a new Net Speaker cloth.



## Replacement

Press to assure its position.



## Replacement

### 4.45 PBA Receiver Flex

Follow the 3.1 – 3.8 Disassembly instructions!  
 Follow the 4.33 Removal instructions!  
 Prepare the new PBA Receiver Flex.  
 Follow the 4.33 Installation instructions!  
 Follow the 5.1 – 5.8 Reassembly instructions!

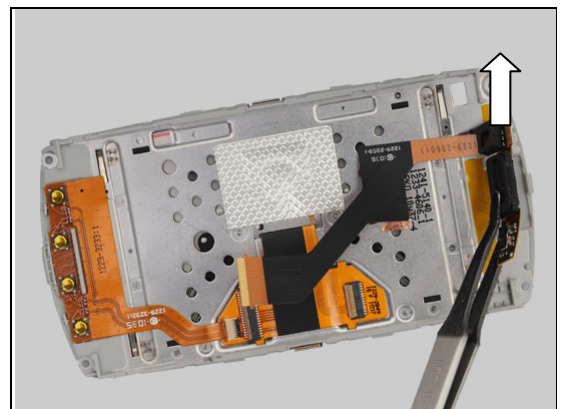
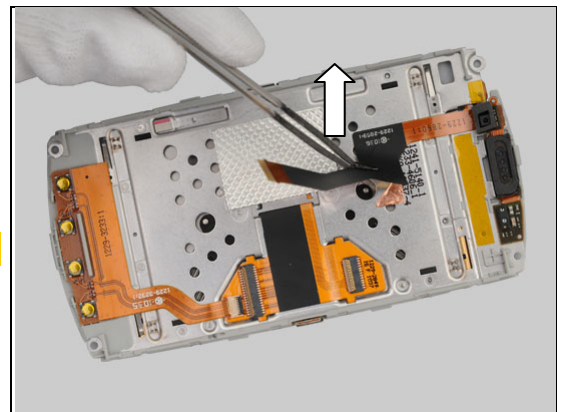
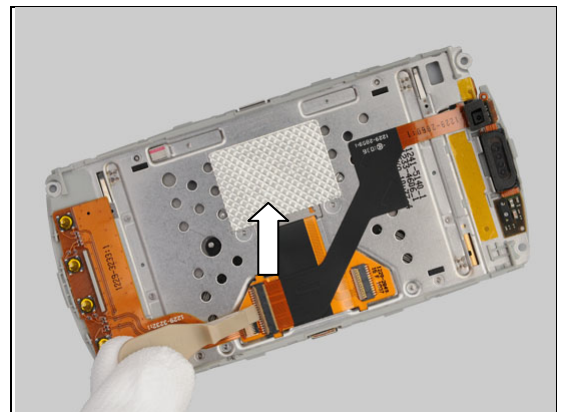
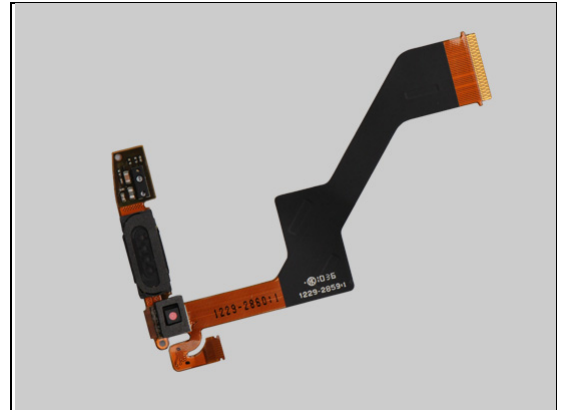
#### REMOVAL

Unsnap the ZIF connector by using a Front Opening Tool.

Detach it by using the Flex Film Assy Tool gently.

**Scrap! Not to be reused!**

Remove from the two guiding holes and shift.

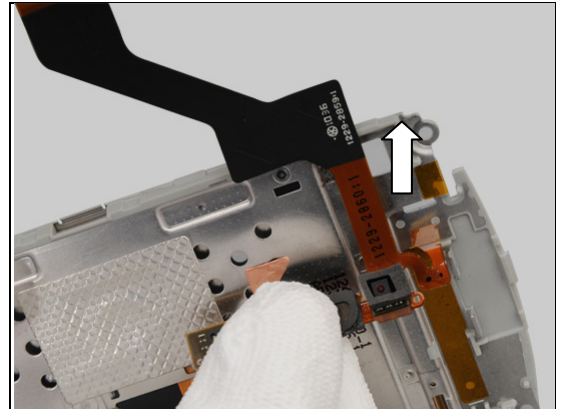




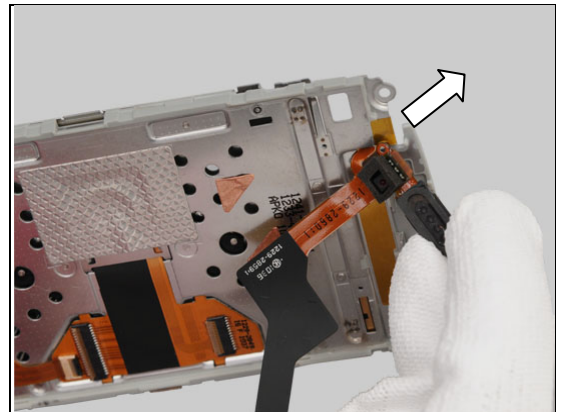
## Replacement: PBA Receiver Flex

### INSTALLATION

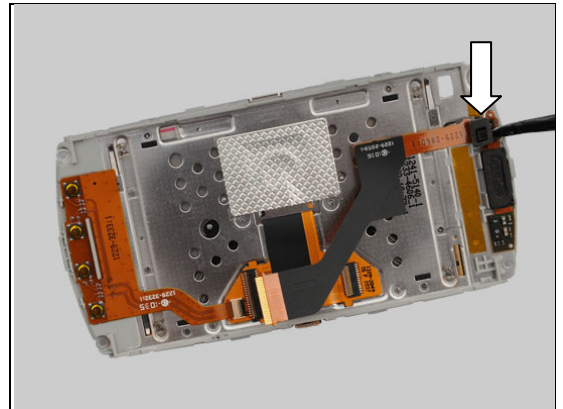
Go through the flex and shift.



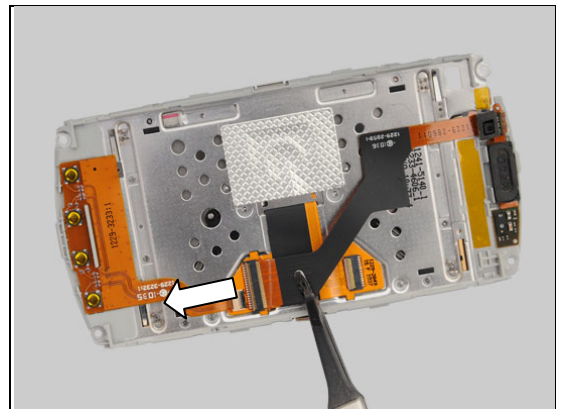
Shift and slide to the top.



Press to the guiding pillar.

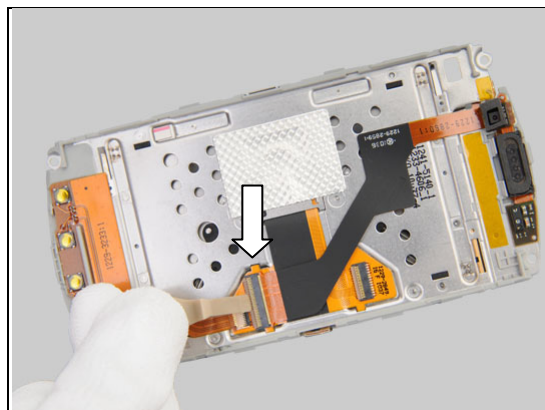


Connect the ZIF connector.



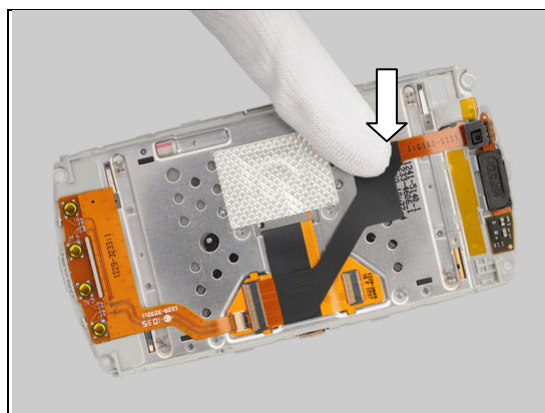
## Replacement: PBA Receiver Flex

Snap the ZIF connector.



Press back and forth to make it smoothly and attached.

**Note the guiding line!**



## Replacement

### 4.46 PBA Top Keypad Flex

Follow the 3.1 – 3.8 Disassembly instructions!  
 Prepare the new PBA Top Keypad Flex.  
 Follow the 5.1 – 5.8 Reassembly instructions!

#### REMOVAL

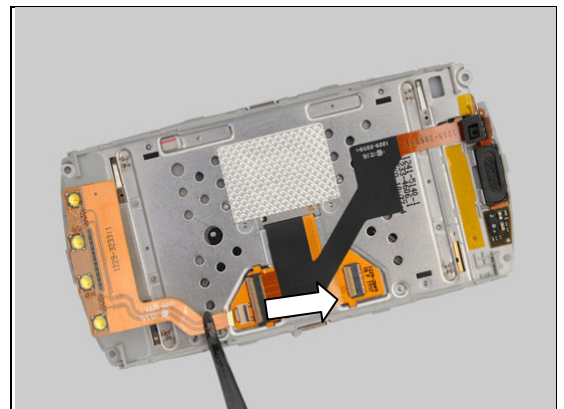
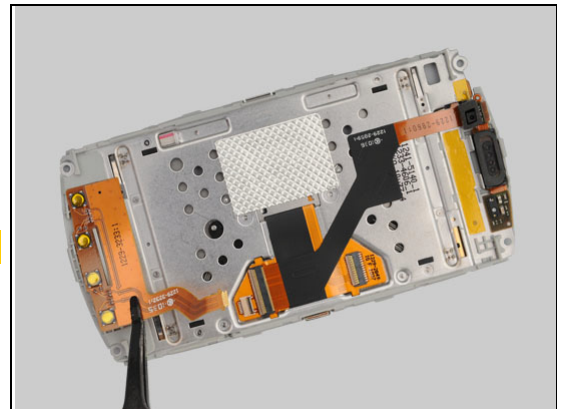
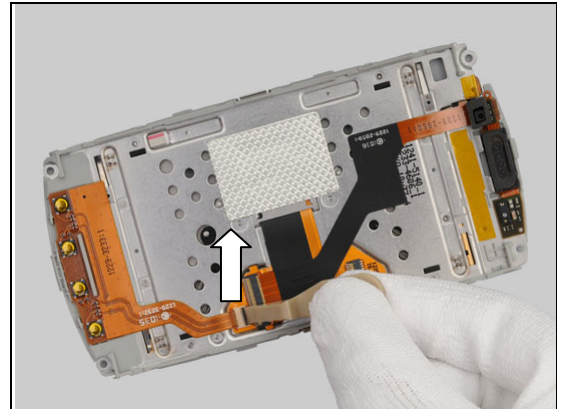
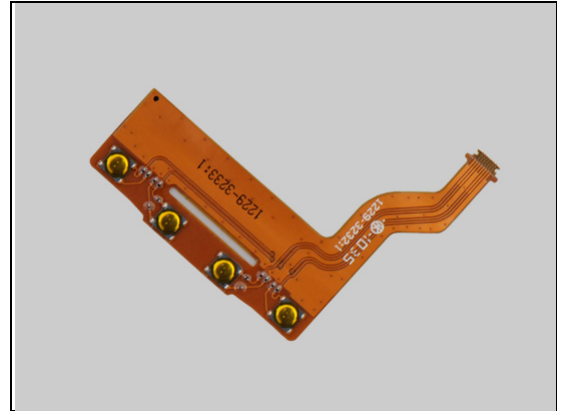
Unsnap the ZIF connector by using a Front Opening Tool.

Lift and remove it.

**Scrap! Not to be reused!**

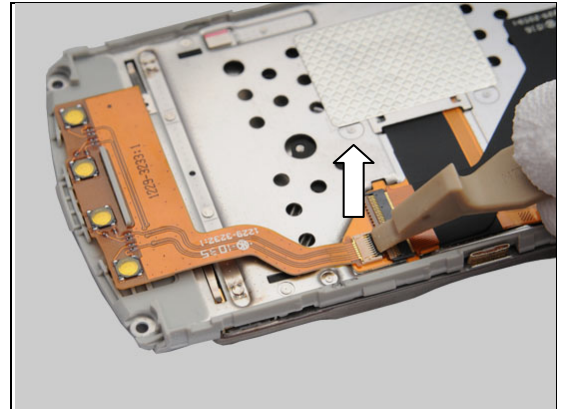
#### INSTALLATION

Place a new PBA Top Keypad Flex and connect the ZIF connector.

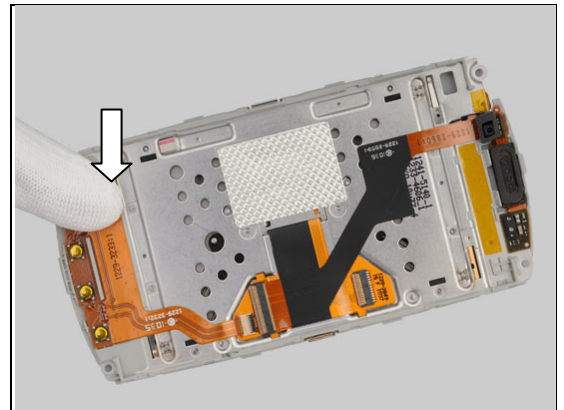


## Replacement: PBA Top Keypad Flex

Snap the ZIF connector.



Press to assure its position.



## Replacement

### 4.47 PBA Zeus Hinge Flex

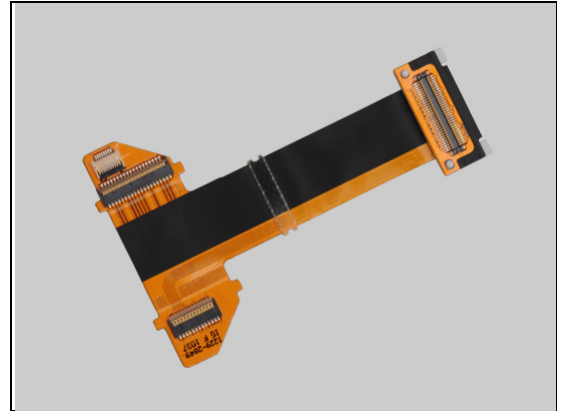
*Follow the 3.1 – 3.8 Disassembly instructions!*

*Follow the 4.11, 4.16, 4.20 Removal instructions!*

Prepare the new PBA Zeus Hinge Flex.

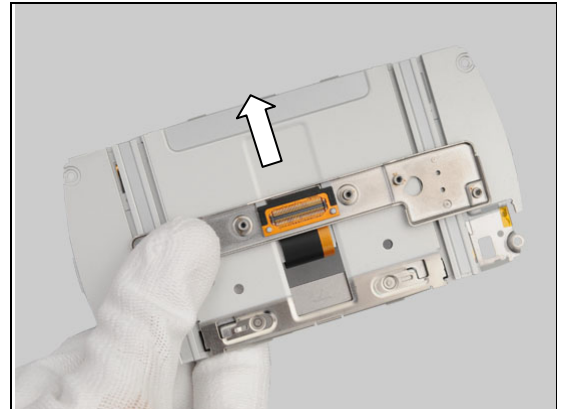
*Follow the 4.20, 4.16, 4.11 Installation instructions!*

*Follow the 5.1 – 5.8 Reassembly instructions!*

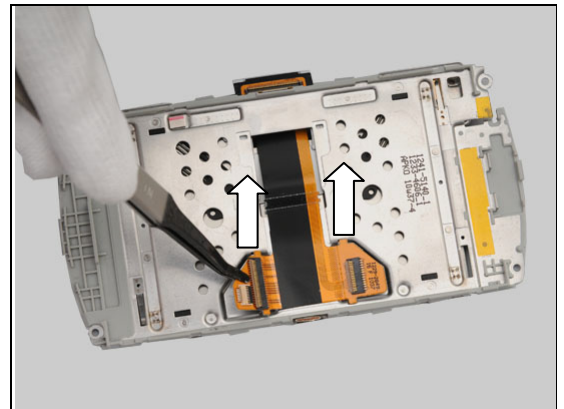


#### REMOVAL

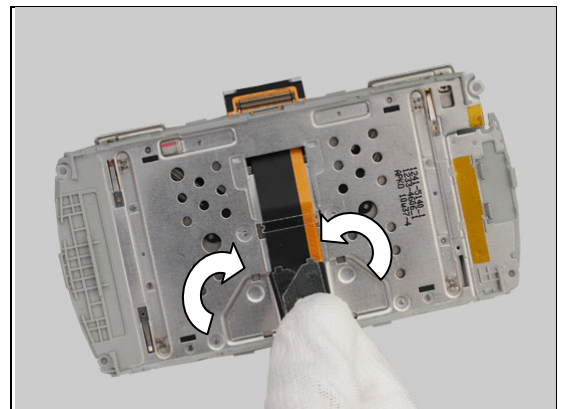
Open the slider as shown.



Detach the both sides (a) and (b).



Fold the both sides to the middle.

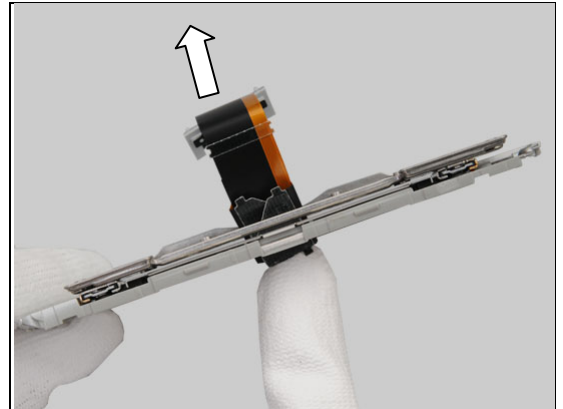




## Replacement: PBA Zeus Hinge Flex

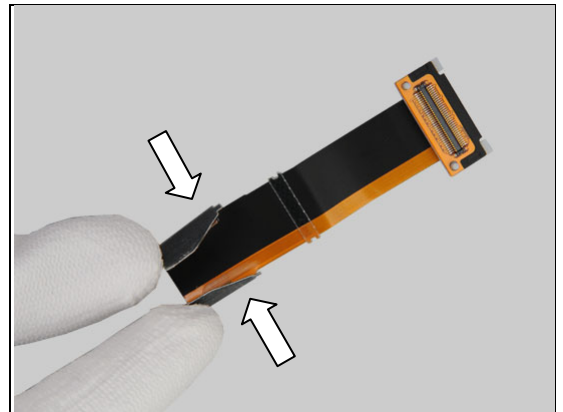
Go through the hole.

**Scrap! Not to be reused!**

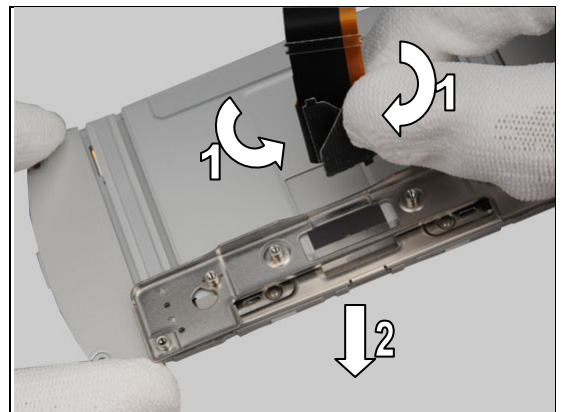


### INSTALLATION

Place a new PBA Zeus Hinge Flex and fold the both sides.

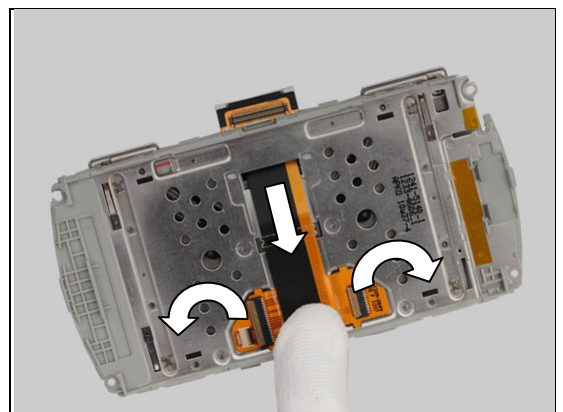


Go through the hole of B-Cover.



Unfold the both sides and press to assure its position.

**Check the 67uiding!**



## Replacement

### 4.48 PBA Zeus USD Board

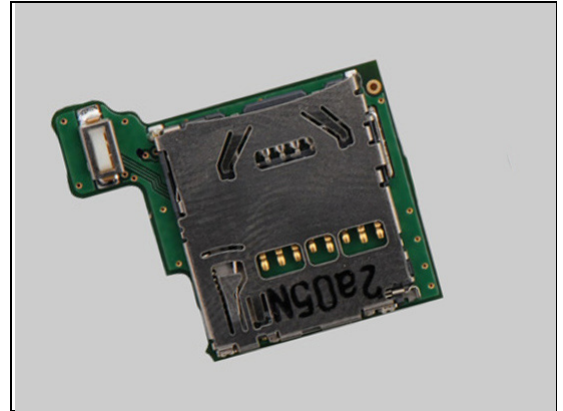
*Follow the 3.1 – 3.3 Disassembly instructions!*

*Follow the 4.21 Removal instructions!*

Prepare the new PBA Zeus USD Board.

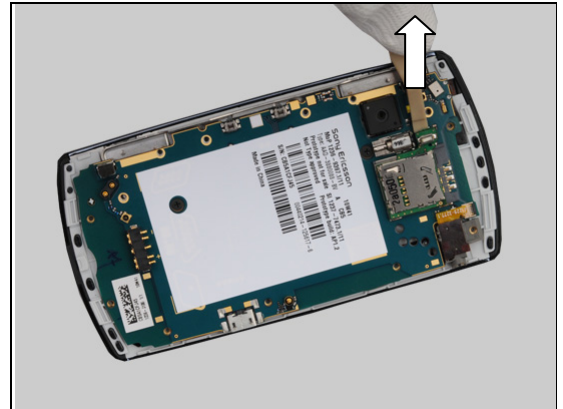
*Follow the 4.21 Installation instructions!*

*Follow the 5.6 – 5.8 Reassembly instructions!*



#### REMOVAL

Disconnect the BtB connector.



Detach it by using a Front Opening Tool.



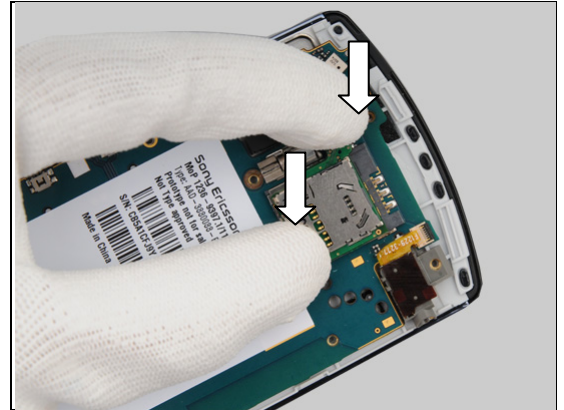
#### INSTALLATION

Place a new PBA Zeus USD Board and connect the BtB connector.



## Replacement: PBA Zeus USD Board

Press to assure the attachment and snap the BtB connector.





## Replacement

### 4.49 Power LED Tape

*Follow the 3.1 – 3.4 Disassembly instructions!*  
Prepare the new Power LED Tape.  
*Follow the 5.5 – 5.8 Reassembly instructions!*

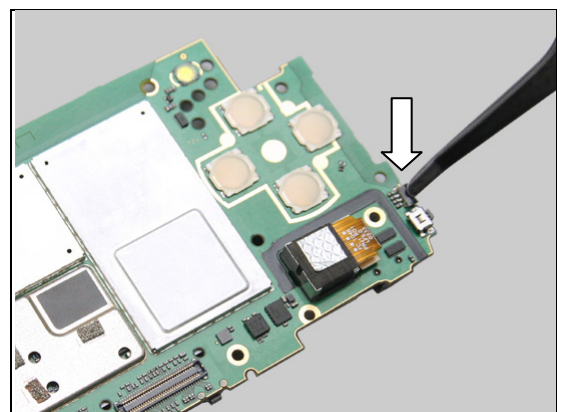
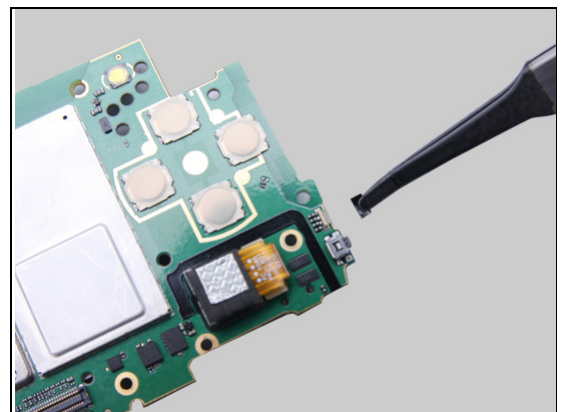
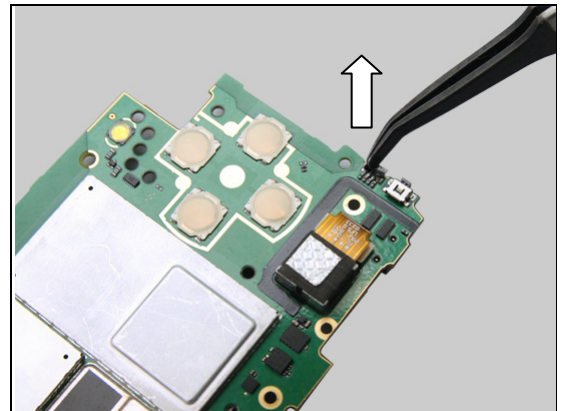
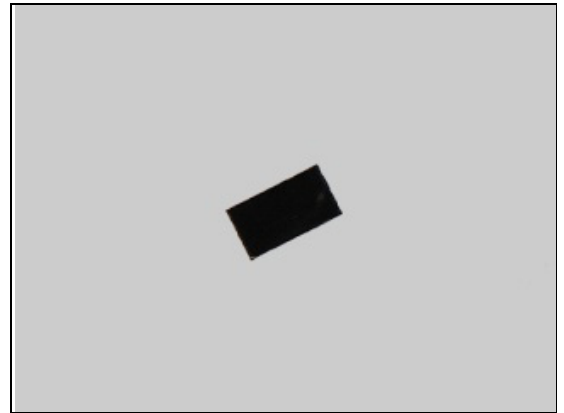
#### REMOVAL

Detach it by using flex film assembly tool.  
**Scrap! Not to be reused!**

#### INSTALLATION

Put a new Power LED Tape in place.

Press to snap it.



## Replacement

### 4.50 Shield Can Closed Lid – BB

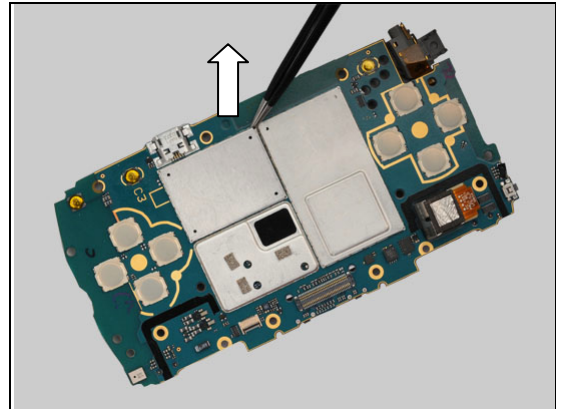
Follow the 3.1 – 3.4 Disassembly instructions!  
Prepare the new Shield Can Closed Lid – BB.  
Follow the 5.5 – 5.8 Reassembly instructions!



#### REMOVAL

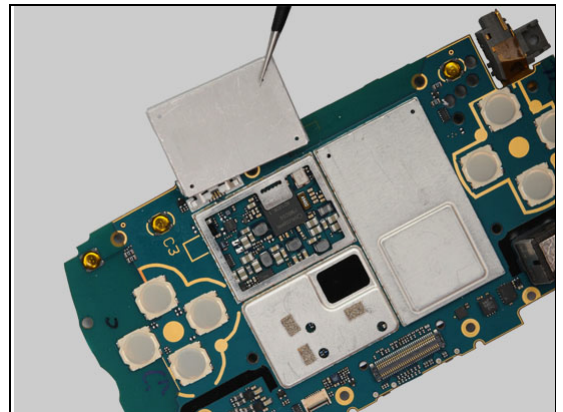
Unsnap the corners of the Shield Can Closed Lid – BB with a pair of tweezers and pull upwards to remove it.

**Scrap! Not to be reused!**

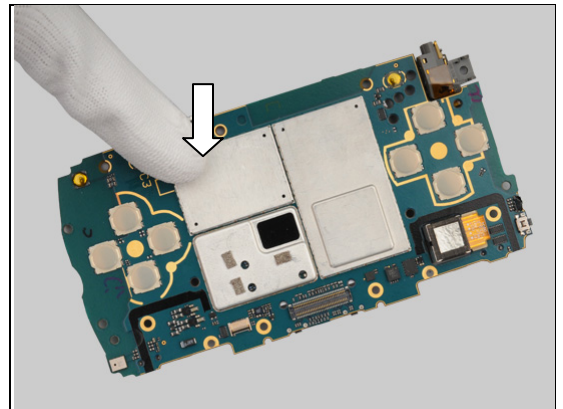


#### INSTALLATION

Put a new Shield Can Close Lid – BB in place.



Press to snap it.





## Replacement

### 4.51 Shield Can Closed Lid – BB Tall

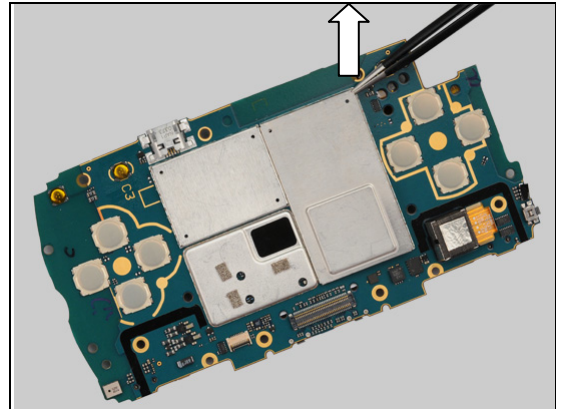
*Follow the 3.1 – 3.4 Disassembly instructions!*  
Prepare the new Shield Can Closed Lid – BB Tall.  
*Follow the 5.5 – 5.8 Reassembly instructions!*



#### REMOVAL

Unsnap the corners with a pair of tweezers and pull upwards to remove it.

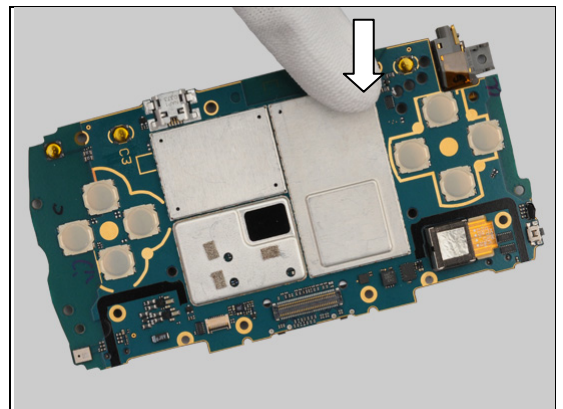
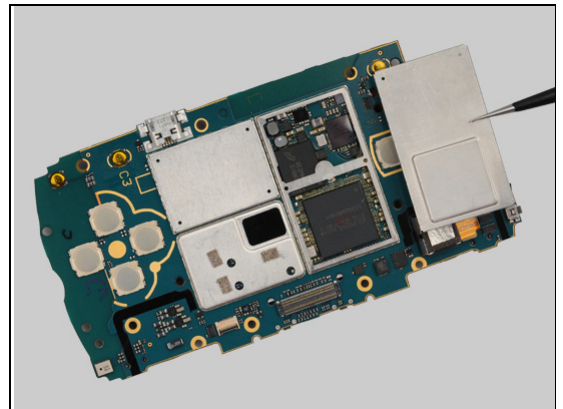
**Scrap! Not to be reused!**



#### INSTALLATION

Place a new Shield Can Closed Lid – BB Tall.

Press to snap it.



## Replacement

### 4.52 Switch Cover Adhesive

*Follow the 3.1 Disassembly instructions!*  
Prepare the new Switch Cover Adhesive.  
*Follow the 5.8 Reassembly instructions!*

#### REMOVAL

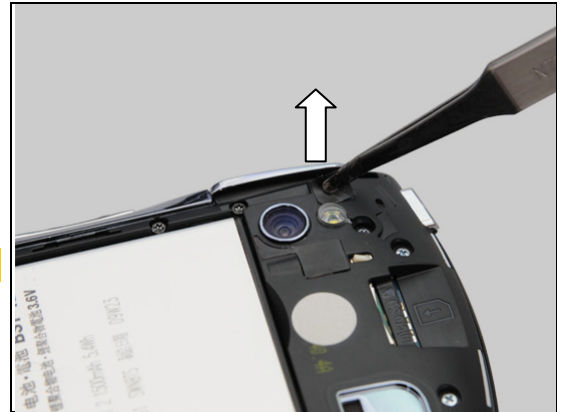
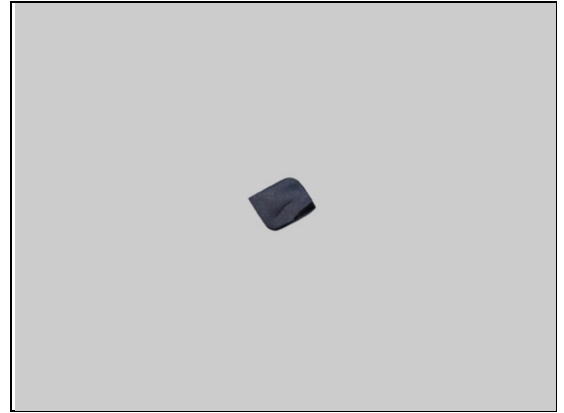
Detach to remove it.

**Scrap! Not to be reused!**

#### INSTALLATION

Place a new Switch Cover Adhesive.

Press to assure its attachment.



## Replacement

### 4.53 Washer

Follow the 3.1 – 3.3 Disassembly instructions!  
 Prepare the new Washer.  
 Follow the 5.6 – 5.8 Reassembly instructions!

#### REMOVAL

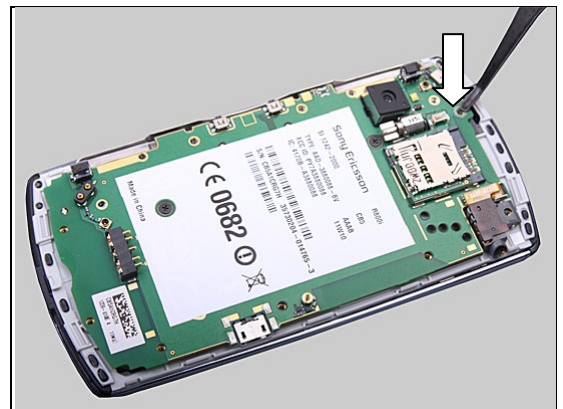
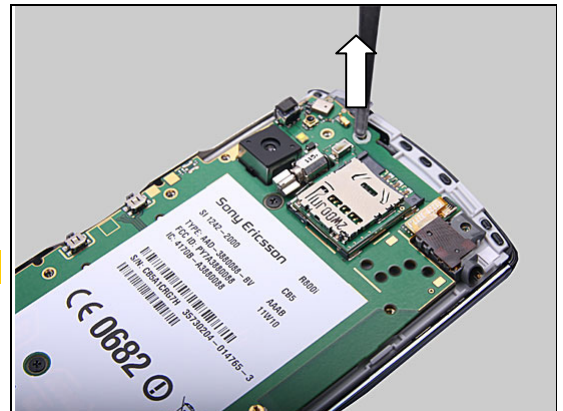
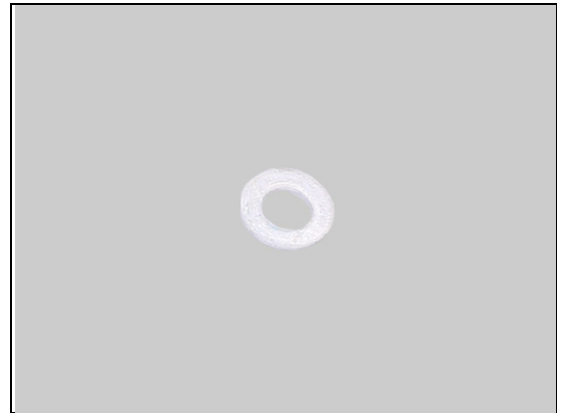
Detach to remove it.

**Scrap! Not to be reused!**

#### INSTALLATION

Place a new Washer.

Press to assure its attachment.



## Replacement

### Liquid Intrusion Indicator

Follow the 3.1 – 3.4 Disassembly instructions!  
Prepare the new Water Indicator Foil 0.34 mm.  
Follow the 5.5 – 5.8 Reassembly instructions!

#### REMOVAL

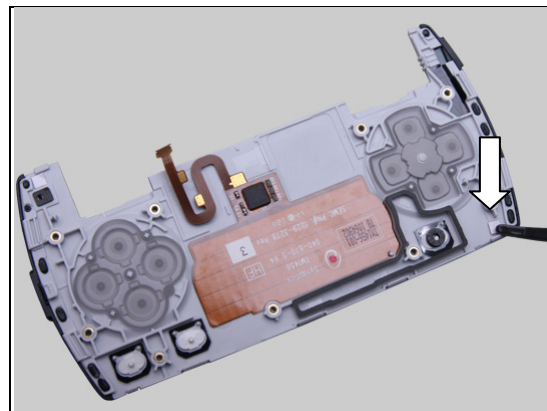
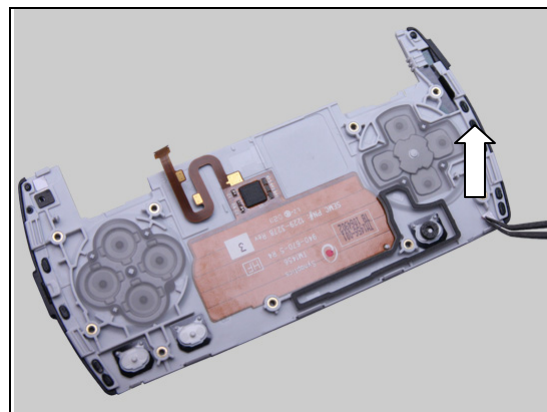
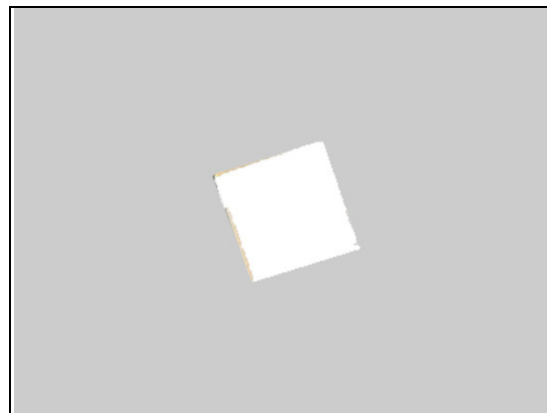
Detach to remove it.

**Scrap! Not to be reused!**

#### INSTALLATION

Place a new Water Indicator Foil 0.34 mm.

Press to assure its attachment.



## Replacement: Board Swap

### 4.54 Board Swap

#### 4.54.1 Board Swap- Replacement

Follow the 3.1 – 3.4, Disassembly instructions.

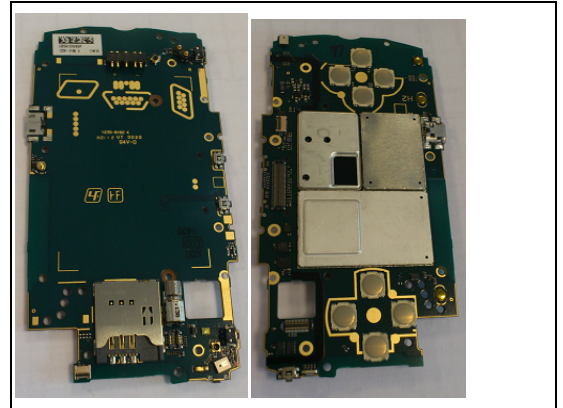
Replace the Swap Board.

Reuse the Camera. 4.12

Add foil adhesive gasket 4.21, gasket conductive 3 pcs 4.29, gasket trigger switch gasket 4.32, PBA Zeus USD board 4.48, power led tape 4.49 to new Board.

Follow the 5.5 - 5.8 Reassembly instructions.

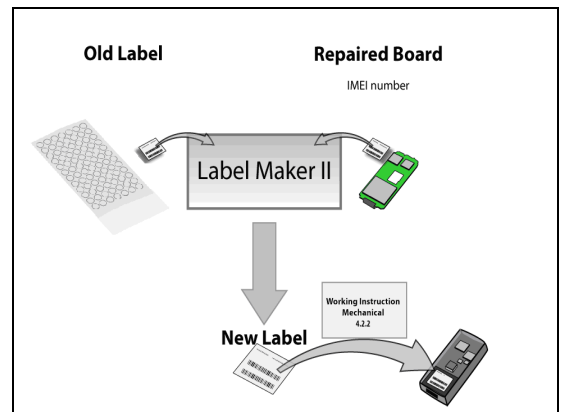
Startup the unit to initialize settings, before performing Customize Phone in Emma



#### 4.54.2 Board Swap – Change Label

##### CHANGE LABEL

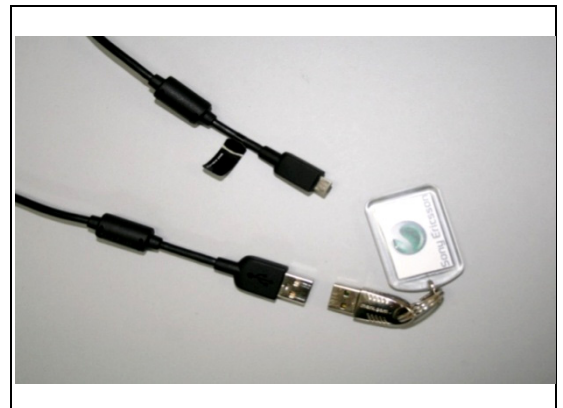
Follow the instructions in the Generic Repair Manual – Build swap for change of label.



#### 4.54.3 Board Swap – Customize of Software

##### CUSTOMIZE OF SOFTWARE

Follow the instructions in the Generic Repair Manual – Build swap for customization of the software.



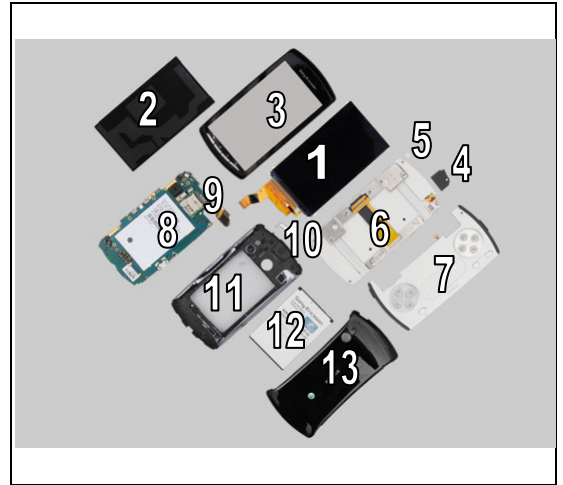




## 5 Reassembly

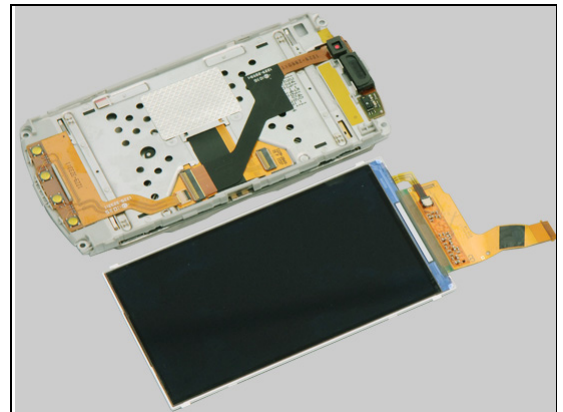
The reassembly is done in the following order:

1. Display
2. LCD Shim
3. A-Cover
4. Label Touch Circuit
5. Cap Screw Cover
6. B-Cover
7. C-Cover
8. PBA
9. PBA Audio Jack FPC
10. Key Power
11. D-Cover
12. Battery
13. Battery Cover

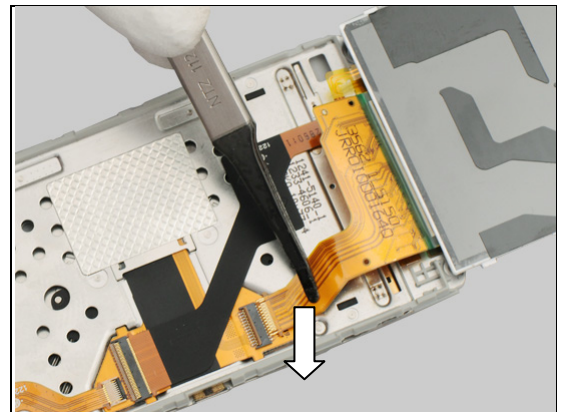


### 5.1 Display

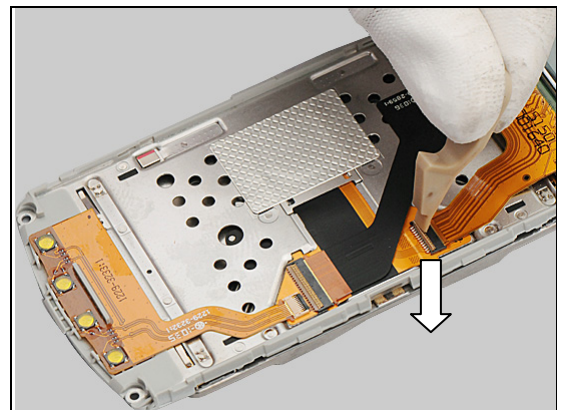
Place the Display and the B-Cover in place.



Connect the ZIF connector.

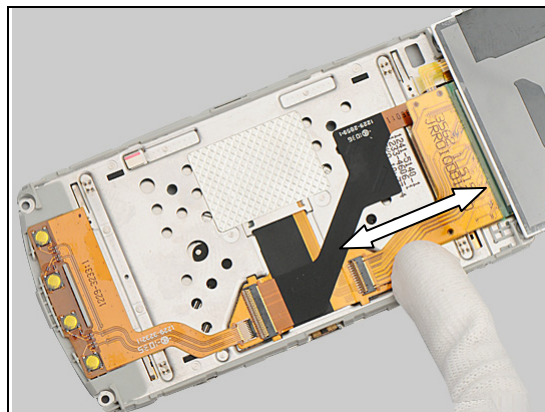


Snap the ZIF connector.



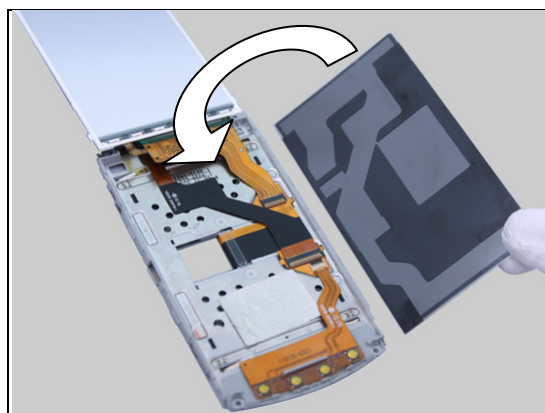
## Reassembly

Press the PBA Receiver Flex to assure its attachment.



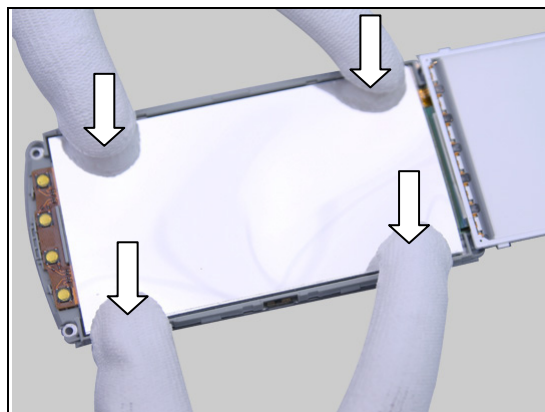
Turn over the LCD Shim in place.

**Note the direction!**



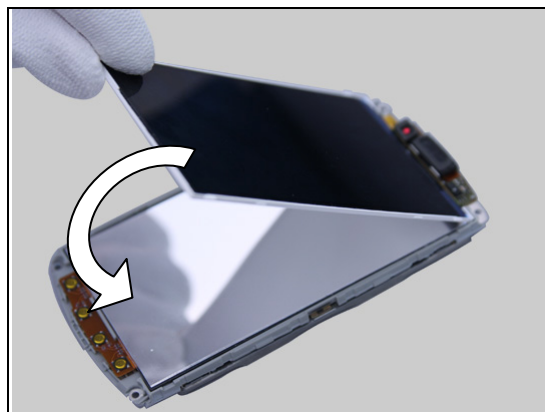
Press to assure its position.

**Do not touch the screen!**



Turn the Display over carefully.

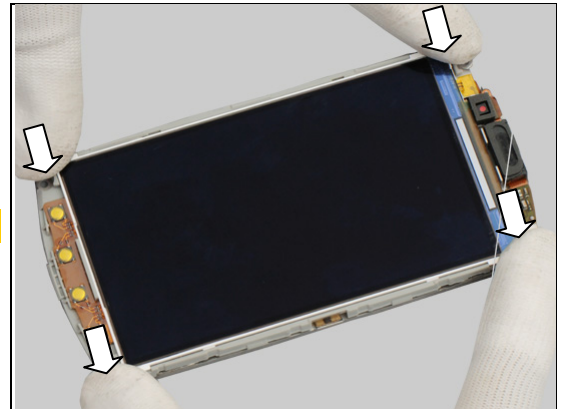
**Do not touch the screen!**



## Reassembly

Press to snap the four hooks of the Display.]

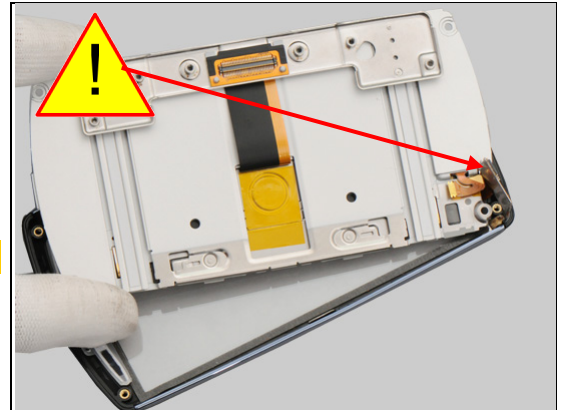
**Do not touch the screen!**



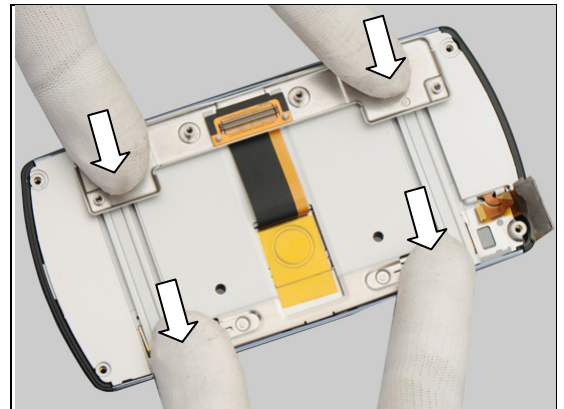
## 5.2 Front Assembly

Place the B-Cover into A-Cover with 30 degree tilt.

**Make sure the flex upright!**

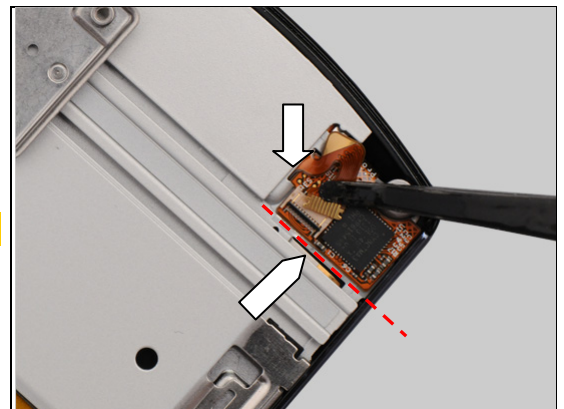


Press with fingers to secure its position.



Place the flex in position.

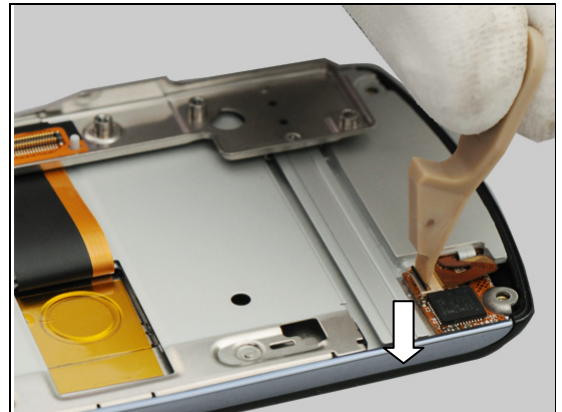
**Touch panel flex should be aligned with step in B-cover!**





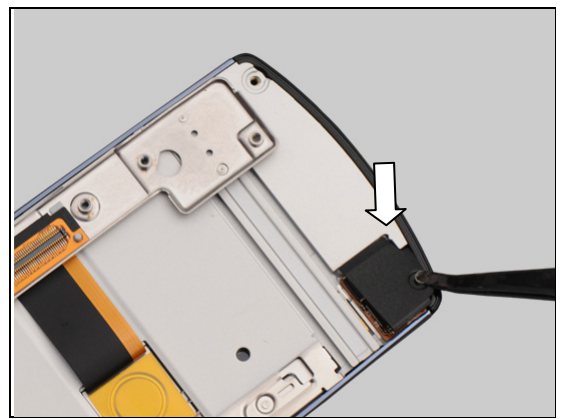
## Reassembly

Lock the ZIF connector.

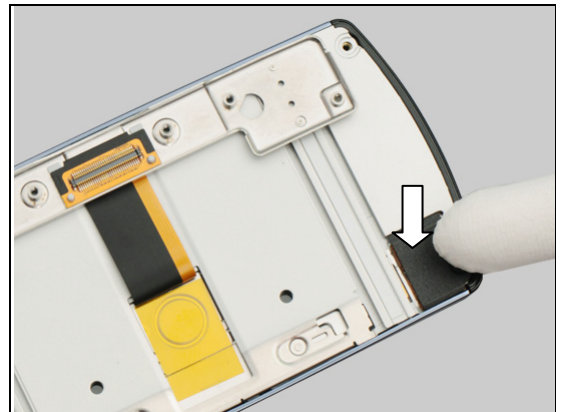


### 5.3 Label Touch Circuit

Place the Label Touch Circuit into socket from the left-upper corner.



Press to assure its attachment.

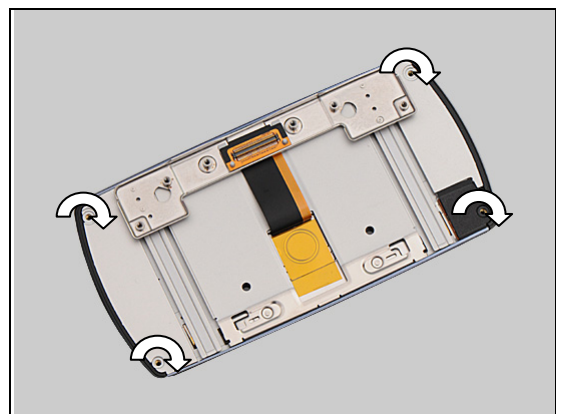


### 5.4 Cap Screw Cover

Apply 12 Ncm torque when tightening Screw Phillips Len: 2.3 Diam:3.0 M1.6 X 0 with Bits (JCIS No 0).

**Take new screws!**

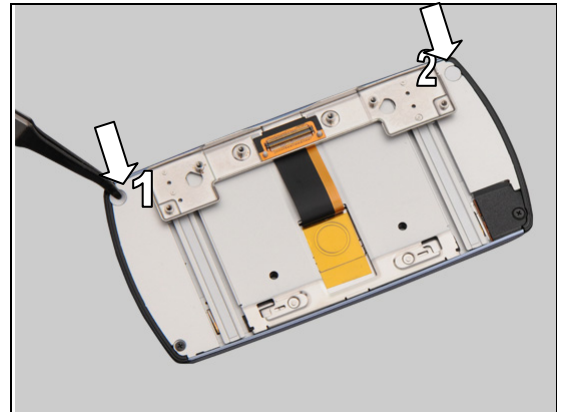
**Make shure the Label Touch Circuit is flat after screwing!**





## Reassembly

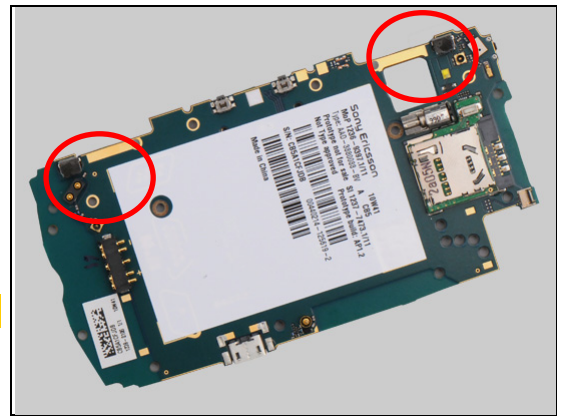
Attach the two Cap Screw Covers in place.



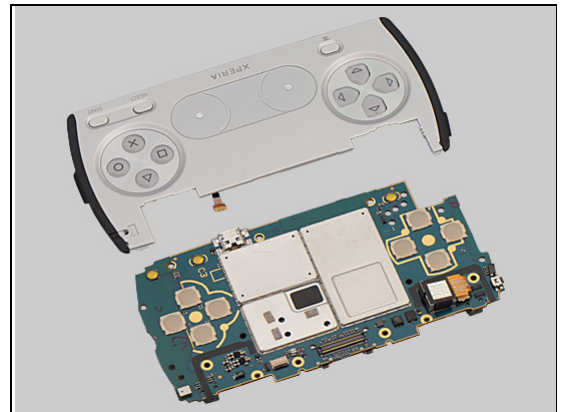
### 5.5 C-Cover & PBA & PBA Audio Jack FPC

Replace the Gasket Trigger switch gasket. (Refer to 4.29)

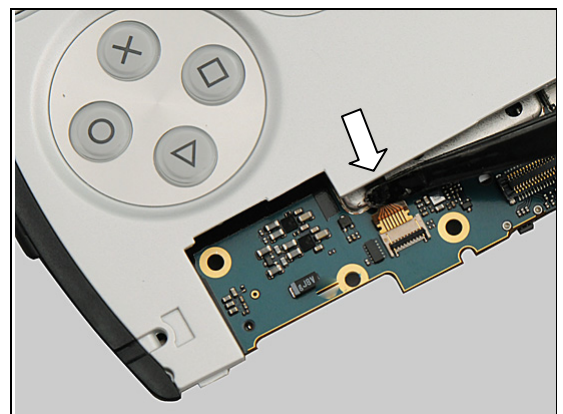
***It should not be reused!***



Prepare the C-Cover and PBA.



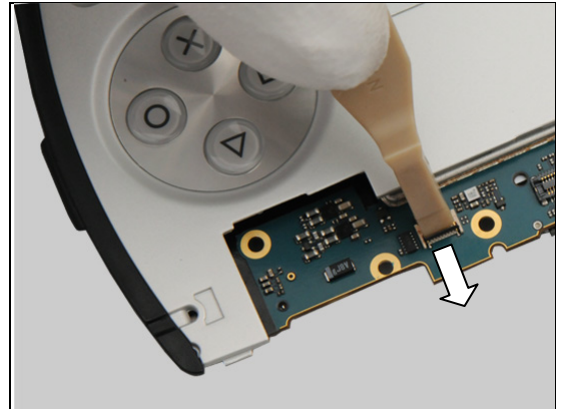
Connect the ZIF connector.





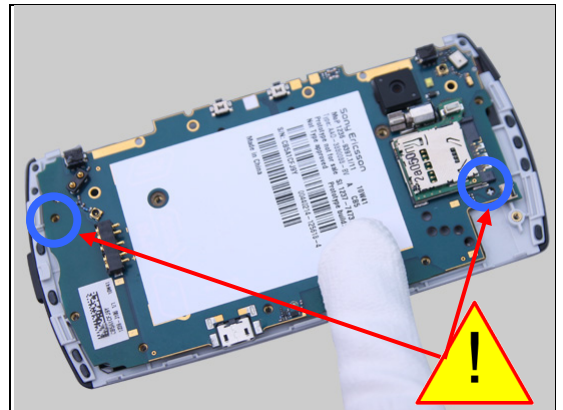
## Reassembly

Snap the ZIF connector by using a Front Opening Tool.



Press the PBA on the C-Cover in place.

**Check the guiding points.**



Place the PBA Audio Jack FPC in place.



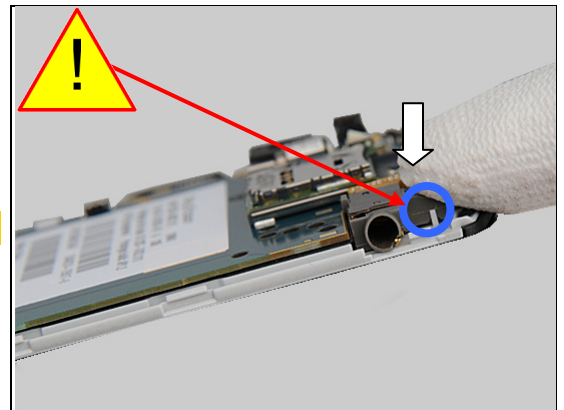
Snap to connect the ZIF connector.



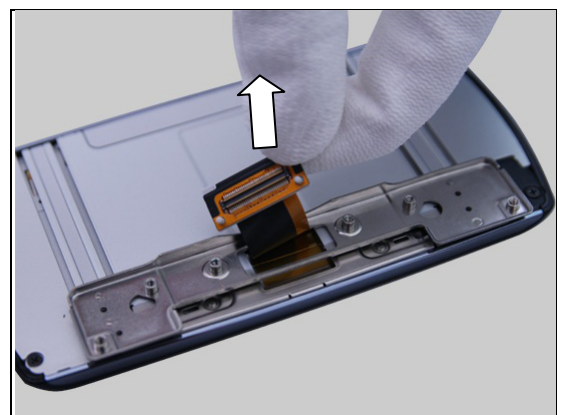
## Reassembly

Press the PBA Audio Jack in place.

**Check the guiding points.**

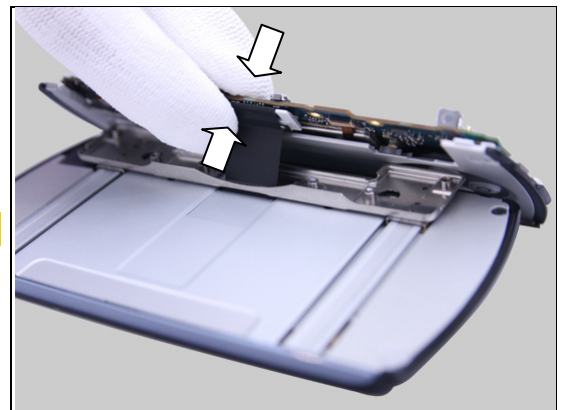


Open the slider and pull out the PBA Zeus Hinge Flex.



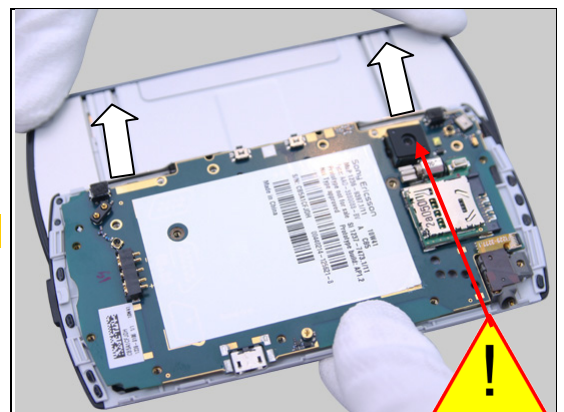
Connect the BtB connector by fingers.

**Listen to the click sound.**



Close the slider.

**Make sure the Camera upon the edge of B-Cover!**



## Reassembly

Apply 12 Ncm torque when tightening the two Screw Phillips  
Len:2.3 Diam:3.0 M1.6 X 0 with Bits (JCIS No 0).

**Take new screws!**



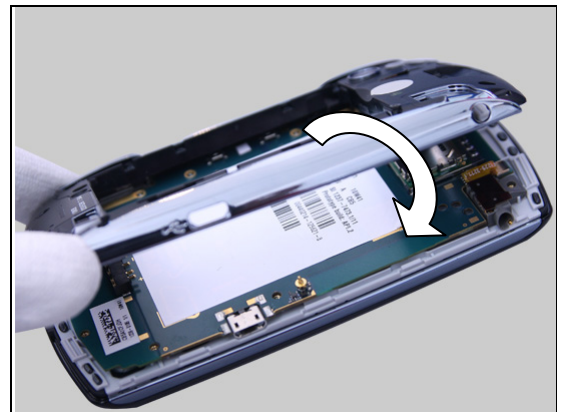
### 5.6 D-Cover

Set the Key Power on its position.

**Check the guiding points.**



Put the D-Cover in place.



There are nine hooks on D-Cover.



## Reassembly

Press to snap the hooks.



Do the same for the opposite side.



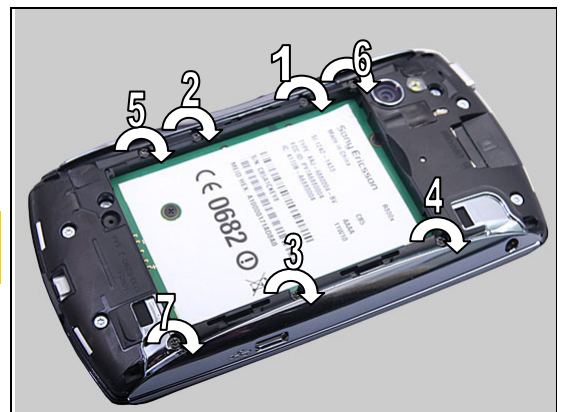
Apply 12 Ncm torque when tightening the six Screw Torx  
Len:3.4 Diam:3.0 M1.6 X 0.35 with T5.

**Take new screws!**  
**According to the order as shown.**



Apply 12 Ncm torque when tightening the seven Screw Torx  
Len:5.4 Diam:2.5 M1.6 X 0.35 with T5.

**Take new screws!**  
**According to the order as shown.**





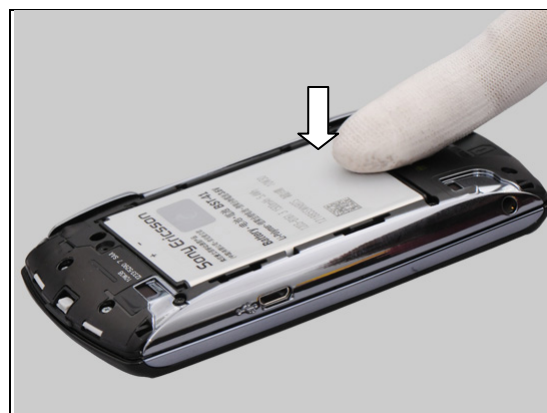
## Reassembly

### 5.7 Battery

Put the Battery in place.



Press the Battery into its cavity.



### 5.8 Battery Cover

Hook the Battery Cover from the top.



Press to snap the three middle hooks.





## Reassembly

Press to snap the other seven hooks.





## 6 Revision History

Rev.	Date	Changes / Comments
1	2011-Mar-21	Initial release
2	2011-April-18	Added "Scrap! Not to be reused!" on parts Net Speaker Cloth, Power LED Tape, Shield Can Closed Lid – BB Tall, Shield Can Closed Lid – BB
3	2011-May-3	Added "4.53 Washer", updated "Screw Torx Len:3.4 Diam:3.0" picture
4	2011-May-04	System error. No updates
5	2011-Aug-26	Add of Board Swap chapter 4.55
6	2011-Aug-30	System error. No updates
7	2011-Sept-21	Changed Torx in Chapter 3.3
8	2011-Sept-28	Changed to T5 instead of T6
9	2012-Jan-18	Correct the mix up between Gasket Conductive 1 Golden and Gasket Conductive 2 Golden