

# SONY®

Color Video Monitor

**PVM-20L1\***

**PVM-14L1\***

**PVM-9L1\***



\*Viewable area, measured diagonally

# PVM-L1 Series

Sony introduces its new, cost-effective PVM-L1 Series monitors, featuring resolutions up to 600 TV lines\*, and all the practical features you'd expect from Sony Trinitron® professional monitors.

Enhanced by stunning, high-resolution image quality and essential viewing functions, these new monitors are ideal for the demands of a wide range of picture-monitoring requirements - from production suites to school classrooms, through to wedding parlors and more.

\* Featured on the PVM-20L1 and PVM-14L1 models



PVM-14L1



PVM-20L1



PVM-9L1

## Features

### Superior Picture Performance

#### ► High Picture Quality

All Sony PVM-L1 monitors use Trinitron CRT technology to provide clear and precise images. The PVM-20L1 and PVM-14L1 models generate a striking image resolution of 600 TV lines, while the PVM-9L1 model supports a resolution of 250 TV lines.

#### ► Beam-Current Feedback Circuit

When monitors are in continuous operation over long periods of time, their white balance is often prone to drift. To combat this, PVM-L1 Series monitors are equipped with a beam-current feedback circuit, which corrects white-balance drift and ensures the long-term stability of on-screen color reproduction.

#### ► Digital Comb Filter

The PVM-20L1 and PVM-14L1 models are equipped with an NTSC digital comb filter that enhances the luminance/chrominance separation used to reduce cross-color interference and color noise. This ensures clear and highly detailed picture reproduction.

### NTSC/PAL Operation

PVM-L1 Series monitors can automatically detect whether the composite signal input is NTSC or PAL. Therefore, users are not required to manually select the appropriate color system.

### Effective Operational Functions

#### ► 4:3/16:9 Capability

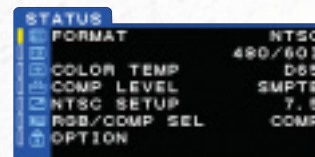
The aspect ratio can be easily switched between 4:3 and 16:9 via the on-screen menu facility.

#### ► Switchable Color Temperature

The color temperature can be selected from a choice of D65, D93 or a user-defined preset (from 5000K to 10000K).

#### ► Six-Language On-Screen Display

Sony PVM-L1 Series monitors provide a variety of on-screen window-like menus for easy monitor adjustment and operation. The On-Screen Display is available in English, French, Spanish, German, Italian and Japanese.



### Other Features

#### ► 19-inch EIA-Standard Rack Compatibility

PVM-9L1 monitors can be mounted side by side in a 19-inch EIA-standard rack using the optional MB-520 rack-mounting bracket. Empty spaces in the rack system can be covered with the optional MB-509 mounting panel. PVM-14L1 monitors can be mounted using the optional MB-502B\* and MB-502C\*\* mounting brackets, while the PVM-20L1 monitors can be mounted using the optional SLR-103A\* and SLR-103C\*\* slide-rail kits.

\* For the market except Europe.

\*\*For Europe market only.

#### ► Audio-Monitoring Facility

All PVM-L1 monitors have an integrated speaker (0.8 W, monaural) that enables users to monitor sound.

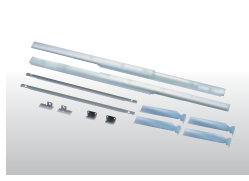
#### ► Worldwide Power Supply

Compatible with AC 100 to 240 V (50/60 Hz) power supply.

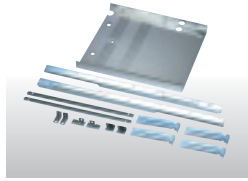
# Optional Accessories



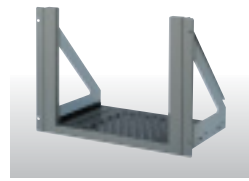
**SLR-102**  
Slide Rail Kit  
for the PVM-14L1.



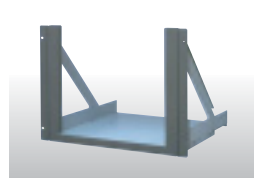
**SLR-103A\***  
Slide Rail Kit  
for the PVM-20L1.  
\* For the market except Europe.



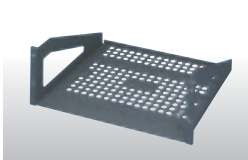
**SLR-103C\***  
Slide Rail Kit (AEP)  
for the PVM-20L1.  
\* For Europe market only.



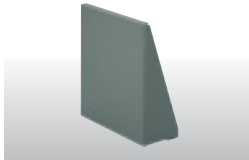
**MB-502B\***  
Rack Mount Bracket  
for the PVM-14L1.  
\* For the market except Europe.



**MB-502C\***  
Rack Mount Bracket (AEP)  
for the PVM-14L1.  
\* For Europe market only.



**MB-520**  
Rack Mount Bracket  
for the PVM-9L1.



**MB-509**  
Blank Panel  
for the PVM-9L1.

## Supplied Accessories

- AC cord (1)
- Operating Instructions (1)

## Rear Panel



PVM-14L1  
PVM-20L1



PVM-9L1



## Front Panel



PVM-14L1  
PVM-20L1



PVM-9L1

# Specifications

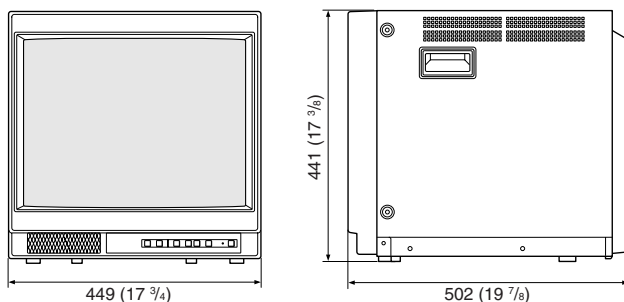
		PVM-20L1	PVM-14L1	PVM-9L1
<b>General</b>				
CRT	CRT type *	20-inch Trinitron	14-inch Trinitron	9-inch Trinitron
	AG pitch	0.4 mm	0.25 mm	0.5 mm
	Phosphor	P-22		
	Effective picture size (4:3)	385.8 (W) x 290.6 (H) mm, 481.3 (Diagonal) mm	267.5 (W) x 200.6 (H) mm, 340.0 (Diagonal) mm	159.5 (W) x 117.0 (H) mm 194.5 (Diagonal) mm
Center Resolution (Y/C input 4:3)		600 TV lines		250 TV lines
Color system		PAL, NTSC		
Frequency response		8.0 MHz ( $\frac{0}{6}$ ) dB		4.0 MHz ( $\frac{0}{6}$ ) dB
Scanning frequency		1 5.734 kHz (NTSC), 15.625 kHz (PAL)		
Normal scan		7% overscan		6% overscan
Linearity	Horizontal	Less than 8% (typical)		
	Vertical	Less than 7% (typical)		
Convergence	Center	0.5 mm (Typical)	0.4 mm (Typical)	
	Peripheral	0.7 mm (Typical)	0.5 mm (Typical)	
Raster size stability	Horizontal	1.0% (typical)		
	Vertical	1.5% (typical)		
HV regulation		4.0% (typical)	3.5% (typical)	3.0% (typical)
Color temperature		D65/D93/User adjustable		
Power requirements		AC 100 to 240 V, 50/60 Hz		
Power consumption (Typical)		75 W	68 W	40 W
Dimensions (W x H x D)		Approx. 449 x 441 x 502 mm (17 $\frac{3}{4}$ x 17 $\frac{3}{8}$ x 19 $\frac{7}{8}$ inches)	Approx. 346 x 340 x 414 mm (13 $\frac{5}{8}$ x 13 $\frac{1}{2}$ x 16 $\frac{3}{8}$ inches)	Approx. 217 x 218 x 350 mm (8 $\frac{5}{8}$ x 8 $\frac{5}{8}$ x 13 $\frac{7}{8}$ inches)
Mass		Approx. 28.0 kg (61 lb 12 oz)	Approx. 15.0 kg (33 lb 1 oz)	Approx. 6.3 kg (13 lb 14 oz)
<b>Input/Output</b>				
Line A	Composite	Loop-through BNC, 1.0 Vp-p +3 dB/-6 dB, sync negative, automatic 75 $\Omega$ termination		
	Y/C**	Loop-through Mini Din 4-pin, automatic 75 $\Omega$ termination		
	Y	1.0 Vp-p, sync negative		
	Audio	Phono jack, -5 dBu 47 k $\Omega$ or higher		
Line B	Composite	Loop-through BNC, 1.0 Vp-p, sync negative, automatic 75 $\Omega$ termination	-	
	Y/C**	Loop-through Mini Din 4-pin, automatic 75 $\Omega$ termination	-	
	Y	1.0 Vp-p, sync negative	-	
	C	0.286 Vp-p (NTSC), 0.3 Vp-p (PAL) 75 $\Omega$ termination	-	
	Audio	Phono jack, -5 dBu 47 k $\Omega$ or higher	-	
Remote	Parallel remote	Modular 8-pin (Fixed)		
Audio output		0.8 W (Distortion: Less than 5%)		
<b>Regulation Compliance</b>		UL-1950, CSA-950, EN 60950, VCCI class A, FCC class A, IC class A, C-Tick, CE (LVD), CE (EMC), JEITA, DHHS, DNHW, CCC, KTL, BSMI		
<b>Operating conditions</b>	Operating temperature	0 to +35° C (+32 to +95° F)		
	Storage temperature	-10 to +40° C (+14 to +104° F)		
	Operating humidity	35 to 85% (No condensation)		
	Storage humidity	0 to 90%		

\*Viewable area, measured diagonally.

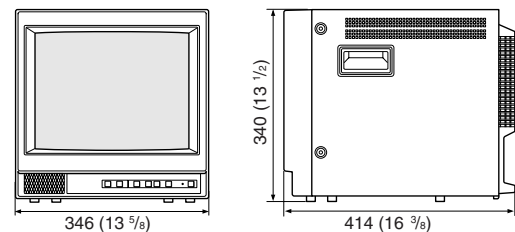
\*\* The Y/C input has priority over the composite input.

## Dimensions

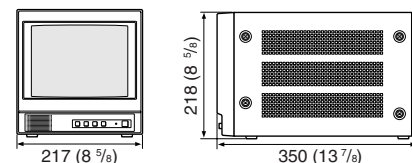
■ PVM-20L1



■ PVM-14L1



■ PVM-9L1



Unit: mm (inches)

## Distributed by

©2003 Sony Corporation. All rights reserved.  
 Reproduction in whole or in part without written permissions is prohibited.  
 All non-metric weights and measures are approximate.  
 Features and specifications are subject to change without notice.  
 Sony and Trinitron are trademarks of Sony Corporation.