



Video Products Technical Bulletin 30-2008-091

DATE: July 14, 2008

SUBJECT: FIRMWARE UPGRADE—VERSION 2.03

MODEL: **BKM-FW50**
BKM-FW50/1

DESCRIPTION

Firmware version 2.03 is available.

SERIAL NO:

BKM-FW50 2,000,001–2,000,080
BKM-FW50/1 2,000,081–2,000,930

PARTS REQUIRED

Part No.	Description	Qty.
FW50V203	BKM-FW50 Firmware V2.03	1

ORDERING INFORMATION

To order upgrades, contact:

Sony SoftwarePLUS®
8281 NW 107th Terrace
Kansas City, MO 64153
Call: (800) 538-7550
Fax: (816) 880-6854
Web: <http://www.sony.com/softwareplus>

Customers outside the United States: *Please order parts from your usual supplier.*

VERSION COMPATIBILITY

The units in Table 1 use the firmware version indicated and are compatible with the monitors listed.

Table 1

BKM-FW50 Serial No.	Firmware Version	Compatible Monitors
2,000,001–2,000,080	1.00	FWD-32LX1 FWD-42LX1
2,000,081–2,000,930	2.00	FWD-32LX1 FWD-42LX1 FWD-42PV1 FWD-40LX1 FWD-32LX1R FWD-50PX2
2,000,931 and higher	2.03	FWD-32LX1 FWD-42LX1 FWD-42PV1 FWD-40LX1 FWD-32LX1R FWD-50PX2 FWD-42PX2

DPM006-023

UPGRADE PROCEDURE

System Requirements

- PC with LAN connection
 - Compatible monitor (See Table 1.)
 - Firmware update program (included with firmware)
-

NOTE:

- When updating from V1.00, both the Streaming and Network updates are required. Perform the Streaming update first.
 - When updating from V2.00, only the Network update is required.
-

Preparation

1. Connect BKM-FW50 to option slot 1 of the monitor. (See Figure 1.)



Figure 1

2. Make note of the IP address. (See Figure 2.)

NOTE: Refer to the *BKM-FW50 Operating Instructions* for details on how to set or confirm the IP address.

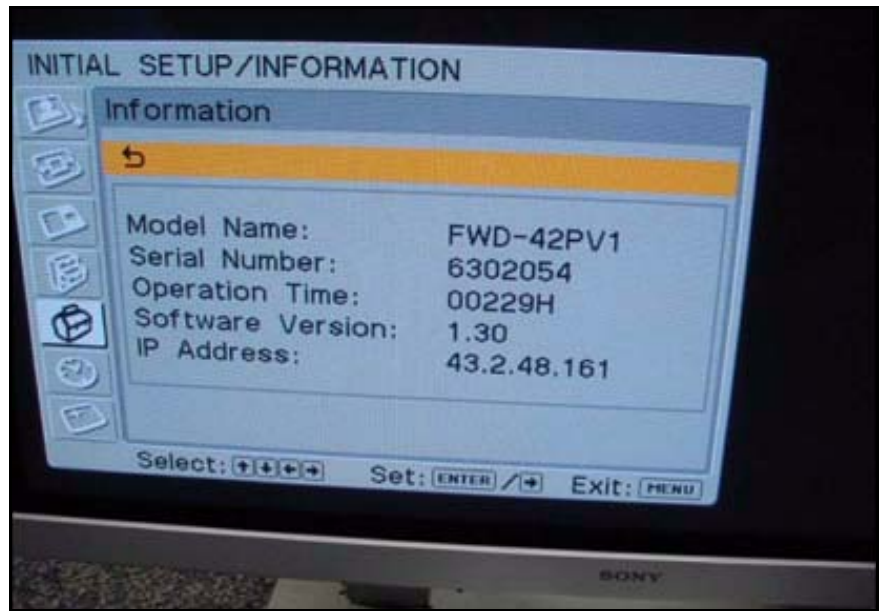


Figure 2

3. In the Address bar of Internet Explorer, type the applicable IP address, and press ENTER.

`http://xx.x.xx.xxx`

If successful, the screen in Figure 3 appears.



Figure 3

4. Enter the following user name and password using lowercase letters, and click OK. (See Figure 4.)

User name: service

Password: fwd_series

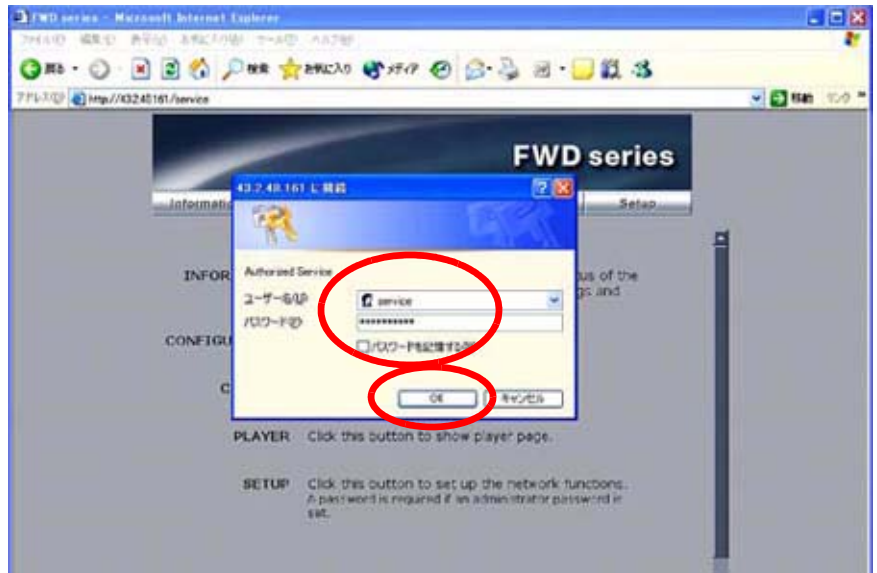


Figure 4

5. Click Update. (See Figure 5.)



Figure 5

Streaming Update

NOTE: When updating from V2.00, only the Network update is required. Skip to “Network Update” on page 11 of this bulletin.

1. In the Update Module field, select Streaming Controller, then click Apply. (See Figure 6.)

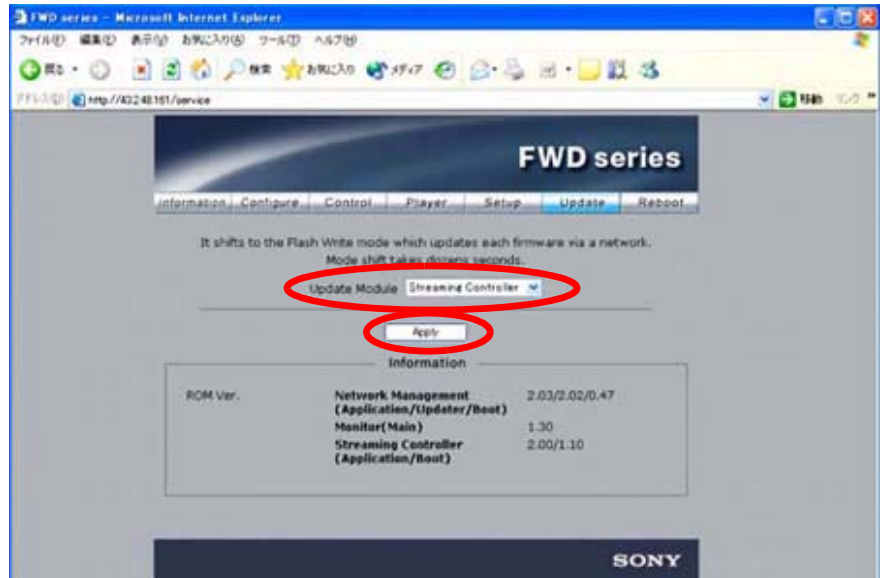


Figure 6

The application enters Flash Write Mode. (See Figure 7.)



Figure 7

2. Double-click the “Firmware updater.exe” file.

3. Enter the IP address, and click Search. (See Figure 8.)

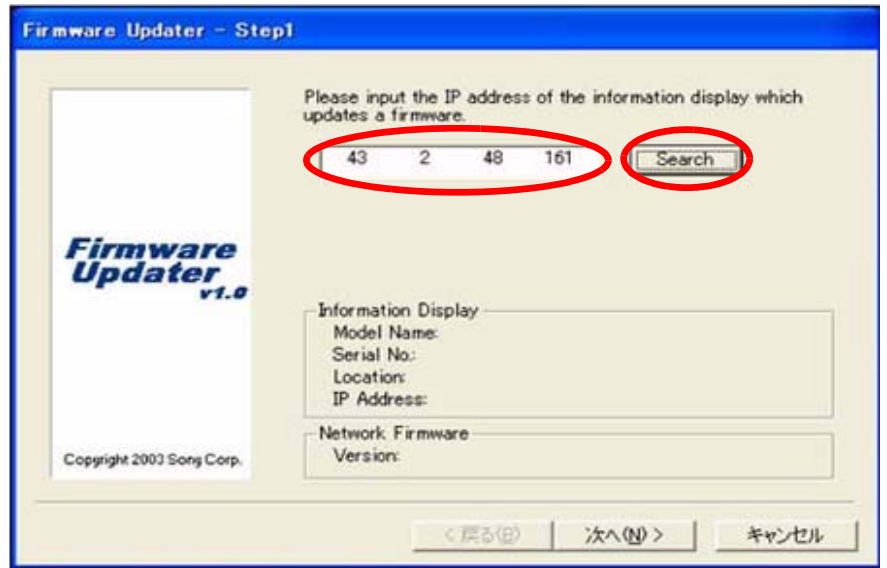


Figure 8

The Information Display Search window appears. (See Figure 9.)

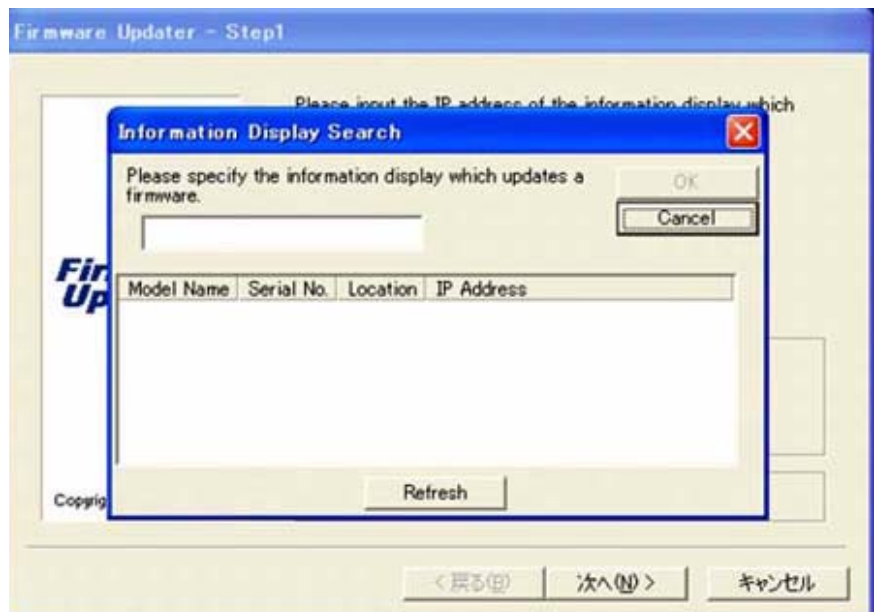


Figure 9

4. After a few minutes, the Model Name, Serial No., and IP Address are entered automatically.
Click OK. (See Figure 10.)

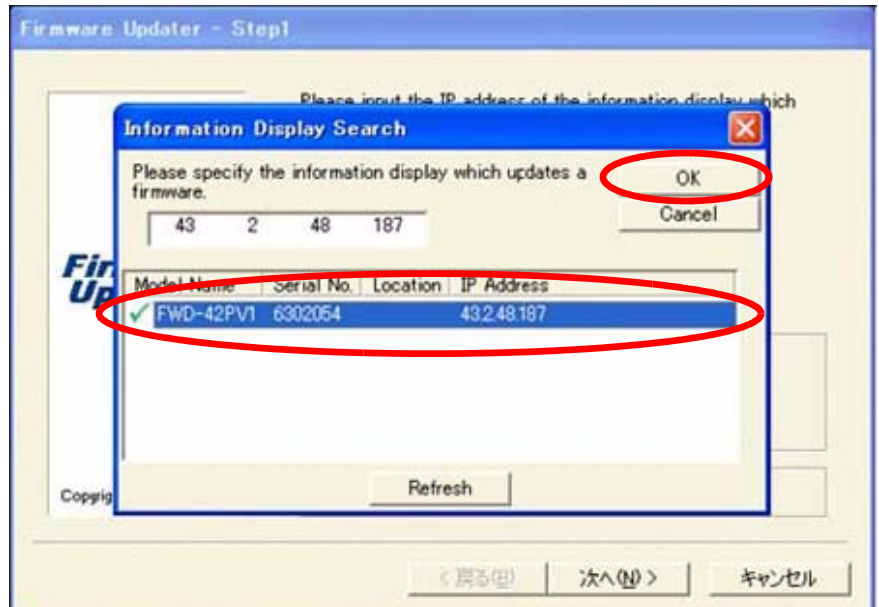


Figure 10

5. When the Information Display data are filled in, click Next.
(See Figure 11.)

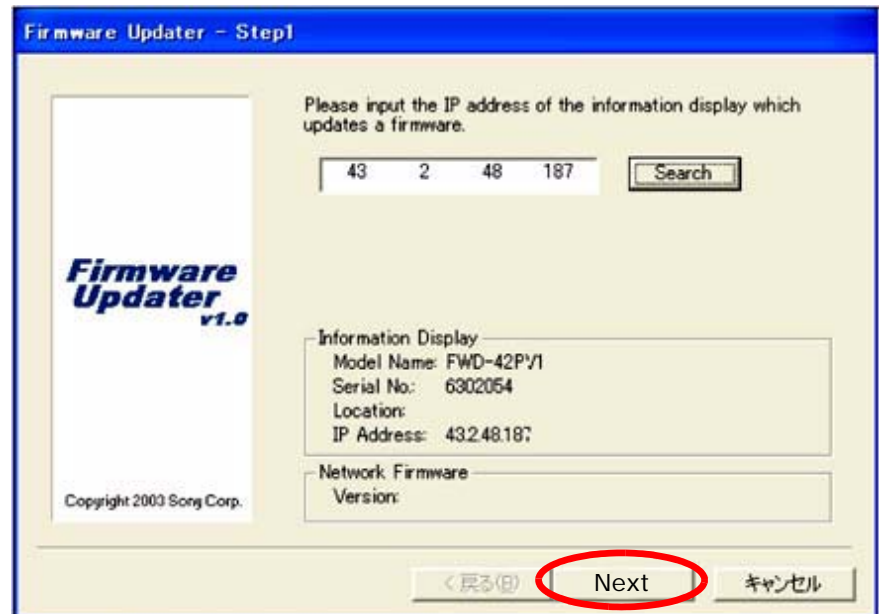


Figure 11

6. In the Firmware field, select NETWORK, and click Browse.
(See Figure 12.)

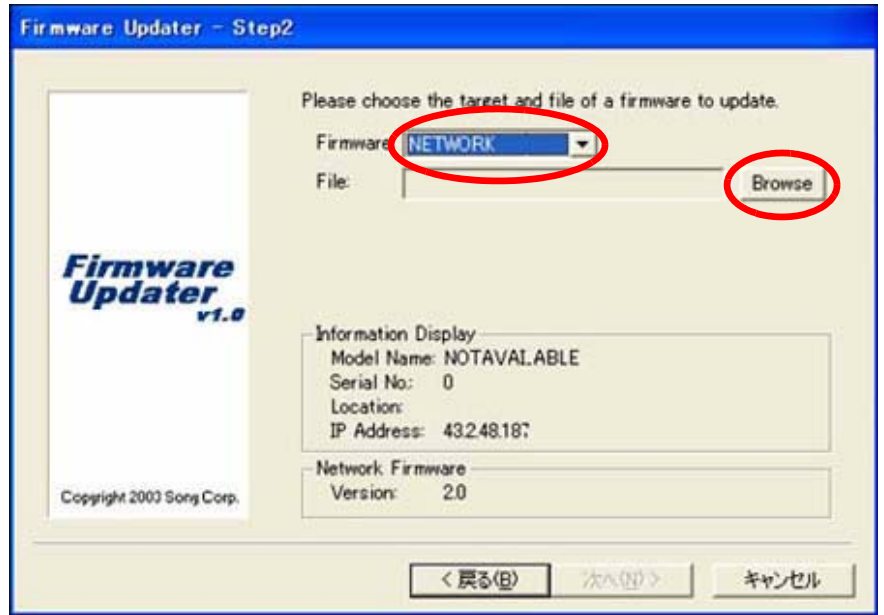


Figure 12

7. Select Streaming and "vxWorks_ver2.00.rom," and click Open. (See Figure 13.)

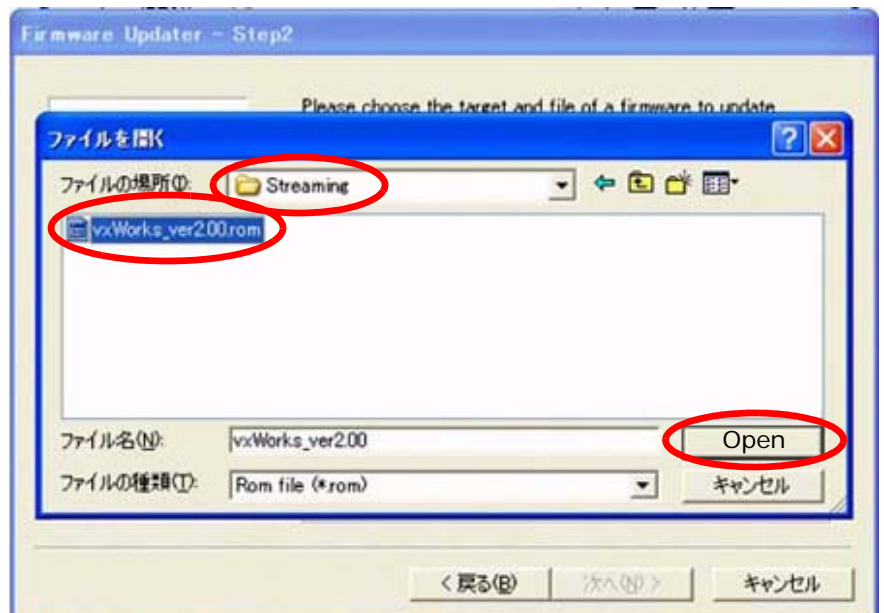


Figure 13

8. The required firmware is added to the File field. Click Next.
(See Figure 14.)



Figure 14

9. Click Update. (See Figure 15.)

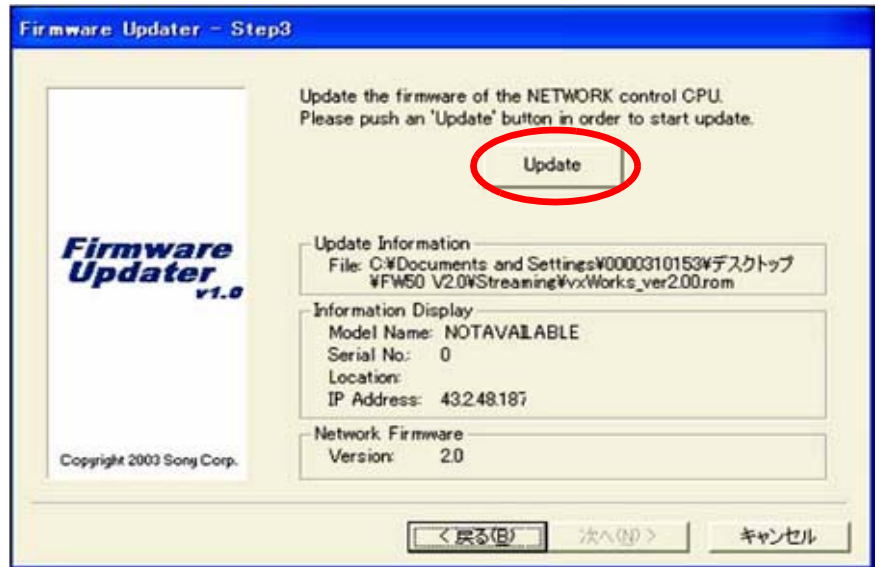


Figure 15

10. The following screen appears during the update. (See Figure 16.)

NOTE: Do not click anywhere during the update.

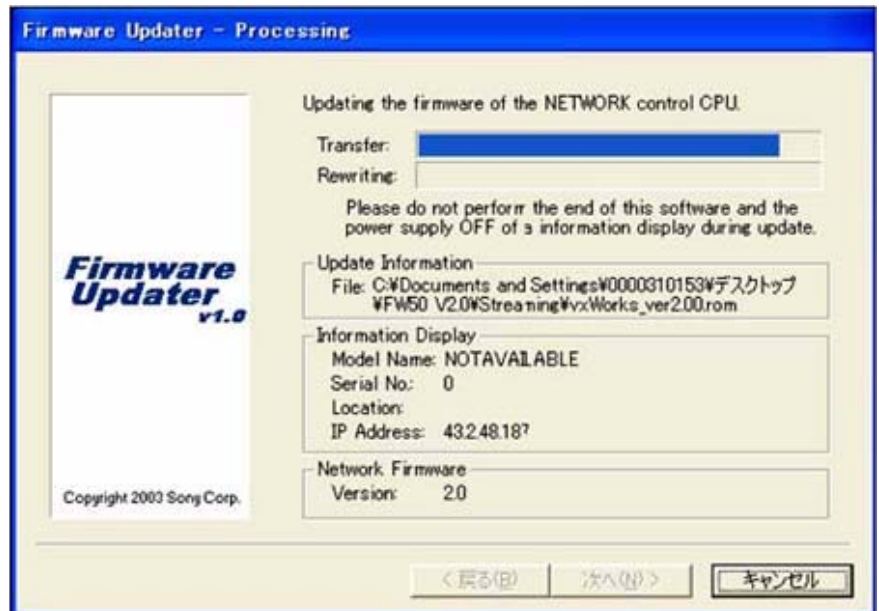


Figure 16

11. When the Restart button appears on the screen, click Restart, then click Finish. (See Figure 17.)

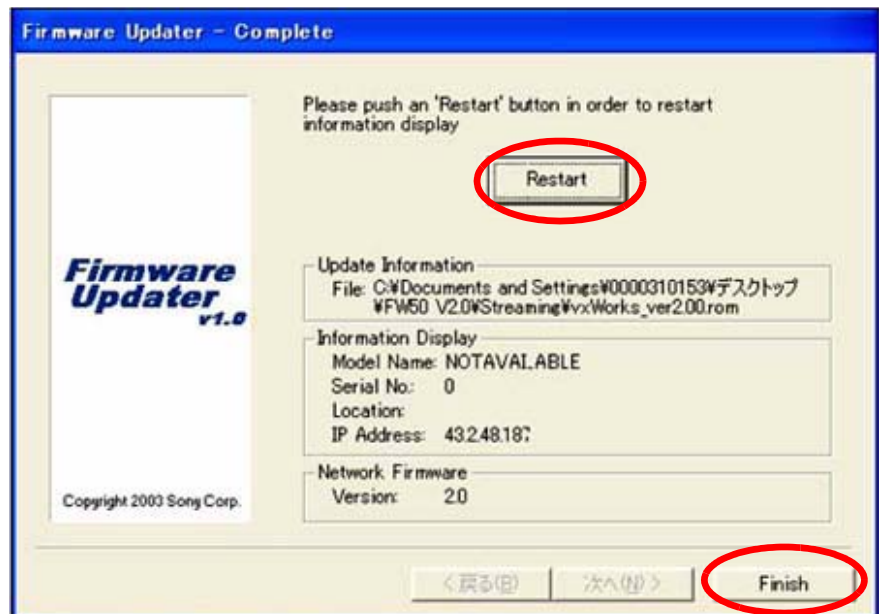


Figure 17

12. Close the Internet Explorer Browser.

Network Update

1. Perform all the steps under "Preparation" starting on page 2 of this bulletin.
2. In the Update Module field, select Network Management, then click Apply. (See Figure 18.)

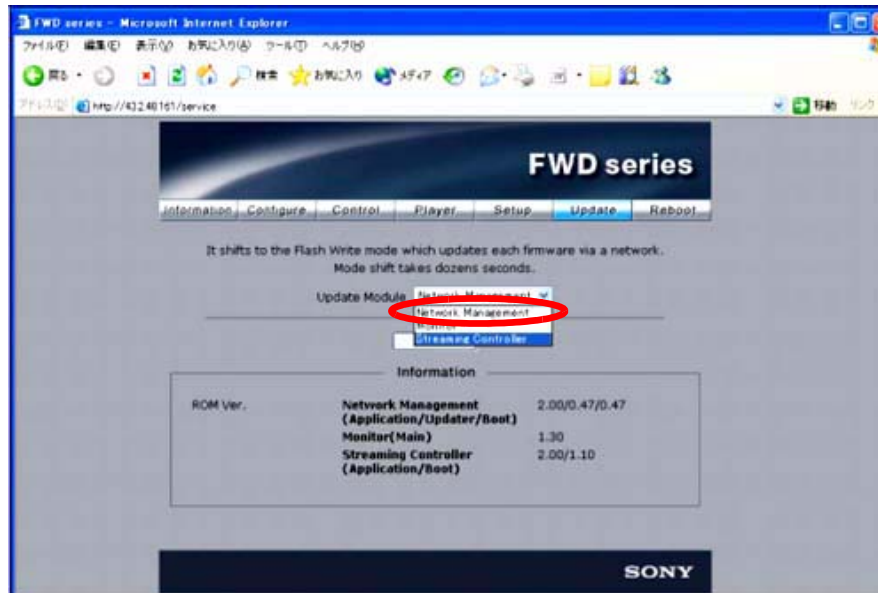


Figure 18

3. Under "Streaming Update" starting on page 5, perform steps 2 through 6.
4. Select "image_debug_fw50_v203.rom," and click Open. (See Figure 19.)

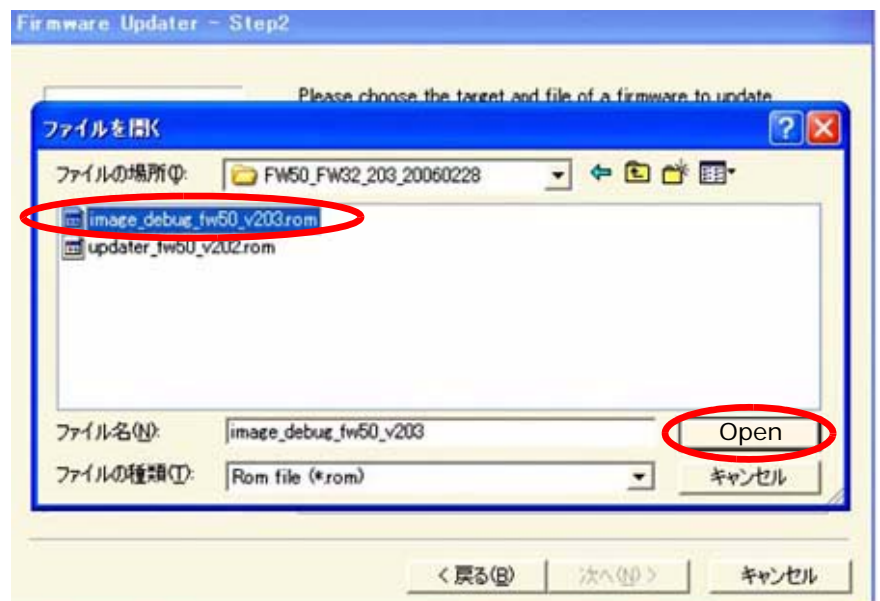


Figure 19

5. Under "Streaming Update" on page 5, perform steps 8 through 12.

6. Under "Network Update" on page 11, perform steps 1 through 3 again.
7. Select "updater_fw50_v202.rom," and click Open. (See Figure 20.)

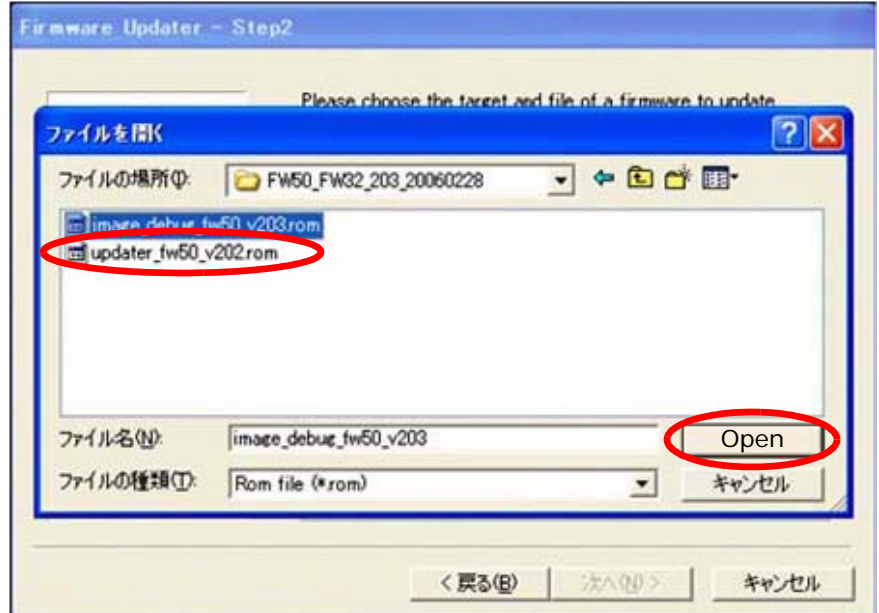


Figure 20

8. Under "Streaming Update" on page 5, perform steps 8 through 12 again.

CONFIRMATION

Confirm that the ROM versions are as follows. (See Figure 21.)

Network Management 2.03/x.xx/x.xx

Streaming Controller 2.00/x.xx

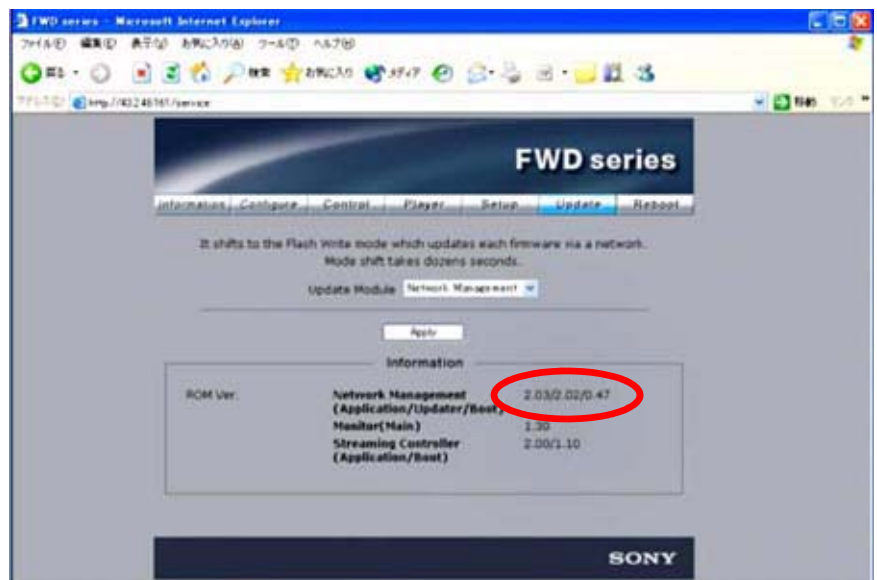


Figure 21